

AUTOMATION & CONTROL

### Series 38724 Pitch Single Row Tri-Barrier Terminal Strip

The tri-barrier construction of these parts provides superior circuit isolation to prevent shorting and allows additional components to be placed closer to the barrier strip where space is limited. The rear barrier also prevents over-insertion of the wire. **Wire Range:** 24-12 AWG. **Insulator Material:** Thermoplastic. **Terminal Material:** Brass, tin plate. **Screw:** #6-32 phil-slot combo head, Steel, zinc with clear chromate finish. **Flammability Rating:** UL 94 V-0. **W x H:** 0.62" x 0.66".



Stock No.	Mfr.'s Type	Former BEAU No.	No. of Circuits	Pitch (In.)	Current (A)	Voltage (V)	EACH		
							1-49	50-99	100-499
70191152	38724-4002	72R502	2	0.375	15	300	.62	.71	.69
70191153	38724-4003	72R503	3	0.375	15	300	2.14	1.94	1.78
70191154	38724-4004	72R504	4	0.375	15	300	2.77	2.64	2.49
70191155	38724-4006	72R506	6	0.375	15	300	1.71	2.50	2.30
70191156	38724-4008	72R508	8	0.375	15	300	1.71	2.50	2.30
70191157	38724-4010	72R5010	10	0.375	15	300	3.70	3.64	3.54
70191158	38724-4012	72R5012	12	0.375	15	300	2.32	3.00	2.72

ENCLOSURES

### Series 38740 Pitch Low Profile Single Row Barrier Terminal Strip

The 0.438" pitch barrier strip is robust and durable. Terminals are ultrasonically welded into the housing to prevent terminal twisting and associated solder joint failure. The low profile design is ideal for tight spaces. **Wire Range:** 24-10 AWG. **Insulator Material:** Thermoplastic. **Terminal Material:** Brass, tin plate. **Screw:** #6-32 phil-slot combo head, Steel, zinc with clear chromate finish. **Flammability Rating:** UL 94 V-0. **W x H:** 0.63" x 0.57".



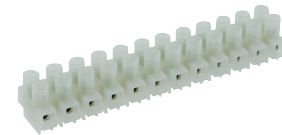
Stock No.	Mfr.'s Type	Former BEAU No.	No. of Circuits	Pitch (In.)	Current (A)	Voltage (V)	EACH		
							1-49	50-99	100-499
70191159	38740-6102	74502	2	0.438	15	300	1.89	1.72	1.58
70191160	38740-6103	74503	3	0.438	15	300	2.23	2.03	1.86
70191161	38740-6104	74504	4	0.438	15	300	1.96	1.78	1.63
70191162	38740-6106	74506	6	0.438	15	300	2.78	2.52	2.31
70191163	38740-6108	74508	8	0.438	15	300	2.30	3.38	3.10
70191164	38740-6110	74510	10	0.438	15	300	2.56	2.85	2.63

POWER

TERMINAL BLOCKS & STRIPS

### Series 39100 Two-Screw Terminal Strips

All two-screw terminal strips from Molex come standard with wire protectors to prevent stranded wire damage during connection. The screws and terminals are well recessed within the housing for added finger safety. **Voltage:** 300 V or 600 V. **Insulator Material:** Thermoplastic. **Terminal Material:** Brass, nickel-plated. **Flammability Rating:** UL 94 V-2.



Stock No.	Mfr.'s Type	No. of Circuits	Pitch (In.)	Current (A)	Voltage (V)	EACH		
						1-49	50-99	100-499
70255262	39100-0902	2	0.315	20	300	.41	—	—
70091268	39100-0802	2	0.315	20	600	.72	.63	.56
70247943	39100-0803	3	0.315	20	600	.85	—	—
70091269	39100-0805	5	0.315	20	600	1.37	1.01	.99
70191204	39100-0912	12	0.315	20	300	3.66	3.20	2.85
70191200	39100-0812	12	0.315	20	600	3.79	3.31	2.94
70091270	39100-1002	2	0.394	30	600	.87	.77	.68
70091271	39100-1103	3	0.394	30	300	1.32	1.16	1.03
70191205	39100-1112	12	0.394	30	300	3.13	2.85	2.61
70191201	39100-1012	12	0.394	30	600	4.63	4.04	3.60
70091272	39100-1202	2	0.472	40	600	.96	.84	.75
70191465	39100-1206	6	0.472	40	600	1.98	1.80	1.65
70191206	39100-1312	12	0.472	40	300	3.68	3.34	3.06
70191202	39100-1212	12	0.472	40	600	3.14	2.86	2.62
70090814	39100-1503	3	0.591	65	600	2.84	2.17	1.92
70191203	39100-1512	12	0.591	65	600	11.56	10.12	9.00

TEST & MEASUREMENT

PASSIVE & ACTIVE

### Cover Kits for Single Row Barrier Strips



Cover kits from Molex provide an easy and cost effective way to provide added finger safety for barrier strips with exposed screw terminals. Cover kits come with a cover and 2 latches and are quickly and easily assembled onto the barrier strip. **Insulator Material:** Vulcanized fiber, black (0.032" thick). **Latch Clips Material:** Acetyl, natural (0.040" thick). **Width:** 0.63" for 38720, 38724; 0.69" for 38740.

Stock No.	Mfr.'s Type	Former BEAU No.	No. of Circuits	For Series	EACH		
					1-49	50-99	100-499
70191165	38713-6402	CA0102	2	38720, 38724	.85	.77	.71
70191166	38713-6403	CA0103	3	38720, 38724	.64	.40	.33
70191167	38713-6404	CA0104	4	38720, 38724	.52	.46	.43
70191168	38713-6406	CA0106	6	38720, 38724	.53	.47	.43
70191169	38713-6408	CA0108	8	38720, 38724	.64	.58	.54
70191170	38713-6410	CA0110	10	38720, 38724	.70	.64	.59
70191171	38713-6412	CA0112	12	38720, 38724	.69	.63	.57
70191172	38733-6402	CA0202	2	38740	.67	.61	.56
70191173	38733-6403	CA0203	3	38740	.44	.68	.64
70191174	38733-6404	CA0204	4	38740	1.23	1.12	1.03
70191175	38733-6406	CA0206	6	38740	.91	.83	.76
70191176	38733-6408	CA0208	8	38740	1.07	.97	.89
70191177	38733-6410	CA0210	10	38740	1.36	1.23	1.13

INDEX

### Cover Kits for Double Row Barrier Strips



Cover kits from Molex provide an easy and cost effective way to provide added finger safety for barrier strips with exposed screw terminals. Cover kits come with a cover and 2 latches and are quickly and easily assembled onto the barrier strip. **Insulator Material:** Vulcanized fiber, black (0.032" thick). **Latch Clips Material:** Acetyl, natural (0.040" thick). **Width:** 0.88" for 38760, 38770; 1.13" for 38780.

Stock No.	Mfr.'s Type	Former BEAU No.	No. of Circuits	For Series	EACH		
					1-49	50-99	100-499
70191178	38773-6402	CA0302	2	38760, 38770	.54	.48	.44
70191179	38773-6403	CA0303	3	38760, 38770	.52	.81	.74
70191180	38773-6404	CA0304	4	38760, 38770	.87	.79	.72
70191181	38773-6405	CA0305	5	38760, 38770	.89	.81	.74
70191182	38773-6406	CA0306	6	38760, 38770	.97	.88	.81
70191183	38773-6407	CA0307	7	38760, 38770	.91	—	—
70191184	38773-6408	CA0308	8	38760, 38770	.87	.69	.55
70191185	38773-6409	CA0309	9	38760, 38770	.62	.56	.52
70191186	38773-6410	CA0310	10	38760, 38770	.73	.65	.59
70191187	38773-6411	CA0311	11	38760, 38770	.69	.62	.57
70191188	38773-6412	CA0312	12	38760, 38770	.72	.66	.60
70191189	38783-6402	CA0402	2	38780	.58	.53	.48
70191190	38783-6403	CA0403	3	38780	.58	.53	.48
70191191	38783-6404	CA0404	4	38780	.55	.49	.45
70191192	38783-6405	CA0405	5	38780	.57	.52	.47
70191193	38783-6406	CA0406	6	38780	.62	.56	.52
70191194	38783-6407	CA0407	7	38780	.67	.61	.56
70191195	38783-6408	CA0408	8	38780	.71	.65	.59
70191196	38783-6409	CA0409	9	38780	.45	.67	.61
70191197	38783-6410	CA0410	10	38780	.80	.73	.67
70191198	38783-6411	CA0411	11	38780	.93	.84	.78
70191199	38783-6412	CA0412	12	38780	.85	.77	.71