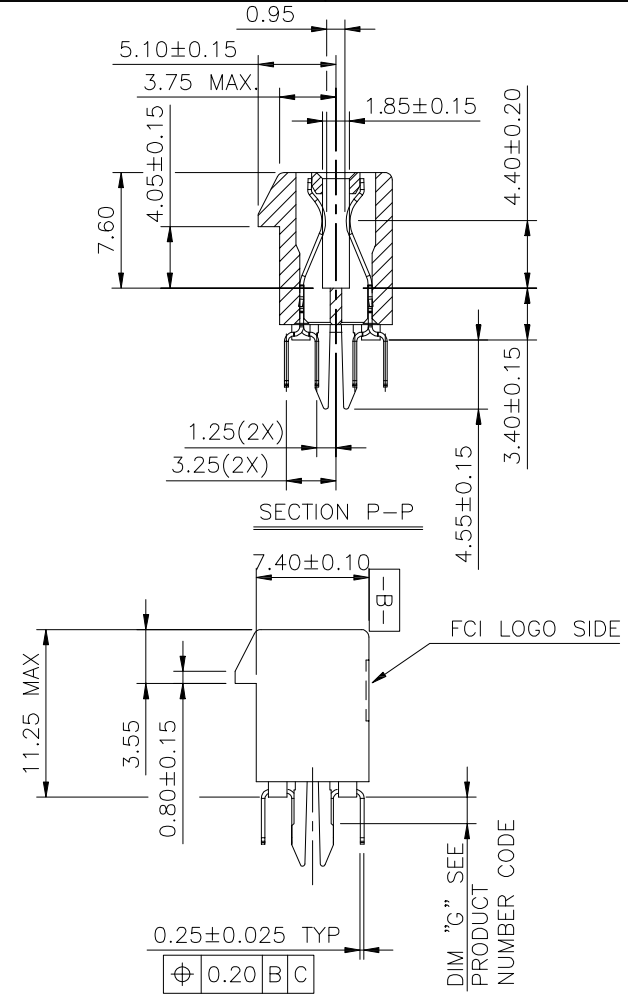
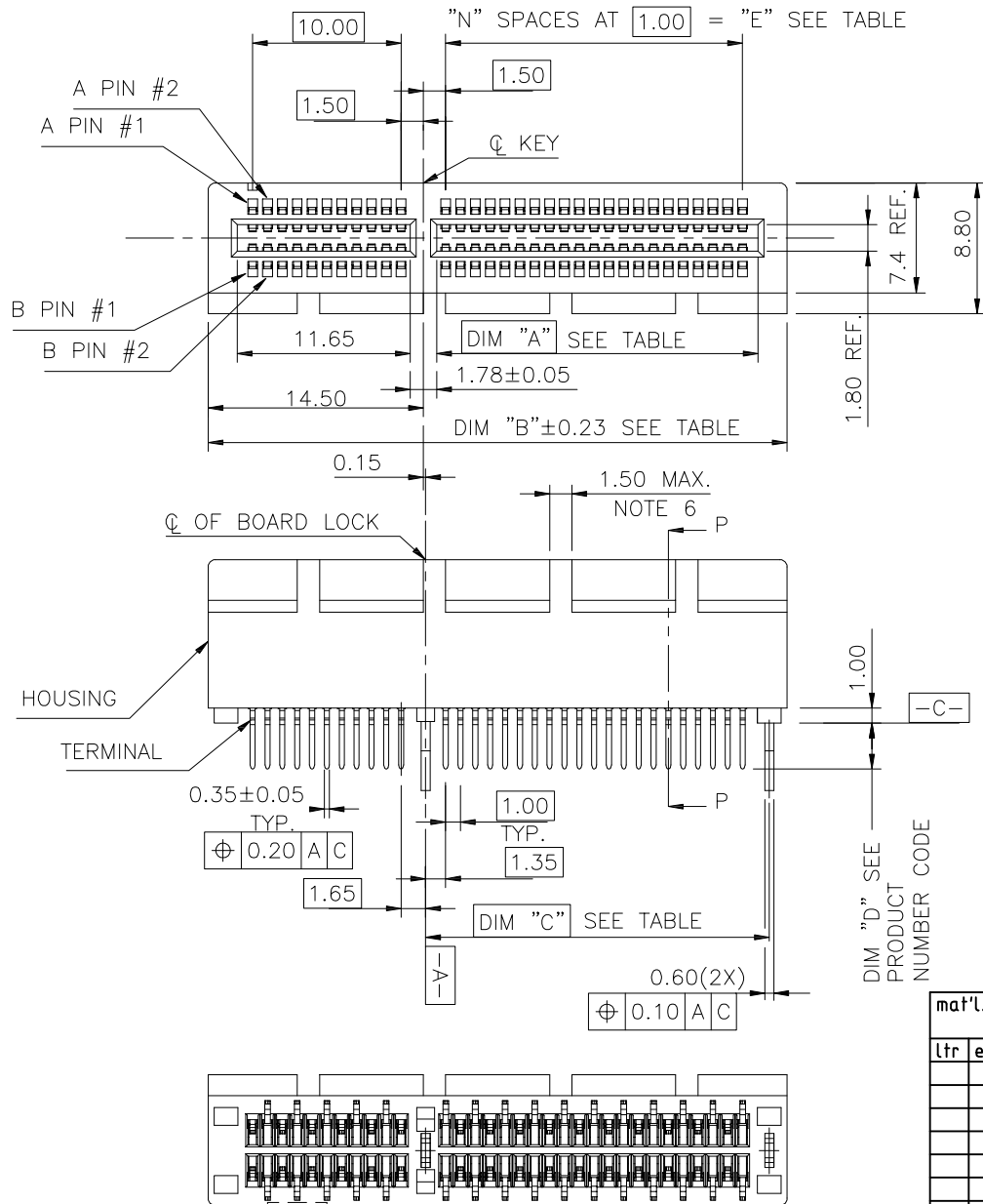


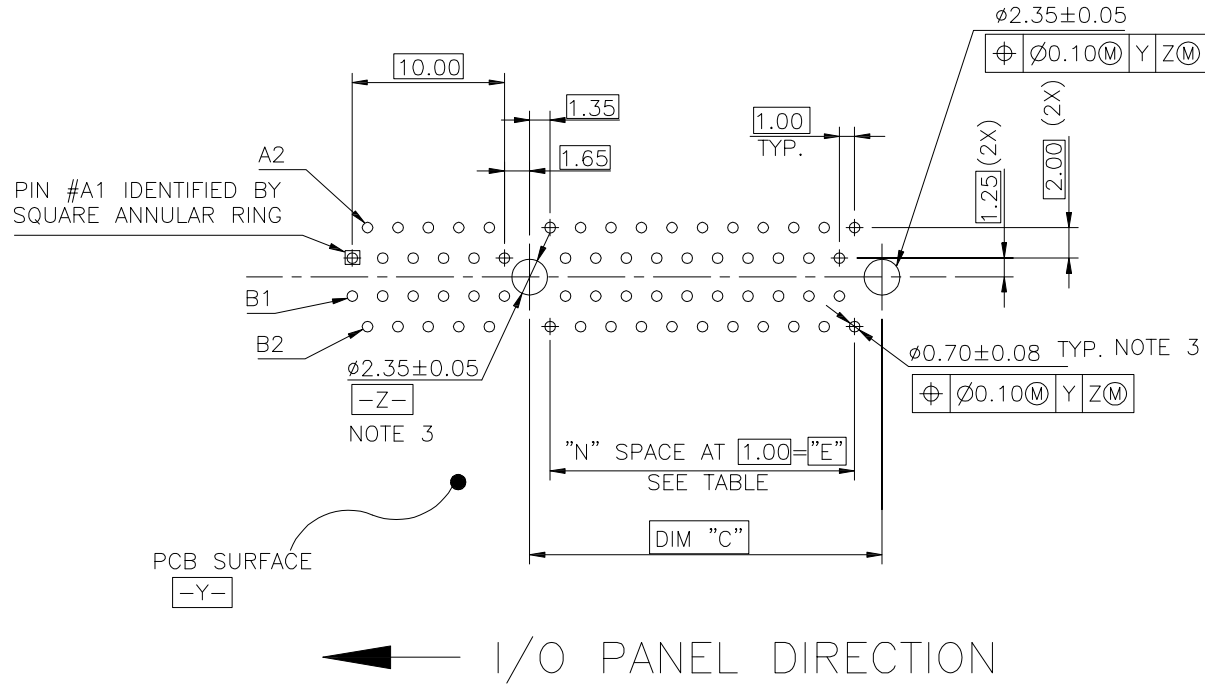
PLASTIC PEG TYPE

mat'l. code		surface		tolerance		projection		product family	
-		-		ASME_Y14.5		MM		PCI_EXPRESS	
tolerances unless otherwise specified									
ltr	ecn no	dr	date	angles	LineG	MM		title	
M	05-0124	M	06/07/05					PCI_EXPRESS_CARD_EDGE_GEN3	
N	05-0153	M	07/12/05					TH_ASS'Y	
P	05-0208	M	09/15/05	±2'		scale N/A		dwg no	
R	06-0206	R	12/01/06	dr	WINSTON_ZHU	2022-05-26		sheet 1 of 6	
S	ELX-DG-2161-1	S	05/27/15	engr	ZHENHUA_LIU	2022-05-26		size	
T	ELX-DG-38297	ZH	20/09/17	chr	MARS_LONG	2022-05-26		A4	
				appd	HEAVEN_CEN	2022-05-26		type	
sheet index		revision sheet		U				CUSTOMER Drawing	

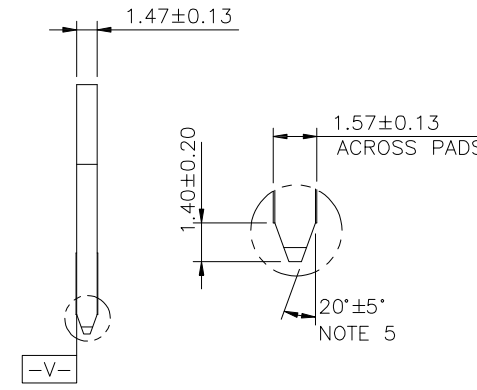
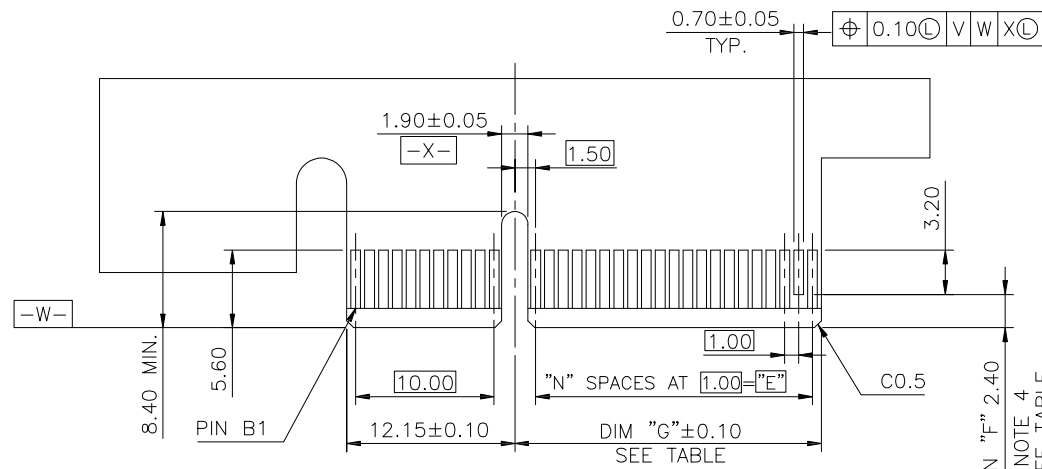


METAL BOARD LOCKS TYPE

mat'l. code		surface		tolerance		projection		product family	
-		-		ASME_Y14.5		MM		PCI_EXPRESS	
ltr		ecn no		date		tolerances unless otherwise specified		title	
						angles		PCI_EXPRESS_CARD_EDGE_GEN3	
						±2'		TH_ASS'Y	
						LineAr		dwg no	
						scale N/A		sheet 2 of 6	
						dr WINSTON_ZHU 2022-05-26		size	
						enr ZHNEHUA_LIU 2022-05-26		A4	
						chr MARS_LONG 2022-05-26		10018784	
						appd HEAVEN_CEN 2022-05-26		type	
						Amphenol FCI		CUSTOMER Drawing	
sheet index		revision sheet		U					

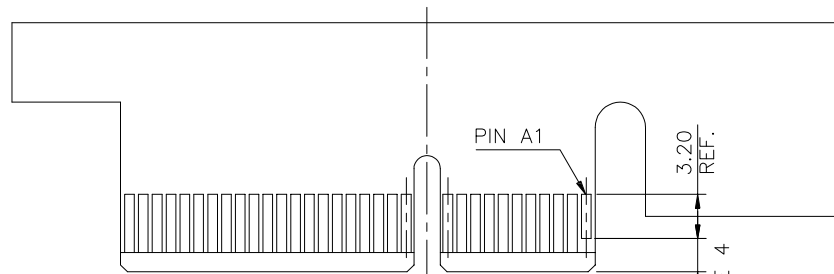


mat'l. code		-		surface		- ✓		tolerance		ASME_Y14.5		projection		product family		PCI_EXPRESS	
ltr	ecn no	dr	date	tolerances unless otherwise specified								title		PCI_EXPRESS_CARD_EDGE_GEN3			
				angles	linear	.0±.0.30		MM		scale N/A		TH_ASS'Y		5			
				±2'	linear	.00±.0.20						dwg no		sheet 3 of 6 size			
				dr	WINSTON_ZHU	2022-05-26		Amphenol FCI		10018784		A4		B			
				engr	ZHENHUA_LIU	2022-05-26											
				chr	MARS_LONG	2022-05-26											
				appd	HEAVEN_CEN	2022-05-26											
sheet index	revision sheet	U															



SCALE 2:1

← I/O PANEL DIRECTION  
PRIMARY (COMPONENT) SIDE



I/O PANEL DIRECTION →  
SECONDARY (SOLDER) SIDE

ADD-IN CARD EDGE-FINGER DIMENSIONS

#	POS	REF.	N	DIM "G"	"F"
36	6		8.15	B17	
64	20		22.15	B31	
98	37		39.15	B48	
164	70		72.15	B81	

PIN "F" SEE TABLE 2.40±0.10  
NOTE 4

mat'l. code		surface		tolerance		projection		product family	
-		-		ASME_Y14.5		⊕		PCI_EXPRESS	
ltr		ecn no		dr		date		title	
								PCI_EXPRESS_CARD_EDGE_GEN3	
				angles		MM		TH_ASS'Y	
				±2'		scale N/A		dwg no	
				dr		2022-05-26		sheet 4 of 6	
				enfr		2022-05-26		size	
				chr		2022-05-26		A4	
				appd		2022-05-26		10018784	
								type	
								CUSTOMER Drawing	
sheet index		revision sheet		u					

NOTES:

1.MATERIAL:

HOUSING: NYLON, GLASS FILLED UL94V-0 RATE, SUITABLE FOR WAVE SOLDERING.

TERMINAL: COPPER ALLOY

PLATING: 50u" NICKEL UNDERPLATE ALL OVER  
CONTACT AREA PLATING - SEE PRODUCT NUMBER CODE

SOLDER TAIL: TIN/LEAD (90/10) - SEE PRODUCT NUMBER CODE  
100u" MIN. OVER 50u" NICKEL

METAL BOARD LOCKS: COPPER ALLOY  
FINISH: 100u" TIN/LEAD (90/10) OVER 50u" NICKEL  
UNDERPLATE SEE PRODUCT NUMBER CODE

2.PRODUCT SPECIFICATION: GS-12-233

③THE HORIZONTAL AXIS FOR THE HOLE PATTERN IS ESTABLISHED BY A LINE THROUGH THE CENTER OF THE TWO Ø2.35 HOLES. THE VERTICAL AXIS IS 90° TO THE HORIZONTAL AXIS, THROUGH THE CENTER OF DATUM Z.

④NO TIE BAR PERMITTED FROM CARD EDGE TO LEADING EDGE OF PAD FOR PINS A1 AND PIN NUMBERS "F".

⑤CHAMFER EDGES MUST BE FREE OF CUTTING BURRS.

⑥FREQUENCY & LOCATION AT SUPPLIER DISCRETION. RIDGE MAY BE CONTINUOUS WITH NO BREAKS.

7.RoHS COMPATIBLE PRODUCT SPECIFICATIONS

a - PLATING:

- "LF" MEANS THE PRODUCT IS LEAD-FREE, 2um MINIMUM MATTE TIN OVER 1.27um MINIMUM NICKEL UNDERPLATE.

b - MANUFACTURING PROCESS COMPATIBILITY

- THE HOUSING WILL WITHSTAND EXPOSURE TO 260°C±5°C SOLDER BATH TEMPERATURE FOR 5 SECONDS IN A WAVE SOLDER APPLICATION WITH A 1.6mm MIN THICK CIRCUIT BOARD.  
- THE HOUSING WILL WITHSTAND EXPOSURE TO 240°C±5°C SOLDER BATH TEMPERATURE FOR 5 SECONDS IN A WAVE SOLDER APPLICATION WITH A 1.6mm MIN THICK CIRCUIT BOARD.(For 10018784-X 0 X X X X(X X) options)

CONNECTOR	# POS	REF.	N	DIM "A"	DIM "B"	DIM "C"	"E"
1 PORT	36		6	7.65	25.00	9.15	6.00
4 PORT	64		20	21.65	39.00	23.15	20.00
8 PORT	98		37	38.65	56.00	40.15	37.00
16 PORT	164		70	71.65	89.00	73.15	70.00

PRODUCT NUMBER CODE  
10018784-x x x x x x □ □

HOUSING COLOR OPTIONS

0-WHITE  
1-BLACK

PEGS OPTIONS

0-PLASTIC PEGS  
1-METAL BOARD LOCKS

TERMINAL PLATING OPTIONS

- 0-50u" Ni UNDERPLATE  
30u" Au CONTACT AREA  
100u" TIN TAIL AREA ----- COMPATIBLE RoHS
- 1-50u" Ni UNDERPLATE  
15u" Au CONTACT AREA  
100u" TIN TAIL AREA ----- COMPATIBLE RoHS
- 2-50u" Ni UNDERPLATE  
GOLD FLASH CONTACT AREA  
100u" TIN TAIL AREA ----- COMPATIBLE RoHS
- 3-50u" Ni UNDERPLATE  
30u" Au CONTACT AREA  
100u" TIN/LEAD TAIL AREA ----- INCOMPLIANT RoHS
- 4-50u" Ni UNDERPLATE  
15u" Au CONTACT AREA  
100u" TIN/LEAD TAIL AREA ----- INCOMPLIANT RoHS
- 5-50u" Ni UNDERPLATE  
GOLD FLASH CONTACT AREA  
100u" TIN/LEAD TAIL AREA ----- INCOMPLIANT RoHS

LEAD FREE OPTION

LEAVE BLANK FOR TERMINAL PLATING 3,4,5  
"LF" FOR TERMINAL PLATING OPTION 0,1,2

POS OPTIONS

0-36  
1-64  
2-98  
3-164

TAIL LENGTH OPTIONS

	DIM "D"	PCB THICKNESS	BOARD LOCKS DIM"G"
0	2.30 $\pm_{-0.13}^{+0.25}$	1.56±0.10	1.70±0.15
1	3.10 $\pm_{-0.13}^{+0.25}$	2.36±0.10	2.50±0.15

PACKAGING OPTIONS

- T-TRAY PACKAGING
- M-TRAY PACKAGING & MYLAR TAPE FOR PICK-N-PLACE. SEE FIGURE 1
- R-TAPE & REEL PACKAGING (FOR 36, 64, 98P)
- A-TAPE & REEL PACKAGING WITH MYLAR (FOR 36, 64, 98P)
- Y-HARD TRAY PACKAGING (338X235X21.4) (FOR 36P,98P 164P ONLY)



A

A

B

B

mat'l. code		surface		tolerance		projection		product family	
-		-		ASME_Y14.5				PCI_EXPRESS	
ltr		ecn no		dr		date		title	
								PCI_EXPRESS_CARD_EDGE_GEN3	
								TH_ASS'Y	
								sheet 5 of 6	
								size	
								A4	
								type	
								CUSTOMER Drawing	
sheet index		revision		u					

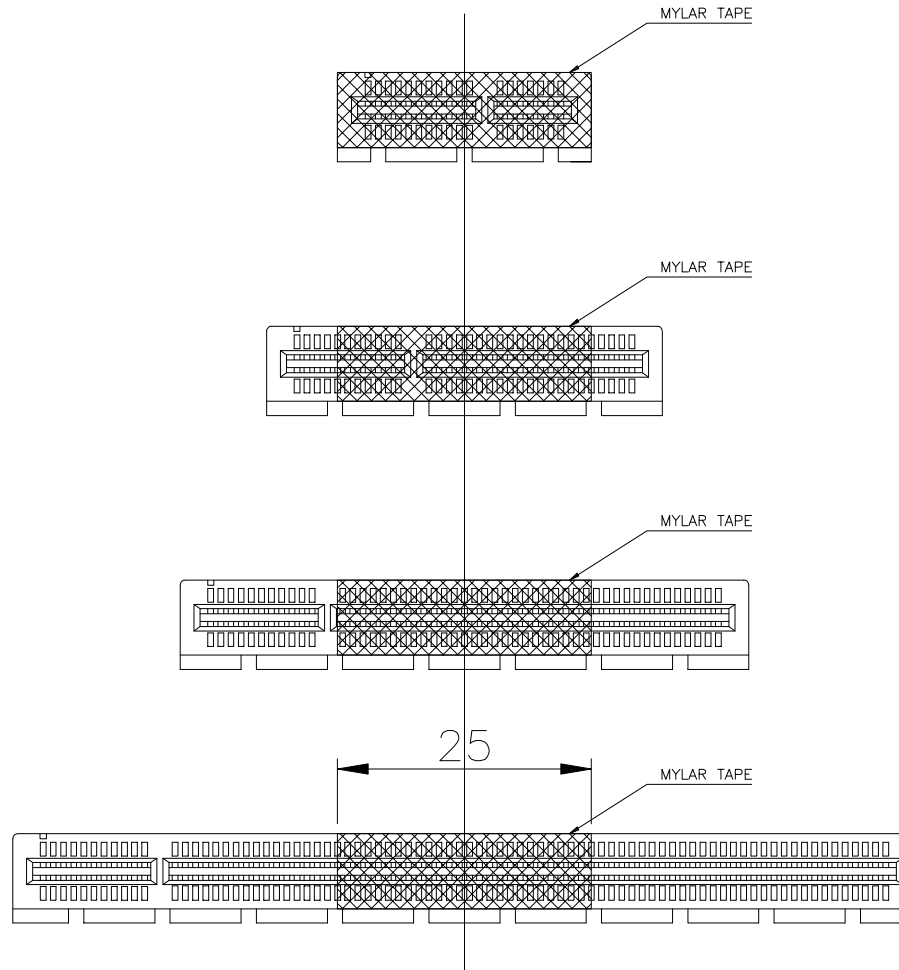


FIGURE 1

mat'l. code		-		surface	-	tolerance	ASME_Y14.5	projection	⊕	product family	PCI_EXPRESS
ltr	ecn no	dr	date	tolerances unless otherwise specified				MM	title	PCI_EXPRESS_CARD_EDGE_GEN3_TH_ASS'Y	
				angles	linear	.02±0.30		scale	N/A	dwg no	sheet 6 of 6 size
				±2'	linear	.00±0.20				10018784	A4
				dr	WINSTON_ZHU	2022-05-26					
				engr	ZHENHUA_LIU	2022-05-26					
				chr	MARS_LONG	2022-05-26					
				appd	HEAVEN_CEN	2022-05-26					
sheet index	revision sheet	U								type	CUSTOMER Drawing