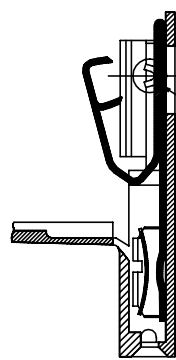
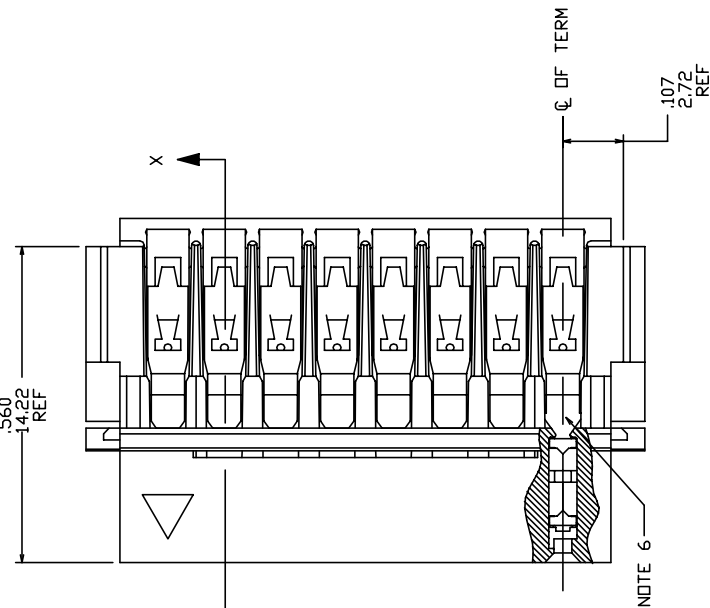
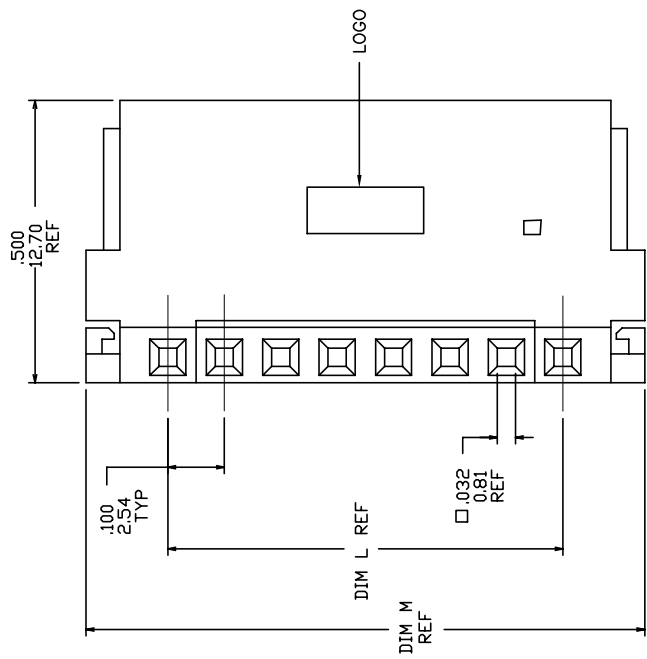


PRODUCT NUMBER  
SEE TABLE



SECTION X-X



DETAIL Z  
SCALE 6/1

mat'l. code		surface		tolerance		projection		product family	
AN BX-H-010493		ZK 06/03/12		ISO 1302		ISO 1101		CLINCHER	
AH V60509		HTB 3/5/96		ISO 1101		ISO 1101		CLINCHER™ RECEPTACLE ASSEMBLY	
AJ M05-0087		MHT 6/15/05		.001		.001		dwg no 65801	
AK M06-0233		AGS 6/12/06		.001		.001		sheet 1 of 7 size A3	
AL M07-0088		MHT 2/06/07		.001		.001		type Product Customer Drawing	
AM M09-0062		CMR 4/09/09		.001		.001			
sheet		revisi		AN		AN			
index		sheet		1		2			
		3		4		5			
		6		7					

PLATING AVAILABLE

PLATING CODE	TERMINAL	SPRING
1	100u"/2.54u MIN. THICK PURE TIN	10u"/.25u MIN. THICK PURE TIN
2	30u"/.76u MIN. GOLD DR GXT STRIPE IN BOX AREA	3u"/.08u MIN. GOLD OVER 50u"/1.27u MIN. NICKLE

PRODUCT NUMBER  
65801-XXXLF

LEAD FREE OPTION  
NOTE 9,10  
NO. OF POSITIONS  
AND PLATING  
BASE PART NUMBER

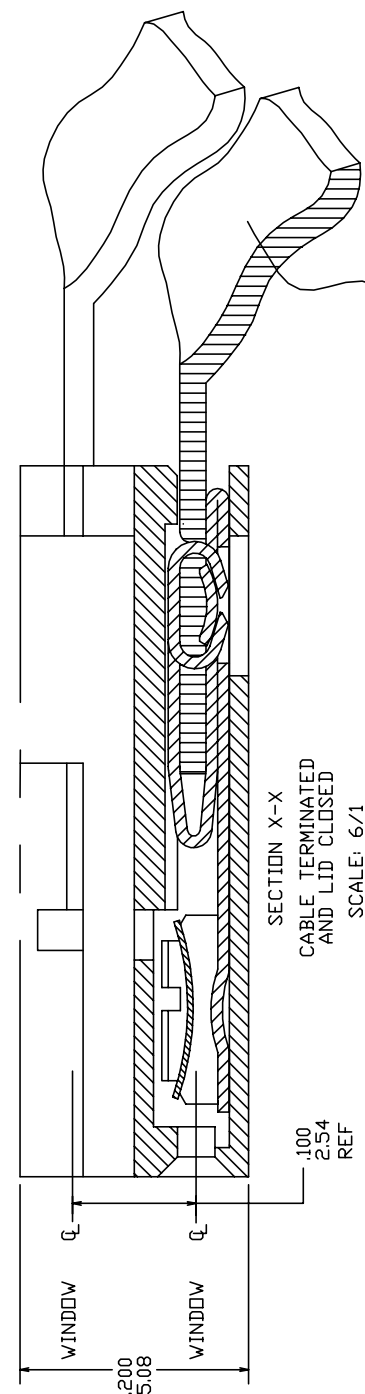


FIG A  
NOTE 7

NOTES:

- ① MOLDING MAT'L: THERMOPLASTIC, FLAME RETARDENT PER UL 94V-D. COLOR: BLUE.
- ② TERMINAL MAT'L: 1/2 HARD CuNi ALLOY, UNS-C72500. PLATING: SEE TABULATION AND PLATING TABLE.
- ③ SPRING MAT'L: 1/2 HARD BeCu ALLOY, UNS-C17200. PLATING: SEE TABULATION AND PLATING TABLE.
- ④ LATCH SWINGS CLOSED AFTER TERMINATION MAINTAINING A MAX OVER ALL HEIGHT OF .100/2.54
- ⑤ LABEL IN THIS AREA P/N AND DATE LOT CODE (WEEK AND YEAR) ON DASH No.-067 AND -167 ONLY.
- ⑥ KNURL MARK INDICATES FOR USE WITH INK TERMINATION. CONSULT WITH BERG ELECTRONICS TECHNICAL REPRESENTATIVE FOR SPECIFIC APPLICATIONS.
- ⑦ POSITION NUMBERS INITIATE FROM TRIANGULAR MARK ON HOUSING. SEE TABULATION FOR POSITION NO CLOSED AND TERMINAL NO ABSENT. FIG A SHOWS POSITION No 2 CLOSED.
- ⑧ AN EIGHT DIGIT PART NUMBER FOLLOWED BY A "J" INDICATES INVENTORY FOR JAPAN ONLY.
- ⑨ ADD "LF" SUFFIX AT THE END OF PART NUMBER FOR LEAD FREE OPTION.
- ⑩ THIS PRODUCT MEETS EUROPEAN UNION DIRECTIVES AND OTHER COUNTRY REGULATION AS DESCRIBED IN GS-22-008.
- 11 THE PRODUCT IS NOT INTENDED TO BE EXPOSED TO A MANUFACTURING SOLDER PROCESS
- ⑫ PLATING OPTIONS:  
MAY BE EITHER GOLD DR GXT PLATED AT MANUFACTURER'S OPTION.

mat'l. code	surface	tolerance	projection	product family
AN	ISO 1302	ISO 406	ISO 1101	CLINCHER
date	angles	lineal	INCH/MM	title
	0°±2'	.0040/0.1043	scale 3:1	CLINCHER™ RECEPTACLE ASSEMBLY
sheet index	dr	appr	dwg no	sheet 2 of 7 size
revision	chr	appr	65801	A3
sheet	chr	appr	Product Customer Drawing	
index	sheet	sheet		





PRODUCT NO. NOTE 9	NO. OF POSITIONS	DIM. L		DIM. M		DIM. C		DIM. C ENGLISH	DIM. C METRIC	DIM. C	TERMINATION NOTE 6	NOTES
		ENGLISH	METRIC	ENGLISH	METRIC	ENGLISH	METRIC					
65801-033	4	0.300	7.62	0.590	14.99	0.515	13.08				CONVENTIONAL	-
65801-034	5	0.400	10.16	0.690	17.53	0.615	15.62				CONVENTIONAL	-
65801-035	6	0.500	12.70	0.790	20.07	0.715	18.16				CONVENTIONAL	-
65801-036	7	0.600	15.24	0.890	22.61	0.815	20.70				CONVENTIONAL	-
65801-037	8	0.700	17.78	0.990	25.15	0.915	23.24				CONVENTIONAL	-
65801-038	9	0.800	20.32	1.090	27.69	1.015	25.78				CONVENTIONAL	-
65801-039	10	0.900	22.86	1.190	30.23	1.115	28.32				CONVENTIONAL	-
65801-040	11	1.000	25.40	1.290	32.77	1.215	30.86				CONVENTIONAL	-
65801-041	12	1.100	27.94	1.390	35.31	1.315	33.40				CONVENTIONAL	-
65801-042	13	1.200	30.48	1.490	37.85	1.415	35.94				CONVENTIONAL	-
65801-043	14	1.300	33.02	1.590	40.39	1.515	38.48				CONVENTIONAL	-
65801-044	15	1.400	35.56	1.690	42.93	1.615	41.02				CONVENTIONAL	-
65801-045	16	1.500	38.10	1.790	45.47	1.715	43.56				CONVENTIONAL	-
65801-046	17	1.600	40.64	1.890	48.01	1.815	46.10				CONVENTIONAL	-
65801-047	18	1.700	43.18	1.990	50.55	1.915	48.64				CONVENTIONAL	-
65801-048	19	1.800	45.72	2.090	53.09	2.015	51.18				CONVENTIONAL	-
65801-049	20	1.900	48.26	2.190	55.63	2.115	53.72				CONVENTIONAL	-
65801-050	21	2.000	50.80	2.290	58.17	2.215	56.26				CONVENTIONAL	-
65801-051	22	2.100	53.34	2.390	60.71	2.315	58.80				CONVENTIONAL	-
65801-052	23	2.200	55.88	2.490	63.25	2.415	61.34				CONVENTIONAL	-
65801-053	24	2.300	58.42	2.590	65.79	2.515	63.88				CONVENTIONAL	-
65801-054	25	2.400	60.96	2.690	68.33	2.615	66.42				CONVENTIONAL	-
65801-055	26	2.500	63.50	2.790	70.87	2.715	68.96				CONVENTIONAL	-
65801-056	27	2.600	66.04	2.890	73.41	2.815	71.50				CONVENTIONAL	-
65801-057	28	2.700	68.58	2.990	75.95	2.915	74.04				CONVENTIONAL	-
65801-058	29	2.800	71.12	3.090	78.49	3.015	76.58				CONVENTIONAL	-
65801-059	30	2.900	73.66	3.190	81.03	3.115	79.12				CONVENTIONAL	-
65801-060	31	3.000	76.20	3.290	83.57	3.215	81.66				CONVENTIONAL	-
65801-061	32	3.100	78.74	3.390	86.11	3.315	84.20				CONVENTIONAL	-
65801-062	3	0.200	5.08	0.490	12.45	0.415	10.54				CONVENTIONAL	-
65801-063	2	0.100	2.54	0.390	9.91	0.315	8.00				CONVENTIONAL	-
65801-064	34	3.300	83.82	3.590	91.19	3.515	89.28				CONVENTIONAL	-
65801-065	33	3.200	81.28	3.490	88.65	3.415	86.74				CONVENTIONAL	-
65801-066	34	3.300	83.82	3.590	91.19	3.515	89.28				CONVENTIONAL	-
65801-067	12	1.100	27.94	1.390	35.31	1.315	33.40				CONVENTIONAL	NOTE 5

mat'l. code		surface / tolerance ISO 1302 / ISO 406 ISO 1101		projection		product family	
trlec n	nbr	date	angles	linea	INCH/MM	CLINCHER	CLINCHER
AN			XXXL01/0X003	XXXL06/0X0013	scale 3:1	title	
			XXXL002/0X00005			CLINCHER™ RECEPTACLE ASSEMBLY	
			dr	T.BREWBAKER	5/17/94	dwg no	
			engr	T. HANNA	5/17/94	sheet 4 of 7 size	
			chr	J.MURPHY	5/17/94	65801	
			appd	T. HANNA	5/17/94	Product Customer Drawing	
sheet index	revision						





PRODUCT NO. NOTE 9	NO. OF POSITIONS		DIM. L		DIM. M		DIM. C		DIM. C		PLATING CODE	TERMINATION NOTE 6	NOTES
	ENGLISH	METRIC	ENGLISH	METRIC	ENGLISH	METRIC	ENGLISH	METRIC	ENGLISH	METRIC			
65801-133	4	0.300	7.62	0.400	0.590	14.99	0.515	13.08	2	INK	-		
65801-134	5	0.400	10.16	0.500	0.690	17.53	0.615	15.62	2	INK	-		
65801-135	6	0.500	12.70	0.600	0.790	20.07	0.715	18.16	2	INK	-		
65801-136	7	0.600	15.24	0.700	0.890	22.61	0.815	20.70	2	INK	-		
65801-137	8	0.700	17.78	0.800	0.990	25.15	0.915	23.24	2	INK	-		
65801-138	9	0.800	20.32	0.900	1.090	27.69	1.015	25.78	2	INK	-		
65801-139	10	0.900	22.86	1.000	1.190	30.23	1.115	28.32	2	INK	-		
65801-140	11	1.000	25.40	1.100	1.290	32.77	1.215	30.86	2	INK	-		
65801-141	12	1.100	27.94	1.200	1.390	35.31	1.315	33.40	2	INK	-		
65801-142	13	1.200	30.48	1.300	1.490	37.85	1.415	35.94	2	INK	-		
65801-143	14	1.300	33.02	1.400	1.590	40.39	1.515	38.48	2	INK	-		
65801-144	15	1.400	35.56	1.500	1.690	42.93	1.615	41.02	2	INK	-		
65801-145	16	1.500	38.10	1.600	1.790	45.47	1.715	43.56	2	INK	-		
65801-146	17	1.600	40.64	1.700	1.890	48.01	1.815	46.10	2	INK	-		
65801-147	18	1.700	43.18	1.800	1.990	50.55	1.915	48.64	2	INK	-		
65801-148	19	1.800	45.72	1.900	2.090	53.09	2.015	51.18	2	INK	-		
65801-149	20	1.900	48.26	2.000	2.190	55.63	2.115	53.72	2	INK	-		
65801-150	21	2.000	50.80	2.100	2.290	58.17	2.215	56.26	2	INK	-		
65801-151	22	2.100	53.34	2.200	2.390	60.71	2.315	58.80	2	INK	-		
65801-152	23	2.200	55.88	2.300	2.490	63.25	2.415	61.34	2	INK	-		
65801-153	24	2.300	58.42	2.400	2.590	65.79	2.515	63.88	2	INK	-		
65801-154	25	2.400	60.96	2.500	2.690	68.33	2.615	66.42	2	INK	-		
65801-155	26	2.500	63.50	2.600	2.790	70.87	2.715	68.96	2	INK	-		
65801-156	27	2.600	66.04	2.700	2.890	73.41	2.815	71.50	2	INK	-		
65801-157	28	2.700	68.58	2.800	2.990	75.95	2.915	74.04	2	INK	-		
65801-158	29	2.800	71.12	2.900	3.090	78.49	3.015	76.58	2	INK	-		
65801-159	30	2.900	73.66	3.000	3.190	81.03	3.115	79.12	2	INK	-		
65801-160	31	3.000	76.20	3.100	3.290	83.57	3.215	81.66	2	INK	-		
65801-161	32	3.100	78.74	3.200	3.390	86.11	3.315	84.20	2	INK	-		
65801-162	3	0.200	5.08	0.300	0.490	12.45	0.415	10.54	2	INK	-		
65801-163	2	0.100	2.54	0.200	0.390	9.91	0.315	8.00	2	INK	-		
65801-164					U N A \$ I G N E D								
65801-165					U N A \$ I G N E D								
65801-166	34	3.300	83.82	3.400	3.590	91.19	3.515	89.28	2	INK	-		
65801-167	12	1.100	27.94	1.200	1.390	35.31	1.315	33.40	2	INK	NOTE 5		

mat'l. code	surface	tolerance	projection	product family
AN	ISO 1302	ISO 406		CLINCHER
	date	tolerances unless otherwise specified	INCH/MM	title
		angles	scale 3:1	CLINCHER™ RECEPTACLE ASSEMBLY
		0°±2'		dwg no 65801
		dr T. BREWBAKER		sheet 6 of 7
		engr T. HANNA		A3
		chr J. MURPHY		Product Customer Drawing
sheet index	revision	appd T. HANNA		
		5/17/94		
		5/17/94		
		5/17/94		



PRODUCT NO. NOTE 9	NO. OF POSITIONS		DIM. L		DIM. M		DIM. C		DIM. C		PLATING		TERMINATION		CLOSED POS.		TERMINAL ABSENT	
	ENGLISH	METRIC	ENGLISH	METRIC	ENGLISH	METRIC	ENGLISH	METRIC	ENGLISH	METRIC	CODE	NOTE 6	NOTE 7	NOTE 7	NOTE 7	NOTE 7	NOTE 7	NOTE 7
65801-201	1.500	38.10	1.790	45.47	1.715	43.56	1	CONVENTIONAL	4	4	4	4	4	4	4	4	4	4.5.6
65801-202	0.400	10.16	0.690	17.53	0.615	15.62	2	CONVENTIONAL	3	3	3	3	3	3	3	3	3	3
65801-203	0.600	15.24	0.890	22.61	0.815	20.70	2	CONVENTIONAL	6	6	6	6	6	6	6	6	6	1.2.6.7
65801-204	0.900	22.86	1.190	30.23	1.115	28.32	1	CONVENTIONAL	4	4	4	4	4	4	4	4	4	4
65801-205	0.500	12.70	0.790	20.07	0.715	18.16	1	CONVENTIONAL	5	5	5	5	5	5	5	5	5	5
65801-206	0.400	10.16	0.690	17.53	0.615	15.62	1	CONVENTIONAL	4	4	4	4	4	4	4	4	4	4
65801-207	0.600	15.24	0.890	22.61	0.815	20.70	2	CONVENTIONAL	N/A	N/A	N/A	N/A	N/A	N/A	N/A	N/A	N/A	1.2.6.7
65801-208	0.300	7.62	0.590	14.99	0.515	13.08	1	CONVENTIONAL	N/A	N/A	N/A	N/A	N/A	N/A	N/A	N/A	N/A	2.3
65801-209	0.200	5.08	0.490	12.45	0.415	10.54	1	CONVENTIONAL	N/A	N/A	N/A	N/A	N/A	N/A	N/A	N/A	N/A	2

A

B

C

D

mat'l. code		surface		tolerance		projection		product family	
AN		ISD 1302	ISD 406	ISD 1101	ISD 1101	1st angle	1st angle	CLINCHER	CLINCHER
date		tolerances unless otherwise specified		angles		INCH/MM		title	
		.XX±.01/0.XX.3		0°±2°		scale 3:1		CLINCHER™ RECEPTACLE ASSEMBLY	
		.XXX±.002/0.000±0.051		dr T. BREWBAKER				dwg no sheet 7 of 7 size	
				engr T. HANNA				65801 A3	
				chr J. MURPHY				Product Customer Drawing	
sheet index	revision			appr T. HANNA					

6

5

4

A

B

C

D