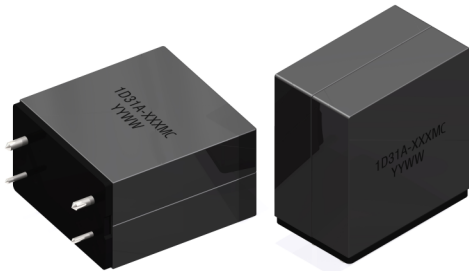


1D31A Series Class D Inductors



FEATURES

- Small Footprint
- Shielded Design for Low EMI
- Ferrite Material Designed for Audio Applications

APPLICATIONS

- Class D Audio Amplifiers

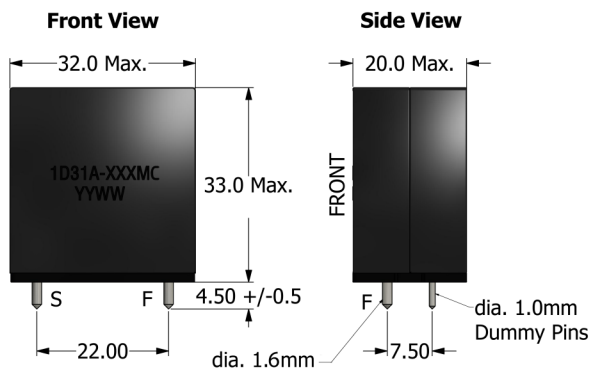
PACKAGING

Pieces/Tray: 40

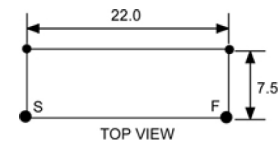
Trays/Box: 4

Pieces/Box: 160

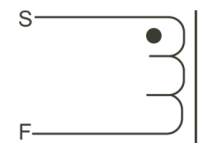
Mechanical Drawing



Footprint



Schematic



Unit: mm

Electrical Specifications

Part Number	L_s^1 ($\mu\text{H} \pm 20\%$)	DCR (m Ω , Max.)	I_{DC}^4 (A _{DC})	I_{SAT}^5 (A _{DC})
1D31A-100MC	10	6.3	12.5	50.0 min
1D31A-120MC	12	6.3	12.5	50.0 min
1D31A-150MC	15	6.9	12.0	42.0
1D31A-180MC	18	6.3	12.5	32.0
1D31A-220MC	22	6.9	12.0	31.0

NOTES:

1. Tested at 100kHz, 1 Vrms, Series.
2. Electrical specifications at 25°C.
3. Operating range: -40°C to +130°C. This is a combination of ambient plus temperature rise.
4. DC current through the winding to cause a 40°C temperature rise at 25°C ambient.
5. DC current through the winding to cause a 25% (Typ.) drop in inductance.
6. Meets UL 94V-0.

Specifications subject to change without prior notice.



Mouser Electronics

Authorized Distributor

Click to View Pricing, Inventory, Delivery & Lifecycle Information:

ICE Components:

[1D31A-180MC](#) [1D31A-100MC](#) [1D31A-120MC](#) [1D31A-220MC](#) [1D31A-150MC](#)