

CleanSIGN – The “Hygienic Design” LED Signal Tower

WERMA already has the appropriate solution to the challenges engineers and food manufacturers will have to face in the future: **The new LED signal tower CleanSIGN** has been specially developed and constructed for use in **food and hygiene areas** as well as **cleanroom applications**. Right from the start, existing standards and guidelines were given careful consideration (e.g. EHEDG* Documents 8 and 13, Machine Directive 2006/42/EG), and experts in the field of **Hygienic Design** were called upon for advice.

The new CleanSIGN is equipped with a series of **sophisticated technical, constructional and design features** which make a significant contribution to the safety of your products. For example, the CleanSIGN has **no grooves or joints** where dirt could collect, facilitating **quick and easy cleaning**.

What is Hygienic Design?

The term “Hygienic Design” stands for the **hygienic and cleaning-friendly design** of all machinery, equipment and components deployed in hygiene-relevant areas of food, drink, pharmaceutical, cosmetics and cleanroom production processes.

In addition, “Hygienic Design” includes **design principles for the prevention of constructional weak spots** that could potentially increase hygiene related dangers or the risk of infection and disease transmission.

Unique “Hygienic Design” Signal Tower

30° slope

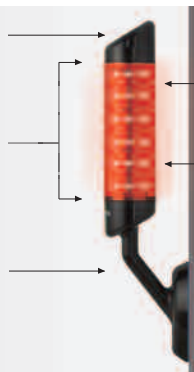
- Min. 30° slope in accordance with EHEDG
- Allows fluids to drain quickly
- Ease of inspection
- Quick and simple cleaning

Compact design

- No uneven surfaces, grooves, raised or countersunk elements
- No additional joints where dirt could collect
- One-piece, welded construction

Terminal element and mounting

- Bracket in one piece
- No additional joints where dirt could collect



Polyamide housing

- Resistant to cleaning agents
- Food safe
- FDA approval (Food & Drug Administration)

Continuation of the 30° slope

- Fixing and connection from the rear
- No holes at the front where dirt could collect
- Housing completely enclosed
- Pine Tree Clip® for quick and simple fixing

Durable seal

- Prevents any openings
- Hygienic material

The key advantages

- ✓ Food safety due to the absence of uneven surfaces, raised or countersunk elements where dirt could collect
- ✓ Cleaning-friendly and hygienic design for optimal cleaning and disinfection
- ✓ Use of food safe materials (FDA approval) and resistant to cleaning agents
- ✓ EHEDG* and Fraunhofer approvals in preparation
- ✓ Pine Tree Clip® for quick and simple fixing
- ✓ Electronic modularity of the individual tiers
- ✓ Maintenance-free thanks to LED technology with a high life duration of up to 50,000 hrs

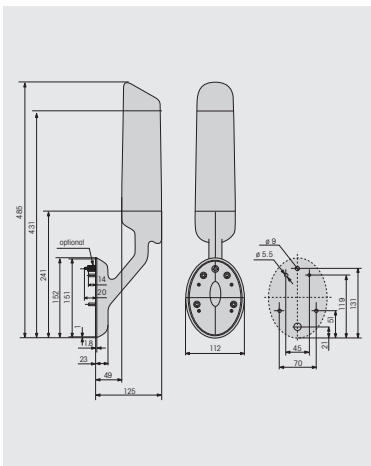




Fixed, three tier colour distribution in red, yellow and green



In its inactive state, the signal tower blends into the background thanks to its translucent housing



- LED signal tower for use in the food and cosmetic industry as well as in cleanroom applications
- Permanent lights in red, yellow and green (SMD technology)
- Preset, three tier colour distribution
- Hygienic and cleaning-friendly design
- Developed in accordance EHDG* directives
- Resistant to cleaning agents
- Integrated, high output buzzer (85 dB)

i TECHNICAL SPECIFICATIONS:

Dimensions (B x H x T):	112 mm x 485 mm x 125 mm
Housing:	PA, black
Dome:	PA, transparent
Fixing:	Wall mounting, integrated mounting bracket
Connection:	Cable, 2 m long, included in the assembly
Operating voltage:	24 V =
Current consumption:	Light: up to 55 mA per tier Buzzer: 20 mA

🛒 ORDER SPECIFICATIONS:

	24 V =
red/yellow/green	695 300 55

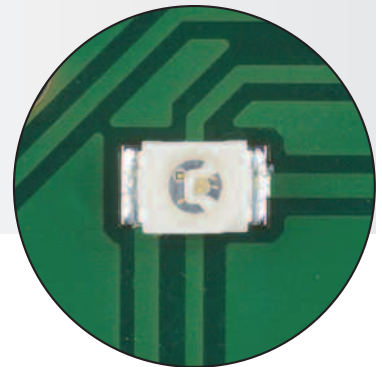
Available: 1st Quarter 2010.

⚠️ ADDITIONAL INFORMATION:

The new LED signal tower CleanSIGN has been specially developed and constructed for use in food and hygiene areas as well as in cleanroom applications. Right from the start, existing standards and guidelines were given careful consideration (e.g. EHDG* Document 8 and 13, Machine Directive 2006/42/EG), and experts in the field of Hygienic Design were called upon for advice.

* EHDG = European Hygienic Engineering and Design Group

The goal of this consortium, made up of equipment manufacturers, food processing industries, research institutes and public health authorities, is the development and publishing of directives on hygiene technology for the processing and packaging of food products.



Fixed colour distribution with SMD technology

In preparation In preparation In preparation



The colours red, yellow and green can set via DIP switch for any required order or distribution



Attention-grabbing illumination in one colour (can be triggered externally)

- LED signal tower for use in the food and cosmetic industry as well as in cleanroom applications
- Permanent light in red, yellow and green (RGY LEDs)
- Complete illumination in one colour possible (can be triggered externally)
- Colour distribution can be set and adjusted via DIP switch as required
- Flexible colour distribution thanks to electronic modularity
- User-friendly mounting
- Integrated, high output buzzer (85 dB)

i TECHNICAL SPECIFICATIONS:

Dimensions (B x H x T):	112 mm x 485 mm x 125 mm
Housing:	PA, black
Dome:	PA, transparent
Fixing:	Wall mounting, integrated mounting bracket
Connection:	Screwable connection, max. 1.5 mm ²
Operating voltage:	24 V =
Current consumption:	Light: depending on the colour combination, up to 120 mA max. Buzzer: 20 mA

ORDER SPECIFICATIONS:

	24 V =
red/green/yellow (RGY LEDs)	695 200 55

Available: 1st Quarter 2010.

! ADDITIONAL INFORMATION:

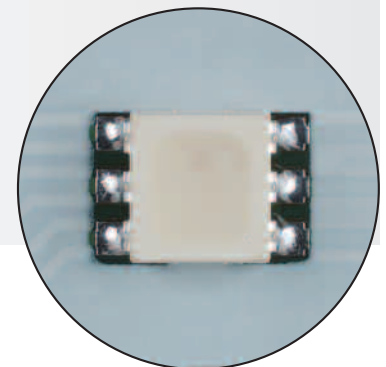
Simple mounting

A so called "Pine Tree Clip®" enables quick and simple mounting. The attachment and connection of the tower is carried out from the rear. As a consequence the housing is completely closed and holes are avoided.

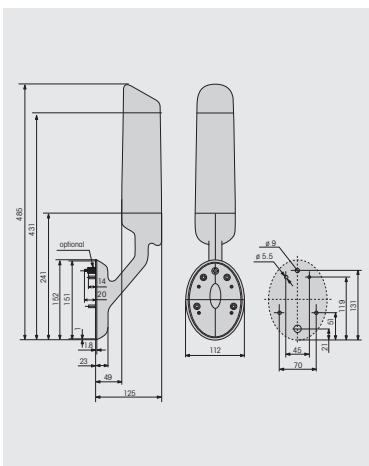
Wide range of sophisticated design features

The new CleanSIGN from WERMA is equipped with a series of sophisticated technical, constructional and design features which make a significant contribution to the safety of your products.

For example, the CleanSIGN has no grooves or joints where dirt could collect, facilitating quick and easy cleaning.



Completely flexible colour distribution thanks to RGY LEDs



In preparation In preparation In preparation

CE c UL us ENEC IFA Fraunhofer IPEL DEVIC 420 g +40°C -30°C 85 dB



Complete illumination in one colour



The "EVS" light effect ensures a maximum attention-grabbing effect (can be set with complete illumination)

- LED signal tower for use in the food and cosmetic industry as well as in cleanroom applications
- Permanent light and additional light effects
- 7 colours selectable: red, yellow, green, clear, blue, violet, turquoise (RGB LEDs)
- Flexible colour distribution thanks to electronic modularity
- Complete illumination in one colour possible (can be triggered externally)
- Colour distribution can be set and adjusted via DIP switch as required
- User-friendly mounting
- Integrated buzzer (85 dB)

i TECHNICAL SPECIFICATIONS:

Dimensions (B x H x T):	112 mm x 485 mm x 125 mm
Housing:	PA, black
Dome:	PA, transparent
Fixing:	Wall mounting, integrated mounting bracket
Connection:	Screwable connection, max. 1.5 mm ²
Operating voltage:	24 V ⁼⁼
Current consumption:	Light: depending on the colour combination, up to 500 mA max. Buzzer: 20 mA
Possible colours:	red, yellow, green, clear, blue, violet, turquoise
Light effects:	Tier-by-tier illumination: Blinking light Complete illumination: EVS*

ORDER SPECIFICATIONS:

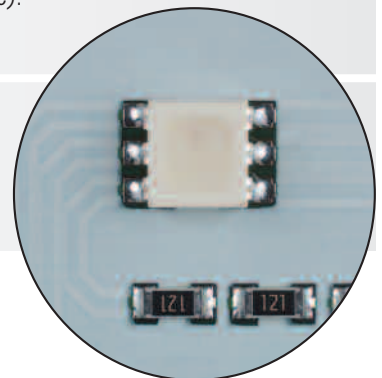
	24 V ⁼⁼
red, yellow, green, clear, blue, violet, turquoise (RGB LEDs)	695 000 55
Available: 1st Quarter 2010.	

! ADDITIONAL INFORMATION:

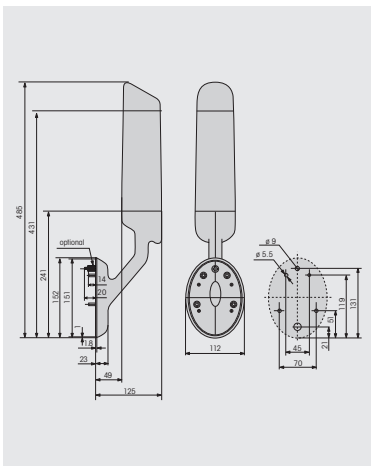
Additional light effects and 7 colours
Thanks to the use of RGB LEDs, the third version guarantees complete flexibility: In addition to the permanent light, additional light effects (EVS* LED or blinking light) can also be set. Furthermore, the entire tower or the 3 individual tiers can be illuminated in seven different colours (red, yellow, green, blue, clear, violet, turquoise).

* EVS = Enhanced Visibility System

Further information is available on page 24, in our main catalogue or at www.werma.com.



7 different colours settings from RGB LEDs



In preparation In preparation In preparation

CE cULus ENEC IFA Fraunhofer FESSEL DEVILE 420 g +40°C -30°C 85 dB