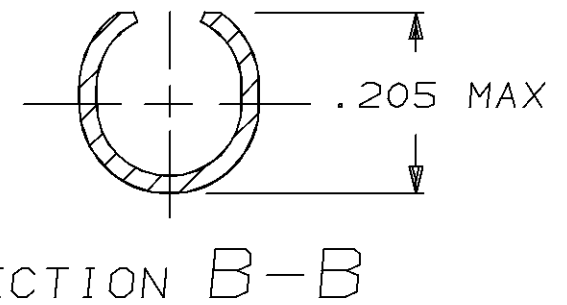
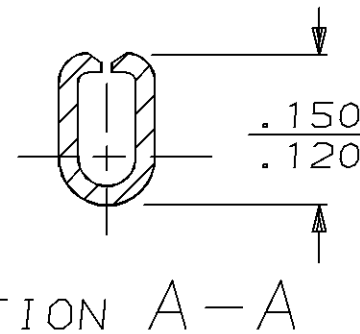
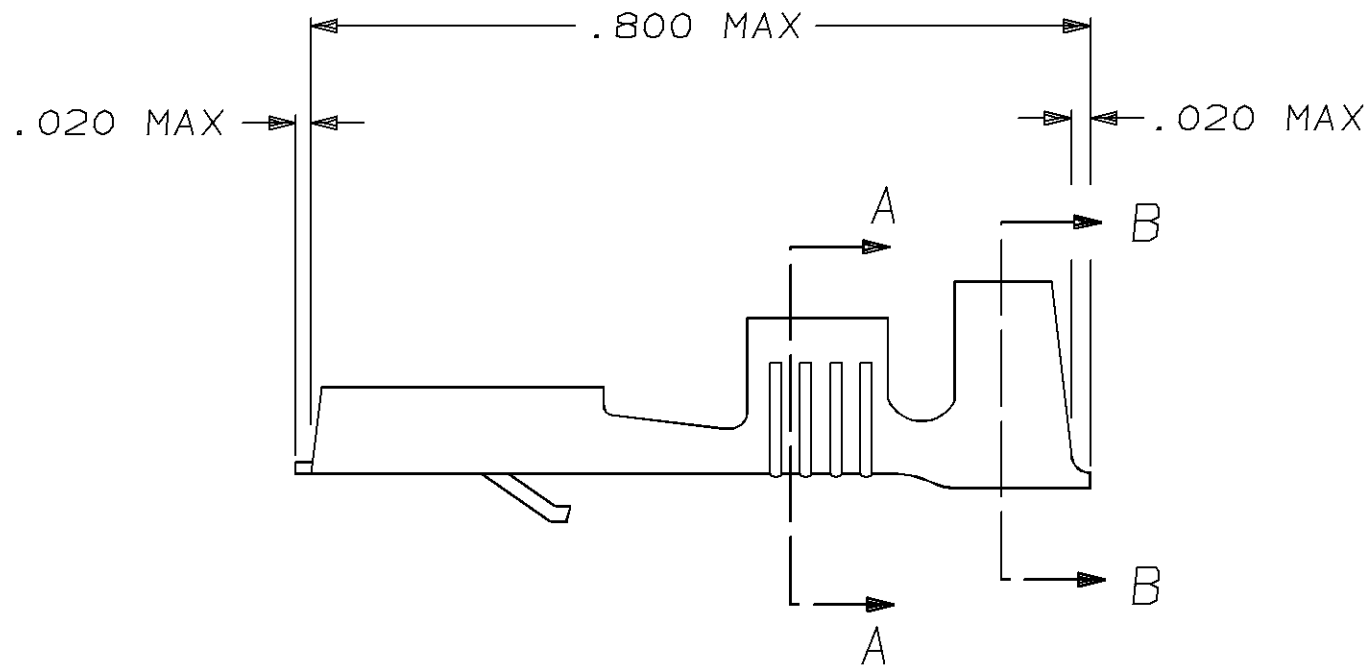


THIS DRAWING IS UNPUBLISHED. RELEASED FOR PUBLICATION, 19 .
 © COPYRIGHT 19 BY AMP INCORPORATED. ALL INTERNATIONAL RIGHTS RESERVED.

LOC	DIST	P	F	REVISIONS				
AF	50			ZONE	LTR	DESCRIPTION	DATE	APPD
					B	REV PER 0710-0186-95	5/4/95	JR/JG

- 1 SUPPLIED IN LOOSE PIECE FORM.
- 2 SEE STRIP DWG. 42281 FOR ADDITIONAL DETAILS.



OBSOLETE	SILVER	BRASS	.120-.160 DIA	#18-#14 AWG	.032	42282-3
	TIN	BRASS	.120-.160 DIA	#18-#14 AWG	.032	42282-2
	-	BRASS	.120-.160 DIA	#18-#14 AWG	.032	42282-1
FINISH	MATERIAL	INSUL RANGE	WIRE SIZE	MATING TAB THK ±.001	PART NO	

DO NOT SCALE PRINT. UNLESS SPECIFIED DIMENSIONS IN mm [INCHES] TOLERANCES ON: 2 PLC DEC ± - 3 PLC DEC ± .015 ANGLES ± - MATERIAL SEE TABLE FINISH SEE TABLE	DR 6/16/92 JR RUTH	AMP AMP Incorporated Harrisburg, PA 17105-3608 NAME RECEPTACLE, FASTIN-FASTON, .250 SERIES SIZE B CAGE CODE 00779 DRAWING NO C-42282 SCALE 5:1 SHEET 1 OF 1
	CHK 6/16/92 MS FEHER	
	APPD 6/16/92 J GILLESPIE	
	APPD 6/16/92 D REINER	
PRODUCT SPEC -	APPLICATION SPEC -	WEIGHT -

THIS DRAWING IS A CONTROLLED DOCUMENT FOR AMP INCORPORATED. IT IS SUBJECT TO CHANGE AND THE CONTROLLING ENGINEERING ORGANIZATION SHOULD BE CONTACTED FOR THE LATEST REVISION.