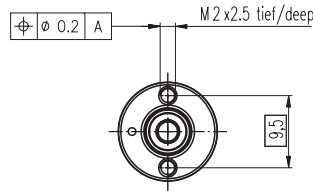
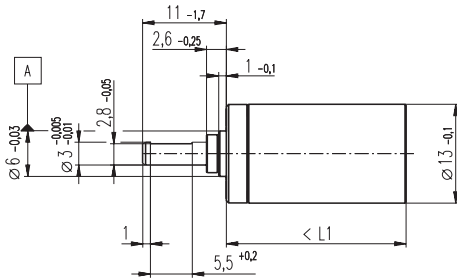


Planetary Gearhead GP 13 A $\varnothing 13$ mm, 0.2 - 0.35 Nm

Metal Version



Technical Data

Planetary Gearhead	straight teeth
Output shaft	stainless steel, hardened
Bearing at output	sleeve bearings*
Radial play, 6 mm from flange	max. 0.055 mm
Axial play	0.02 - 0.10 mm
Max. permissible axial load	8 N
Max. permissible force for press fits	100 N
Recommended input speed	< 8000 rpm
Recommended temperature range	-15 ... +100°C
Number of stages	1 2 3 4 5
Max. perm. radial load, 6 mm from flange	8 N 12 N 16 N 20 N 20 N

*Options: Ball bearing

M 1:1

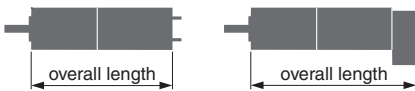
- Stock program
- Standard program
- Special program (on request!)

Order Number

110313	110314	110315	110316	110317
--------	--------	--------	--------	--------

Gearhead Data		110313	110314	110315	110316	110317
1 Reduction		4.1 : 1	17 : 1	67 : 1	275 : 1	1119 : 1
2 Reduction absolute		57/14	3249/196	185193/2744	10556001/38416	601692057/537824
3 Number of stages		1	2	3	4	5
4 Max. continuous torque at gear output	Nm	0.20	0.20	0.30	0.30	0.35
5 Intermittently permissible torque at gear output	Nm	0.30	0.30	0.45	0.45	0.53
6 Sense of rotation, drive to output		=	=	=	=	=
7 Max. efficiency	%	91	83	75	69	62
8 Weight	g	11	14	17	20	23
9 Average backlash no load	°	1.0	1.2	1.5	1.8	2.0
10 Mass inertia	gcm ²	0.025	0.015	0.015	0.015	0.015
11 Gearhead length L1	mm	16.0	19.9	23.7	27.6	31.4

* for A-max 12 and RE-max 13 is L1 + 0.2 mm



Combination:

+ Motor	Page	+ Tacho / Encoder / Brake	Page	Overall length [mm] = Motor length + gearhead length + (tacho / encoder / brakes) + assembly parts				
RE 13	56 / 58			35.4	39.3	43.1	47.0	50.8
RE 13, 0.75 W	58	MR Encoder	206-209	42.5	46.4	50.2	54.1	57.9
RE 13, 0.75 W	58	Digital Magnetic Encoder 13	223	43.2	47.1	50.9	54.8	58.6
RE 13	60 / 62			47.6	51.5	55.3	59.2	63.0
RE 13, 2 W	62	MR Encoder	206-209	54.7	58.6	62.4	66.3	70.1
RE 13, 2 W	62	Digital Magnetic Encoder 13	223	55.4	59.3	63.1	67.0	70.8
RE 13, 1.5 W	64 / 66			38.5	42.4	46.2	50.1	53.9
RE 13, 1.5 W	66	MR Encoder	206-209	44.6	48.5	52.3	56.2	60.0
RE 13, 1.5 W	66	Digital Magnetic Encoder 13	223	46.5	50.4	54.2	58.1	61.9
RE 13, 3 W	68 / 70			50.7	54.6	58.4	62.3	66.1
RE 13, 3 W	70	MR Encoder	206-209	56.8	60.7	64.5	68.4	72.2
RE 13, 3 W	70	Digital Magnetic Encoder 13	223	58.7	62.6	66.4	70.3	74.1
A-max 12	99 / 100			37.6	41.5	45.3	49.2	53.0
A-max 12	100	MR Encoder	206/207	41.5	45.4	49.2	53.1	56.9
RE-max 13	127/128			36.9	40.8	44.6	48.5	52.3
RE-max 13	128	MR Encoder	206-209	41.6	45.5	49.3	53.2	57.0
RE-max 13	129/130			47.9	51.8	55.6	59.5	63.3
RE-max 13	130	MR Encoder	206-209	52.6	56.5	60.3	64.2	68.0