

# Customer Information Sheet

DRAWING No.: M80-877XXXX

IF IN DOUBT - ASK

©

NOT TO SCALE

THIRD ANGLE PROJECTION

ALL DIMENSIONS IN mm

**SPECIFICATIONS:**

**MATERIAL:**

MOULDING = GLASS-FILLED POLYESTER,  
UL94V-0, BLACK

CONTACTS = PHOSPHOR BRONZE

LATCHES = BERYLLIUM COPPER

**FINISH:**

**CONTACTS:**

05 = 0.75µm GOLD

22 = 0.75µm GOLD ON CONTACT AREA.

3.0µm 90/10 TIN/LEAD ON TAILS

LATCH = 1.25µm NICKEL

**ELECTRICAL:**

CURRENT RATING (25°C) = 3.0A MAX.

CURRENT RATING (85°C) = 2.2A MAX.

WORKING VOLTAGE = 800V AC/DC

VOLTAGE PROOF = 1200V AC/DC

**CONTACT RESISTANCE:**

INITIAL = 20 mΩ MAX.

AFTER CONDITIONING = 25 mΩ MAX.

**INSULATION RESISTANCE:**

INITIAL = 1000 MΩ MIN.

AFTER CONDITIONING = 100 MΩ MIN.

**MECHANICAL:**

DURABILITY = 500 OPERATIONS

INSERTION FORCE (∅0.5mm GAUGE) = 2.0N MAX

WITHDRAWAL FORCE (∅0.5mm GAUGE) = 0.2N MIN

**ENVIRONMENTAL:**

TEMPERATURE RANGE = -55°C TO +125°C

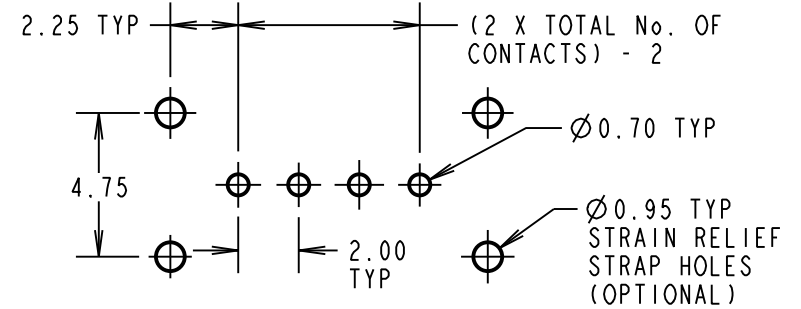
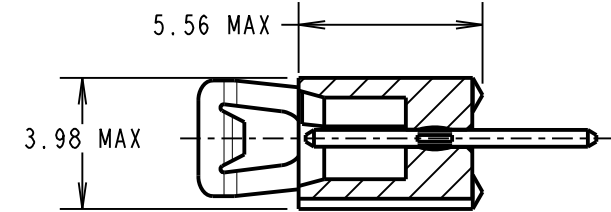
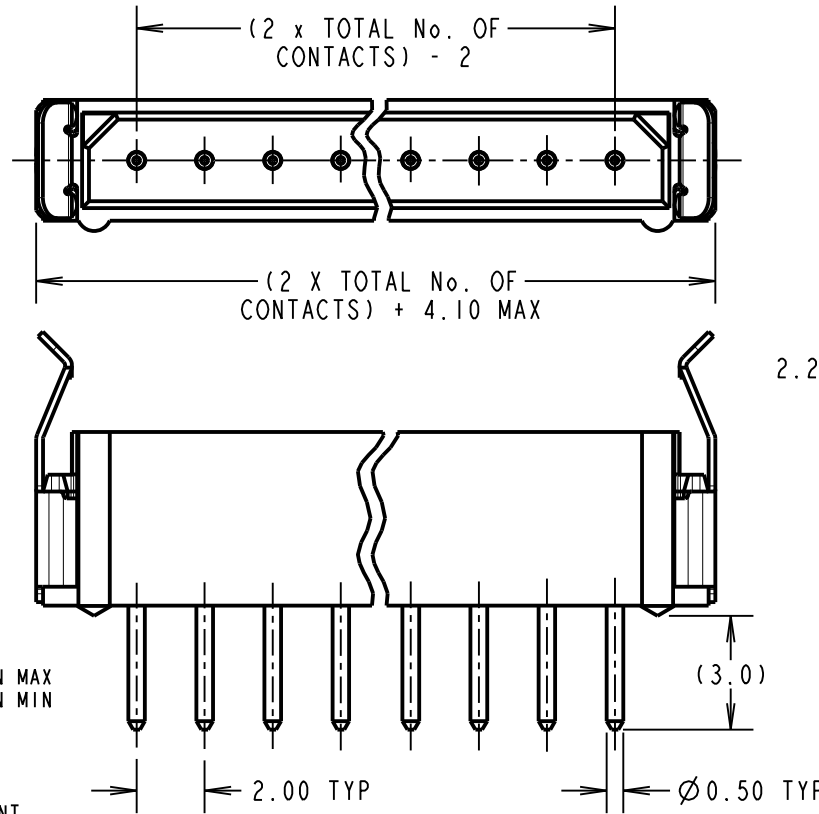
**PACKING:**

TUBE

FOR COMPLETE SPECIFICATION, SEE COMPONENT SPECIFICATION C005XX (LATEST ISSUE)

**NOTES:**

- 2-OFF STRAIN RELIEF STRAPS M80-0030006 MAY BE USED WITH THIS CONNECTOR.
- FOR RoHS COMPLIANT EQUIVALENT PRODUCT USE M80-882XXXX CONNECTORS.



BRITISH STANDARD ORDER CODE:

**B5743-1XX-M-T-X**

TOTAL No. OF WAYS  
02 - 07, 17, 22.

FINISH:  
1 = SELECTIVE GOLD + TIN/LEAD  
3 = GOLD

ORDER CODE:

**M80-877XXXX**

TOTAL No. OF WAYS  
02 - 07, 17, 22.

FINISH:  
05 = GOLD  
22 = SELECTIVE GOLD & TIN/LEAD

MGP	15	01.12.21	31135
NAME	ISS.	DATE	CN/CO
APPROVED: MGP			
CHECKED: RA			
DRAWN: J. CLAY			
CUSTOMER REF.:			
ASSEMBLY DRG:			

**HARWIN**

www.harwin.com  
technical@harwin.com

THIS DRAWING AND ANY INFORMATION OR DESCRIPTIVE MATTER SET OUT HEREON ARE CONFIDENTIAL AND COPYRIGHT PROPERTY OF THE HARWIN GROUP AND MUST NOT BE DISCLOSED, LOANED, COPIED OR USED FOR MANUFACTURING, TENDERING OR FOR ANY OTHER PURPOSE WITHOUT THEIR WRITTEN PERMISSION.

**TOLERANCES**  
X. = ±1mm  
X.X = ±0.50mm  
X.XX = ±0.20mm  
X.XXX = ±0.01mm  
ANGLES = ±5°  
UNLESS STATED

**MATERIAL:**

SEE ABOVE

**FINISH:** SEE ABOVE

**S/AREA:**

mm<sup>2</sup>

**TITLE:**

DATAMATE SIL  
VERTICAL MALE PC TAIL  
ASSEMBLY - LATCHED

**DRAWING NUMBER:**

**M80-877XXXX**

SHT  
2 OF 2

# Mouser Electronics

Authorized Distributor

Click to View Pricing, Inventory, Delivery & Lifecycle Information:

## Harwin:

[M80-8770322](#) [M80-8770222](#) [M80-8770622](#) [M80-8770422](#) [M80-8772222](#) [M80-8771722](#) [B5743-117-M-T-1](#) [B5743-107-M-T-1](#) [B5743-103-M-T-1](#) [B5743-105-M-T-1](#) [B5743-104-M-T-1](#) [B5743-106-M-T-1](#) [B5743-102-M-T-1](#) [B5743-102-M-T-3](#) [M80-8770205](#) [M80-8770405](#) [M80-8770705](#) [M80-8771705](#) [M80-8770522](#) [M80-8770722](#) [B5743-103-M-T-3](#) [B5743-105-M-T-3](#) [B5743-107-M-T-3](#) [B5743-104-M-T-3](#) [B5743-106-M-T-3](#)