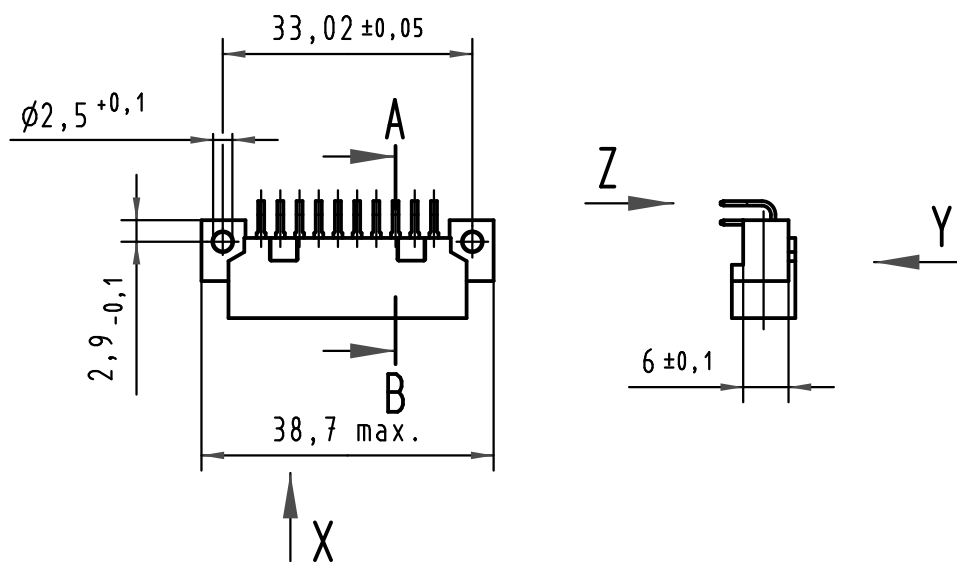
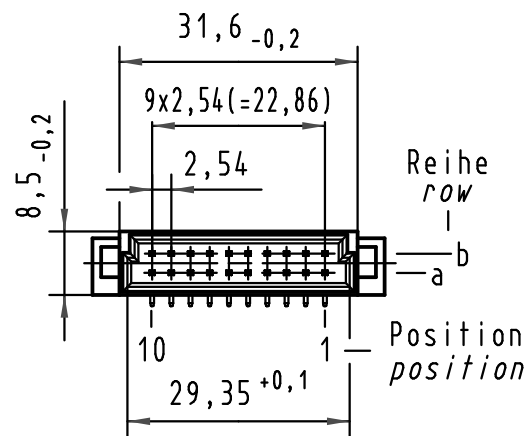
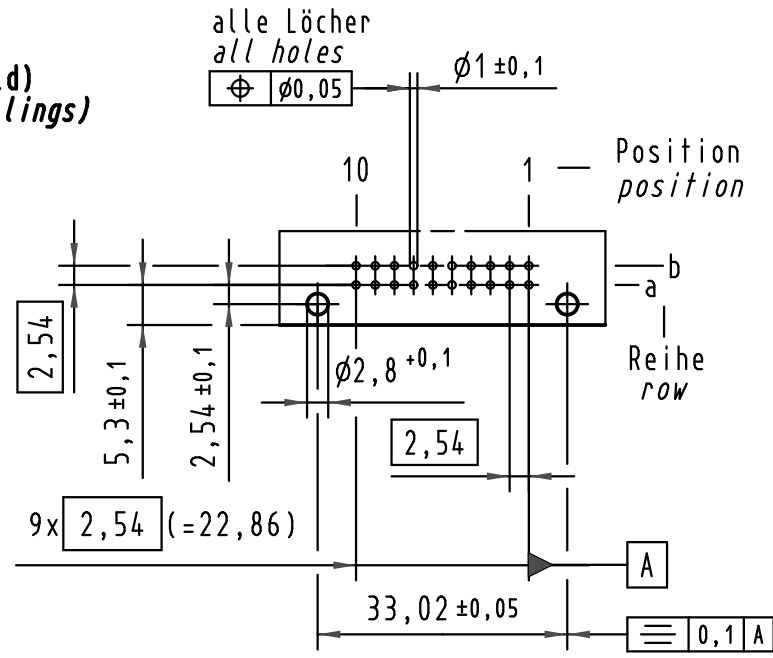
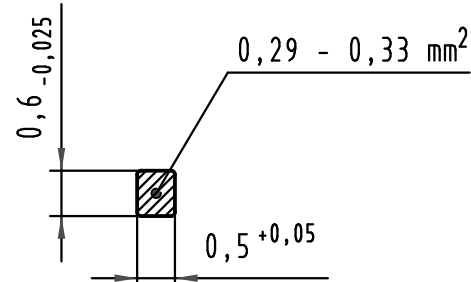


Y
(Lochbild)
(board drillings)

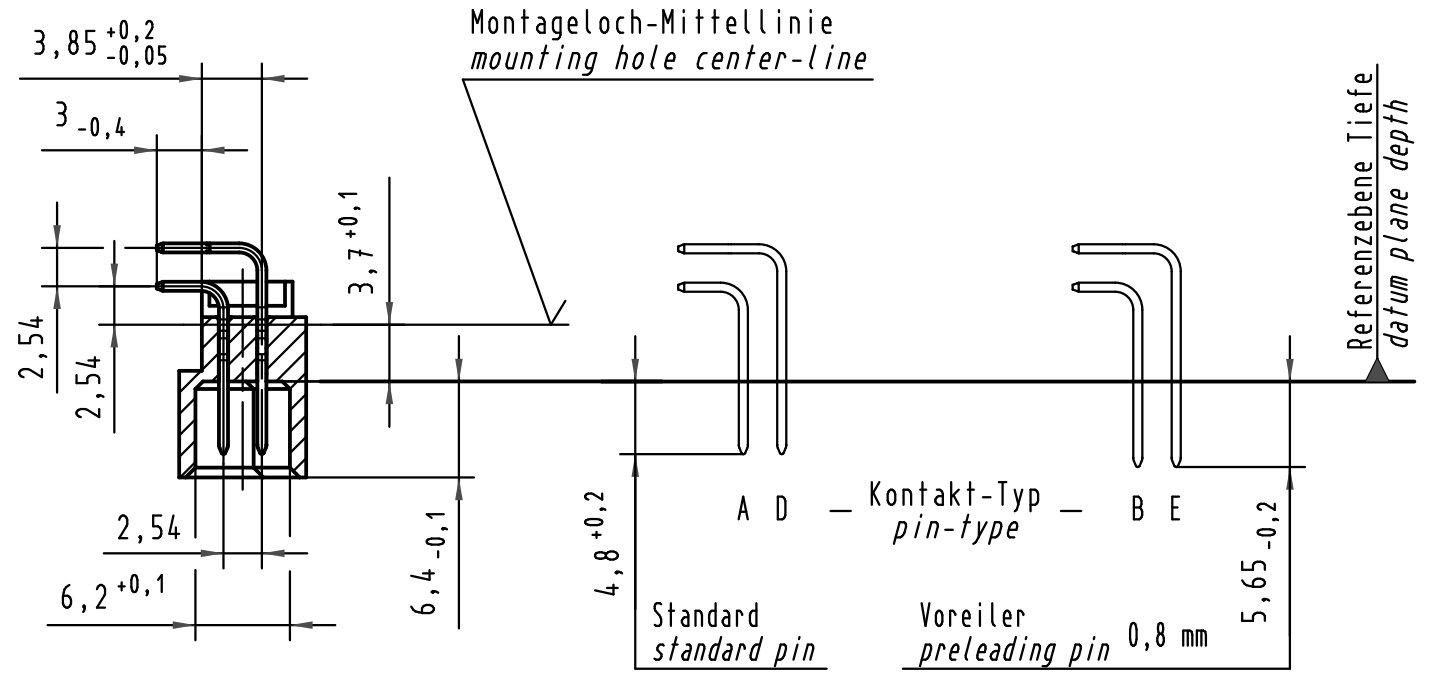


Z
10:1

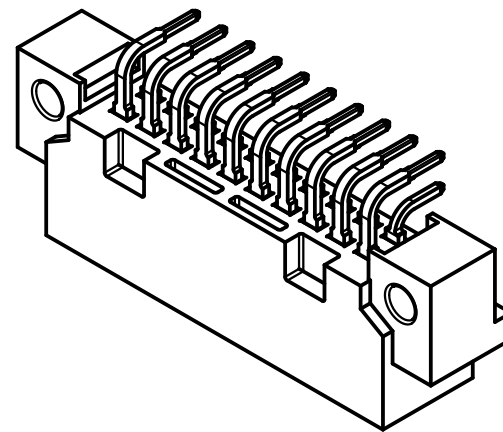
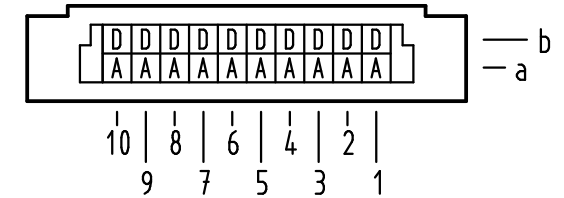
Querschnitt der
Lötanschlüsse:
cross-section of
solder terminations:



A-B
2:1



X Kontaktbelegung
contact loading



09 24 120 6919	2	Au flash over PdNi over Ni
Bestell-Nr. part-no.	Anforderungsstufe nach IEC performance level acc. to IEC	Kontaktoberfläche contact plating

 All Dimensions in mm Original Size DIN A 3	Techn. Character.			Nicht tolerierte Maße/Free size tolerances IEC 60603-2	
	Detail.	25.06.09	MS	Maßstab/Scale 1:1 2:1 10:1	Bauform 3B Messerleiste Einlöt , 20 pol., SMC (Hochtemperatur) type 3B male connector solder , 20 pol., SMC (high temperature)
	Insp.	25.06.09	RA		
	Stand.				
Mod.	Dat.	Name	HARTING Electronics GmbH & Co. KG D-32339 ESPELKAMP	 TB 09 24 120 x919 Sub.	Blatt/page