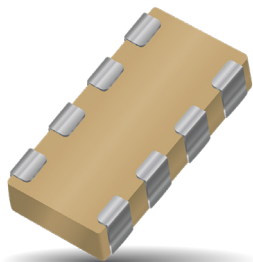


Capacitor Array

Automotive Capacitor Array (IPC)



As the market leader in the development and manufacture of capacitor arrays AVX is pleased to offer a range of AEC-Q200 qualified arrays to compliment our product offering to the Automotive industry. Both the AVX 0612 and 0508 4-element capacitor array styles are qualified to the AEC-Q200 automotive specifications.

AEC-Q200 is the Automotive Industry qualification standard and a detailed qualification package is available on request. All AVX automotive capacitor array production facilities are certified to ISO/TS 16949:2002.

HOW TO ORDER

W	3	A	4	Y	C	104	K	4	T	2A
↓	↓	↓	↓	↓	↓	↓	↓	↓	↓	↓
Style W = RoHS L = SnPb	Case Size 2 = 0508 3 = 0612	Array	Number of Caps	Voltage Z = 10V Y = 16V 3 = 25V 5 = 50V 1 = 100V	Dielectric A = NP0 C = X7R F = X8R	Capacitance Code (In pF) Significant Digits + Number of Zeros e.g. 10µF=106	Capacitance Tolerance *J = ±5% *K = ±10% *M = ±20%	Failure Rate 4 = Automotive	Terminations *T = Plated Ni and Sn *Z = FLEXITERM® B = 5% min lead X = FLEXITERM® with 5% min lead	Packaging & Quantity Code 2A = 7" Reel (4000) 4A = 13" Reel (10000) 2F = 7" Reel (1000)

*RoHS Compliant

*Contact factory for availability by part number for K = ±10% and J = ±5% tolerance.

NP0/COG

SIZE	W3 = 0612		
	Reflow/Wave		
No. of Elements	16	25	50
1R0	Cap 1.0		
1R2	1.2		
1R5	1.5		
1R8	1.8		
2R2	2.2		
2R7	2.7		
3R3	3.3		
3R9	3.9		
4R7	4.7		
5R6	5.6		
6R8	6.8		
8R2	8.2		
100	10		
120	12		
150	15		
180	18		
220	22		
270	27		
330	33		
390	39		
470	47		
560	56		
680	68		
820	82		
101	100		
121	120		
151	150		
181	180		
221	220		
271	270		
331	330		
391	390		
471	470		
561	560		
681	680		
821	820		
102	1000		
122	1200		
152	1500		
182	1800		
222	2200		
272	2700		
332	3300		
392	3900		
472	4700		
562	5600		
682	6800		
822	8200		

■ = NP0/COG

X7R

SIZE	W2 = 0508				W2 = 0508				W3 = 0612				
	2				4				4				
No. of Elements	16	25	50	100	16	25	50	100	10	16	25	50	100
101	Cap 100												
121	120												
151	150												
181	180												
221	220												
271	270												
331	330												
391	390												
471	470												
561	560												
681	680												
821	820												
102	1000												
122	1200												
152	1500												
182	1800												
222	2200												
272	2700												
332	3300												
392	3900												
472	4700												
562	5600												
682	6800												
822	8200												
103	Cap 0.010												
123	0.012												
153	0.015												
183	0.018												
223	0.022												
273	0.027												
333	0.033												
393	0.039												
473	0.047												
563	0.056												
683	0.068												
823	0.082												
104	0.10												
124	0.12												
154	0.15												
224	0.22												

■ = X7R

*Not RoHS Compliant



LEAD-FREE

LEAD-FREE COMPATIBLE COMPONENT



RoHS COMPLIANT

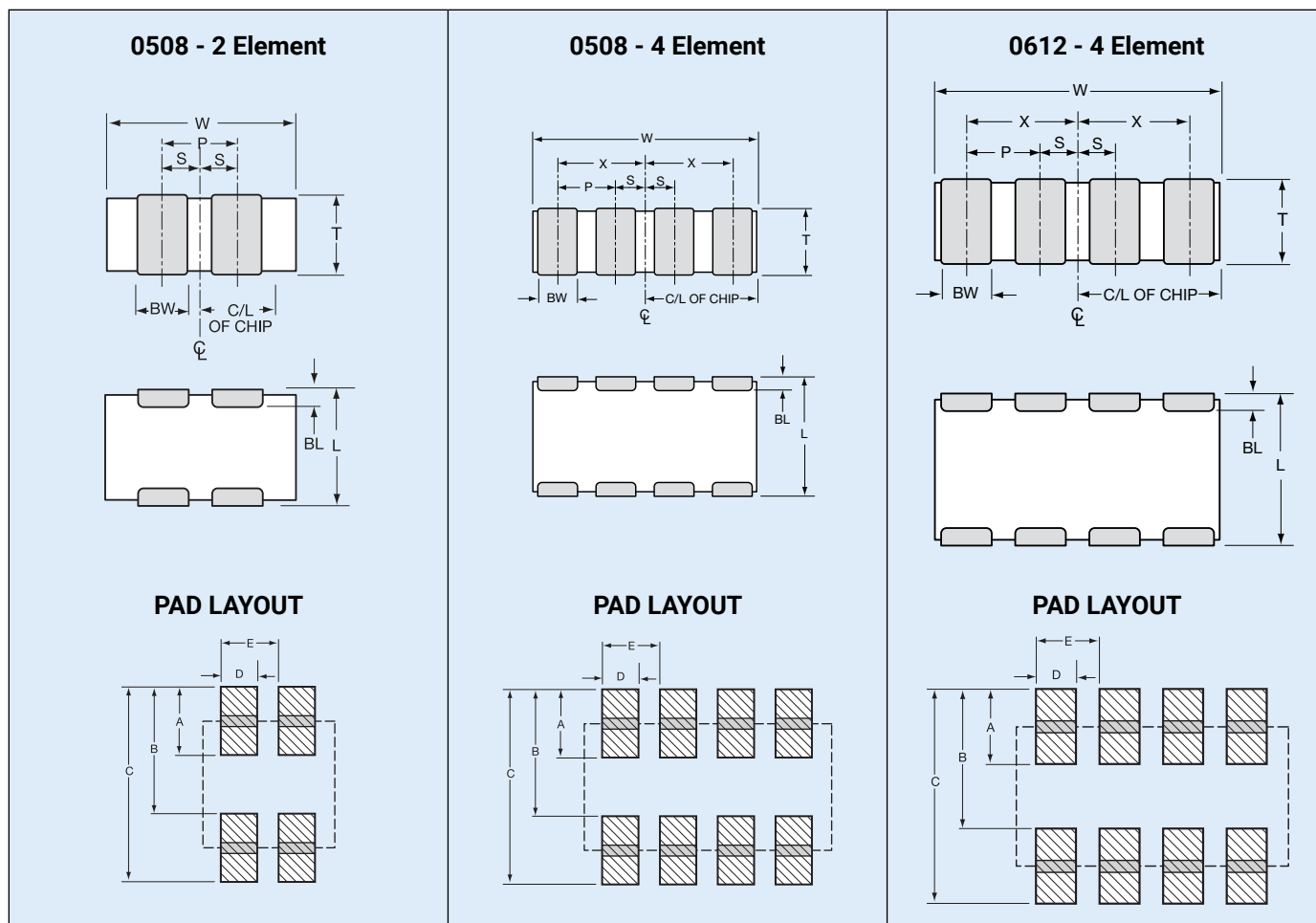
For RoHS compliant products, please select correct termination style.

Capacitor Array

Part & Pad Layout Dimensions

PART & PAD LAYOUT DIMENSIONS

millimeters (inches)



PART DIMENSIONS

0508 - 2 Element

L	W	T	BW	BL	P	S
1.30 ± 0.15 (0.051 ± 0.006)	2.10 ± 0.15 (0.083 ± 0.006)	0.94 MAX (0.037 MAX)	0.43 ± 0.10 (0.017 ± 0.004)	0.33 ± 0.08 (0.013 ± 0.003)	1.00 REF (0.039 REF)	0.50 ± 0.10 (0.020 ± 0.004)

0508 - 4 Element

L	W	T	BW	BL	P	X	S
1.30 ± 0.15 (0.051 ± 0.006)	2.10 ± 0.15 (0.083 ± 0.006)	0.94 MAX (0.037 MAX)	0.25 ± 0.06 (0.010 ± 0.003)	0.20 ± 0.08 (0.008 ± 0.003)	0.50 REF (0.020 REF)	0.75 ± 0.10 (0.030 ± 0.004)	0.25 ± 0.10 (0.010 ± 0.004)

0612 - 4 Element

L	W	T	BW	BL	P	X	S
1.60 ± 0.20 (0.063 ± 0.008)	3.20 ± 0.20 (0.126 ± 0.008)	1.35 MAX (0.053 MAX)	0.41 ± 0.10 (0.016 ± 0.004)	0.18 ^{+0.25} _{-0.08} (0.007 ^{+0.010} _{-0.003})	0.76 REF (0.030 REF)	1.14 ± 0.10 (0.045 ± 0.004)	0.38 ± 0.10 (0.015 ± 0.004)

PAD LAYOUT DIMENSIONS

0508 - 2 Element

A	B	C	D	E
0.68 (0.027)	1.32 (0.052)	2.00 (0.079)	0.46 (0.018)	1.00 (0.039)

0508 - 4 Element

A	B	C	D	E
0.56 (0.022)	1.32 (0.052)	1.88 (0.074)	0.30 (0.012)	0.50 (0.020)

0612 - 4 Element

A	B	C	D	E
0.89 (0.035)	1.65 (0.065)	2.54 (0.100)	0.46 (0.018)	0.76 (0.030)

Mouser Electronics

Authorized Distributor

Click to View Pricing, Inventory, Delivery & Lifecycle Information:

AVX:

[W2A2YC102MAT2A](#) [W2A2YC103MAT2A](#) [W2A41A330KAT2A](#) [W2A43A470KAT2A](#) [W2A45A101KAT2A](#)
[W2A45C103KAT2A](#) [W2A45C471MAT2A](#) [W2A4YC103KAT2A](#) [W2A4YC103MAT2A](#) [W2A4YC104MAT2A](#)
[W2A4YD103KAT2A](#) [W2A4ZC103MAT2A](#) [W2A4ZC104MAT2A](#) [W2A4ZD104KAT2A](#) [W2A4ZD104MAT2A](#)
[W3A41A220KAT2A](#) [W3A41A221KAT2A](#) [W3A41A331KAT2A](#) [W3A41C103KAT2A](#) [W3A41C103MAT2A](#)
[W3A41C222KAT2A](#) [W3A41C471K4T2A](#) [W3A41C472KAT2A](#) [W3A43A221KAT2A](#) [W3A43C102MAT2A](#)
[W3A43C332KAT2F](#) [W3A45A101JAT2F](#) [W3A45A101KAT2A](#) [W3A45A330KAT2A](#) [W3A45A470KAT2A](#)
[W3A45C103KAT2A](#) [W3A45C103MAT2A](#) [W3A45C222KAT2A](#) [W3A45C333MAT2F](#) [W3A45C471MAT2A](#)
[W3A4YC102MAT2A](#) [W3A4YC103MAT2A](#) [W3A4YC104KAT2A](#) [W3A4YC104MAT2A](#) [W3A45A471KAT2A](#)
[W3A45C472MAT2A](#) [W3A45C102MAT2A](#) [W3A45C473MAT2A](#) [W3A43C332MAT2F](#) [W3A4YC104MAT1A](#)
[W3A45A151KAT2A](#) [W2A43C103M4T2A](#) [W3A43C472KAT2A](#) [W2A4YC222KAT2A](#) [W3A43A181KAT2A](#)
[W3A45A100KAT2A](#) [W3A41A151KAT2A](#) [W3A45A220KAT2A](#) [W2A4YA181KAT2A](#) [W3A45C331KAT2A](#)
[W2A2YA101KAT2A](#) [W2A2ZC103MAT2A](#) [W2A2ZC473MAT2A](#) [W2A21A101KAT2A](#) [W2A23A101KAT2A](#)
[W2A23C103MAT2A](#) [W2A25A101KAT2A](#) [W2A25C103MAT2A](#) [W2A4YA100KAT2A](#) [W2A4YA101JAT2A](#)
[W2A4YA101KAT2A](#) [W2A4YA120KAT2A](#) [W2A4YA150KAT2A](#) [W2A4YA180KAT2A](#) [W2A4YA201KAT2F](#)
[W2A4YA220KAT2A](#) [W2A4YA221KAT2A](#) [W2A4YA270KAT2A](#) [W2A4YA330KAT2A](#) [W2A4YA330KAT4A](#)
[W2A4YA680KAT2A](#) [W2A4YC102MAT2A](#) [W2A4YC103MAT2F](#) [W2A4YC103M4T2A](#) [W2A4YC152KAT2A](#)
[W2A4YC183KAT2F](#) [W2A4YC222MAT2F](#) [W2A4YC331KAT2A](#) [W2A4YC332KAT2A](#) [W2A4YC471KAT2A](#)
[W2A4YC471KAT2F](#) [W2A4YC471MAT2A](#) [W2A4YC472MAT2A](#) [W2A4YC681KAT2A](#) [W2A4YC682KAT2A](#)
[W2A4YD104MAT2A](#) [W2A4ZA270KAT2A](#) [W2A4ZA470KAT2A](#) [W2A4ZC183KAT2F](#) [W2A4ZC332KAT2A](#)
[W2A4ZC471KAT2A](#) [W2A4ZC682KAT2A](#) [W2A41A100KAT2A](#) [W2A41A120KAT2A](#) [W2A41A150KAT2A](#)