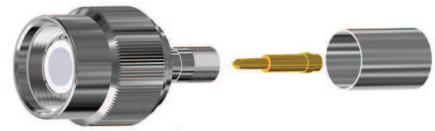
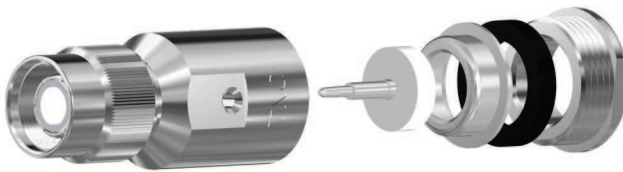
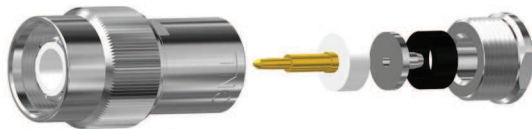
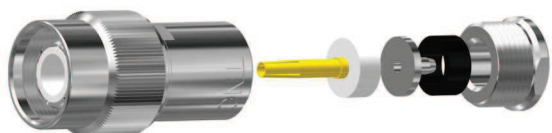


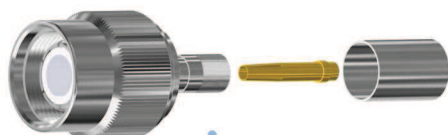
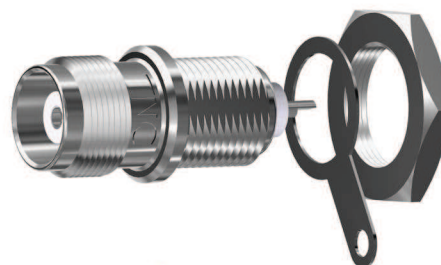
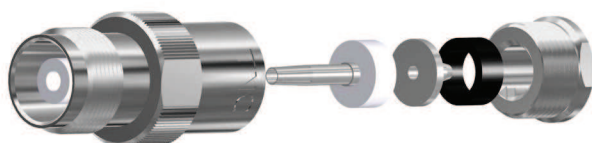
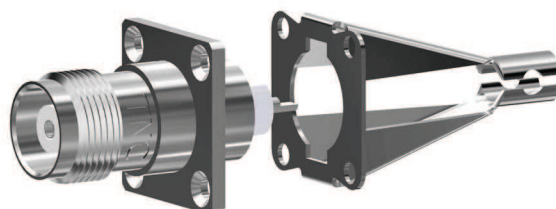
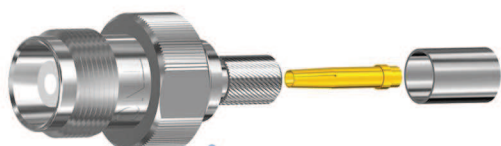
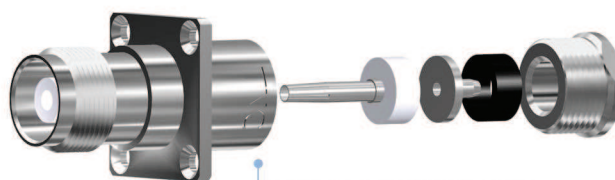
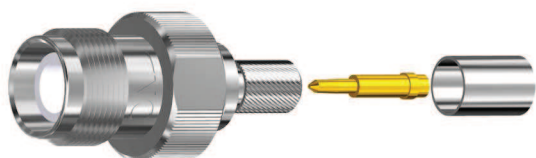

TNC-50/W1.02

TNC-50/W10.01

TNC-50/W2.04

TNC-50/NWN1.02

TNC-50/W2.06
TNC-50/W2.07

TNC-50/WW1.02

Symbol TNC	Nr katalogowy	Przewód	Korpus	Pin	Izolator	Uwagi	Impedancja
TNC-50/W1.02	303 001 014	RG58	Niklowany	Złocony	Noryl		50 Ω
TNC-50/W2.04	303 002 034	RG255		Srebrzony			
TNC-50/W2.06	303 002 016	RG58		Złocony	Teflon		
TNC-50/W2.07	303 002 017	H155					
TNC-50/W10.01	303 010 001	RG58					
TNC-50/NWN1.02	303 084 013	-					
TNC-50/WW1.02	303 081 013	-					


TNC-50-R/W11.01

TNC-50/NN1.02

TNC-50-R/W12.01
TNC-50-R/W13.01

TNC-50/G1.02

TNC-50/N2.02

TNC-50/G2.03

TNC-50/N10.01

TNC-50/G3.02

TNC-50-R/N13.01
TNC-50-R/N14.01

Symbol TNC	Nr katalogowy	Przewód	Korpus	Pin	Izolator	Otwór montażowy- typ	Impedancja	
TNC-50-R/W11.01	303 011 001	H155	Niklowany	Złocony	Teflon	-	50 Ω	
TNC-50-R/W12.01	303 012 001							
TNC-50-R/W13.01	303 013 001							
TNC-50/N2.02	303 042 002	RG58		Srebrzony				
TNC-50/N10.01	303 010 001			Złocony				
TNC-50-R/N13.01	303 050 001							
TNC-50-R/N14.01	303 051 001	H155						
TNC-50/NN1.02	303 082 013	-				Noryl		C
TNC-50/G1.02	303 061 020	RG58			Srebrzony	Teflon		A
TNC-50/G2.03	303 062 030							
TNC-50/G3.02	303 062 020							A