

**Table A - Electrical Ratings and Switch Approvals**

		1			2			3		
Pressure switches		6731-10			6731-06			6731-03		
Average Life Expectancy	Mechanical	1.0 x 10 <sup>6</sup>			2 x 10 <sup>6</sup>			2 x 10 <sup>6</sup>		
	Electrical	200K @ 10A		10K @ 21A	200K @ 6A		50K @ 10A	200K @ 1A		
		Max. Electrical Load			Max. Electrical Load			Max. Electrical Load		
		Res.	Ind.	(Pf0.75) Motor	Res.	Ind.	(Pf0.75) Motor	Res.	Ind.	
AC	125V	21A	15A	1HP	10A	10A	0.5HP	3A	1A	
	250V	21A	15A	2HP	10A	10A	0.5HP	3A	1A	
DC	6V	21A	21A		10A	10A		3A	1A	
	12V	15A	15A		5A	3A		3A	1A	
	24V	8A	7A		5A	3A		1A	0.5A	
	60V	1A	0.5A		1A	0.5A		1A	0.5A	
	110V	0.5A	0.2A		0.5A	0.2A		0.5A	0.2A	
	220V	0.25A	0.1A		0.25A	0.1A		0.25A	0.1A	
Approvals Available		V.D.E. U.L. B.E.A.B. Approved to BS 3955 part III			C.E.E. U.L. B.E.A.B. Approved to BS 3955 Part III			V.D.E. U.L.		C.E.E. C.S.A.

**Notes:-**

**1. Dry Switching**

If switching low power circuits, low current (4 to 100 milliamperes) and low voltage (below 30V), consult Herga for special switches

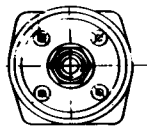
**NB**

Herga do not accept liability for any pressure operated device used outside the pressure range specified by the company.

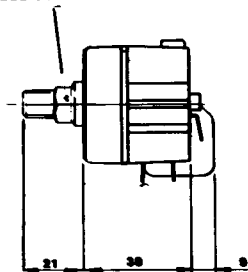
For quantity orders, special options are available.

- UL listed versions available.
- Double pole switching all ranges except -03.
- Switches set to specific operating pressure, rising or falling.
- Diaphragms in silicon rubber, nitrile, EPDM.
- Switches with wide or close differentials.
- Springs in stainless steel.
- Non standard pressure tube connections.

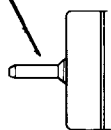
4 FIXING HOLES 4.5mm DEEP  
TO SUIT No. 4 SELF TAP SCREWS  
ON 29.6 PCD.



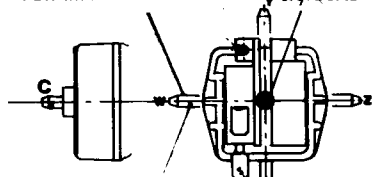
1/8 BSPT BRASS/STAINLESS  
STEEL CONNECTOR



6.4mm DD  
TUBE CONNECTION



NON STANDARD TUBE  
CONNECTION POSITIONS  
FOR 4mm ID CONNECTION



NON STANDARD TUBE  
CONNECTION POSITIONS  
(BACK ENTRY)

6.4 PUSH-ON TABS

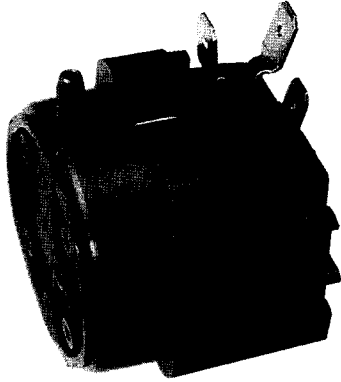
**Table B - Suitability for use with different operating media**

Pressure/Vacuum Medium	6731
Acetone	S
Ammonia (Liquid)	S
Amyl Alcohol to 20°C	S
Automotive Brake Fluid	S
Beer	S
Butane	R
Carbon Dioxide - Dry	R
Citric Acid	R
Copper Sulphate (Sol.)	S
Compressed Air	R
Cutting Oil	R
Diesel Oil	R
Detergent Solution	R
Fuel Oil	R
Glycol	R
Hydraulic Oil	R
Hydrogen	R
Lubricating Oil	R
Milk	S
Mineral Oil	R
Natural Gas	R
Oxygen to 70°C	R
Petrol	R
Plating Solution (Chrome)	S
Salt Water	S
Sewage	R
Turpentine	R
Vinegar	S
Water	R

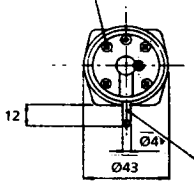
R - Recommended S - Suitable with Modification

# herga

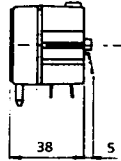
## Model 6731



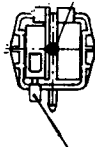
5 FIXING HOLES 4.5mm DEEP  
TO SUIT No. 4 SELF TAP SCREWS  
ON 28-5 PCD



PRESSURE TUBE  
CONNECTOR



PRESSURE SET  
ADJUSTER SCREW

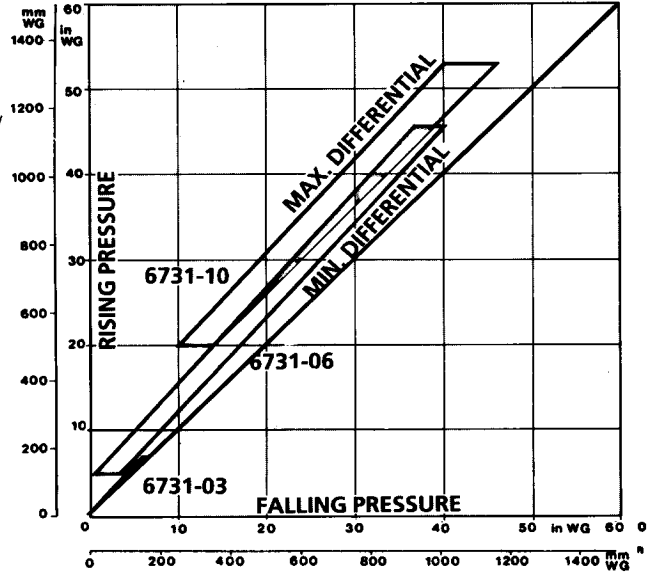


6-4 PUSH-ON TABS

Model No.	Pressure Range - on increasing pressure		Differential (fixed)
	inches water	mm water	
6731-03	1.5 - 7	40 - 180	see Chart 1
6731-06	5 - 25	127 - 635	see Chart 1
6731-10	20 - 55	510 - 1400	see Chart 1

## low pressure switches product 6731

Chart 1



Model No.	6731-03	6731-06	6731-10
Electrical Data Switch	Single Pole Double Throw	Single Pole Double Throw	Single Pole Double Throw
Contact Rating	3(1)A 250v A.C.	10(3)A 250v A.C.	21(8)A 250v A.C.
Full data	Table A column 3	Table A column 2	Table A column 1
Pressure Connection	Side entry spout 4mm (.15") OD	Side entry spout 4mm (.15") OD	Side entry spout 4mm (.15") OD
Setting Accuracy*	± 10%	± 10%	± 10%
Withstand Pressure	25 psi	25 psi	25 psi
Operating Media	Table B	Table B	Table B
Body Material	Nylon 12	Nylon 12	Nylon 12
Diaphragm	Neoprene	Neoprene	Neoprene
Spring	Spring Steel	Spring Steel	Spring Steel
Weight	50 gm	50 gm	50 gm

\*When set by Herga