



range introduction

Commando offers a comprehensive range of industrial plugs, connectors, socket outlets, appliance inlets, Combi and Modular-Combi units.

The Commando range is designed to meet all relevant European and British Standards, whilst offering an excellent choice of ingress protected ratings. The Commando range offers remarkable impact strength by way of its PBT (Polybutylene Terephthalate) or Nylon (Polyamide PA) insulated or aluminium housing*. Outstanding temperature performance and good resistance to most chemicals make it ideal for the most arduous applications. Contact pins and sleeves are of solid brass with stainless steel springs to keep contacts free of dirt and to ensure constant contact pressure.

features and benefits

Reliability

Features like the calibrated contact sleeves with stainless steel springs, brass screws in brass contacts, and the double earthing screws – all mean that this plug or socket will perform better and longer in difficult conditions

Ergonomic design

All edges and corners are rounded to remove sharp edges. Cable protection is improved. New design offers a better and more comfortable grip for connection / disconnection

Cable protection

The unified seal and cable protector forms a convex dome that prevents the plug from fastening on objects or collecting debris when dragged

Easy wiring

All screws are backed out and retained. Contact carrier marked front and back for easy and correct wiring. Hinged cable clamp and twin contact earth screws

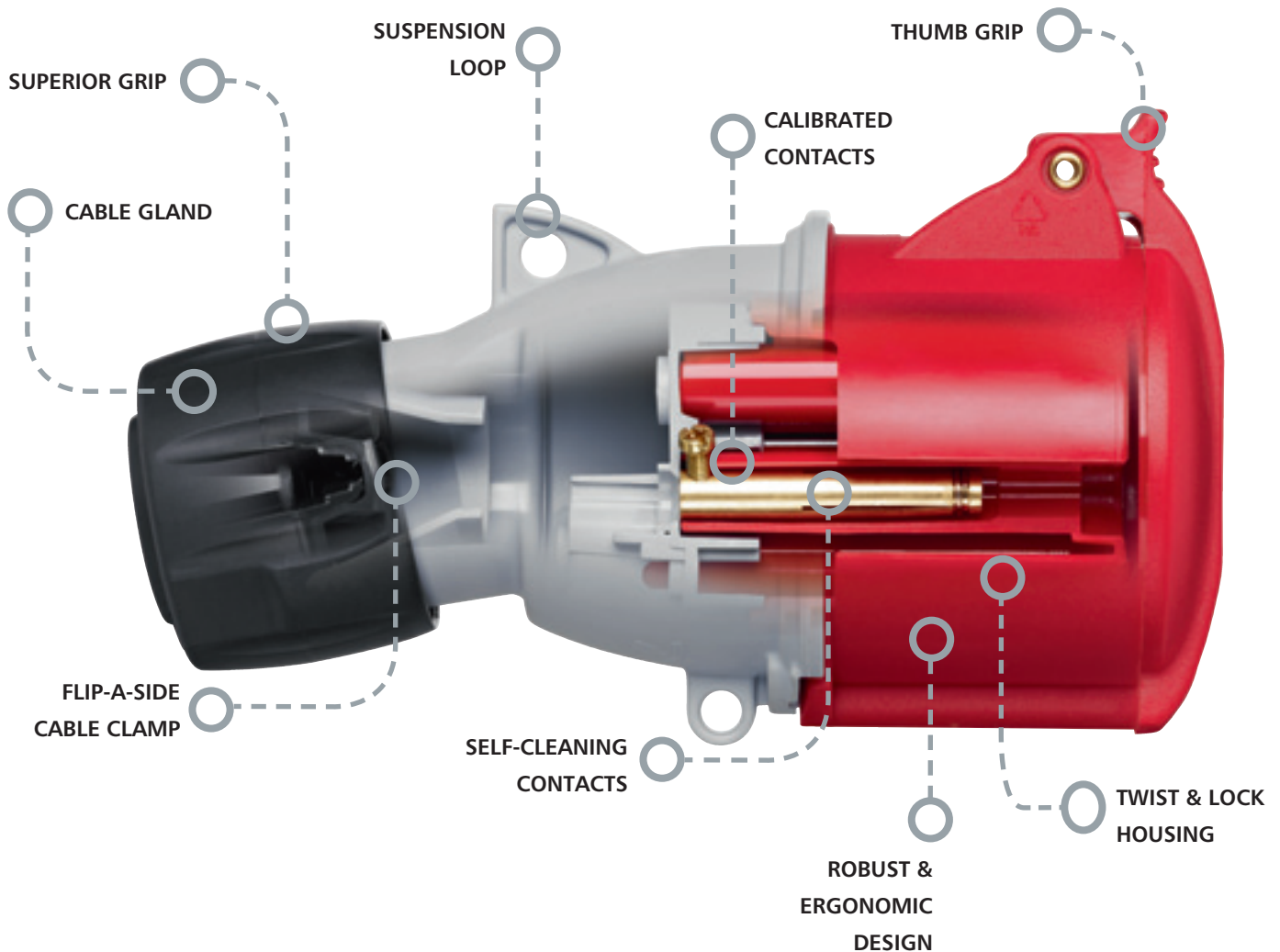
Outstanding Temperature Performance

Successful operation guaranteed between -25°C and 55°C

* 16A and 32A IP44 plug, connector and socket outlet products have housings manufactured from PA

technical hotline +44 (0)1268 563720

ingress protected | wiring devices



- **High Quality Materials**

The Commando range offers remarkable impact strength

Outstanding temperature performance and good resistance to chemicals make it ideal for the arduous applications

- **Connection Seal**

Prevent accidental disconnection or theft of equipment

- **Tight and Secure**

The cable gland has an improved locking mechanism that will apply pressure to the cable for the lifetime of the product.

- **Prolonged Earth Connection**

The earth connection is specifically designed, so that in the unlikely event of failure of the cable gland and the wires detach from the terminals the earth terminal will be the last to disconnect.

For extra protection the earth terminal is provided with 2 connection screws

- **Suspension Loop**

Products can be suspended above the floor, helping to keep the workspace in order.

- **Quick and Easy to use**

- **Clear markings and terminal identification**

- **Clear instructions for cable strip length, tightening torque and opening of the product.**

**IP44
SPLASHPROOF
100 - 130V
50 - 60 Hz**

Plugs

Connectors

Socket Outlets

ANGLED

STRAIGHT

SURFACE

SURFACE – LOOP IN

PANEL MOUNTING



Amps Pin. Earth Hour Pos

Amps	Pin. Configuration	Earth Hour Pos	Plugs	Connectors	Socket Outlets (Angled Surface)	Socket Outlets (Surface Loop In)	Socket Outlets (Panel Mounting)
16	2P+E	4	K9000YEL	K9100YEL	K9200YEL	K13200YEL	K9400YEL
16	3P+E	4	K9005YEL	K9105YEL	K9205YEL		K9405YEL
16	3P+N+E	4	K9013YEL	K9113YEL	K9213YEL		K9413YEL
32	2P+E	4	K9032YEL	K9132YEL	K9232YEL	K13232YEL	K9432YEL
32	3P+E	4		K9135YEL	K9235YEL		
32	3P+N+E	4	K9043YEL	K9142YEL	K9239YEL		

Fitted with cable entry gland.
BS EN 60309

Fitted with cable entry gland.
BS EN 60309

16A Top conduit (M20) or rear cable entry, complete with blanking plug.
32A Top conduit (M25) or rear cable entry, complete with blanking plug.
BS EN 60309

Suitable for top entry 2 x Ø25.
Fitted with terminals for Loop In 2 x 10mm².
BS EN 60309

All flanges have the same fixing centres and outside dimensions to assist panel builders.
Minimised flange option available (see page 258).
BS EN 60309

**IP67
WATERTIGHT
100 - 130V
50 - 60 Hz**

Plugs

Connectors

Socket Outlets

ANGLED

STRAIGHT

SURFACE

SURFACE – LOOP IN

PANEL MOUNTING



Amps Pin. Earth Hour Pos

Amps	Pin. Configuration	Earth Hour Pos	Plugs	Connectors	Socket Outlets (Angled Surface)	Socket Outlets (Surface Loop In)	Socket Outlets (Panel Mounting)
16	2P+E	4	K9023YEL	K9123YEL	K9193YEL	K13023YEL	K9802YEL
32	2P+E	4	K9053YEL	K9155YEL	K9761YEL	K13053YEL	K9865YEL
63	2P+E	4	K9294YEL	K9855YEL			

Suitable for flexible cable only.
63A:with external clamp.
BS EN 60309

Suitable for flexible cable only.
63A:with external clamp.
BS EN 60309

Suitable for top entry 2 x Ø25 or bottom entry 2 x Ø20.
Will accept FL13 flange at top.
BS EN 60309

Suitable for top entry 2 x Ø25
BS EN 60309

All flanges have the same fixing centres and outside dimensions to assist panel builders.
BS EN 60309

**IP44
SPLASHPROOF
100 - 130V
50 - 60 Hz
16 Amps
2P+E**

Socket Outlets

TWIN

SURFACE

Prewired

Unwired

K13143YEL

K13043YEL



Suitable for top entry 2 x Ø25 2 x Ø38
Bottom entry 3 x 47.5mm
BS EN 60309

63A plugs and inlets include pilot pins.

63A connectors and sockets with pilot sleeves are available to special order.

All products are available in minimum order quantity of one except K9000 and K9100 (which have a minimum order quantity of 10).

Photographs feature the most representative products.
Design changes may occur (over different current ratings) from one product to another.

technical hotline +44 (0)1268 563720

ingress protected | wiring devices

Socket Outlets ANGLED

PANEL MOUNTING



K9767YEL

K9769YEL

16/32A new range has different fixing centres to old range.
Old range is available for limited period. See technical section for details.
BS EN 60309

Switchsocket Outlets

ANGLED
INTERLOCKED
SURFACE



K9600YEL
K9606YEL

K9632YEL
K9638YEL

Switch can be locked in open or closed position.
BS EN 60309
Aluminium Enclosure

SURFACE



K13600YEL

K13632YEL

Suitable for top entry 2 x Ø25.
Switch can be locked in open position. Or closed position by removing the tab.
BS EN 60309

SURFACE



K9609YEL

K9642YEL

With 25mm knockout at top.
Will also accept FL13 flange (top).
Bottom entry M25.
BS EN 60309

Appliance Inlets

ANGLED
SURFACE



K9700YEL

K9732YEL

16A Top conduit (M20) or rear cable entry, complete with blanking plug.
32A Top conduit (M25) or rear cable entry, complete with blanking plug.
BS EN 60309

Switchsocket Outlets

ANGLED
INTERLOCKED
SURFACE



K9356YEL

With 32mm knockouts top and bottom.
Will also accept FL13 flange (top).
Switch can be locked in open position. In closed position by removing the tab.
BS EN 60309

Switchsocket Outlets

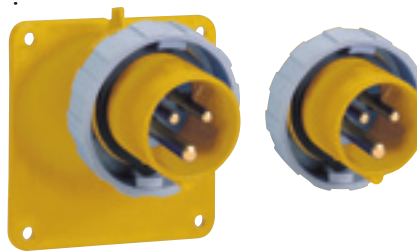
SURFACE



K13623YEL
K13653YEL

Suitable for top entry 2 x Ø25.
Switch can be locked in open position. In closed position by removing the tab.
BS EN 60309

Appliance Inlet Panels



K9780YEL
K9784YEL

BS EN 60309

K9788YEL

BS EN 60309

See page 258 for details of spare or alternative FL type flanges.

**IP44
SPLASHPROOF
200 - 250V
50 - 60 Hz**

Plugs



Connectors



Socket Outlets ANGLED

SURFACE



SURFACE-LOOP IN



**STRAIGHT
PANEL
MOUNTING**



Amps Pin. Earth Hour Config-ur Pos

16	2P+E	6	K9001BLU	K9101BLU	K9201BLU	K13201BLU	K9401BLU
16	3P+E	9	K9006BLU	K9106BLU	K9206BLU		K9406BLU
16	3P+N+E	9	K9014BLU	K9114BLU	K9214BLU		K9414BLU
32	2P+E	6	K9033BLU	K9133BLU	K9233BLU	K13233BLU	K9433BLU
32	3P+E	9	K9036BLU	K9136BLU	K9236BLU		
32	3P+N+E	9	K9044BLU	K9143BLU	K9240BLU		K9444BLU
63	2P+E	6	K9063BLU	K9172BLU	K9274BLU		K9472BLU
63	3P+E	9	K9065BLU	K9164BLU	K9264BLU		

16A/32A Fitted with cable entry gland.

63A Fitted with cable entry gland.

Thread size M48.

BS EN 60309

16A/32A Fitted with cable entry gland.

63A Fitted with cable entry gland.

Thread size M48.

BS EN 60309

16A Top conduit (M20) or rear cable entry, complete with blanking plug.

32A Top conduit (M25) or rear cable entry, complete with blanking plug.

63A Top conduit (M32) or rear cable entry, complete with blanking plug.

BS EN 60309

Suitable for top entry 2 x Ø25.

Fitted with terminals for Loop In 2 x 10mm².

BS EN 60309

16/32A All flanges have the same fixing centres and outside dimensions to assist panel builders.

Minimised flange option available (see page 258).

BS EN 60309

**IP67
WATERTIGHT
200 - 250V
50 - 60 Hz**

Plugs



Connectors



Socket Outlets ANGLED

SURFACE



SURFACE - LOOP IN



STRAIGHT

PANEL MOUNTING



Amps Pin. Earth Hour Config-ur Pos

16	2P+E	6	K9024BLU	K9124BLU	K9194BLU	K13024BLU	
32	2P+E	6	K9054BLU	K9156BLU	K9762BLU	K13054BLU	
63	2P+E	6	K9298BLU	K9856BLU	K9857BLU		K9828BLU
63	3P+E	9					
125	2P+E	6	K9099BLU	K9189BLU		K9190BLU	K9483BLU

Suitable for flexible cable only 63A and 125A. With external clamp.

BS EN 60309

Suitable for flexible cable only 63A and 125A. With external clamp.

BS EN 60309

Suitable for top entry 2 x Ø25 or bottom entry 2 x Ø20.

Will accept FL13 flange at top.

BS EN 60309

16/32A Suitable for top entry 2 x Ø25

125A 2 x 23/47mm knockouts top and bottom.

BS EN 60309

**IP44
SPLASHPROOF
200 - 250V
50 - 60 Hz
16 Amps
2P + E**

Socket Outlets ANGLED TWIN

SURFACE

Prewired Unwired

K13144BLU K13044BLU



Suitable for top entry 2 x Ø25 / 2 x Ø38
Bottom entry 3 x 47.5mm

BS EN 60309

63/125A plugs and inlets include pilot pins.

63A connectors and sockets with pilot sleeves are available to special order.

125A Switchsocket interlocked outlets with pilot sleeves are available to special order.

All products are available in minimum order quantity of one except K9001 and K9101 which have minimum order quantities of 10.

Photographs feature the most representative products.

Design changes may occur (over different current ratings) from one product to another.

technical hotline +44 (0)1268 563720

ingress protected | wiring devices

Socket Outlets

ANGLED
PANEL
MOUNTING



Switchsocket Outlets

ANGLED
INTERLOCKED
SURFACE



SURFACE



SURFACE



Appliance Inlets

ANGLED
SURFACE



K9771BLU
K9772BLU
K9773BLU
K9774BLU

K9601BLU
K9607BLU
K9633BLU
K9639BLU

K13601BLU
K13633BLU

K9610BLU
K9643BLU
K9306BLU
K9311BLU

K9701BLU
K9710BLU
K9733BLU
K9740BLU
K9775BLU

16/32A new range has different fixing centres to old range.
Old range is available for limited period. See technical section for details.
BS EN 60309

Switch can be locked in open or closed position
BS EN 60309
Aluminium Enclosure

Suitable for top entry 2 x Ø25.
Switch can be locked in open position. Or closed position by removing the tab.
BS EN 60309

16/32A With 25mm knockout at top.
Will also accept FL13 flange (top).
Bottom entry M25.
BS EN 60309

16A Top conduit (M20) or rear cable entry, complete with blanking plug.
32A Top conduit (M25) or rear cable entry, complete with blanking plug.
63A Top conduit (M32) or rear cable entry, complete with blanking plug.
BS EN 60309

Socket Outlets

ANGLED
PANEL MOUNTING



Switchsocket Outlets

ANGLED
INTERLOCKED
SURFACE

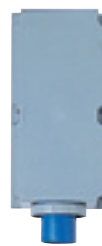


SURFACE



Appliance Inlets

ANGLED
SURFACE



SURFACE



Appliance Inlet Panels



K9803BLU
K9866BLU
K9825BLU

K13624BLU
K13654BLU
K9688BLU

K9324BLU
K9369BLU
K9355BLU

K9883BLU

K9826BLU

K9781BLU
K9785BLU
K9789BLU*
K9792BLU*

16/32A All flanges have the same fixing centres and outside dimensions to assist panel builders.
BS EN 60309

16/32A Suitable for top entry 2 x Ø25.
125A 2 x 23/47mm knockouts top and bottom.
Switch can be locked in open position. In closed position by removing the tab.
BS EN 60309

16/32A With 29mm knockout at top Will also accept FL13 flange (top).
Bottom entry M25.
63A With 32mm knockouts top and bottom.
Will accept FL13 flange top and bottom.
BS EN 60309

2 x 23/47mm knockouts top and bottom.
BS EN 60309

Will accept FL13 flanges top and bottom.
BS EN 60309

*Note: 63 and 125A versions do not include a flange (See page 247 for photograph).
BS EN 60309

**IP44
SPLASHPROOF
380 - 415V
50 - 60 Hz**

Plugs



Connectors



Socket Outlets

ANGLED

SURFACE



SURFACE – LOOP IN



STRAIGHT

PANEL MOUNTING



Amps Pin.
Config-
uration Earth
Hour
Pos

16	2P+E	9	K9002RED	K9102RED	K9202RED		
16	3P+E	6	K9007RED	K9107RED	K9207RED	K13207RED	K9407RED
16	3P+N+E	6	K9015RED	K9115RED	K9215RED	K13215RED	K9415RED
32	3P+E	6	K9037RED	K9137RED	K9237RED	K13237RED	K9437RED
32	3P+N+E	6	K9045RED	K9144RED	K9241RED	K13241RED	K9445RED
63	3P+E	6	K9066RED	K9165RED	K9265RED		K9465RED
63	3P+N+E	6	K9071RED	K9170RED	K9269RED		K9470RED

16A/32A Fitted with cable entry gland.

63A Fitted with cable entry gland.

Thread size M48.

16A/32A Fitted with cable entry gland.

63A Fitted with cable entry gland.

Thread size M48.

16A Top conduit (M20) or rear cable entry, complete with blanking plug.

32A Top conduit (M25) or rear cable entry, complete with blanking plug.

63A Top conduit (M32) or rear cable entry, complete with blanking plug.

Suitable for top entry 2 x Ø25.

Fitted with terminals for Loop In 2 x 10mm².

16/32A All flanges have the same fixing centres and outside dimensions to assist panel builders.

Minimised flange option available (see page 258).

**IP67
WATERTIGHT
380 - 415V
50 - 60 Hz**

Plugs



Connectors



Socket Outlets

ANGLED

SURFACE

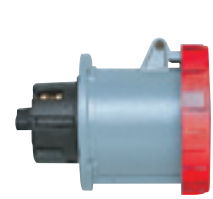


SURFACE – LOOP IN



STRAIGHT

PANEL MOUNTING



Amps Pin.
Config-
uration Earth
Hour
Pos

16	3P+E	6	K9025RED	K9125RED	K9763RED	K13025RED	
16	3P+N+E	6	K9026RED	K9126RED	K9764RED	K13026RED	
32	3P+E	6	K9055RED	K9157RED	K9765RED	K13055RED	
32	3P+N+E	6	K9056RED	K9158RED	K9766RED	K13056RED	
63	3P+E	6	K9282RED	K9842RED	K9858RED		K9812RED
63	3P+N+E	6	K9292RED	K9852RED	K9859RED		K9822RED
125	3P+E	6	K9092RED	K9182RED		K9191RED	K9481RED
125	3P+N+E	6	K9097RED	K9187RED		K9192RED	K9482RED

Suitable for flexible cable only. 63A and 125A have external clamp.

Suitable for flexible cable only. 63A and 125A have external clamp.

2 x 29/37mm knockouts (top), 1 x Ø29 and 1 x Ø23 knockout (bottom).

Will accept FL13 flanges top and bottom.

16/32A Fitted with terminals for Loop In. Suitable for top entry 2 x Ø25.

125A Fitted with terminals for Loop In. 2 x 23/47mm knockouts top and bottom for looping 2 x 10mm².

63/125A plugs and inlets include pilot pins.

63A connectors and sockets with pilot sleeves are available to special order.

125A Switchsocket interlocked outlets include pilot sleeves are available to special order.

All products are available in minimum order quantity of one.

Photographs feature the most representative products.

Design changes may occur (over different current ratings) from one product to another.

technical hotline +44 (0)1268 563720

ingress protected | wiring devices

Socket Outlets

ANGLED

PANEL MOUNTING



Switchsocket Outlets

ANGLED
INTERLOCKED
SURFACE



SURFACE



SURFACE



Appliance Inlets

ANGLED
SURFACE



K9777RED

K9778RED

K9779RED

K9751RED

K9752RED

K9565RED

K9570RED

K9602RED

K9608RED

K9634RED

K9640RED

K9665RED

K9670RED

K13607RED

K13615RED

K13637RED

K13641RED

K9611RED

K9612RED

K9644RED

K9645RED

K9312RED

K9322RED

K9706RED

K9711RED

K9736RED

K9741RED

K9768RED

16/32A new range has different fixing centres to old range.
Old range is available for limited period. See technical section for details.

Switch can be locked in open or closed position.
Aluminium Enclosure

Suitable for top entry 2 x Ø25.
Switch can be locked in open position. In closed position by removing the tab.

16/32A
With 25mm knockout at top. Will also accept FL13 flange top.
Bottom entry M25.

16A Top conduit (M20) or rear cable entry, complete with blanking plug.
32A Top conduit (M25) or rear cable entry, complete with blanking plug.
63A Top conduit (M32) or rear cable entry, complete with blanking plug.

Socket Outlets

ANGLED

PANEL MOUNTING



Switchsocket Outlets

ANGLED INTERLOCKED

SURFACE



SURFACE



Appliance Inlets

ANGLED

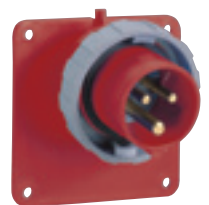
SURFACE



SURFACE



Appliance Inlet Panels



K9807RED

K9815RED

K9870RED

K9873RED

K9582RED

K9592RED

K9691RED

K13625RED

K13626RED

K13655RED

K13656RED

K9694RED

K9327RED

K9330RED

K9359RED

K9362RED

K9342RED

K9352RED

K9884RED

K9829RED

K9827RED

K9793RED*

K9782RED

K9783RED

K9786RED

K9787RED

K9790RED*

K9791RED*

16/32A All flanges have the same fixing centres and outside dimensions to assist panel builders.

16/32A Suitable for top entry 2 x Ø25.
125A 2 x 23/47mm knockouts top and bottom.
Switch can be locked in open position. In closed position by removing the tab.

16/32A With 29mm knockout at top will also accept FL13 flange at top. Bottom. Conduit entry M25.
63A With 32mm knockouts top and bottom. Will accept FL13 flange top and bottom.

2 x 23/47mm knockouts top and bottom.

1 x M40/M32
2 x M20 top
2 x M40/M32
1 x M20 bottom
Will accept FL13 flanges top and bottom.

*Note: 63 and 125A versions do not include a flange (See page 247 for photograph).

See page 258 for details of spare or alternative FL type flanges.

**IP44
SPLASHPROOF
440 - 460V
60 Hz**

**SUITABLE FOR
MARINE
INSTALLATIONS**

Amps	Pin. Config- uration	Earth Hour Pos
------	----------------------------	----------------------

16	3P+E	11
16	3P+N+E	11
32	3P+E	11
32	3P+N+E	11

Plugs



Fitted with cable entry gland.

Connectors



Fitted with cable entry gland.

Socket Outlet

**ANGLED
SURFACE**



16A Top conduit (M20) or rear cable entry, complete with blanking plug.
32A Top conduit (M25) or rear cable entry, complete with blanking plug.

**STRAIGHT
PANEL MOUNTING**



All flanges have the same fixing centres and outside dimensions to assist panel builders.
Minimised flange option available (see page 258).

**ANGLED
PANEL MOUNTING**



16/32A new range has different fixing centres to old range.

Old range is available for limited period. See technical section for details.

**IP44
SPLASHPROOF
440 - 460V
60 Hz**

**SUITABLE FOR
MARINE
INSTALLATIONS**

Amps	Pin. Config- uration	Earth Hour Pos
------	----------------------------	----------------------

16	3P+E	11
16	3P+N+E	11
32	3P+E	11
32	3P+N+E	11

Switchsocket

Outlets

**Interlocked
SURFACE**



Switch can be locked in open or closed position. Aluminium Enclosure.

**IP67
WATERTIGHT
440 - 460V
60 Hz**

**SUITABLE FOR
MARINE
INSTALLATIONS**

Amps	Pin. Config- uration	Earth Hour Pos
------	----------------------------	----------------------

63	3P+E	11
63	3P+N+E	11
125	3P+E	11

Plugs



Suitable for flexible cable only. With external clamp.

Connectors



Suitable for flexible cable only. With external clamp.

Socket Outlets

**ANGLED
SURFACE**



2 x 23/47mm knockouts top and bottom.

Switchsocket Outlets

ANGLED INTERLOCKED

SURFACE



2 x 23/47mm knockouts top and bottom.

SURFACE



With 32mm knockouts top and bottom.

63/125A plugs and inlets include pilot pins.
63A connectors and sockets with pilot sleeves are available to special order.
125A Switchsocket interlocked outlets with pilot sleeves are available to special order.

All products are available in minimum order quantity of one. Photographs feature the most representative products. Small design changes may occur (over different current ratings) from one product to another.

Switch can be locked in open position. In closed position by removing the tab.

Will accept FL13 flange top and bottom.

technical hotline +44 (0)1268 563720

ingress protected | wiring devices

**IP44
SPLASHPROOF
480 - 500V
50 - 60 Hz**

Plugs



Connectors



Socket Outlets

ANGLED
SURFACE



Amps	Pin. Configuration	Earth Hour Pos
16	3P+E	7
32	3P+E	7

16	3P+E	7	K9009BLK	K9109BLK	K9209BLK		
32	3P+E	7	K9039BLK	K9139BLK	K9238BLK		

Fitted with cable entry gland.

Fitted with cable entry gland.

16A Top conduit (M20) or rear cable entry, complete with blanking plug.

32A Top conduit (M25) or rear cable entry, complete with blanking plug.

**IP44
SPLASHPROOF
480 - 500V
50 - 60 Hz**

Switch Socket Outlets

ANGLED
INTERLOCKED
SURFACE



Appliance Inlets

ANGLED
SURFACE



Amps	Pin. Configuration	Earth Hour Pos
16	3P+E	7
32	3P+E	7

16	3P+E	7					
32	3P+E	7	K9636BLK	K9737BLK			

Switch can be locked in open or closed position.

Aluminium Enclosure

16A Top conduit (M20) or rear cable entry, complete with blanking plug.

32A Top conduit (M25) or rear cable entry, complete with blanking plug.

**IP67
WATERTIGHT
480 - 500V
50 - 60 Hz**

Plugs



Connectors



Switchsocket Outlets

ANGLED
INTERLOCKED
SURFACE



Amps	Pin. Configuration	Earth Hour Pos
63	3P+E	7

63	3P+E	7	K9284BLK	K9844BLK	K9344BLK		
----	------	---	-----------------	-----------------	-----------------	--	--

Suitable for flexible cable only. With external clamp

Suitable for flexible cable only. With external clamp

63A With 32mm knockouts top and bottom. Will accept FL13 flange top and bottom.

63/125A plugs and inlets include pilot pins. 63A connectors and sockets with pilot sleeves are available to special order. All products are available in a minimum order quantity of one. Design changes may occur (over different current ratings) from one product to another.

**IP44
SPLASHPROOF
>50V
100 - 300 Hz**

Plugs



Connectors



Socket Outlets ANGLED SURFACE



STRAIGHT PANEL MOUNTING



Amps Pin. Config-uration Earth Hour Pos

16	3P+E	10
----	------	----

K9010GRN

K9110GRN

K9210GRN

K9410GRN

Fitted with cable entry gland.

Fitted with cable entry gland.

Top conduit (M20) or rear cable entry, complete with blanking plug.

All flanges have the same fixing centres and outside dimensions to assist panel builders.

Minimised flange option available (see page 258).

**IP44
SPLASHPROOF
>50V
300 - 500 Hz**

Plugs



Connectors



Socket Outlets ANGLED SURFACE



STRAIGHT PANEL MOUNTING



Amps Pin. Config-uration Earth Hour Pos

16	3P+E	2
16	3P+N+E	2
32	3P+N+E	2

K9011GRN

K9111GRN

K9211GRN

K9417GRN

K9017GRN

K9117GRN

K9252GRN

K9417GRN

K9047GRN

K9146GRN

K9258GRN

K9447GRN

Fitted with cable entry gland.

Fitted with cable entry gland.

16A Top conduit (M20) or rear cable entry, complete with blanking plug.

32A Top conduit (M25) or rear cable entry, complete with blanking plug.

All flanges have the same fixing centres and outside dimensions to assist panel builders.

Minimised flange option available (see page 258).

**IP44
SPLASHPROOF
>50V
>300 - 500 Hz**

Switch Socket Outlets

ANGLED INTERLOCKED SURFACE



Amps Pin. Config-uration Earth Hour Pos

16	3P+E	2
----	------	---

K9605GRN

Switch can be locked in open or closed position. Aluminium Enclosure.

technical hotline +44 (0)1268 563720

ingress protected | wiring devices

**IP44
SPLASHPROOF
IS TRAN~
50 - 60 Hz**

Plugs

Connectors

Socket Outlets

ANGLED
SURFACE

STRAIGHT
PANEL MOUNTING

ANGLED
PANEL MOUNTING



Amps	Pin. Configuration	Earth Hour Pos
16	2P+E	12

Amps	Pin. Configuration	Earth Hour Pos
16	2P+E	12

K9004GRY

K9104GRY

K9204GRY

K9404GRY

K9756GRY

Fitted with cable entry gland.

Fitted with cable entry gland.

Top conduit (M20) or rear cable entry, complete with blanking plug.

All flanges have the same fixing centres and outside dimensions to assist panel builders. Minimised flange option available (see page 258).

16/32A new range has different fixing centres to old range. Old range is available for limited period. See technical section for details.

**IP44
SPLASHPROOF
>50 - 250V
d.c.**

Plugs

Connectors

Socket Outlets

ANGLED
SURFACE

STRAIGHT
PANEL MOUNTING



Amps	Pin. Configuration	Earth Hour Pos
16	2P+E	3

Amps	Pin. Configuration	Earth Hour Pos
16	2P+E	3

K9003GRY

K9103GRY

K9203GRY

K9403GRY

Fitted with cable entry gland.

Fitted with cable entry gland.

Top conduit (M20) or rear cable entry, complete with blanking plug.

All flanges have the same fixing centres and outside dimensions to assist panel builders. Minimised flange option available (see page 258).

All products are available in minimum order quantity of one.

Photographs feature the most representative products. Design changes may occur (over different current ratings) from one product to another.

**IP44
SPLASHPROOF
25V
50 - 60 Hz**

ELV RANGE

Amps Pin. Config-uration

Plugs



Connectors



**Socket Outlets
STRAIGHT
SURFACE**



**ANGLED
PANEL MOUNTING**



**Appliance Inlets
SURFACE**



16	2P		K9018VLT	K9118VLT	K9253VLT	K9518VLT	K9725VLT
16	3P		K9019VLT	K9119VLT	K9254VLT	K9519VLT	K9726VLT

**IP44
SPLASHPROOF
50V
50 - 60 Hz**

ELV RANGE

Amps Pin. Config-uration Minor Key Pos

Plugs



Connectors



**Socket Outlets
STRAIGHT
SURFACE**



**ANGLED
PANEL MOUNTING**



Top conduit or rear cable entry. Supplied with M25 blanking plug/cable entry.

Top conduit or rear cable entry. Supplied with M25 blanking plug/cable entry.

16	2P	12	K9020WHI	K9120WHI	K9255WHI	K9520WHI	
16	3P	12	K9021WHI	K9121WHI	K9256WHI	K9521WHI	

**IP44
SPLASHPROOF
25 & 50V
d.c.**

ELV RANGE

Amps Pin. Config-uration Minor Key Pos

Plugs



Connectors



**Socket Outlets
STRAIGHT
SURFACE**



**ANGLED
PANEL MOUNTING**



Top conduit or rear cable entry. Supplied with M25 x 1.5 blanking plug/cable entry.

16	2P	10	K9022WHI	K9122WHI	K9257WHI	K9522WHI	
----	----	----	-----------------	-----------------	-----------------	-----------------	--

All violet and white products on this page are made of Polyamide

Top conduit or rear cable entry. Supplied with M25 blanking plug/cable entry.

technical hotline +44 (0)1268 563720

ingress protected | wiring devices

110 - 130V
50 - 60 Hz

Three Way Adaptor

IP44 SPLASHPROOF



Amps	Pin. Configuration	Earth Hour Pos
16	2P+E	4

K9907YEL

Combi Blocks THREE WAY

IP44 SPLASHPROOF



13503

Rubber housing

TWO WAY

IP57 WATERTIGHT



13507

Rubber housing

TWO WAY 30mA RCD PROTECTED

IP44 SPLASHPROOF



13505

Rubber housing

200 - 250V
50 - 60 Hz

Three Way Adaptor

IP44 SPLASHPROOF



Amps	Pin. Configuration	Earth Hour Pos
16	2P+E	6

K9908BLU

PBT enclosure
One appliance inlet and three socket outlets

Combi Blocks THREE WAY

IP44 SPLASHPROOF



13504

Rubber housing

TWO WAY

IP57 WATERTIGHT



13508

Rubber housing

TWO WAY 30mA RCD PROTECTED

IP44 SPLASHPROOF



13506

Rubber housing

380 - 415V
50 - 60 Hz

Three Way Adaptor

IP44 SPLASHPROOF



Amps	Pin. Configuration	Earth Hour Pos
16	3P+E	6
16	3P+N+E	6

K9910RED

K9911RED

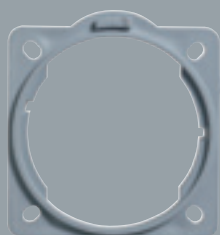
PBT enclosure
One appliance inlet and three socket outlets

Protective Covers For Inlets



9960BLK

Minimised and Alternate Flanges



K9996



K9981/2/3

Spare FL Type Flange Plates Gland Plates And Gaskets

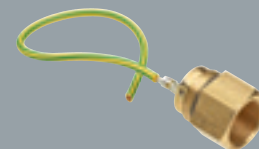


9953GRY

Earth Lead Adaptors And Blanking Plugs



9933



9936

9960BLK
FOR 2P+E, 16A

9965BLK
FOR ALL 125A (IP67)

9966BLK
2P+E, 3P+E, 32A

9967BLK
FOR ALL 63A (IP44)

1

Minimised:

1

K9996
FOR 2P+E, 16A

10

1

Alternate:

1

K9981
FOR 2P+E, 16A

10

K9982
FOR 3P+E, 3P+N+E, 16A

10

K9983
FOR 2P+E, 3P+E, 3P+N+E, 32A

10

SUITABLE FOR
IP44 PANEL SOCKET
STRAIGHT OUTLETS

9953GRY
GLAND PLATE
UNDRILLED FL13

1

SUITABLE FOR
COMMANDO UNITS AND
SAFETYSWITCHES

9933
M20 X 1.5/ M20 X 1.5 THREAD SIZE
USED ON ALL 16A SOCKET OUTLETS
AND APPLIANCE INLETS (EXCEPT
INTERLOCKED). ALSO USED ON
16A AND 25A SAFETYSWITCHES

1

9934
M25 x 1.5/ M25 x 1.5 THREAD SIZE
USED ON ALL 32A SOCKET OUTLETS AND
APPLIANCE INLETS (EXCEPT INTERLOCKED)

5

9936
PG21/ M25 X 1.5 THREAD SIZE
USED ON 16A & 32A INTERLOCKED
SWITCHSOCKET OUTLETS

5

9937
M32 X 1.5/ M32 X 1.5 THREAD SIZE
USED ON ALL 63A SOCKET OUTLETS AND
APPLIANCE INLETS

5

9937 must not be used on installations that are
rated above 63A

technical hotline +44 (0)1268 563720

ingress protected | wiring devices

Commando Industrial Plugs and Sockets



By referring to the chart below, it can be seen that there can be no interchangeability of products as the earth socket tube is placed in a different 'clock' position according to the voltage and frequency. This clock position is determined by looking into a socket-outlet from the front with the key-way at the bottom.

Unless otherwise stated all frequencies are 50-60Hz.

Pilot Contact

Commando accessories provided with pilot contacts, in accordance with IEC.60309: 1997 and BS EN.60309:1998 have pilot pins shorter than other pins in the unit. Connection to suitable control circuitry will provide electrical interlock as the pilot circuit will make last and break first relative to the mains supply.

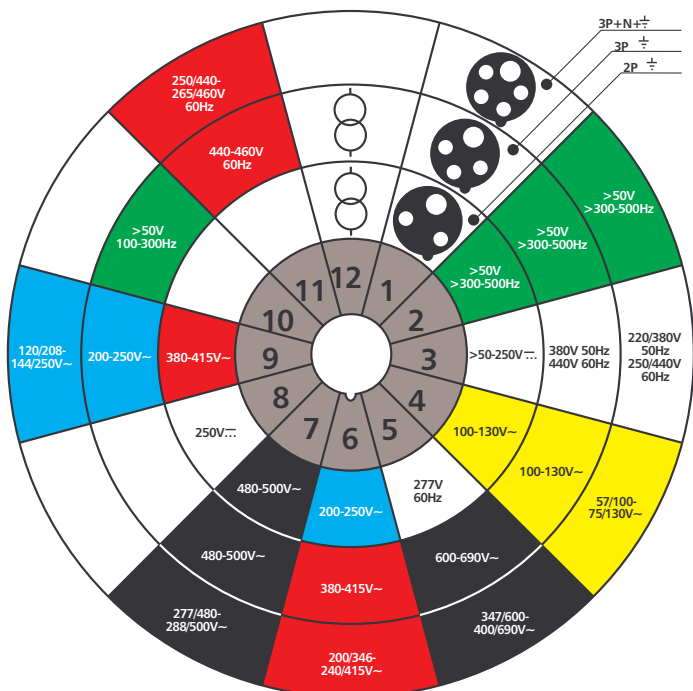
The pilot contact is positioned centrally in 3P +E and 3P+N+E accessories and diametrically opposite the earthing contact in 2P+E accessories.

Rating Code

The rating code which is found on the rating label of each accessory gives details of rated current, rated (operating) voltage (or range of voltages), rated frequency (if not 50/60Hz) and a symbol to indicate the position of the earth contact.

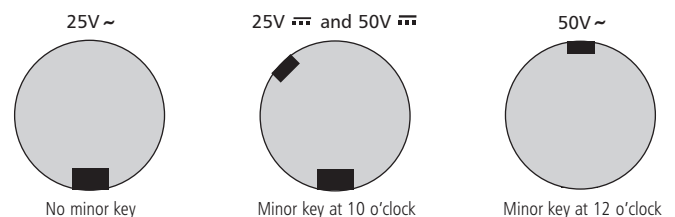
(i) For all products (except extra low voltage) the position given is that of the earth pin when a socket-outlet/connector is viewed from the front with the key-way at the bottom. When viewing a plug/ appliance inlet from the front with the key at the bottom, the position of the earth pin is reversed, i.e., a 10 o'clock will appear at 2 o'clock and other positions are relative.

(ii) For extra low voltage products (i.e., white and violet) the position given is that of the minor key when a socket-outlet is viewed from the front with the major key at the bottom. When viewing a plug/ appliance inlet from the front with the major key-way at the bottom, the position of the minor key-way is reversed, i.e., 10 o'clock will appear as 2 o'clock and other positions are relative.



Voltage	Colour code
25	Blue
50	White
100 - 130	Yellow
200 - 250	Light Blue
346 - 460	Red
500 - 750	Black
>50, 100 - 500Hz	Green

MAJOR AND MINOR KEY POSITIONS FOR ELV SOCKETS



Key for symbols

a.c.

d.c.

isolating transformer