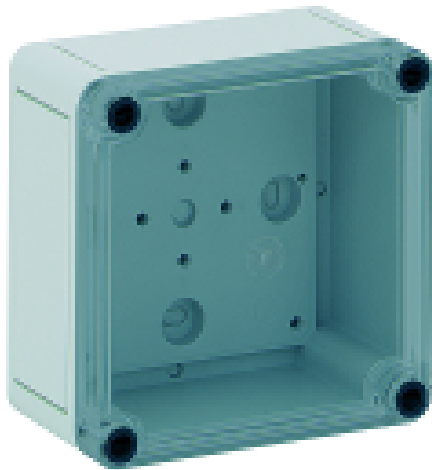


Product data sheet

TK PS 99-6-to



Empty enclosure, base: polystyrene, grey, similar to RAL 7035,
cover: polycarbonate, transparent
without knockouts

Article no. : 11100301

Technical Data:

Dimensions:

Width:	94 mm
Length:	94 mm
Height:	57 mm

Material:

Base:	Polystyrene, grey, similar to RAL 7035
Cover:	Polycarbonate, transparent
Sealing:	Polyurethane
Cover screw:	Polyamide 6, fiber-glass reinforced

Product data sheet

TK PS 99-6-to

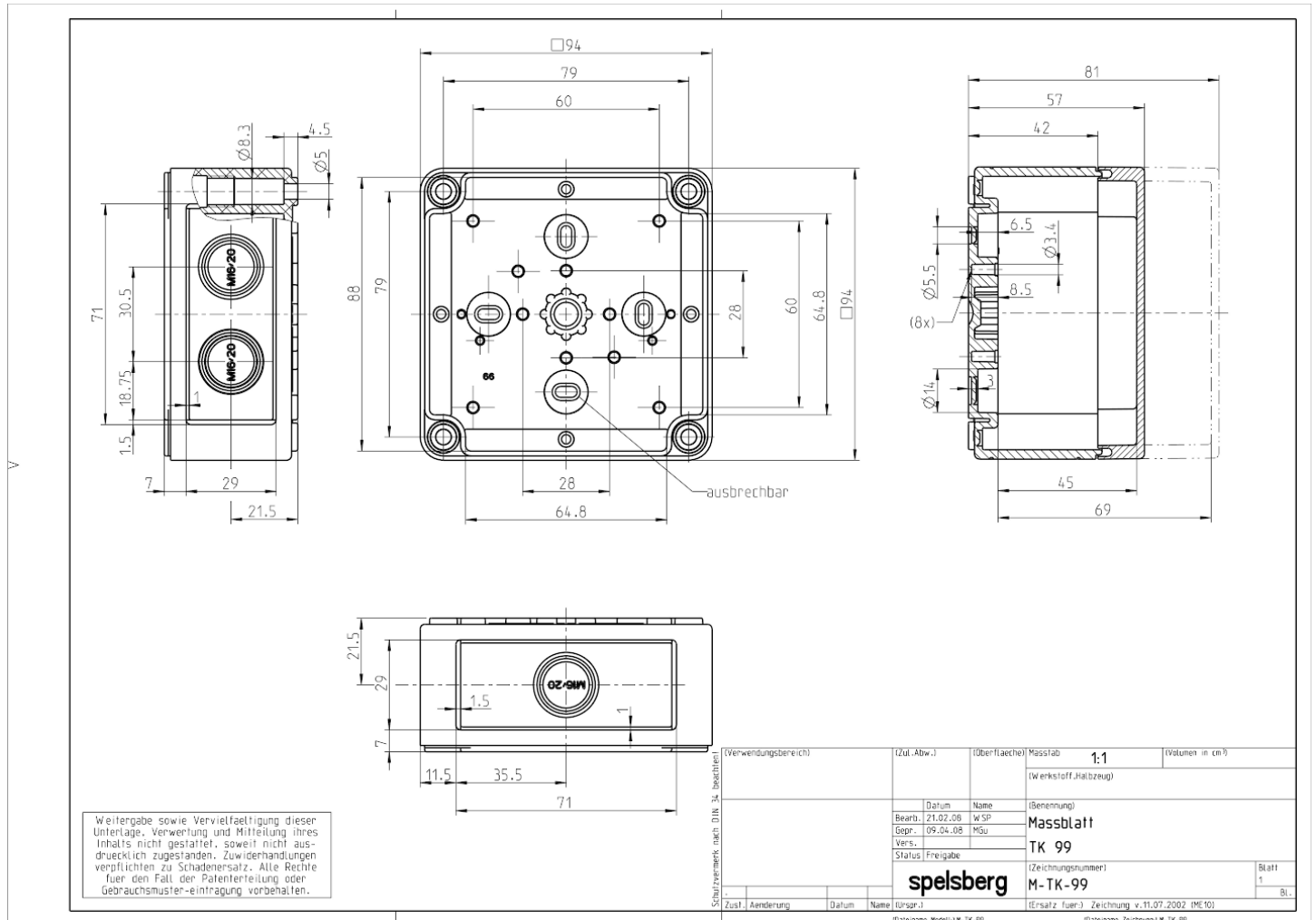
Properties:

Ingress protection:	IP66 - acc. EN 60529 / DIN VDE 0470-1
Ambient temperature (min.):	-25 °C
Ambient temperature (max.):	40 °C
Ambient temperature (24 h):	35 °C
Max. rel. humidity at 25° C:	50%
Max. rel. humidity at 40° C:	100%
Rated insulation voltage AC:	690V
Impact resistance:	IK07 acc. DIN EN 5012 / VDE 0470 Part 100
Protection class:	II - isolate protection acc. VDE 0106
Halogen-free:	√
Heavy metals-free:	√
PVC-free:	√
Silicone-free:	√
UV resistance:	-
Weatherproof:	-
Combustion behaviour to UL:	HB acc. UL94
Combustion behaviour to VDE:	650°C acc. VDE 0471/ EN 60695
Knockouts:	-

Product data sheet

TK PS 99-6-to

Drawing:



Manufacturer: Günther Spelsberg GmbH + Co. KG
 Im Gewerbepark 1
 58579 Schalksmühle
 T. +49 (0) 2355 / 892-0
 F. +49 (0) 2355 / 892-299
 www.spelsberg.de

All information is provided without warranty. We reserve the right to make improvements in the interest of technical progress.