

# Product data sheet

Specifications



## Female, M12, 4 pin, elbowed connector, cable gland Pg 7

XZCC12FCP42B

### Main

Range of product	Telemecanique Cabling components
Accessory / separate part category	Cabling accessories
Accessory / separate part type	Connector
Electrical connection	Elbowed female connector M12, 4 pins
Collar material	Plastic
Status LED	2 PNP LEDs
Cable connection	Screw terminal / wire size <math><0.75 \text{ mm}^2</math> / clamping capacity 3...6 mm

### Complementary

Cable gland type	Pg 7
Cable connector fixing	Screw-on
[Ue] rated operational voltage	10...30 V DC
[In] rated current	3 A
Enclosure material	Plastic
Minimum insulating resistance	1000 G $\Omega$
Contact resistance	8000 $\mu\text{Ohm}$
Net weight	0.02 kg

### Environment

IP degree of protection	IP67
Ambient air temperature for operation	-40...85 °C

### Packing Units

Unit Type of Package 1	PCE
Number of Units in Package 1	1
Package 1 Weight	28.0 g
Package 1 Height	3.2 cm
Package 1 width	10.1 cm
Package 1 Length	12.2 cm

Unit Type of Package 2	S02
Number of Units in Package 2	50
Package 2 Weight	1.812 kg
Package 2 Height	15 cm
Package 2 width	30 cm
Package 2 Length	40 cm

## Offer Sustainability

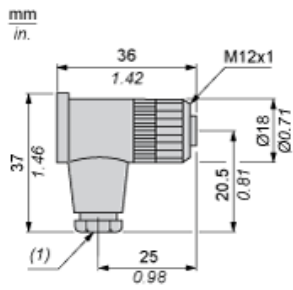
REACH Regulation	<a href="#">REACH Declaration</a>
EU RoHS Directive	Pro-active compliance (Product out of EU RoHS legal scope) <a href="#">EU RoHS Declaration</a>
Mercury free	Yes
RoHS exemption information	Yes
California proposition 65	WARNING: This product can expose you to chemicals including: Diisononyl phthalate (DINP), which is known to the State of California to cause cancer, and Di-isodecyl phthalate (DIDP), which is known to the State of California to cause birth defects or other reproductive harm. For more information go to <a href="http://www.P65Warnings.ca.gov">www.P65Warnings.ca.gov</a>

## Contractual warranty

Warranty	18 months
----------	-----------

Dimensions

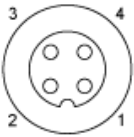
---



(1) Cable gland : no. 7 plastic (Pg 7)

**Connections and Schemes**

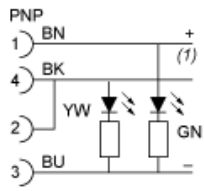
---



**Connections and Schemes**

---

**LED Connection**



- BN :** Brown
- BK :** Black
- BU :** Blue
- GN :** Green
- YW :** Yellow
- (1)** Signal