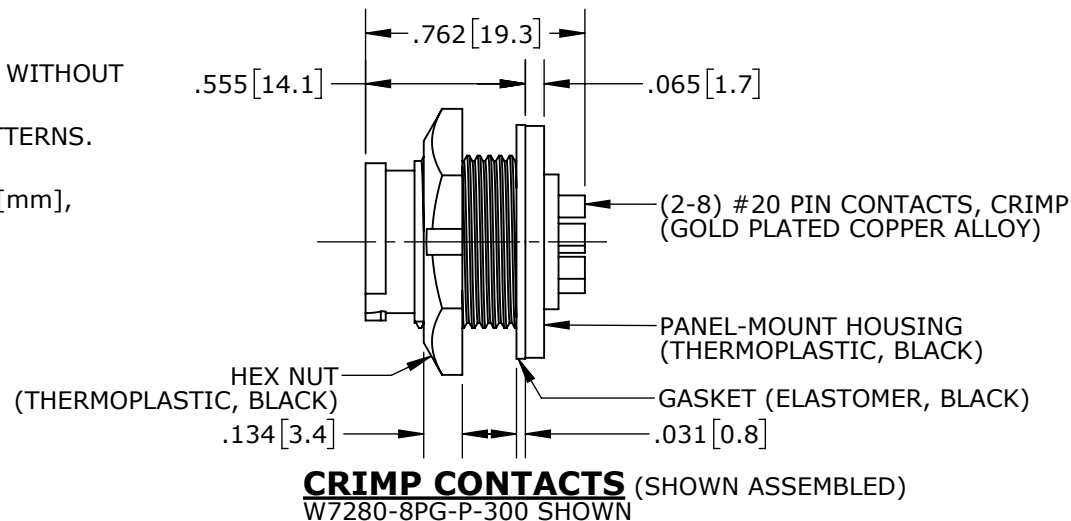


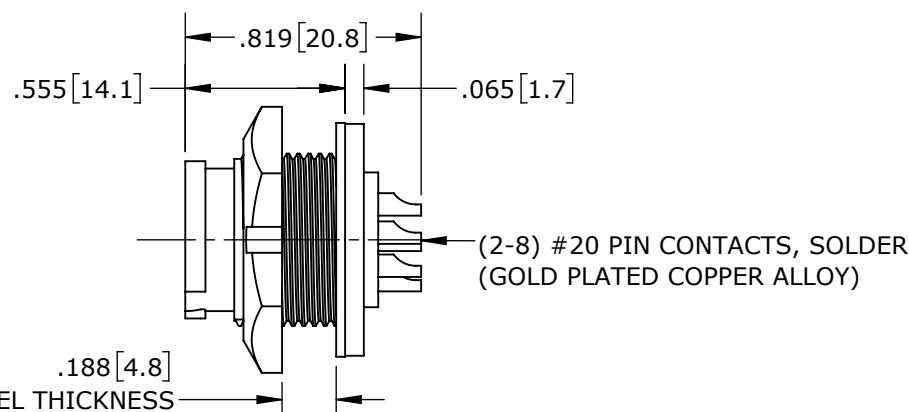
CUSTOMER PRINT

PART NUMBER: W728X-XPG-P-3XX_CD

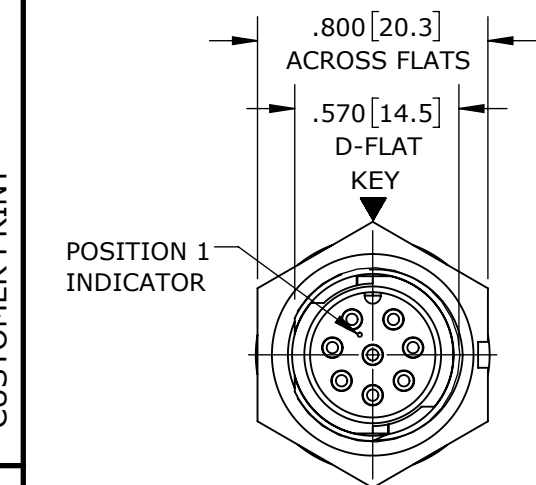
- NOTES:
1. CRIMP CONTACTS SUPPLIED UNASSEMBLED AND WITHOUT EPOXY BACKING.
 2. REFER TO DRAWING HPMISTD FOR CONTACT PATTERNS.
 3. HEX-NUT TORQUE: 8-10 IN-LB.
 4. DIMENSIONS ARE REFERENCE ONLY, IN INCHES [mm], WITHIN ±0.015 UNLESS OTHERWISE NOTED.



CRIMP CONTACTS (SHOWN ASSEMBLED)
W7280-8PG-P-300 SHOWN



SOLDER CONTACTS
W7282-8PG-P-300 SHOWN



MATING FACE
W7282-8PG-P-300 SHOWN

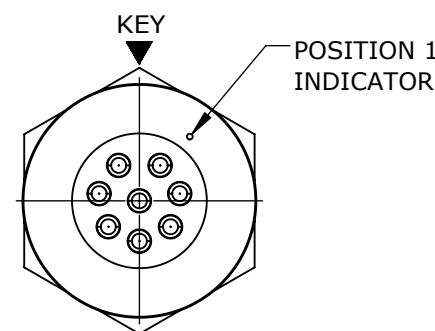
PANEL-MOUNT CONNECTOR PART NUMBERS:

W 7 2 8 X - X P G - P - 3XX

CONTACTS STYLE:
0 = CRIMP
2 = SOLDER
1 = PC TAIL

OF CONTACTS:
2-8 #20 PINS

EPOXY BACKING:
3ES = WITH EPOXY
300 = WITHOUT EPOXY



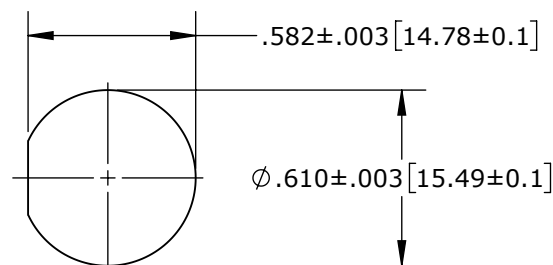
WIRING END
W7282-8PG-P-300 SHOWN

CUSTOMER APPROVAL

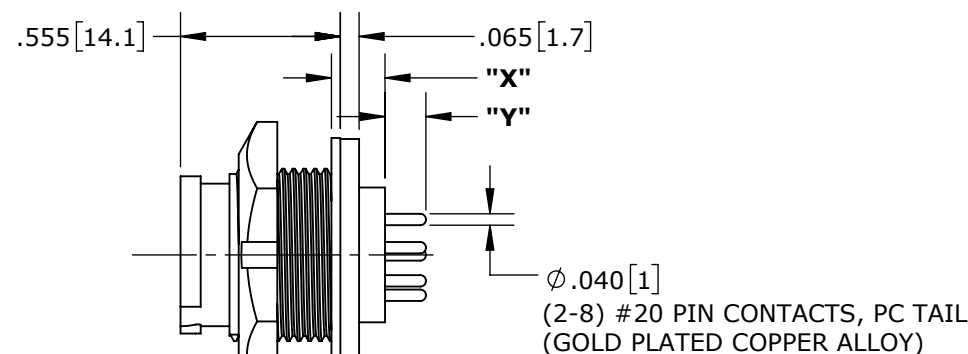
THIS DOCUMENT CONTAINS CONFIDENTIAL INFORMATION PROPRIETARY TO CONXALL CORPORATION. ANY REPRODUCTION, DISCLOSURE, OR USE OF THIS DOCUMENT / INFORMATION IS EXPRESSLY PROHIBITED UNLESS AUTHORIZED IN WRITING BY CONXALL CORPORATION.

APPROVED BY: _____

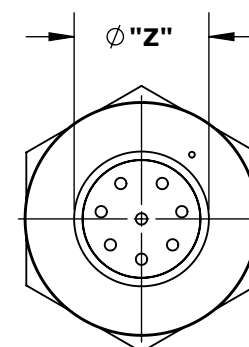
DATE: _____



RECOMMENDED PANEL CUTOUT



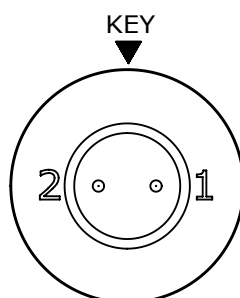
PC TAIL CONTACTS
W7281-8PG-P-3ES SHOWN



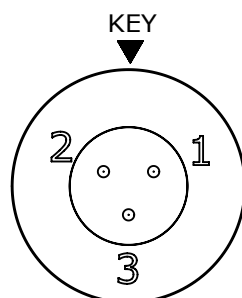
WIRING END
W7281-8PG-P-3ES SHOWN

PC CONTACT CONNECTORS DIMENSIONING:

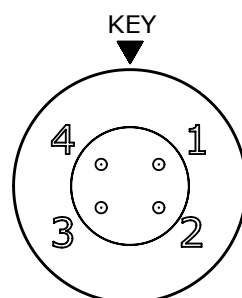
PART NUMBER	"X"	"Y"	"Z"
W7281-2PG-P-300	.126 [3.2]	.191 [4.9]	.372 [9.4]
W7281-3PG-P-300	.143 [3.6]	.174 [4.4]	.410 [10.4]
W7281-4PG-P-300			
W7281-5PG-P-300			
W7281-6PG-P-300	.146 [3.6]	.171 [4.3]	.468 [11.9]
W7281-7PG-P-300			
W7281-2PG-P-3ES	.184 [4.7]	.137 [3.5]	.435 [11]
W7281-3PG-P-3ES	.143 [3.6]	.174 [4.4]	.410 [10.4]
W7281-4PG-P-3ES			
W7281-5PG-P-3ES			
W7281-6PG-P-3ES	.186 [4.7]	.147 [3.7]	.468 [11.9]
W7281-7PG-P-3ES	.143 [3.6]	.174 [4.4]	.410 [10.4]
W7281-8PG-P-3ES			
W7281-8PG-P-3ES	.186 [4.7]	.142 [3.6]	.468 [11.9]



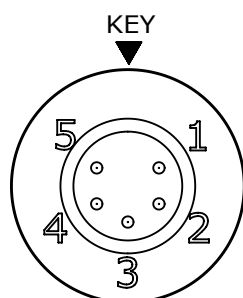
W7281-2PG-P-3ES



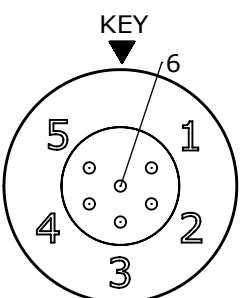
W7281-3PG-P-3ES



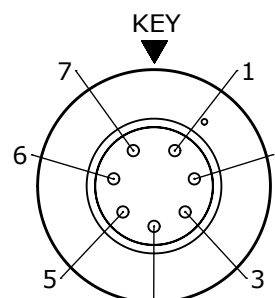
W7281-4PG-P-3ES



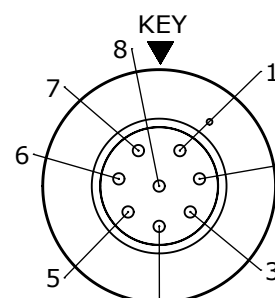
W7281-5PG-P-3ES



W7281-6PG-P-3ES



W7281-7PG-P-3ES



W7281-8PG-P-3ES

CONTACT ARRANGEMENTS (WIRING END SHOWN)

RoHS COMPLIANT

0A	PNK	01-12-18	PDR16014
REV.	INIT.	DATE	DESCRIPTION
			ORIG. DRAWN BY: PNK DATE: 01-12-18
ALL INFORMATION ILLUSTRATED IS THE PROPERTY OF CONXALL CORPORATION. UNAUTHORIZED REPRODUCTION OR DISTRIBUTION OF THIS DOCUMENT IS PROHIBITED.			<p>601 E. WILDWOOD VILLA PARK, IL 60181</p>
ALL UNITS ARE IN FEET, INCHES, FRACTION OF INCHES AND DECIMALS.			
APPROVED BY:		TITLE: PANEL-MOUNT CONNECTOR	
SCALE: NTS		2-8 #20 PIN CONTACTS	
SIZE: B		INSTA-CLICK™ MINI-CON-X	
SHEET: 1 OF 1		CUSTOMER: STANDARD PRODUCT	
FILE: W728X-XPG-P-3XX_CD	DIRECTORY: SLW	PART NUMBER: W728X-XPG-P-3XX	REV: 0A

Mouser Electronics

Authorized Distributor

Click to View Pricing, Inventory, Delivery & Lifecycle Information:

Switchcraft:

[W7282-2PG-P-3ES](#) [W7281-8PG-P-300](#) [W7282-3PG-P-300](#) [W7282-7PG-P-3ES](#) [W7281-3PG-P-3ES](#) [W7280-7PG-P-300](#) [W7281-2PG-P-3ES](#) [W7282-5PG-P-300](#) [W7281-6PG-P-3ES](#) [W7281-7PG-P-300](#) [W7282-4PG-P-3ES](#) [W7280-3PG-P-300](#) [W7282-8PG-P-3ES](#) [W7282-7PG-P-300](#) [W7282-6PG-P-3ES](#) [W7282-8PG-P-300](#) [W7281-3PG-P-300](#) [W7282-3PG-P-3ES](#) [W7281-2PG-P-300](#) [W7280-4PG-P-300](#) [W7281-4PG-P-3ES](#) [W7281-5PG-P-3ES](#) [W7282-2PG-P-300](#) [W7281-8PG-P-3ES](#) [W7280-2PG-P-300](#) [W7282-5PG-P-3ES](#) [W7281-6PG-P-300](#) [W7281-7PG-P-3ES](#) [W7280-5PG-P-300](#) [W7280-6PG-P-300](#) [W7280-8PG-P-300](#) [W7281-4PG-P-300](#) [W7282-6PG-P-300](#) [W7281-5PG-P-300](#) [W7282-4PG-P-300](#)