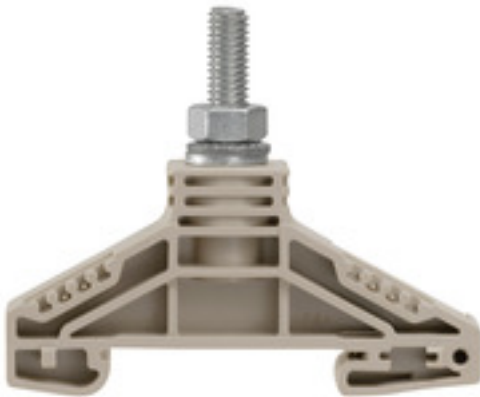


## Bolt-type screw terminals WF 6

**Weidmüller Interface GmbH & Co. KG**  
 Klingenbergstraße 26  
 D-32758 Detmold  
 Germany  
 Fon: +49 5231 14-0  
 Fax: +49 5231 14-292083  
 www.weidmueller.com

### Product image



### Klippon® Connect with stud Technology

Our stud terminals are an established, robust connection alternative for particularly harsh environments. The extensive accessories and quality workmanship ensure high productivity in planning and installation – and sustainable safety in operation..

### General ordering data

Type	WF 6
Order No.	<a href="#">1780850000</a>
Version	Bolt-type screw terminals, Feed-through terminal, Rated cross-section: 35 mm <sup>2</sup> , Threaded stud connection
GTIN (EAN)	4032248219339
Qty.	25 pc(s).

**Bolt-type screw terminals**  
**WF 6**

**Weidmüller Interface GmbH & Co. KG**  
 Klingenbergstraße 26  
 D-32758 Detmold  
 Germany  
 Fon: +49 5231 14-0  
 Fax: +49 5231 14-292083  
 www.weidmueller.com

**Technical data****Dimensions and weights**

Width	17.8 mm	Width (inches)	0.701 inch
Height	67 mm	Height (inches)	2.638 inch
Depth	54.5 mm	Depth (inches)	2.146 inch
Net weight	26.494 g		

**Temperatures**

Storage temperature, max.	40 °C	Storage temperature, min.	10 °C
Storage temperature	10 °C...40 °C	Continuous operating temp., min.	-50 °C
Continuous operating temp., max.	120 °C		

**Material data**

Material	Wemid	Colour	dark beige
UL 94 flammability rating	V-0		

**System specifications**

Version	Single-stud terminals	End cover plate required	No
Number of levels	1	Number of clamping points per level	1
Levels cross-connected internally	No	PE connection	No
Rail	TS 35		

**Additional technical data**

Explosion-tested version	No	Number of similar terminals	1
Open sides	Open	Type of mounting	Snap-on

**CSA rating data**

Certificate No. (CSA)	200039-1244019	Current size C (CSA)	150 A
Voltage size C (CSA)	1000 V	Wire cross section max. (CSA)	2 AWG
Wire cross section min. (CSA)	14 AWG		

**Conductors for clamping (rated connection)**

2 x cable lugs DIN 46 234	2.5 to 35 mm <sup>2</sup>	2 x cable lugs DIN 46 235	6...25 mm <sup>2</sup>
Cable lug to DIN 46234	2.5...35 mm <sup>2</sup>	Cable lug to DIN 46235	6...25 mm <sup>2</sup>
Clamping range, max.	35 mm <sup>2</sup>	Clamping range, min.	2.5 mm <sup>2</sup>
Number of connections	1	Stud size for spade connection	M 6
Tightening torque, max.	6 Nm	Tightening torque, min.	3 Nm
Type of connection	Threaded stud connection		

**Rating data**

Rated cross-section	35 mm <sup>2</sup>	Rated voltage	1,000 V
Voltage with epoxy resin partition plate	2,300 V	Rated current	125 A
Current at maximum wires	125 A	Volume resistance according to IEC 60947-7-x	0.26 mΩ
Power loss in accordance with IEC 60947-7-x	4 W	Rated impulse withstand voltage	8 kV
Impulse voltage with epoxy resin partition plate	12 kV	Pollution severity	3

**Bolt-type screw terminals  
WF 6**

**Weidmüller Interface GmbH & Co. KG**  
 Klingenbergstraße 26  
 D-32758 Detmold  
 Germany  
 Fon: +49 5231 14-0  
 Fax: +49 5231 14-292083  
 www.weidmueller.com

**Technical data**
**Stud connection**

2 x cable lugs DIN 46 234	2.5 to 35 mm <sup>2</sup>	2 x cable lugs DIN 46 235	6...25 mm <sup>2</sup>
Cable lug to DIN 46234	2.5...35 mm <sup>2</sup>	Cable lug to DIN 46235	6...25 mm <sup>2</sup>
Impulse voltage with epoxy resin partition plate	12 kV	Stud size for spade connection	M 6
Tightening torque, max.	6 Nm	Tightening torque, min.	3 Nm
Voltage with epoxy resin partition plate	2,300 V		

**UL rating data**

Certificate No. (UR)	E60693	Certificate No. (cURus)	E60693
Conductor size Factory wiring max. (UR)	2 AWG	Conductor size Factory wiring min. (UR)	14 AWG
Conductor size Field wiring max. (UR)	2 AWG	Conductor size Field wiring min. (UR)	14 AWG
Current size C (UR)	115 A	Voltage size C (UR)	1000 V

**Classifications**

ETIM 6.0	EC000897	ETIM 7.0	EC000897
eClass 9.0	27-14-11-20	eClass 9.1	27-14-11-20
eClass 10.0	27-14-11-20	UNSPSC	30-21-18-01

**Approvals**

Approvals



ROHS Conform

**Downloads**

Approval/Certificate/Document of Conformity	<a href="#">CB Test Certificate</a> <a href="#">CB Certificate</a> <a href="#">DE_PT1004_20160418_848_ISSUE01.pdf</a>
Brochure/Catalogue	<a href="#">CAT 1 TERM 16/17 EN</a>
Engineering Data	<a href="#">EPLAN, WSCAD</a>
Engineering Data	<a href="#">STEP</a>
User Documentation	<a href="#">StorageConditionsTerminalBlocks</a>

**Safety note**

 Safety notice [Safety Information](#)

**Data sheet**

**Bolt-type screw terminals  
WF 6**

**Weidmüller Interface GmbH & Co. KG**  
Klingenbergstraße 26  
D-32758 Detmold  
Germany  
Fon: +49 5231 14-0  
Fax: +49 5231 14-292083  
[www.weidmueller.com](http://www.weidmueller.com)

**Drawings**

