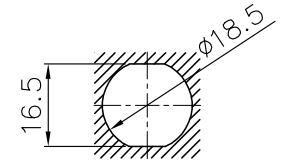
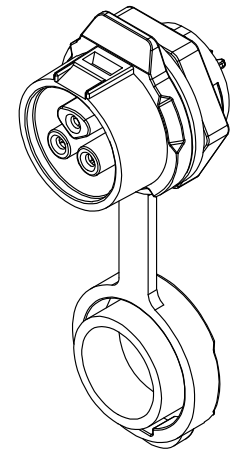
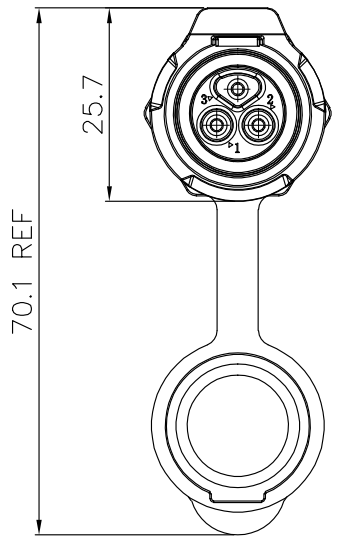
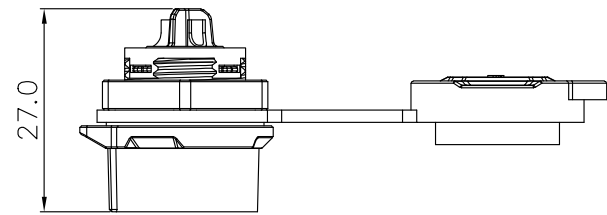
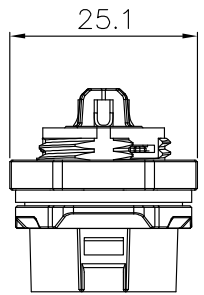


REV	MODIFICATION	DATE	DRAW	APPROVE



RECOMMENDED PANEL HOLE

SPECIFICATIONS:
 Current Rating: PIN Number-A 10A; PIN Number-B 5A
 Operating Voltage: 400V MAX.
 Voltate Rating: 2500V MAX.
 Contact Resistance: 5.0mΩ MAX.
 Cable OD: ϕ 3.0- ϕ 8.5mm
 Waterproof Standard: IP 67

2	Contact	Phosphor Bronze	Gold Ptd.	2-9
1	Housing	PBT		4
No.	Description	Material	Treat	Q'ty

TYPE	PIN NUMBER-A(10A)				PIN NUMBER-B(5A)			
P/N:	0271 02	0271 03	0271 04	0271 05	0271 07	0271 08	0271 09	
Female Contact Face View								
Number Of Contact	2	3	4	5	7	8	9	

-TOLERANCES-
UNLESS OTHERWISE SPECIFIED

X.X ±0.25	X* REF ± 5*
X.XX ±0.15	X.* ± 3*
X.XXX±0.05	X*X* ± 1*

Lumberg
passion for connections

TITLE: LP16 Serie 271 Female Socket With Single Hole All Plastic

DRAWN: ROBIN, 02/01/2018

CHECKED: _____

APPROVED: _____

SCALE: AS SHOWN UNIT: mm

PORJ. SIZE A4 REV. A SHEET. A/A