

**CONTACT ARRANGEMENT**

code for x	function	connected terminals
D	ON - ON	1-2 alternating with 2-3
F	ON - MOM	rest position: 1-2; pushed down: 2-3

**RATING**

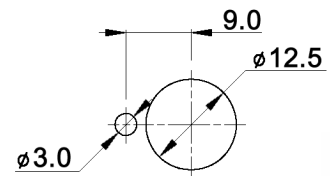
y	contacts	all other conductive parts	rating DC	rating AC
empty	Ag (solid)	Brass, 10 µm Ag over 1.5 µm Ni	6V / 6 A 12V / 5 A 30V / 4 A	125 V / 6 A 250 V / 3 A
B	Brass, 2 µm Au over 3 µm Ni	Brass, 2 µm Au over 3 µm Ni	max. 0.4 VA, max. 20 V AC/DC	
G	Ag (solid), 2 µm Au over 3 µm Ni	Brass, 2 µm Au over 3 µm Ni	6V / 6 A 12V / 5 A 30V / 4 A 150 V / 10 mA	125 V / 6 A 250 V / 3 A

Min. rating for silver contacts: 10mA, 5V AC/DC  
 Min. rating for gold plated contacts: 1µA, 20mV AC/DC

**Specifications:**

Contact resistance: 20mOhm max.  
 Insulation resistance: 1 000MOhm min. at 500V DC  
 Dielectric strength: 1 500V, 50Hz for the duration of 1 minute  
 Operating temperature: -45°C to +140°C  
 Mechanical life: min. 30 000 cycles  
 Soldering conditions: hand-soldering: max.: 420°C, 3sec., 60W  
 auto-soldering: max.: 270°C, 5sec.  
 Mounting instruction: max. torque: 137Ncm  
 Material: Case: DAP  
 Housing: steel, nickel plated  
 Bushing: copper alloy, C3604BD nickel plated  
 Actuator: copper alloy, C3604BD chrome plated  
 Included accessories: 2 pcs. nut 15/32-32, nickel plated, 14mm wrench size  
 1 pc. tooth washer  
 1 pc. locking washer

**PANEL MOUNTING**



**Compliance: RohS III (2015/863/EU)**

Tolerances: 0.00: ±0.25mm 0.0: ±0.40mm		Date	Name	<h1>MPG 106 x y</h1>
		07/09	dr	
Material	11/21	dr		
Contact arrangement	07/15	dr		
Revised	11/11	dr		
Dimension	01/11	dr		<h2>30 18 88</h2>
Travel	02/10	dr	<b>knitter-switch</b>	
Actuator dim	07/09	ok		
Modifications	Date	Name		Page 1/1