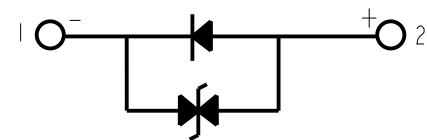
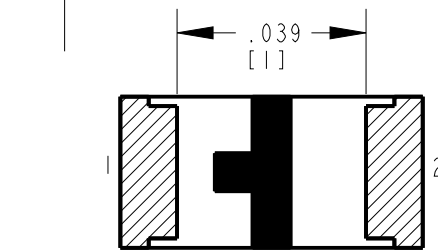
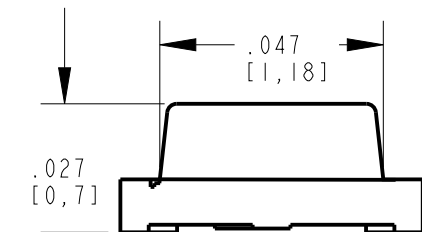
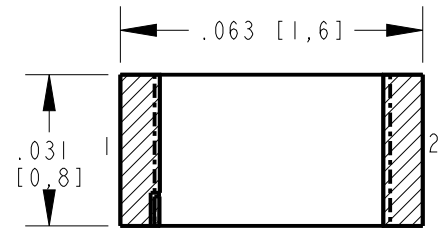


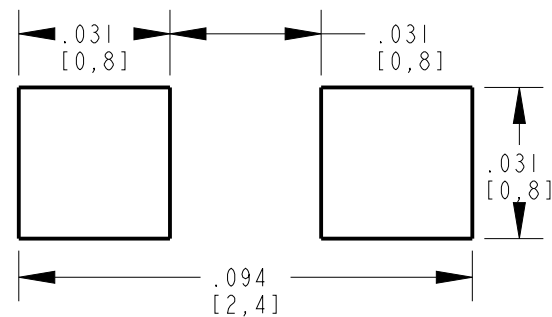
DIALIGHT PART NO.	LED COLOR
598-2000-107F	WHITE
598-2000-102F	(X=0.30, Y=0.30)
598-2005-107F	WHITE
598-2005-102F	(X=0.29, Y=0.33)

REV	ECN NO	REVISIONS	DRN	CKD	APP	DATE
A	106343	NEW RELEASE	JSG	CS	NO	02JUN23

- NOTES:
- PIN NUMBERS ARE FOR REFERENCE ONLY, DESIGNATION NON-EXISTENT ON PART.
 - LABELING FOR REEL AND OUTSIDE OF ALUMINUM BAG, DIALIGHT P/N, QUANTITY PER REEL, DATE CODE, INTENSITY BIN CODE, LOT NUMBER AND COUNTRY OF ORIGIN.
 - THIS PRODUCT IS RoHS COMPLIANT. EACH BAG IS TO BE MARKED WITH RoHS COMPLIANT LABEL OR EQUIVALENT MARKINGS. LED MUST BE Pb FREE.
 - MOISTURE SENSITIVITY LEVEL 3.
 - QUANTITY : PART NUMBERS END WITH 107F REFER AS 4000 PCS/ REEL
PART NUMBERS END WITH 102F REFER AS 20 PCS/ STRIP

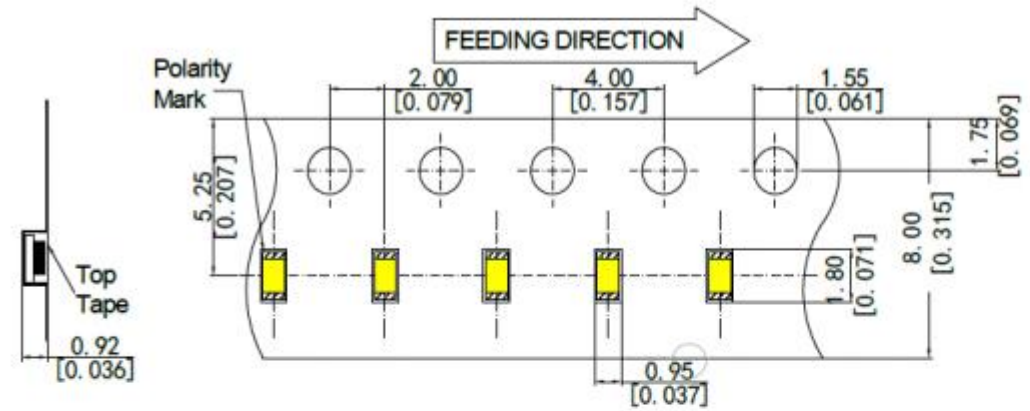


LED SCHEMATIC

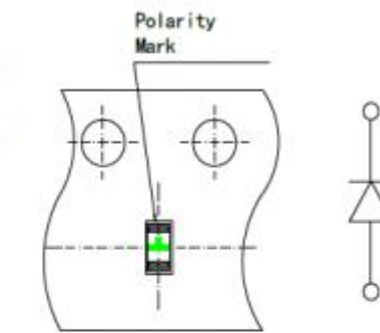


RECOMMENDED SOLDER PAD LAYOUT

Carrier Tape Dimension

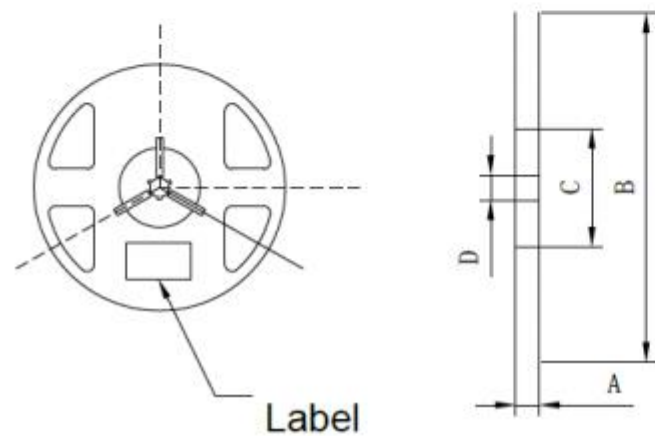


TAPING SPECIFICATIONS



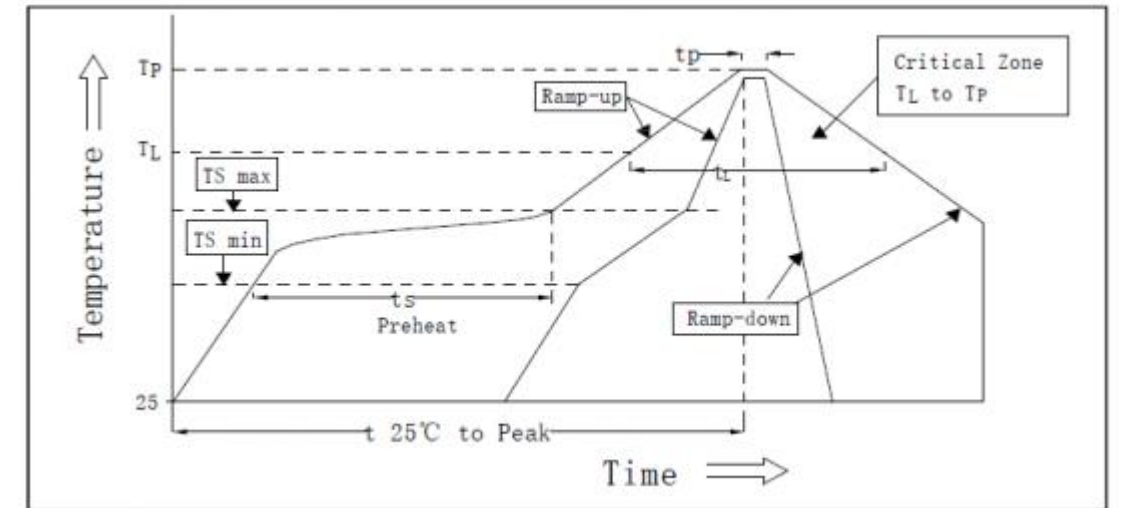
TOLERANCE (UNLESS OTHERWISE SPECIFIED): ±0.003(±0.1mm)

Reel Dimension



A	8.0±0.1mm
B	178±1mm
C	60±1mm
D	13.0±0.5mm

RECOMMENDED RoHS SOLDER PROFILE



MARK	DEFINITION	CONDITION
$T_{S_{max}}$	MAXIMUM OF PRE-HEATING TEMPERATURE	200°C
$T_{S_{min}}$	MINIMUM OF PRE-HEATING TEMPERATURE	150°C
T_s	TIME FORM T_{smin} To T_{smax}	60s-120s
T_L	REFERENCE TEMPERATURE	217°C
t_L	RETENTION TIME FOR T_L	60s-150s
T_P	PEAK TEMPERATURE	260°C
t_p	TIME FOR PEAK TEMPERATURE	WITHIN 10s
DTr/Dt	TEMPERATURE RISING RATE	WITHIN 3°C/sec
DTd/Dt	TEMPERATURE DECREASING RATE	WITHIN 6°C/sec

ABSOLUTE MAXIMUM RATINGS AT 25°C

LED COLOR (mcd)	POWER DISSIPATION (mW)	FORWARD CURRENT (mA)	PEAK FORWARD CURRENT (mA) 1/10 DUTY CYCLE, 0.1ms PULSE WIDTH	OPERATING TEMPERATURE (°C)	STORAGE TEMPERATURE (°C)	DERATING CURVE (mA/°C)	ELECTROSTATIC DISCHARGE (V)
WHITE (65-200)	102	30	100	-40°C TO +85°C	-40°C TO +85°C	.416	5000
WHITE (500-1000)	108	30	60	-40°C TO +85°C	-40°C TO +85°C	.416	5000

OPERATING CHARACTERISTICS AT 25°C AMBIENT

LED COLOR (mcd)	TEST CONDITION (mA)	LUMINOUS INTENSITY (mcd)		FORWARD VOLTAGE (V)		CHROMATICITY COORDINATED (CALCULATED)	REVERSE CURRENT (uA)	VIEWING ANGLE (DEGREES)	THERMAL RESISTANCE (°C/W)
		TYP	MIN	MAX	MIN				
WHITE (65-200)	5mA	65	200	2.6	3.4	X=.307, Y=.304	10µA @ VR=5V	140	450
WHITE (500-1000)	20mA	500	1000	2.8	3.6	X=.299, Y=.330			

THIS DRAWING AND THE CONTENTS HEREIN ARE CONFIDENTIAL AND THE SOLE PROPERTY OF DIALIGHT CORP. REPRODUCTION OF THIS DRAWING OR CONSTRUCTION OF ANY PARTS WITHIN THIS DRAWING ARE FORBIDDEN WITHOUT THE WRITTEN CONSENT OF DIALIGHT CORP.

DIALIGHT CORP. INTERNAL REFERENCE ONLY = 3D MODEL : 4500521864X23- .I		DRAWING NUMBER	REV
SCALE: 25.000	C-18693		A
ALL DIM's: INCH (mm)	TITLE		
TOLERANCES: UNLESS OTHERWISE SPECIFIED	SM 0603 WHITE LED 0.7mm THICK		
FRACTIONS: ±1/64	MATERIAL		
DECIMALS (.XX): ±.01	Dialight		
DECIMALS (.XXX): ±.005	1501 ROUTE 34 SOUTH		
DECIMALS (.XXXX): ±.0005	FARMINGDALE, NJ 07727		
ANGLES: ±1°	FINISH		
FSCM 83330	SHEET 1 OF 1		FAMILY TABLE:



ATTENTION:
OBSERVE PRECAUTIONS FOR
HANDLING ELECTROSTATIC
SENSITIVE DEVICES