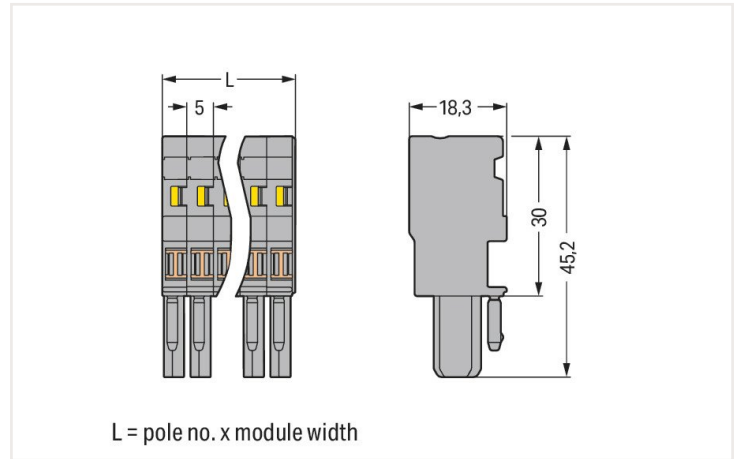
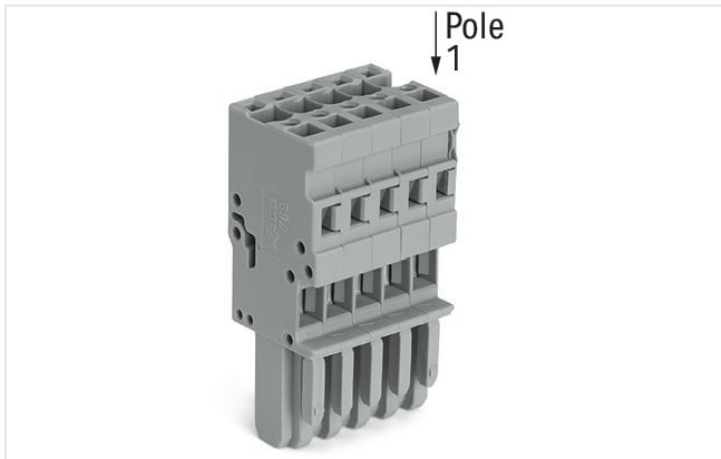


**Data sheet | Item number: 769-103**

1-conductor female connector; CAGE CLAMP®; 4 mm<sup>2</sup>; Pin spacing 5 mm; 3-pole; coding finger; 4,00 mm<sup>2</sup>; gray

<https://www.wago.com/769-103>



Dimensions in mm

## Notes

Safety information 1

According to EN 61984, pluggable connectors without current interrupting capacity must not be mated or unmated when live or under load.

## Electrical data

## Ratings per IEC/EN

|                               |  |
|-------------------------------|--|
| Ratings per                   | IEC/EN 61984   |
| Nominal voltage (III/3)       | 500 V  |
| Rated impulse voltage (III/3) | 6 kV   |
| Rated current                 | 32 A   |
| Legend (ratings)              | (III / 3) $\Delta$ Overvoltage category III / Pollution degree 3 |

## Connection data

|                            |   |
|----------------------------|---|
| Connection points          | 3 |
| Total number of potentials | 3 |

## Connection 1

|                                 |  |
|---------------------------------|--|
| Connection technology           | CAGE CLAMP®                                |
| Actuation type                  | Operating tool                             |
| Connectable conductor materials | Copper                                     |
| Nominal cross-section           | 4 mm <sup>2</sup> / 12 AWG                 |
| Solid conductor                 | 0.08 ... 4 mm <sup>2</sup> / 28 ... 12 AWG |
| Fine-stranded conductor         | 0.08 ... 4 mm <sup>2</sup> / 28 ... 12 AWG |
| Strip length                    | 8 ... 9 mm / 0.31 ... 0.35 inches          |
| Pole number                     | 3  |
| Wiring direction                | Front-entry wiring                         |

## Physical data

|              |                       |
|--------------|-----------------------|
| Width        | 15 mm / 0.591 inches  |
| Height       | 45.2 mm / 1.78 inches |
| Depth        | 18.3 mm / 0.72 inches |
| Module width | 5 mm / 0.197 inches   |

## Mechanical data

|  |              |
|--|--------------|
| Variable coding  | Yes          |
| Direct ground contact to DIN-rail/drilled hole/housing | No           |
| Marking level  | Side marking |
| Anti-rotation protection                               | Yes          |

## Plug-in connection

|                                      |                         |
|--------------------------------------|-------------------------|
| Contact type (pluggable connector)   | Female connector/socket |
| Connector (connection type)          | for conductor           |
| Mismating protection                 | No                      |
| Plugging without loss of pin spacing | Yes                     |

## Material data

|                             |  |
|-----------------------------|--|
| Note (material data)        | <a href="#">Information on material data can be found here</a> |
| Color                       | gray   |
| Material group              | I  |
| Insulation material         | Polyamide (PA66)   |
| Flammability class per UL94 | V0   |
| Fire load                   | 0.155 MJ   |
| Halogen-free                | Yes  |
| Weight                      | 9.4 g  |

## Environmental requirements

|                                  |                 |
|----------------------------------|-----------------|
| Processing temperature           | -35 ... +85 °C  |
| Continuous operating temperature | -60 ... +105 °C |

## Commercial data

|                                     |                   |
|-------------------------------------|-------------------|
| Product Group                       | 18 (X-COM-System) |
| eCl@ss 10.0                         | 27-14-11-06       |
| eCl@ss 9.0                          | 27-14-11-06       |
| ETIM 8.0                            | EC001284          |
| ETIM 7.0                            | EC001284          |
| PU (SPU)                            | 50 Stück          |
| Packaging type                      | Box               |
| Country of origin VKOrg Germany     | DE                |
| GTIN                                | 4044918471343     |
| Customs tariff number VKOrg Germany | 85366990990       |

## Approvals and certificates

### General approvals



| Approval                                | Standard      | Certificate name |
|---|---------------|------------------|
| CCA<br>DEKRA Certification B.V.         | EN 60947      | NTR NL-7626      |
| CCA<br>DEKRA Certification B.V.         | EN 61984      | 2190419.02       |
| CCA<br>DEKRA Certification B.V.         | IEC 61984     | NL-47799/A1      |
| CSA<br>DEKRA Certification B.V.         | C22.2 No. 158 | 1101144          |
| KEMA/KEUR<br>DEKRA Certification B.V.   | EN 60947      | 2190419.01       |
| UR<br>Underwriters Laboratories<br>Inc. | UL 1977       | E45171           |
| UR<br>Underwriters Laboratories<br>Inc. | UL 1059       | E45172           |

### Approvals for marine applications



| Approval                                | Standard | Certificate name |
|---|----------|------------------|
| ABS<br>American Bureau of Ship-<br>ping | EN 60947 | 20-HG1941090-PDA |
| BV<br>Bureau Veritas S.A.               | EN 60947 | 07436/F0 BV      |

**Downloads**

**Environmental Product Compliance**

|  |                   |
|--|-------------------|
| Compliance Search                        |                   |
| Environmental Product Compliance 769-103 | <a href="#">↓</a> |

**Documentation**

|                        |                   |                   |
|------------------------|-------------------|-------------------|
| Additional Information |                   |                   |
| Technical Section      | pdf<br>2142.18 KB | <a href="#">↓</a> |

|          |            |                 |                   |  |
|----------|------------|-----------------|-------------------|--|
| Bid Text |            |                 |                   |  |
| 769-103  | 19.02.2019 | xml<br>3.20 KB  | <a href="#">↓</a> |  |
| 769-103  | 04.10.2017 | doc<br>25.00 KB | <a href="#">↓</a> |  |

**CAD/CAE-Data**

|                      |                   |
|----------------------|-------------------|
| CAD data             |                   |
| 2D/3D Models 769-103 | <a href="#">↓</a> |

|                           |                   |
|---------------------------|-------------------|
| CAE data                  |                   |
| EPLAN Data Portal 769-103 | <a href="#">↓</a> |
| WSCAD Universe 769-103    | <a href="#">↓</a> |
| ZUKEN Portal 769-103      | <a href="#">↓</a> |

**1 Compatible products**

**1.1 Optional accessories**

**1.1.1 Cover**

**1.1.1.1 Cover**



[Item no.: 769-436](#)  
 Jumper cover; for 1-conductor female plugs; for 5 poles; gray

**1.1.2 Ferrule**

**1.1.2.1 Ferrule**



[Item no.: 216-301](#)  
 Ferrule; Sleeve for 0.25 mm<sup>2</sup> / AWG 24; insulated; electro-tin plated; yellow



[Item no.: 216-302](#)  
 Ferrule; Sleeve for 0.34 mm<sup>2</sup> / 22 AWG; insulated; electro-tin plated; light turquoise



[Item no.: 216-201](#)  
 Ferrule; Sleeve for 0.5 mm<sup>2</sup> / 20 AWG; insulated; electro-tin plated; white



[Item no.: 216-101](#)  
 Ferrule; Sleeve for 0.5 mm<sup>2</sup> / AWG 22; un-insulated; electro-tin plated; silver-colored



[Item no.: 216-202](#)  
 Ferrule; Sleeve for 0.75 mm<sup>2</sup> / 18 AWG; insulated; electro-tin plated; gray



[Item no.: 216-102](#)  
 Ferrule; Sleeve for 0.75 mm<sup>2</sup> / AWG 20; un-insulated; electro-tin plated; silver-colored



[Item no.: 216-203](#)  
 Ferrule; Sleeve for 1 mm<sup>2</sup> / AWG 18; insulated; electro-tin plated; red



[Item no.: 216-103](#)  
 Ferrule; Sleeve for 1 mm<sup>2</sup> / AWG 18; un-insulated; electro-tin plated

### 1.1.2.1 Ferrule



**Item no.: 216-204**

Ferrule; Sleeve for 1.5 mm<sup>2</sup> / AWG 16; insulated; electro-tin plated; black

**Item no.: 216-104**

Ferrule; Sleeve for 1.5 mm<sup>2</sup> / AWG 16; un-insulated; electro-tin plated; silver-colored

**Item no.: 216-206**

Ferrule; Sleeve for 2.5 mm<sup>2</sup> / AWG 14; insulated; electro-tin plated; blue

### 1.1.3 Insulation stop

#### 1.1.3.1 Insulation stop



**Item no.: 769-470**

Insulation stop; 0.08 - 0.2 mm<sup>2</sup> "s" (0.14 mm<sup>2</sup> "f-st"); 5 pieces/strip; white

**Item no.: 769-471**

Insulation stop; 0.25 - 0.5 mm<sup>2</sup>; 5 pieces/strip; light gray

**Item no.: 769-472**

Insulation stop; 0.75 - 1 mm<sup>2</sup>; 5 pieces/strip; dark gray

### 1.1.4 Jumper

#### 1.1.4.1 Jumper



**Item no.: 769-402**

Jumper; insulated; gray

### 1.1.5 Locking system

#### 1.1.5.1 Locking system



**Item no.: 769-430**

Locking lever; gray

**Item no.: 769-431**

Locking lever; orange

### 1.1.6 Marking

#### 1.1.6.1 Label



**Item no.: 210-805**

Labels; for Smart Printer; permanent adhesive; 6 x 15 mm; white

**Item no.: 210-805/000-002**

Labels; for Smart Printer; permanent adhesive; 6 x 15 mm; yellow

#### 1.1.6.2 Marker



**Item no.: 2009-145**

Mini-WSB Inline; for Smart Printer; 1700 pieces on roll; stretchable 5 - 5.2 mm; plain; snap-on type; white

**Item no.: 248-501**

Mini-WSB marking card; as card; not stretchable; plain; snap-on type; white

### 1.1.6.3 Marking strip



**Item no.: 210-831**

Marking strips; on reel; 2.3 mm wide; plain; Self-adhesive; white



**Item no.: 210-832**

Marking strips; on reel; 3 mm wide; plain; Self-adhesive; white



**Item no.: 210-834**

Marking strips; on reel; 5 mm wide; plain; Self-adhesive; white

### 1.1.7 Protective warning marker

#### 1.1.7.1 Cover



**Item no.: 280-415**

Protective warning marker; for 5 terminal blocks; with high-voltage symbol, black; yellow

### 1.1.8 Strain relief

#### 1.1.8.1 Strain relief



**Item no.: 769-1603**

Strain relief housing; gray



**Item no.: 769-411**

Strain relief plate; gray

### 1.1.9 Test and measurement

#### 1.1.9.1 Testing accessories



**Item no.: 210-136**

Test plug; 2 mm Ø; with 500 mm cable; red

### 1.1.10 Tool

#### 1.1.10.1 Operating tool



**Item no.: 210-490**

Operating tool

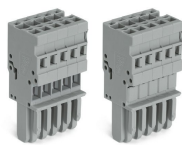
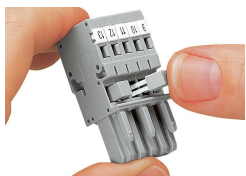


**Item no.: 769-434**

Push-button; loose

### Installation notes

## Commoning



Commoning 1-conductor female plugs via miniature adjacent jumpers.

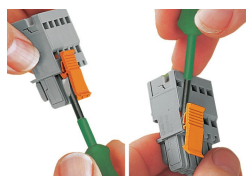
Jumper cover for 1-conductor female plugs

## Coding



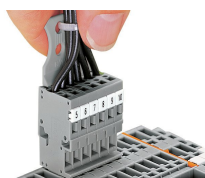
Coding a female plug by removing coding finger(s) via cutting tool. Do not remove the first and last coding fingers or use an additional locking lever.

## Locking system



Locking/releasing a lever.

## Strain relief



Removing a female plug via conductor bundle provided with strain relief plate.

## Marking



Labeling a female plug with CAGE CLAMP® connection via Mini-WSB Quick Markers.