

HONEYWELL PART NUMBER
11SM244-H4
PRODUCT CODE TWW4410

REV	DOCUMENT	CHANGED BY	CHECK
4	0093246	DJS 03OCT12	CMH

B

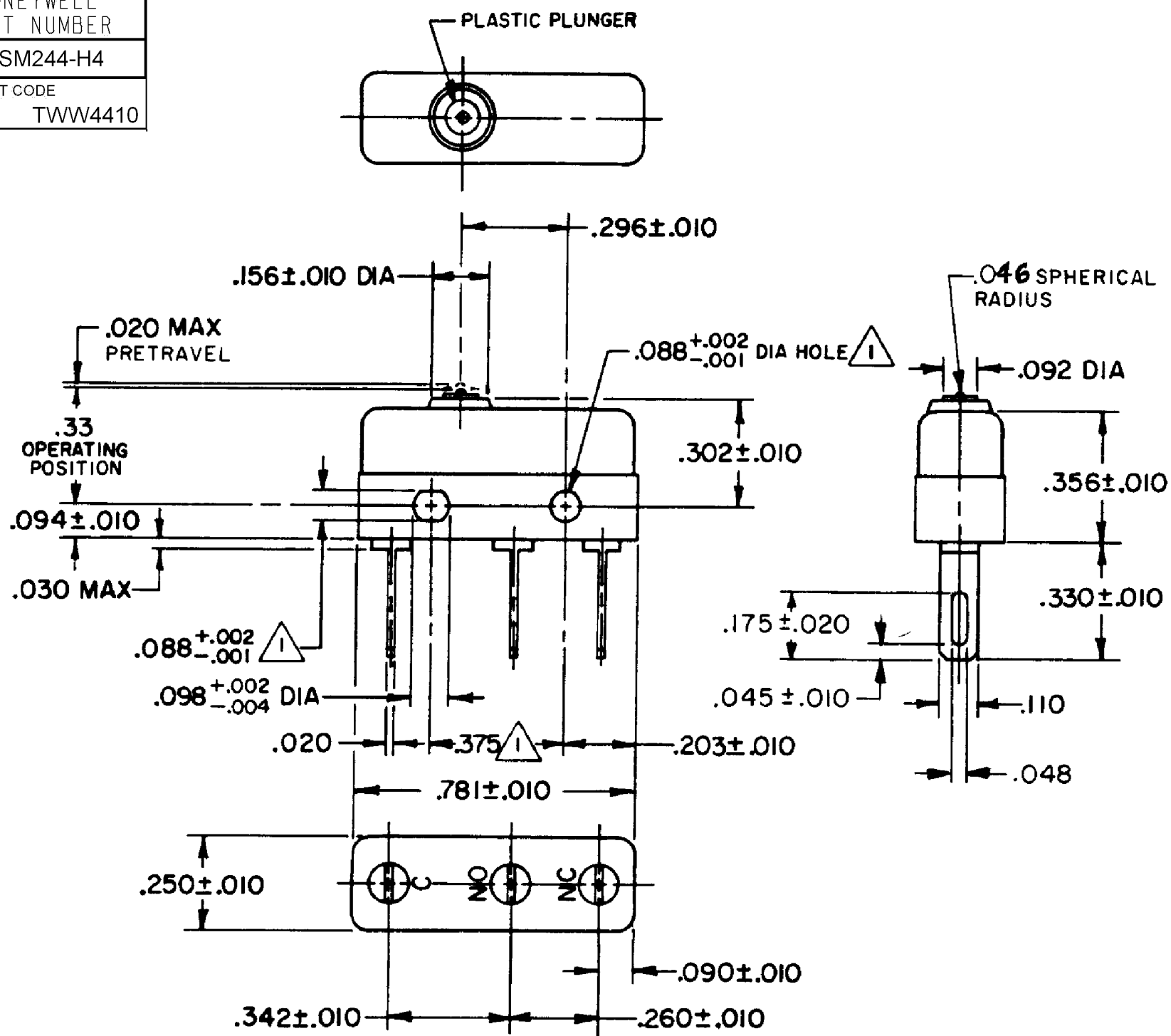
B

A

A

A

A



NOTES

- 1 MOUNTING HOLES WILL ACCEPT PINS OR SCREWS OF .087 MAX DIA ON .375 ±.002 CENTERS
- 2 TERMINALS ARE PLATED FOR SOLDERING
- 3 SWITCH WILL WITHSTAND TEMPERATURE OF 400°F

RELEASE NO.	PR - 11636
REPLACES	-

CHARACTERISTICS
OPERATING FORCE - - - - 3 - 5 OZ
RELEASE FORCE - - - - 1 OZ MIN
DIFFERENTIAL TRAVEL - - - .004 MAX
OVERTRAVEL - - - - - .005 MIN

ELECTRICAL DATA								
<table border="1"> <tr> <td>APPROVALS</td> <td>KEMA, CE</td> <td>5A, 250V ~ T85 1E4</td> <td></td> </tr> <tr> <td></td> <td>UL</td> <td>5A, 250 VAC 0.3A 125 VDC</td> <td></td> </tr> </table>	APPROVALS	KEMA, CE	5A, 250V ~ T85 1E4			UL	5A, 250 VAC 0.3A 125 VDC	
APPROVALS	KEMA, CE	5A, 250V ~ T85 1E4						
	UL	5A, 250 VAC 0.3A 125 VDC						

DESIGN UNITS: INCH
TOLERANCES UNLESS NOTED:
NO PLACE X ±
ONE PLACE .X ±
TWO PLACE .XX ±
THREE PLACE .XXX ±
FOUR PLACE .XXXX ±
ANGLES ±
THIRD ANGLE PROJECTION

DRAWN	VK	27 NOV 07
CHECK	RJ	27 NOV 07
THIS DRAWING COVERS A PROPRIETARY ITEM AND IS THE PROPERTY OF HONEYWELL. THIS DRAWING IS NOT TO BE COPIED OR USED WITHOUT THE PERMISSION OF HONEYWELL.		
INTERPRET PER ANSI Y14.5M-1982 OTHER HONEYWELL ENGINEERING STANDARDS MAY APPLY		
RASTER		

<b>Honeywell</b>			
TITLE SWITCH - BASIC			
SIZE	TYPE	DRAWING NAME	REV
B	I	11SM244-H4	4
SCALE	NONE	WEIGHT .006 LB MAX	SHEET 1 OF 1