

24

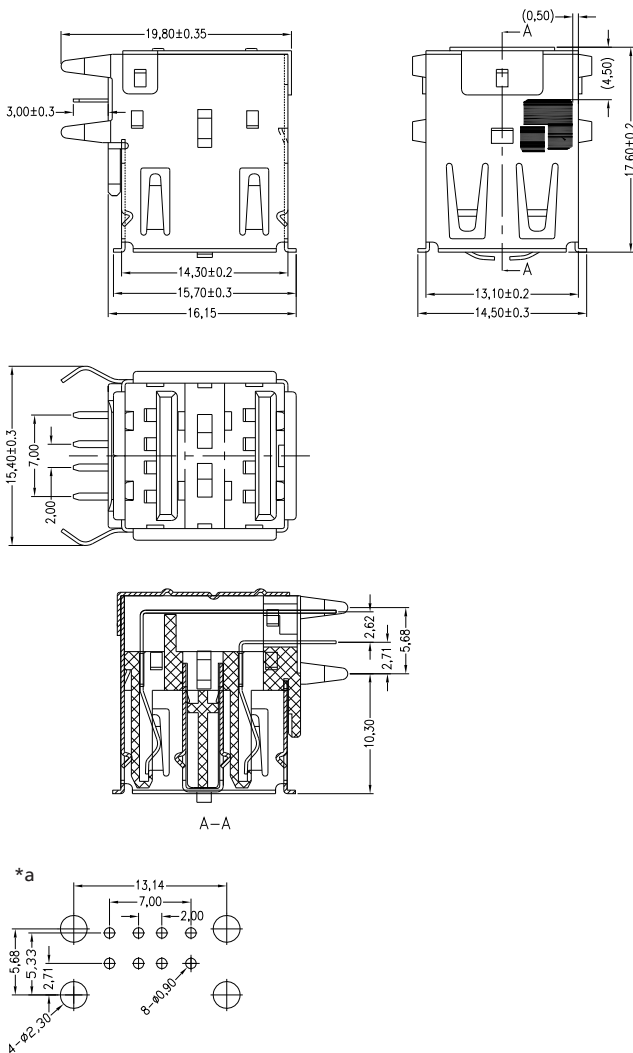
2410 09

USB and IEEE 1394 connectors



Double USB 2.0 chassis socket type A, angular version, for printed circuit boards, with ground contacts at the front

24 2410 09



\*a printed circuit board layout

### Environmental conditions

Temperature range -45 °C/+85 °C

### Materials

Insulating body thermoplast GF, V-0 according to UL94  
 Contact spring Cu alloy, pre-nickel and gold-plated, tin-plated in solder area  
 Ground contact spring Cu alloy, nickel-plated  
 Housing Cu alloy, nickel-plated

### Mechanical data

Insertion force  $\leq 34,3$  N  
 Withdrawal force  $\geq 9,8$  N

### Electrical data (at $T_{amb}$ 20 °C)

Contact resistance  $\leq 30$  m $\Omega$   
 Rated current 1 A  
 Rated voltage 30 V AC  
 Rated impulse voltage 500 V AC/60 s  
 Insulation resistance  $\geq 1$  G $\Omega$

### Associated products

Counterparts  
 ☞ 2410 07 ☞ 2410 08 ☞ 2431  
 ☞ 2480 ☞ 2482

Accessories  
 ☞ 2412 01

24

2410 09

Designation	Pole Number	PU (Pieces)	MDQ (Pieces)
2410 09	2 x 4	100	600

**Packaging:**  
in a tray