

NPYT Series

Radial Leaded Y1 & Y2

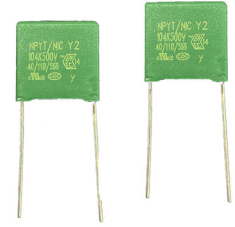
Interference Suppression Capacitors



MOLDED BOX CONSTRUCTION, SUPPRESSION CAPACITOR, RADIAL LEAD

FEATURES

- Molded Radial Leaded Construction
- Self Healing Construction
- Y1 & Y2 Class Safety Capacitors
- Safety Agency Listed: UL, cUL, ENEC, CQC
- IEC 60068-1 Climatic category Y1 55/110/56, Y2 40/110/56



SPECIFICATIONS

Classification	Y2	Y1
Operating Temperature	-40°C ~ +110°C	
Rated Voltage	300/350/500VAC	500VAC
Capacitance Range	470pF ~ 2.0µF	470pF ~ 0.1µF
Capacitance Tolerance	±5% (J), ±10% (K), ±20% (M)	
Insulation Resistance (min.)	C ≤ 0.33µF > 15,000Megohm*µF/C 300V ~ 350V 60 sec. @ 100VDC 500V 60 sec. @ 500VDC	15,000Megohm 500V 60 sec. @ 500VDC
	C > 0.33µF > 5,000Megohm*µF/C All 60 sec. @ 500VDC	
Dissipation Factor	< 0.1% max. @ 1KHz/20°C	
IEC 60068-1 Climatic category (Damp heat, steady state)	40/110/56	55/110/56
	Temp. +40°C ± 2°C with relative humidity (RH): 93% ±2% for 56 days	
Dielectric Strength	Between Terminals	4,000VAC for 2 sec. <0.33µF or 3,700VDC for 2 sec. >0.33µF
	Between Terminals & Enclosure	2,100 VAC for 5 sec. max.
		4,000 VAC for 60 sec. max.

SAFETY AGENCY APPROVALS

Agency	Standard	Certificate Number
UL/cUL	UL60384-14 CSAE60384-14A1	E209251
ENEC	EN60384-14 : 2005	SE-ENEC-2002177R1
CQC	IEC60384-14 : 2013/ AMD1 : 2016	CQC13001099626

Y2 DV/DT RATINGS

Lead-Space (mm)	7.5	10	15	22.5	27.5	32.5	37.5
DV/DT (V/µS)	1000	800	600	500	400	350	300

Y1 DV/DT RATINGS

Lead-Space (mm)	15	22.5	27.5
DV/DT (V/µS)	3000	1000	700

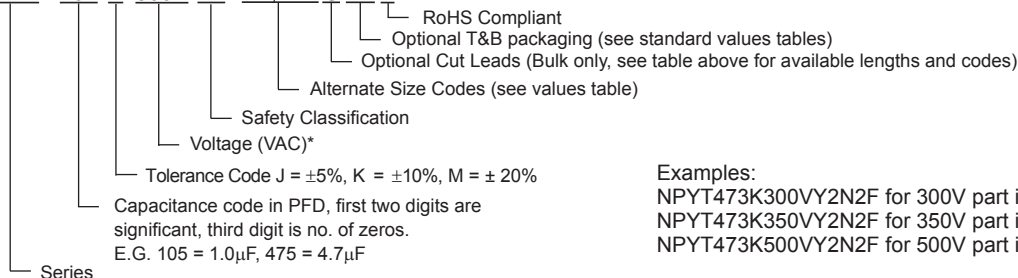
CUT LEAD CODES (BULK PARTS ONLY)

Lead Length*	2.5	3.0	3.5	4.0	4.5	5.0	5.5	6.0	6.5	7.0	7.5
Code	A	B	C	D	E	G	H	J	K	L	M

* Lead length ±0.5mm

PART NUMBER SYSTEM

NPYT 104 K 500V Y2 N1, N2 G T B F



Examples:

NPYT473K300VY2N2F for 300V part in N1 size
NPYT473K350VY2N2F for 350V part in N1 size
NPYT473K500VY2N2F for 500V part in N1 size

Parts are available marked with voltage ratings 300/350/500 (same size).

Performance Passives By Design

NIC Components Corp.
100 Baylis Road. Melville, NY 11747

Page 1
www.niccomp.com

Last Updated 04-17-2023. Specification subject to change without notice. Please check web site for latest information.

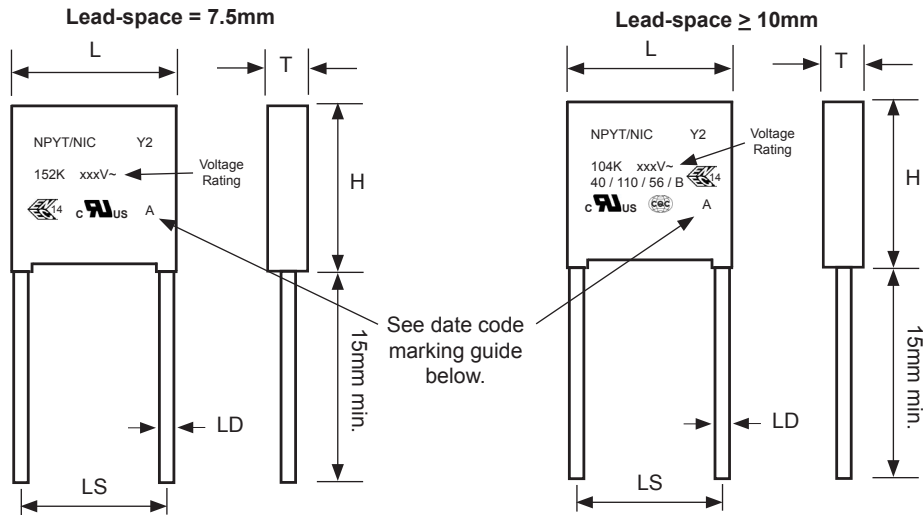
NPYT Series

Radial Leded Y1 & Y2

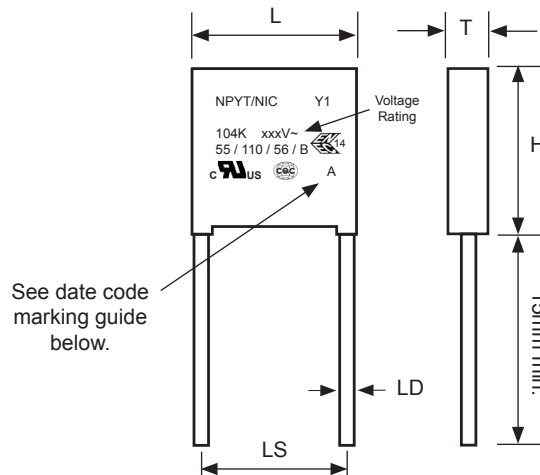
Interference Suppression Capacitors



Y2 MARKING



Y1 MARKING



DATE CODE MARKING

Year	Month	Code	Year	Month	Code	Year	Month	Code	Year	Month	Code
2020	Jan.	n	2021	Jan.	A	2022	Jan.	N	2023	Jan.	a
	Feb.	p		Feb.	B		Feb.	P		Feb.	b
	Mar.	q		Mar.	C		Mar.	Q		Mar.	c
	Apr.	r		Apr.	D		Apr.	R		Apr.	d
	May	s		May	E		May	S		May	e
	Jun.	t		Jun.	F		Jun.	T		Jun.	f
	Jul.	u		Jul.	G		Jul.	U		Jul.	g
	Aug.	v		Aug.	H		Aug.	V		Aug.	h
	Sept.	w		Sept.	J		Sept.	W		Sept.	j
	Oct.	x		Oct.	K		Oct.	X		Oct.	k
	Nov.	y		Nov.	L		Nov.	Y		Nov.	l
	Dec.	z		Dec.	M		Dec.	Z		Dec.	m

NPYT Series

Radial Leaded Y1 & Y2

Interference Suppression Capacitors



Y2 STANDARD 300V VALUES AND CASE SIZE (mm)

Part Number	Cap. Value (µF)	Capacitance Code	Standard Tolerance*	L ±1.0	H ±1.0	T ±1.0	LS ±1.0	LD ±0.05	Packaging Quantity	
									Bulk	T&B
NPYT471K300VY2N1F	0.00047	471	±10% (K)	10.0	9.0	4.0	7.5	0.6	1,000	1,300
NPYT471K300VY2N2F	0.00047	471	±10% (K)	13.0	11.0	5.0	10.0	0.6	500	500
NPYT471K300VY2N3F	0.00047	471	±10% (K)	18.0	11.0	5.0	15.0	0.6	500	450
NPYT561K300VY2N1F	0.00056	561	±10% (K)	10.0	9.0	4.0	7.5	0.6	1,000	1,300
NPYT561K300VY2N2F	0.00056	561	±10% (K)	13.0	11.0	5.0	10.0	0.6	500	500
NPYT561K300VY2N3F	0.00056	561	±10% (K)	18.0	11.0	5.0	15.0	0.6	500	450
NPYT681K300VY2N1F	0.00068	681	±10% (K)	10.0	9.0	4.0	7.5	0.6	1,000	1,300
NPYT681K300VY2N2F	0.00068	681	±10% (K)	13.0	11.0	5.0	10.0	0.6	500	500
NPYT681K300VY2N3F	0.00068	681	±10% (K)	18.0	11.0	5.0	15.0	0.6	500	450
NPYT821K300VY2N1F	0.00082	821	±10% (K)	10.0	9.0	4.0	7.5	0.6	1,000	1,300
NPYT821K300VY2N2F	0.00082	821	±10% (K)	13.0	11.0	5.0	10.0	0.6	500	500
NPYT821K300VY2N3F	0.00082	821	±10% (K)	18.0	11.0	5.0	15.0	0.6	500	450
NPYT102K300VY2N1F	0.001	102	±10% (K)	10.0	9.0	4.0	7.5	0.6	1,000	1,300
NPYT102K300VY2N2F	0.001	102	±10% (K)	13.0	11.0	5.0	10.0	0.6	500	500
NPYT102K300VY2N3F	0.001	102	±10% (K)	18.0	11.0	5.0	15.0	0.6	500	450
NPYT122K300VY2N1F	0.0012	122	±10% (K)	10.0	9.0	4.0	7.5	0.6	1,000	1,300
NPYT122K300VY2N2F	0.0012	122	±10% (K)	13.0	11.0	5.0	10.0	0.6	500	650
NPYT152K300VY2N1F	0.0015	152	±10% (K)	10.0	9.0	4.0	7.5	0.6	1,000	1,300
NPYT152K300VY2N2F	0.0015	152	±10% (K)	13.0	11.0	5.0	10.0	0.6	500	500
NPYT152K300VY2N3F	0.0015	152	±10% (K)	18.0	11.0	5.0	15.0	0.6	500	450
NPYT182K300VY2N1F	0.0018	182	±10% (K)	10.0	9.0	4.0	7.5	0.6	1,000	1,300
NPYT182K300VY2N3F	0.0018	182	±10% (K)	13.0	11.0	5.0	10.0	0.6	500	500
NPYT222K300VY2N1F	0.0022	222	±10% (K)	10.5	11.0	5.0	7.5	0.6	1,000	1,300
NPYT222K300VY2N2F	0.0022	222	±10% (K)	13.0	11.0	5.0	10.0	0.6	500	500
NPYT222K300VY2N3F	0.0022	222	±10% (K)	18.0	11.0	5.0	15.0	0.6	500	450
NPYT272K300VY2N1F	0.0027	272	±10% (K)	10.5	11.0	5.0	7.5	0.6	1,000	1,300
NPYT272K300VY2N2F	0.0027	272	±10% (K)	13.0	11.0	5.0	10.0	0.6	500	500
NPYT272K300VY2N3F	0.0027	272	±10% (K)	18.0	11.0	5.0	15.0	0.6	500	450
NPYT332K300VY2N1F	0.0033	332	±10% (K)	10.5	11.0	5.0	7.5	0.6	1,000	1,300
NPYT332K300VY2N2F	0.0033	332	±10% (K)	13.0	11.0	5.0	10.0	0.6	500	500
NPYT332K300VY2N3F	0.0033	332	±10% (K)	18.0	11.0	5.0	15.0	0.6	500	450
NPYT392K300VY2N1F	0.0039	392	±10% (K)	10.5	11.0	5.0	7.5	0.6	1,000	1,300
NPYT392K300VY2N2F	0.0039	392	±10% (K)	13.0	11.0	5.0	10.0	0.6	500	500
NPYT392K300VY2N3F	0.0039	392	±10% (K)	18.0	11.0	5.0	15.0	0.6	500	450
NPYT472K300VY2N1F	0.0047	472	±10% (K)	10.5	11.0	5.0	7.5	0.6	1,000	1,300
NPYT472K300VY2N2F	0.0047	472	±10% (K)	13.0	11.0	5.0	10.0	0.6	500	500
NPYT472K300VY2N3F	0.0047	472	±10% (K)	18.0	11.0	5.0	15.0	0.6	500	450
NPYT562K300VY2N1F	0.0056	562	±10% (K)	10.5	11.0	5.0	7.5	0.6	1,000	1,300
NPYT562K300VY2N2F	0.0056	562	±10% (K)	13.0	11.0	5.0	10.0	0.6	500	500
NPYT562K300VY2N3F	0.0056	562	±10% (K)	18.0	11.0	5.0	15.0	0.6	500	450
NPYT682K300VY2N1F	0.0068	682	±10% (K)	13.0	12.0	6.0	10.0	0.6	500	450
NPYT682K300VY2N2F	0.0068	682	±10% (K)	18.0	11.0	5.0	15.0	0.6	500	450
NPYT822K300VY2N1F	0.0082	822	±10% (K)	13.0	12.0	6.0	10.0	0.6	500	450
NPYT822K300VY2N2F	0.0082	822	±10% (K)	18.0	11.0	5.0	15.0	0.6	500	450
NPYT103K300VY2N2F	0.01	103	±10% (K)	18.0	11.0	5.0	15.0	0.6	500	450
NPYT123K300VY2N2F	0.012	123	±10% (K)	18.0	11.0	5.0	15.0	0.6	500	450
NPYT153K300VY2N2F	0.015	153	±10% (K)	18.0	11.0	5.0	15.0	0.6	500	450
NPYT183M300VY2N1F	0.018	183	±20% (M)	18.0	11.0	5.0	15.0	0.6	500	450
NPYT223K300VY2N3F	0.022	223	±10% (K)	17.5	11.0	5.5	15.0	0.6	500	450
NPYT333K300VY2N3F	0.033	333	±10% (K)	25.0	14.5	6.0	22.5	0.8	200	N/A
NPYT393K300VY2N2F	0.039	393	±10% (K)	25.0	14.5	6.0	22.5	0.8	200	N/A

*Also available in ±5% (J) and ±20% (M) tolerance.

Performance Passives By Design

NIC Components Corp.
100 Baylis Road, Melville, NY 11747

NPYT Series

Radial Leaded Y1 & Y2

Interference Suppression Capacitors



Y2 STANDARD 300V VALUES AND CASE SIZE (mm)

Part Number	Cap. Value (µF)	Capacitance Code	Standard Tolerance*	L ±1.0	H ±1.0	T ±1.0	LS ±1.0	LD ±0.05	Packaging Quantity	
									Bulk	T&B
NPYT473K300VY2N2F	0.047	473	±10% (K)	25.0	14.5	6.0	22.5	0.8	200	N/A
NPYT563K300VY2N2F	0.056	563	±10% (K)	25.0	14.5	6.0	22.5	0.8	200	N/A
NPYT683M300VY2N3F	0.068	683	±20% (M)	25.0	14.5	6.0	22.5	0.8	200	N/A
NPYT683K300VY2N4F	0.068	683	±10% (K)	26.5	16.5	7.0	22.5	0.8	200	N/A
NPYT823K300VY2N3F	0.082	823	±10% (K)	26.5	16.5	7.0	22.5	0.8	200	N/A
NPYT104M300VY2N1F	0.1	104	±20% (M)	17.0	16.5	9.5	15.0	0.6	400	250
NPYT104M300VY2N2F	0.1	104	±20% (M)	26.5	16.5	7.0	22.5	0.8	200	N/A
NPYT104K300VY2N3F	0.1	104	±10% (K)	32.0	18.0	9.0	27.5	0.8	100	N/A
NPYT124M300VY2N1F	0.12	124	±20% (M)	26.0	17.0	8.5	22.5	0.8	200	N/A
NPYT124K300VY2N2F	0.12	124	±10% (K)	32.0	18.0	9.0	27.5	0.8	100	N/A
NPYT154K300VY2N1F	0.15	154	±10% (K)	26.5	19.0	10.0	22.5	0.8	200	N/A
NPYT154K300VY2N2F	0.15	154	±10% (K)	32.0	18.0	9.0	27.5	0.8	100	N/A
NPYT184K300VY2N1F	0.18	184	±10% (K)	26.0	20.0	11.0	22.5	0.8	200	N/A
NPYT184K300VY2N2F	0.18	184	±10% (K)	31.4	19.5	10.8	27.5	0.8	100	N/A
NPYT224K300VY2N1F	0.22	224	±10% (K)	26.0	21.5	12.0	22.5	0.8	200	N/A
NPYT224K300VY2N2F	0.22	224	±10% (K)	30.0	21.0	11.8	27.5	0.8	100	N/A
NPYT274K300VY2N1F	0.27	274	±10% (K)	26.5	23.0	13.0	22.5	0.8	200	N/A
NPYT274M300VY2N2F	0.27	274	±20% (M)	31.4	19.5	10.8	27.5	0.8	100	N/A
NPYT274K300VY2N3F	0.27	274	±10% (K)	31.5	21.6	13.0	27.5	0.8	100	N/A
NPYT334K300VY2N1F	0.33	334	±10% (K)	26.0	25.0	15.0	22.5	0.8	200	N/A
NPYT334M300VY2N4F	0.33	334	±20% (M)	31.5	21.6	13.0	27.5	0.8	100	N/A
NPYT334K300VY2N5F	0.33	334	±10% (K)	31.0	25.0	14.0	27.5	0.8	100	N/A
NPYT334K300VY2N7F	0.33	334	±10% (K)	36.0	24.0	13.5	32.5	0.8	50	N/A
NPYT334K300VY2N8F	0.33	334	±10% (K)	42.0	22.0	12.0	37.5	1.0	50	N/A
NPYT394M300VY2N1F	0.39	394	±20% (M)	26.0	25.0	15.0	22.5	0.8	200	N/A
NPYT394K300VY2N4F	0.39	394	±10% (K)	32.0	28.0	14.0	27.5	0.8	100	N/A
NPYT394K300VY2N5F	0.39	394	±10% (K)	36.0	24.0	13.5	32.5	0.8	50	N/A
NPYT394K300VY2N7F	0.39	394	±10% (K)	41.0	24.0	13.0	37.5	1.0	50	N/A
NPYT394M300VY2N8F	0.39	394	±20% (M)	42.0	22.0	12.0	37.5	1.0	50	N/A
NPYT474M300VY2N3F	0.47	474	±20% (M)	32.0	28.0	14.0	27.5	0.8	100	N/A
NPYT474K300VY2N5F	0.47	474	±10% (K)	32.0	30.0	15.0	27.5	0.8	100	N/A
NPYT474K300VY2N7F	0.47	474	±10% (K)	37.0	26.5	16.0	32.5	0.8	50	N/A
NPYT474K300VY2N8F	0.47	474	±10% (K)	41.0	24.0	13.0	37.5	1.0	50	N/A
NPYT474M300VY2N9F	0.47	474	±20% (M)	42.0	22.0	12.0	37.5	1.0	50	N/A
NPYT564K300VY2N1F	0.56	564	±10% (K)	32.0	28.0	18.0	27.5	0.8	100	N/A
NPYT564K300VY2N4F	0.56	564	±10% (K)	37.0	28.0	18.0	32.5	0.8	50	N/A
NPYT564K300VY2N6F	0.56	564	±10% (K)	41.0	28.5	16.0	37.5	1.0	50	N/A
NPYT684M300VY2N1F	0.68	684	±20% (M)	31.0	33.0	18.0	27.5	0.8	100	N/A
NPYT684M300VY2N3F	0.68	684	±20% (M)	31.0	33.0	18.0	27.5	0.8	100	N/A
NPYT684K300VY2N5F	0.68	684	±10% (K)	35.5	31.0	20.0	32.5	0.8	50	N/A
NPYT684M300VY2N6F	0.68	684	±20% (M)	37.0	28.0	18.0	32.5	0.8	50	N/A
NPYT684M300VY2N8F	0.68	684	±20% (M)	41.0	28.5	16.0	37.5	1.0	50	N/A
NPYT684K300VY2N9F	0.68	684	±10% (K)	41.5	30.0	17.0	37.5	1.0	50	N/A
NPYT824M300VY2N1F	0.82	824	±20% (M)	31.0	33.0	18.0	27.5	0.8	100	N/A
NPYT824K300VY2N3F	0.82	824	±10% (K)	32.0	37.0	22.0	27.5	0.8	100	N/A
NPYT824K300VY2N5F	0.82	824	±10% (K)	37.0	33.5	22.0	32.5	0.8	50	N/A
NPYT824K300VY2N6F	0.82	824	±10% (K)	41.5	30.0	17.0	37.5	1.0	50	N/A
NPYT105K300VY2N1F	1.0	105	±10% (K)	32.0	37.0	22.0	27.5	0.8	100	N/A
NPYT105M300VY2N2F	1.0	105	±20% (M)	37.0	33.5	22.0	32.5	0.8	50	N/A
NPYT105M300VY2N5F	1.0	105	±20% (M)	41.5	30.0	17.0	37.5	1.0	50	N/A
NPYT105K300VY2N7F	1.0	105	±10% (K)	41.5	34.0	20.5	37.5	1.0	50	N/A
NPYT155K300VY2N1F	1.5	155	±10% (K)	41.5	41.0	27.5	37.5	1.0	50	N/A
NPYT185K300VY2N2F	1.8	185	±10% (K)	41.5	45.0	30.0	37.5	0.8	50	N/A
NPYT205K300VY2N1F	2.0	205	±10% (K)	41.5	45.0	30.0	37.5	1.0	50	N/A

*Also available in ±5% (J) and ±20% (M) tolerance.

Performance Passives By Design

NIC Components Corp.
100 Baylis Road, Melville, NY 11747

Page 4
www.niccomp.com

NPYT Series

Radial Leaded Y1 & Y2

Interference Suppression Capacitors



Y2 STANDARD 350V VALUES AND CASE SIZE (mm)

Part Number	Cap. Value (µF)	Capacitance Code	Standard Tolerance*	L	H	T	LS	LD	Packaging Quantity	
				±1.0	±1.0	±1.0	±1.0	±0.05	Bulk	T&B
NPYT471K350VY2N1F	0.00047	471	±10% (K)	10.0	9.0	4.0	7.5	0.6	1,000	1,300
NPYT471K350VY2N2F	0.00047	471	±10% (K)	13.0	11.0	5.0	10.0	0.6	500	500
NPYT471K350VY2N3F	0.00047	471	±10% (K)	18.0	11.0	5.0	15.0	0.6	500	450
NPYT561K350VY2N1F	0.00056	561	±10% (K)	10.0	9.0	4.0	7.5	0.6	1,000	1,300
NPYT561K350VY2N2F	0.00056	561	±10% (K)	13.0	11.0	5.0	10.0	0.6	500	500
NPYT561K350VY2N3F	0.00056	561	±10% (K)	18.0	11.0	5.0	15.0	0.6	500	450
NPYT681K350VY2N1F	0.00068	681	±10% (K)	10.0	9.0	4.0	7.5	0.6	1,000	1,300
NPYT681K350VY2N2F	0.00068	681	±10% (K)	13.0	11.0	5.0	10.0	0.6	500	500
NPYT681K350VY2N3F	0.00068	681	±10% (K)	18.0	11.0	5.0	15.0	0.6	500	450
NPYT821K350VY2N1F	0.00082	821	±10% (K)	10.0	9.0	4.0	7.5	0.6	1,000	1,300
NPYT821K350VY2N2F	0.00082	821	±10% (K)	13.0	11.0	5.0	10.0	0.6	500	500
NPYT821K350VY2N3F	0.00082	821	±10% (K)	18.0	11.0	5.0	15.0	0.6	500	450
NPYT102K350VY2N1F	0.001	102	±10% (K)	10.0	9.0	4.0	7.5	0.6	1,000	1,300
NPYT102K350VY2N2F	0.001	102	±10% (K)	13.0	11.0	5.0	10.0	0.6	500	500
NPYT102K350VY2N3F	0.001	102	±10% (K)	18.0	11.0	5.0	15.0	0.6	500	450
NPYT122K350VY2N1F	0.0012	122	±10% (K)	10.0	9.0	4.0	7.5	0.6	1,000	1,300
NPYT122K350VY2N2F	0.0012	122	±10% (K)	13.0	11.0	5.0	10.0	0.6	500	650
NPYT152K350VY2N1F	0.0015	152	±10% (K)	10.0	9.0	4.0	7.5	0.6	1,000	1,300
NPYT152K350VY2N2F	0.0015	152	±10% (K)	13.0	11.0	5.0	10.0	0.6	500	500
NPYT152K350VY2N3F	0.0015	152	±10% (K)	18.0	11.0	5.0	15.0	0.6	500	450
NPYT182K350VY2N1F	0.0018	182	±10% (K)	10.0	9.0	4.0	7.5	0.6	1,000	1,300
NPYT182K350VY2N3F	0.0018	182	±10% (K)	13.0	11.0	5.0	10.0	0.6	500	500
NPYT222K350VY2N1F	0.0022	222	±10% (K)	10.5	11.0	5.0	7.5	0.6	1,000	1,300
NPYT222K350VY2N2F	0.0022	222	±10% (K)	13.0	11.0	5.0	10.0	0.6	500	500
NPYT222K350VY2N3F	0.0022	222	±10% (K)	18.0	11.0	5.0	15.0	0.6	500	450
NPYT272K350VY2N1F	0.0027	272	±10% (K)	10.5	11.0	5.0	7.5	0.6	1,000	1,300
NPYT272K350VY2N2F	0.0027	272	±10% (K)	13.0	11.0	5.0	10.0	0.6	500	500
NPYT272K350VY2N3F	0.0027	272	±10% (K)	18.0	11.0	5.0	15.0	0.6	500	450
NPYT332K350VY2N1F	0.0033	332	±10% (K)	10.5	11.0	5.0	7.5	0.6	1,000	1,300
NPYT332K350VY2N2F	0.0033	332	±10% (K)	13.0	11.0	5.0	10.0	0.6	500	500
NPYT332K350VY2N3F	0.0033	332	±10% (K)	18.0	11.0	5.0	15.0	0.6	500	450
NPYT392K350VY2N1F	0.0039	392	±10% (K)	10.5	11.0	5.0	7.5	0.6	1,000	1,300
NPYT392K350VY2N2F	0.0039	392	±10% (K)	13.0	11.0	5.0	10.0	0.6	500	500
NPYT392K350VY2N3F	0.0039	392	±10% (K)	18.0	11.0	5.0	15.0	0.6	500	450
NPYT472K350VY2N1F	0.0047	472	±10% (K)	10.5	11.0	5.0	7.5	0.6	1,000	1,300
NPYT472K350VY2N2F	0.0047	472	±10% (K)	13.0	11.0	5.0	10.0	0.6	500	500
NPYT472K350VY2N3F	0.0047	472	±10% (K)	18.0	11.0	5.0	15.0	0.6	500	450
NPYT562K350VY2N1F	0.0056	562	±10% (K)	10.5	11.0	5.0	7.5	0.6	1,000	1,300
NPYT562K350VY2N2F	0.0056	562	±10% (K)	13.0	11.0	5.0	10.0	0.6	500	500
NPYT562K350VY2N3F	0.0056	562	±10% (K)	18.0	11.0	5.0	15.0	0.6	500	450
NPYT682K350VY2N1F	0.0068	682	±10% (K)	13.0	12.0	6.0	10.0	0.6	500	450
NPYT682K350VY2N2F	0.0068	682	±10% (K)	18.0	11.0	5.0	15.0	0.6	500	450
NPYT822K350VY2N1F	0.0082	822	±10% (K)	13.0	12.0	6.0	10.0	0.6	500	450
NPYT822K350VY2N2F	0.0082	822	±10% (K)	18.0	11.0	5.0	15.0	0.6	500	450
NPYT103K350VY2N2F	0.01	103	±10% (K)	18.0	11.0	5.0	15.0	0.6	500	450
NPYT123K350VY2N2F	0.012	123	±10% (K)	18.0	11.0	5.0	15.0	0.6	500	450
NPYT153K350VY2N2F	0.015	153	±10% (K)	18.0	11.0	5.0	15.0	0.6	500	450
NPYT183M350VY2N1F	0.018	183	±20% (M)	18.0	11.0	5.0	15.0	0.6	500	450
NPYT223K350VY2N3F	0.022	223	±10% (K)	17.5	11.0	5.5	15.0	0.6	500	450
NPYT333K350VY2N3F	0.033	333	±10% (K)	25.0	14.5	6.0	22.5	0.8	200	N/A
NPYT393K350VY2N2F	0.039	393	±10% (K)	25.0	14.5	6.0	22.5	0.8	200	N/A

*Also available in ±5% (J) and ±20% (M) tolerance.

Performance Passives By Design

NIC Components Corp.
100 Baylis Road, Melville, NY 11747

NPYT Series

Radial Leaded Y1 & Y2

Interference Suppression Capacitors



Y2 STANDARD 350V VALUES AND CASE SIZE (mm)

Part Number	Cap. Value (μF)	Capacitance Code	Standard Tolerance*	L ±1.0	H ±1.0	T ±1.0	LS ±1.0	LD ±0.05	Packaging Quantity	
									Bulk	T&B
NPYT473K350VY2N2F	0.047	473	±10% (K)	25.0	14.5	6.0	22.5	0.8	200	N/A
NPYT563K350VY2N2F	0.056	563	±10% (K)	25.0	14.5	6.0	22.5	0.8	200	N/A
NPYT683M350VY2N3F	0.068	683	±20% (M)	25.0	14.5	6.0	22.5	0.8	200	N/A
NPYT683K350VY2N4F	0.068	683	±10% (K)	26.5	16.5	7.0	22.5	0.8	200	N/A
NPYT823K350VY2N3F	0.082	823	±10% (K)	26.5	16.5	7.0	22.5	0.8	200	N/A
NPYT104M350VY2N2F	0.1	104	±20% (M)	26.5	16.5	7.0	22.5	0.8	200	N/A
NPYT104K350VY2N3F	0.1	104	±10% (K)	32.0	18.0	9.0	27.5	0.8	100	N/A
NPYT124M350VY2N1F	0.12	124	±20% (M)	26.0	17.0	8.5	22.5	0.8	200	N/A
NPYT124K350VY2N2F	0.12	124	±10% (K)	32.0	18.0	9.0	27.5	0.8	100	N/A
NPYT154K350VY2N1F	0.15	154	±10% (K)	26.5	19.0	10.0	22.5	0.8	200	N/A
NPYT154K350VY2N2F	0.15	154	±10% (K)	32.0	18.0	9.0	27.5	0.8	100	N/A
NPYT184K350VY2N1F	0.18	184	±10% (K)	26.0	20.0	11.0	22.5	0.8	200	N/A
NPYT184K350VY2N2F	0.18	184	±10% (K)	31.4	19.5	10.8	27.5	0.8	100	N/A
NPYT224K350VY2N1F	0.22	224	±10% (K)	26.0	21.5	12.0	22.5	0.8	100	N/A
NPYT224K350VY2N2F	0.22	224	±10% (K)	30.0	21.0	11.8	27.5	0.8	100	N/A
NPYT274K350VY2N1F	0.27	274	±10% (K)	26.5	23.0	13.0	22.5	0.8	200	N/A
NPYT274M350VY2N2F	0.27	274	±20% (M)	31.4	19.5	10.8	27.5	0.8	100	N/A
NPYT274K350VY2N3F	0.27	274	±10% (K)	31.5	21.6	13.0	27.5	0.8	100	N/A
NPYT334K350VY2N1F	0.33	334	±10% (K)	26.0	25.0	15.0	22.5	0.8	200	N/A
NPYT334M350VY2N4F	0.33	334	±20% (M)	31.5	21.6	13.0	27.5	0.8	100	N/A
NPYT334K350VY2N5F	0.33	334	±10% (K)	31.0	25.0	14.0	27.5	0.8	100	N/A
NPYT334K350VY2N7F	0.33	334	±10% (K)	36.0	24.0	13.5	32.5	0.8	50	N/A
NPYT334K350VY2N8F	0.33	334	±10% (K)	42.0	22.0	12.0	37.5	1.0	50	N/A
NPYT394M350VY2N1F	0.39	394	±20% (M)	26.0	25.0	15.0	22.5	0.8	200	N/A
NPYT394K350VY2N4F	0.39	394	±10% (K)	32.0	28.0	14.0	27.5	0.8	100	N/A
NPYT394K350VY2N5F	0.39	394	±10% (K)	36.0	24.0	13.5	32.5	0.8	50	N/A
NPYT394K350VY2N7F	0.39	394	±10% (K)	41.0	24.0	13.0	37.5	1.0	50	N/A
NPYT394M350VY2N8F	0.39	394	±20% (M)	42.0	22.0	12.0	37.5	1.0	50	N/A
NPYT474M350VY2N3F	0.47	474	±20% (M)	32.0	28.0	14.0	27.5	0.8	100	N/A
NPYT474K350VY2N5F	0.47	474	±10% (K)	32.0	30.0	15.0	27.5	0.8	100	N/A
NPYT474K350VY2N7F	0.47	474	±10% (K)	37.0	26.5	16.0	32.5	0.8	50	N/A
NPYT474K350VY2N8F	0.47	474	±10% (K)	41.0	24.0	13.0	37.5	1.0	50	N/A
NPYT474M350VY2N9F	0.47	474	±20% (M)	42.0	22.0	12.0	37.5	1.0	50	N/A
NPYT564K350VY2N1F	0.56	564	±10% (K)	32.0	28.0	18.0	27.5	0.8	100	N/A
NPYT564K350VY2N4F	0.56	564	±10% (K)	37.0	28.0	18.0	32.5	0.8	50	N/A
NPYT564K350VY2N6F	0.56	564	±10% (K)	41.0	28.5	16.0	37.5	1.0	50	N/A
NPYT684M350VY2N1F	0.68	684	±20% (M)	31.0	33.0	18.0	27.5	0.8	100	N/A
NPYT684M350VY2N3F	0.68	684	±20% (M)	31.0	33.0	18.0	27.5	0.8	100	N/A
NPYT684K350VY2N5F	0.68	684	±10% (K)	35.5	31.0	20.0	32.5	0.8	50	N/A
NPYT684M350VY2N6F	0.68	684	±20% (M)	37.0	28.0	18.0	32.5	0.8	50	N/A
NPYT684M350VY2N8F	0.68	684	±20% (M)	41.0	28.5	16.0	37.5	1.0	50	N/A
NPYT684K350VY2N9F	0.68	684	±10% (K)	41.5	30.0	17.0	37.5	1.0	50	N/A
NPYT824M350VY2N1F	0.82	824	±20% (M)	31.0	33.0	18.0	27.5	0.8	100	N/A
NPYT824K350VY2N3F	0.82	824	±10% (K)	32.0	37.0	22.0	27.5	0.8	100	N/A
NPYT824K350VY2N5F	0.82	824	±10% (K)	37.0	33.5	22.0	32.5	0.8	50	N/A
NPYT824K350VY2N6F	0.82	824	±10% (K)	41.5	30.0	17.0	37.5	1.0	50	N/A
NPYT105K350VY2N1F	1.0	105	±10% (K)	32.0	37.0	22.0	27.5	0.8	100	N/A
NPYT105M350VY2N2F	1.0	105	±20% (M)	37.0	33.5	22.0	32.5	0.8	50	N/A
NPYT105M350VY2N5F	1.0	105	±20% (M)	41.5	30.0	17.0	37.5	1.0	50	N/A
NPYT105K350VY2N7F	1.0	105	±10% (K)	41.5	34.0	20.5	37.5	1.0	50	N/A
NPYT155K350VY2N1F	1.5	155	±10% (K)	41.5	41.0	27.5	37.5	1.0	50	N/A
NPYT185K350VY2N2F	1.8	185	±10% (K)	41.5	45.0	30.0	37.5	0.8	50	N/A
NPYT205K350VY2N1F	2.0	205	±10% (K)	41.5	45.0	30.0	37.5	1.0	50	N/A

*Also available in ±5% (J) and ±20% (M) tolerance.

Performance Passives By Design

NIC Components Corp.
100 Baylis Road, Melville, NY 11747

NPYT Series

Radial Leaded Y1 & Y2

Interference Suppression Capacitors



Y2 STANDARD 500V VALUES AND CASE SIZE (mm)

Part Number	Cap. Value (µF)	Capacitance Code	Standard Tolerance*	L	H	T	LS	LD	Packaging Quantity	
				±1.0	±1.0	±1.0	±1.0	±0.05	Bulk	T&B
NPYT471K500VY2N1F	0.00047	471	±10% (K)	10.0	9.0	4.0	7.5	0.6	1,000	1,300
NPYT471K500VY2N2F	0.00047	471	±10% (K)	13.0	11.0	5.0	10.0	0.6	500	500
NPYT471K500VY2N3F	0.00047	471	±10% (K)	18.0	11.0	5.0	15.0	0.6	500	450
NPYT561K500VY2N1F	0.00056	561	±10% (K)	10.0	9.0	4.0	7.5	0.6	1,000	1,300
NPYT561K500VY2N2F	0.00056	561	±10% (K)	13.0	11.0	5.0	10.0	0.6	500	500
NPYT561K500VY2N3F	0.00056	561	±10% (K)	18.0	11.0	5.0	15.0	0.6	500	450
NPYT681K500VY2N1F	0.00068	681	±10% (K)	10.0	9.0	4.0	7.5	0.6	1,000	1,300
NPYT681K500VY2N2F	0.00068	681	±10% (K)	13.0	11.0	5.0	10.0	0.6	500	500
NPYT681K500VY2N3F	0.00068	681	±10% (K)	18.0	11.0	5.0	15.0	0.6	500	450
NPYT821K500VY2N1F	0.00082	821	±10% (K)	10.0	9.0	4.0	7.5	0.6	1,000	1,300
NPYT821K500VY2N2F	0.00082	821	±10% (K)	13.0	11.0	5.0	10.0	0.6	500	500
NPYT821K500VY2N3F	0.00082	821	±10% (K)	18.0	11.0	5.0	15.0	0.6	500	450
NPYT102K500VY2N1F	0.001	102	±10% (K)	10.0	9.0	4.0	7.5	0.6	1,000	1,300
NPYT102K500VY2N2F	0.001	102	±10% (K)	13.0	11.0	5.0	10.0	0.6	500	500
NPYT102K500VY2N3F	0.001	102	±10% (K)	18.0	11.0	5.0	15.0	0.6	500	450
NPYT122K500VY2N1F	0.0012	122	±10% (K)	10.0	9.0	4.0	7.5	0.6	1,000	1,300
NPYT122K500VY2N2F	0.0012	122	±10% (K)	13.0	11.0	5.0	10.0	0.6	500	650
NPYT152K500VY2N1F	0.0015	152	±10% (K)	10.0	9.0	4.0	7.5	0.6	1,000	1,300
NPYT152K500VY2N2F	0.0015	152	±10% (K)	13.0	11.0	5.0	10.0	0.6	500	500
NPYT152K500VY2N3F	0.0015	152	±10% (K)	18.0	11.0	5.0	15.0	0.6	500	450
NPYT182K500VY2N1F	0.0018	182	±10% (K)	10.0	9.0	4.0	7.5	0.6	1,000	1,300
NPYT182K500VY2N3F	0.0018	182	±10% (K)	13.0	11.0	5.0	10.0	0.6	500	500
NPYT222K500VY2N1F	0.0022	222	±10% (K)	10.5	11.0	5.0	7.5	0.6	1,000	1,300
NPYT222K500VY2N2F	0.0022	222	±10% (K)	13.0	11.0	5.0	10.0	0.6	500	500
NPYT222K500VY2N3F	0.0022	222	±10% (K)	18.0	11.0	5.0	15.0	0.6	500	450
NPYT272K500VY2N1F	0.0027	272	±10% (K)	10.5	11.0	5.0	7.5	0.6	1,000	1,300
NPYT272K500VY2N2F	0.0027	272	±10% (K)	13.0	11.0	5.0	10.0	0.6	500	500
NPYT272K500VY2N3F	0.0027	272	±10% (K)	18.0	11.0	5.0	15.0	0.6	500	450
NPYT332K500VY2N1F	0.0033	332	±10% (K)	10.5	11.0	5.0	7.5	0.6	1,000	1,300
NPYT332K500VY2N2F	0.0033	332	±10% (K)	13.0	11.0	5.0	10.0	0.6	500	500
NPYT332K500VY2N3F	0.0033	332	±10% (K)	18.0	11.0	5.0	15.0	0.6	500	450
NPYT392K500VY2N1F	0.0039	392	±10% (K)	10.5	11.0	5.0	7.5	0.6	1,000	1,300
NPYT392K500VY2N2F	0.0039	392	±10% (K)	13.0	11.0	5.0	10.0	0.6	500	500
NPYT392K500VY2N3F	0.0039	392	±10% (K)	18.0	11.0	5.0	15.0	0.6	500	450
NPYT472K500VY2N1F	0.0047	472	±10% (K)	10.5	11.0	5.0	7.5	0.6	1,000	1,300
NPYT472K500VY2N2F	0.0047	472	±10% (K)	13.0	11.0	5.0	10.0	0.6	500	500
NPYT472K500VY2N3F	0.0047	472	±10% (K)	18.0	11.0	5.0	15.0	0.6	500	450
NPYT562K500VY2N1F	0.0056	562	±10% (K)	10.5	11.0	5.0	7.5	0.6	1,000	1,300
NPYT562K500VY2N2F	0.0056	562	±10% (K)	13.0	11.0	5.0	10.0	0.6	500	500
NPYT562K500VY2N3F	0.0056	562	±10% (K)	18.0	11.0	5.0	15.0	0.6	500	450
NPYT682K500VY2N1F	0.0068	682	±10% (K)	13.0	12.0	6.0	10.0	0.6	500	450
NPYT682K500VY2N2F	0.0068	682	±10% (K)	18.0	11.0	5.0	15.0	0.6	500	450
NPYT822K500VY2N1F	0.0082	822	±10% (K)	13.0	12.0	6.0	10.0	0.6	500	450
NPYT822K500VY2N2F	0.0082	822	±10% (K)	18.0	11.0	5.0	15.0	0.6	500	450
NPYT103K500VY2N2F	0.01	103	±10% (K)	18.0	11.0	5.0	15.0	0.6	500	450
NPYT123K500VY2N2F	0.012	123	±10% (K)	18.0	11.0	5.0	15.0	0.6	500	450
NPYT153K500VY2N2F	0.015	153	±10% (K)	18.0	11.0	5.0	15.0	0.6	500	450
NPYT183M500VY2N1F	0.018	183	±20% (M)	18.0	11.0	5.0	15.0	0.6	500	450
NPYT223K500VY2N3F	0.022	223	±10% (K)	17.5	11.0	5.5	15.0	0.6	500	450
NPYT333K500VY2N3F	0.033	333	±10% (K)	25.0	14.5	6.0	22.5	0.8	200	N/A
NPYT393K500VY2N2F	0.039	393	±10% (K)	25.0	14.5	6.0	22.5	0.8	200	N/A

*Also available in ±5% (J) and ±20% (M) tolerance.

NPYT Series

Radial Leaded Y1 & Y2

Interference Suppression Capacitors



Y2 STANDARD 500V VALUES AND CASE SIZE (mm)

Part Number	Cap. Value (μF)	Capacitance Code	Standard Tolerance*	L ±1.0	H ±1.0	T ±1.0	LS ±1.0	LD ±0.05	Packaging Quantity	
									Bulk	T&B
NPYT473K500VY2N2F	0.047	473	±10% (K)	25.0	14.5	6.0	22.5	0.8	200	N/A
NPYT563K500VY2N2F	0.056	563	±10% (K)	25.0	14.5	6.0	22.5	0.8	200	N/A
NPYT683M500VY2N3F	0.068	683	±20% (M)	25.0	14.5	6.0	22.5	0.8	200	N/A
NPYT683K500VY2N4F	0.068	683	±10% (K)	26.5	16.5	7.0	22.5	0.8	200	N/A
NPYT823K500VY2N3F	0.082	823	±10% (K)	26.5	16.5	7.0	22.5	0.8	200	N/A
NPYT104M500VY2N2F	0.1	104	±20% (M)	26.5	16.5	7.0	22.5	0.8	200	N/A
NPYT104K500VY2N3F	0.1	104	±10% (K)	32.0	18.0	9.0	27.5	0.8	100	N/A
NPYT124M500VY2N1F	0.12	124	±20% (M)	26.0	17.0	8.5	22.5	0.8	200	N/A
NPYT124K500VY2N2F	0.12	124	±10% (K)	32.0	18.0	9.0	27.5	0.8	100	N/A
NPYT154K500VY2N1F	0.15	154	±10% (K)	26.5	19.0	10.0	22.5	0.8	200	N/A
NPYT154K500VY2N2F	0.15	154	±10% (K)	32.0	18.0	9.0	27.5	0.8	100	N/A
NPYT184K500VY2N1F	0.18	184	±10% (K)	26.0	20.0	11.0	22.5	0.8	200	N/A
NPYT184K500VY2N2F	0.18	184	±10% (K)	31.4	19.5	10.8	27.5	0.8	100	N/A
NPYT224K500VY2N1F	0.22	224	±10% (K)	26.0	21.5	12.0	22.5	0.8	200	N/A
NPYT224K500VY2N2F	0.22	224	±10% (K)	30.0	21.0	11.8	27.5	0.8	100	N/A
NPYT274K500VY2N1F	0.27	274	±10% (K)	26.5	23.0	13.0	22.5	0.8	200	N/A
NPYT274M500VY2N2F	0.27	274	±20% (M)	31.4	19.5	10.8	27.5	0.8	100	N/A
NPYT274K500VY2N3F	0.27	274	±10% (K)	31.5	21.6	13.0	27.5	0.8	100	N/A
NPYT334K500VY2N1F	0.33	334	±10% (K)	26.0	25.0	15.0	22.5	0.8	200	N/A
NPYT334M500VY2N4F	0.33	334	±20% (M)	31.5	21.6	13.0	27.5	0.8	100	N/A
NPYT334K500VY2N5F	0.33	334	±10% (K)	31.0	25.0	14.0	27.5	0.8	100	N/A
NPYT334K500VY2N7F	0.33	334	±10% (K)	36.0	24.0	13.5	32.5	0.8	50	N/A
NPYT334K500VY2N8F	0.33	334	±10% (K)	42.0	22.0	12.0	37.5	1.0	50	N/A
NPYT394M500VY2N1F	0.39	394	±20% (M)	26.0	25.0	15.0	22.5	0.8	200	N/A
NPYT394K500VY2N4F	0.39	394	±10% (K)	32.0	28.0	14.0	27.5	0.8	100	N/A
NPYT394K500VY2N5F	0.39	394	±10% (K)	36.0	24.0	13.5	32.5	0.8	50	N/A
NPYT394K500VY2N7F	0.39	394	±10% (K)	41.0	24.0	13.0	37.5	1.0	50	N/A
NPYT394M500VY2N8F	0.39	394	±20% (M)	42.0	22.0	12.0	37.5	1.0	50	N/A
NPYT474M500VY2N3F	0.47	474	±20% (M)	32.0	28.0	14.0	27.5	0.8	100	N/A
NPYT474K500VY2N5F	0.47	474	±10% (K)	32.0	30.0	15.0	27.5	0.8	100	N/A
NPYT474K500VY2N7F	0.47	474	±10% (K)	37.0	26.5	16.0	32.5	0.8	50	N/A
NPYT474K500VY2N8F	0.47	474	±10% (K)	41.0	24.0	13.0	37.5	1.0	50	N/A
NPYT474M500VY2N9F	0.47	474	±20% (M)	42.0	22.0	12.0	37.5	1.0	50	N/A
NPYT564K500VY2N1F	0.56	564	±10% (K)	32.0	28.0	18.0	27.5	0.8	100	N/A
NPYT564K500VY2N4F	0.56	564	±10% (K)	37.0	28.0	18.0	32.5	0.8	50	N/A
NPYT564K500VY2N6F	0.56	564	±10% (K)	41.0	28.5	16.0	37.5	1.0	50	N/A
NPYT684M500VY2N1F	0.68	684	±20% (M)	31.0	33.0	18.0	27.5	0.8	100	N/A
NPYT684M500VY2N3F	0.68	684	±20% (M)	31.0	33.0	18.0	27.5	0.8	100	N/A
NPYT684K500VY2N5F	0.68	684	±10% (K)	35.5	31.0	20.0	32.5	0.8	50	N/A
NPYT684M500VY2N6F	0.68	684	±20% (M)	37.0	28.0	18.0	32.5	0.8	50	N/A
NPYT684M500VY2N8F	0.68	684	±20% (M)	41.0	28.5	16.0	37.5	1.0	50	N/A
NPYT684K500VY2N9F	0.68	684	±10% (K)	41.5	30.0	17.0	37.5	1.0	50	N/A
NPYT824M500VY2N1F	0.82	824	±20% (M)	31.0	33.0	18.0	27.5	0.8	100	N/A
NPYT824K500VY2N3F	0.82	824	±10% (K)	32.0	37.0	22.0	27.5	0.8	100	N/A
NPYT824K500VY2N5F	0.82	824	±10% (K)	37.0	33.5	22.0	32.5	0.8	50	N/A
NPYT824K500VY2N6F	0.82	824	±10% (K)	41.5	30.0	17.0	37.5	1.0	50	N/A
NPYT105K500VY2N1F	1.0	105	±10% (K)	32.0	37.0	22.0	27.5	0.8	100	N/A
NPYT105M500VY2N2F	1.0	105	±20% (M)	37.0	33.5	22.0	32.5	0.8	50	N/A
NPYT105M500VY2N5F	1.0	105	±20% (M)	41.5	30.0	17.0	37.5	1.0	200	N/A
NPYT105K500VY2N7F	1.0	105	±10% (K)	41.5	34.0	20.5	37.5	1.0	50	N/A
NPYT155K500VY2N1F	1.5	155	±10% (K)	41.5	41.0	27.5	37.5	1.0	50	N/A
NPYT185K500VY2N2F	1.8	185	±10% (K)	41.5	45.0	30.0	37.5	0.8	50	N/A
NPYT205K500VY2N1F	2.0	205	±10% (K)	41.5	45.0	30.0	37.5	1.0	50	N/A

*Also available in ±5% (J) and ±20% (M) tolerance.

Performance Passives By Design

NIC Components Corp.
100 Baylis Road, Melville, NY 11747

NPYT Series

Radial Leaded Y1 & Y2

Interference Suppression Capacitors



Y1 STANDARD VALUES AND CASE SIZE (mm)

Part Number	Cap. Value (pF)	Capacitance Code	Standard Tolerance*	L ±1.0	H ±1.0	T ±1.0	LS ±1.0	LD ±0.05	Packaging Quantity	
									Bulk	T&B
NPYT471K500VY1N1F	470	471	±10% (K)	18.0	11.0	5.0	15.0	0.6	500	450
NPYT561K500VY1N1F	560	561	±10% (K)	18.0	11.0	5.0	15.0	0.6	500	450
NPYT681K500VY1N1F	680	681	±10% (K)	18.0	11.0	5.0	15.0	0.6	500	450
NPYT102K500VY1N1F	1000	102	±10% (K)	18.0	11.0	5.0	15.0	0.6	500	450
NPYT122K500VY1N1F	1200	122	±10% (K)	18.0	11.0	5.0	15.0	0.6	500	450
NPYT152K500VY1N1F	1500	152	±10% (K)	18.0	11.0	5.0	15.0	0.6	500	450
NPYT182K500VY1N1F	1800	182	±10% (K)	18.0	12.0	6.0	15.0	0.8	500	400
NPYT202K500VY1N1F	2000	202	±10% (K)	18.0	12.0	6.0	15.0	0.8	500	400
NPYT222K500VY1N1F	2200	222	±10% (K)	18.0	12.0	6.0	15.0	0.8	500	400
NPYT252K500VY1N1F	2500	252	±10% (K)	18.0	12.0	6.0	15.0	0.8	500	400
NPYT272K500VY1N1F	2700	272	±10% (K)	18.0	13.5	7.5	15.0	0.8	500	300
NPYT282K500VY1N1F	2800	282	±10% (K)	18.0	13.5	7.5	15.0	0.8	500	300
NPYT332K500VY1N1F	3300	332	±10% (K)	18.0	13.5	7.5	15.0	0.8	500	300
NPYT392K500VY1N1F	3900	392	±10% (K)	18.0	13.5	7.5	15.0	0.8	500	300
NPYT402K500VY1N1F	4000	402	±10% (K)	18.0	13.5	7.5	15.0	0.8	500	300
NPYT472K500VY1N1F	4700	472	±10% (K)	18.0	13.5	7.5	15.0	0.8	500	300
NPYT502K500VY1N1F	5000	502	±10% (K)	18.0	14.5	8.5	15.0	0.8	500	250
NPYT562K500VY1N1F	5600	562	±10% (K)	18.0	14.5	8.5	15.0	0.8	500	250
NPYT562K500VY1N2F	5600	562	±10% (K)	25.0	14.5	6.0	22.5	0.8	200	N/A
NPYT682K500VY1N1F	6800	682	±10% (K)	18.0	16.0	10.0	15.0	0.8	200	200
NPYT682K500VY1N2F	6800	682	±10% (K)	26.5	16.5	7.0	22.5	0.8	200	N/A
NPYT822K500VY1N1F	8200	822	±10% (K)	18.0	18.5	11.0	15.0	0.8	200	200
NPYT822K500VY1N2F	8200	822	±10% (K)	26.0	17.0	8.5	22.5	0.8	200	N/A
NPYT103K500VY1N1F	10000	103	±10% (K)	18.0	18.5	11.0	15.0	0.8	200	200
NPYT103K500VY1N2F	10000	103	±10% (K)	26.0	17.0	8.5	22.5	0.8	200	N/A
NPYT123K500VY1N1F	12000	123	±10% (K)	26.5	19.0	10.0	22.5	0.8	200	N/A
NPYT153K500VY1N1F	15000	153	±10% (K)	26.5	19.0	10.0	22.5	0.8	200	N/A
NPYT183K500VY1N1F	18000	183	±10% (K)	26.0	20.0	11.0	22.5	0.8	200	N/A
NPYT223K500VY1N1F	22000	223	±10% (K)	26.0	22.0	12.0	22.5	0.8	200	N/A
NPYT223K500VY1N2F	22000	223	±10% (K)	32.0	20.0	11.0	27.5	0.8	100	N/A
NPYT273K500VY1N1F	27000	273	±10% (K)	31.5	21.6	13.0	27.5	0.8	100	N/A
NPYT333K500VY1N1F	33000	333	±10% (K)	31.5	21.6	13.0	27.5	0.8	100	N/A
NPYT473K500VY1N1F	47000	473	±10% (K)	32.0	28.0	14.0	27.5	0.8	100	N/A
NPYT683K500VY1N1F	68000	683	±10% (K)	32.0	28.0	18.0	27.5	0.8	100	N/A
NPYT823K500VY1N1F	82000	823	±10% (K)	31.0	31.0	22.0	27.5	0.8	100	N/A
NPYT104M500VY1N1F	100000	104	±20% (M)	31.0	31.0	22.0	27.5	0.8	100	N/A
NPYT104K500VY1N3F	100000	104	±10% (K)	32.0	37.0	22.0	27.5	0.8	100	N/A

*Also available in ±5% (J) and ±20% (M) tolerance.

NPYT Series

Radial Leaded Y1 & Y2

Interference Suppression Capacitors



ENVIRONMENTAL CHARACTERISTICS

Item	Test Method	Standard
Endurance	+110°C±2°C, 170% of RV for 1,000 hours (Voltage applied through 47Ω ± 5% resistor, every hour voltage is increased to 1,000Vrms for 0.1 seconds).	Physical: No remarkable physical Capacitance: Within ±10% of initial measured value DF: 0.8% max. IR ≥ 50% of specified value
Moisture Resistance	+40°C±2°C, Rated Voltage, 87% ~ 93% RH, 500 hours. (Part stabilized at room temperature for 1.5 ± 0.5 hours before taking measurements)	Physical: No remarkable physical Capacitance: Within ±5% of initial measured value DF: ≤ 0.2%, IR ≥ 50% of specified value
Temperature Cycling	A total of 5 cycles. Each cycle includes: 1. +20 ± 2°C for 3 minutes 2. -40 ± 3°C for 30 minutes 3. +20 ± 2°C for 3 minutes 4. +110 ± 3°C for 30 minutes 5. +20 ± 2°C for 3 minutes After test allow parts to be stabilized at room temperature for 1.5 ± 0.5 hours before taking measurements.	Physical: No remarkable physical Capacitance: Within ±5% of initial measured value DF: ≤ 0.2%, IR ≥ 50% of specified value
Resistance to Dry Heat	+110 ± 2°C for 16 +1/-0 hours	Physical: No remarkable physical Capacitance: Within ±5% of initial measured value DF: ≤ 0.2%, IR ≥ 50% of specified value
Resistance to Cold	-40°C ± 3°C for 2 hours ± 1 hours	Physical: No remarkable physical Capacitance: Within ±5% of initial measured value DF: ≤ 0.2%, IR ≥ 50% of specified value
Resistance to Soldering Heat	Preheat: +100°C ~ +120°C (60 seconds max). Ramp-up rate: 3°C per second max. Peak soldering temperature: +260 ± 5°C for 5 seconds max. Immersion depth: 4.8mm max from base of component (Part stabilized at room temperature for 1.5 ± 0.5 hours before taking measurements)	Physical: No remarkable physical Capacitance: Within ±5% of initial measured value DF: ≤ 0.2%, IR ≥ 50% of specified value
Vibration	Frequency: 10-55-10Hz Magnitude: 1.5mm in X, Y and Z directions Duration: 2 +1/-0 hours in each direction	No short/open circuit and stable connection
Terminal Strength	Apply 1.0Kg of force for 10 ± 1 seconds to the terminal in the axial direction away from the body of the part.	No abnormalities
Bending Strength	Apply 0.5Kg of force for 2 cycles. Each cycle includes 90° once, return to original position for 2 ~ 3 seconds and then bend in the opposite direction.	No abnormalities

NPYT Series

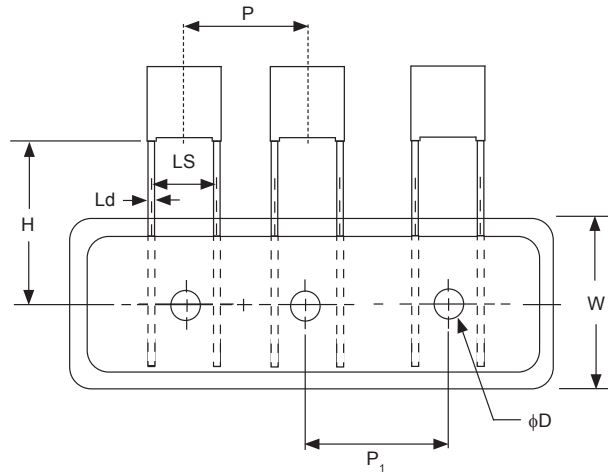
Radial Leaded Y1 & Y2

Interference Suppression Capacitors



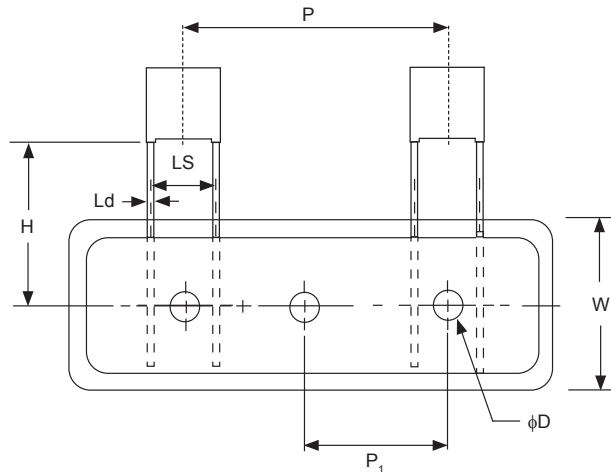
AMMO PACK (TB) TAPING DIMENSIONS 7.5mm LEAD SPACE

Item	Dimension (mm)
H	18.5 ± 1.0
Ld	0.60 ± 0.1
LS	7.5 ± 1.0
P	12.7 ± 1.5
P ₁	12.7 ± 0.3
W	18.0 ± 1.0
φD ₁	4.0 ± 0.3



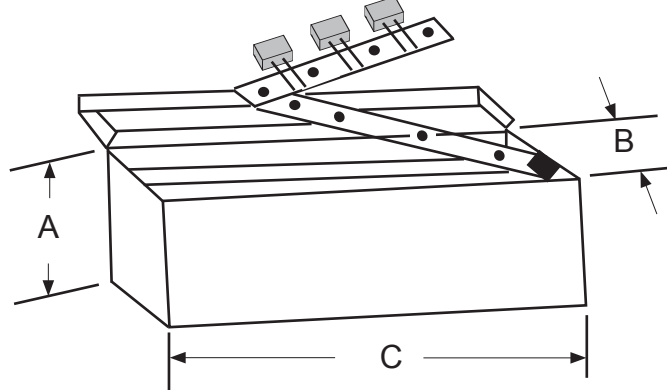
AMMO PACK (TB) TAPING DIMENSIONS 10 & 15mm LEAD SPACE

Item	Dimension (mm)	
H	18.5 ± 1.0	
Ld	0.60 ± 0.1	0.60/0.80 ± 0.1
LS	10.0 ± 1.0	15.0 ± 1.0
P	25.4 ± 1.5	
P ₁	12.7 ± 0.3	
W	18.0 ± 1.0	
φD ₁	4.0 ± 0.3	



Item	Dimension (mm)
A	270
B	50
C	330

AMMO PACK BOX DIMENSIONS



Performance Passives By Design

NIC Components Corp.
100 Baylis Road, Melville, NY 11747

Page 11
www.niccomp.com

Last Updated 04-17-2023. Specification subject to change without notice. Please check web site for latest information.