

This document is the property of Amphenol Corporation and is delivered on the express condition that it is not to be disclosed, reproduced or used, in whole or in part, for manufacture or sale by anyone other than Amphenol Corporation without the prior written consent of Amphenol Corporation. Amphenol or its subsidiaries shall not be held liable for any infringement in this document.

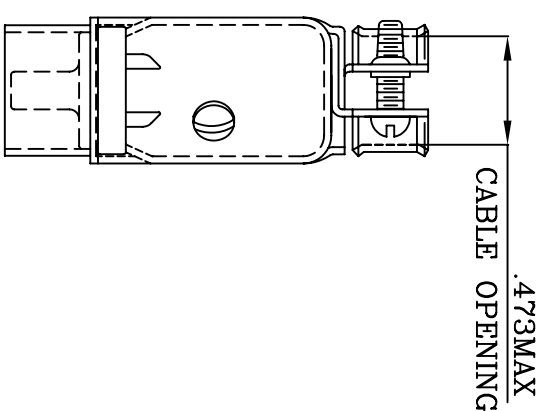
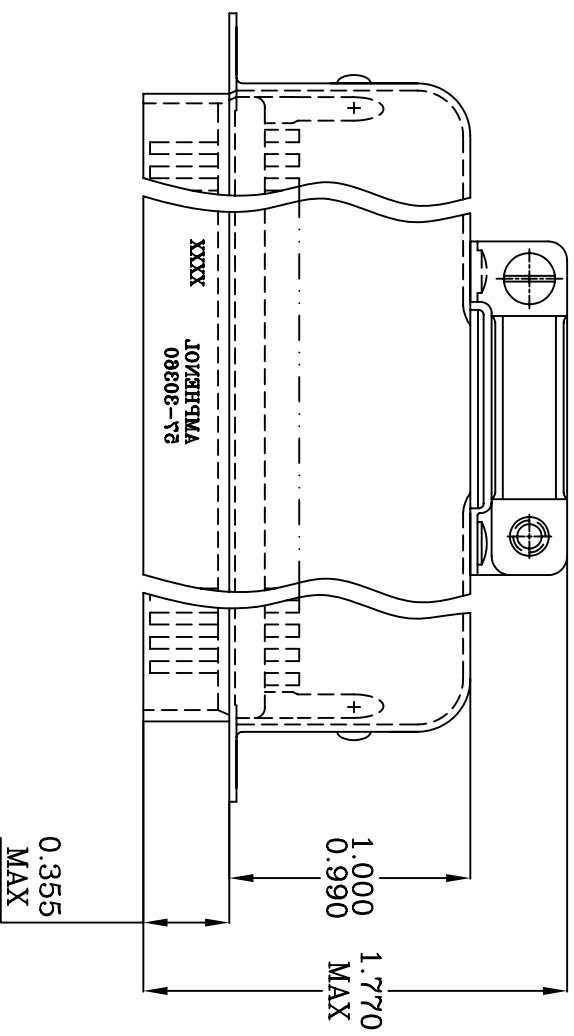
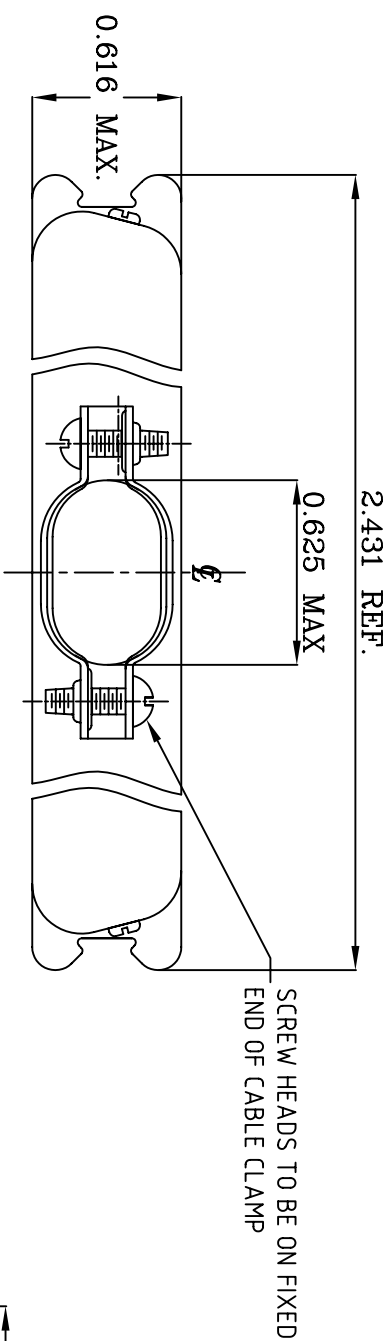
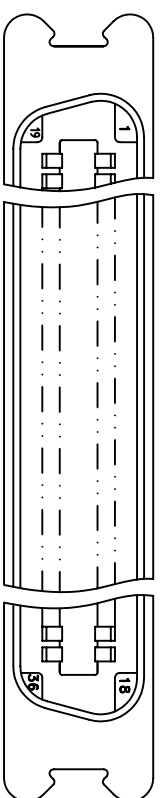


TABLE 1

CONNECTOR SIZES	AVERAGE MATING FORCE (POUNDS)
14	5
24	8
36	12
50	15
64	19



- SPECIFICATIONS:**
- 1) SOLDER CUP CONTACT: TO ACCOMMODATE 22-30 AWG SOLID AND 24-30 STRANDED CONNECTOR WIRES.
  - 2) DIELECTRIC: DIALLYL-PTHALATE PER MIL-M-14F TYPE MDG UL-94V0
  - 3) CONTACT MATERIAL: COPPER ALLOY
  - 4) CONTACT: 20 MICRO-INCHES MIN. GOLD MATING AREA: 3-5 MICRO-INCHES GOLD TERMINAL AREA: 50 MICRO-INCHES MIN. NICKEL UNDERPLATING ALL OVER.
  - 5) SHELL MATERIAL: ZINC PLATED STEEL.
  - 6) CURRENT CAPACITY: 5 AMPS/CONTACT
  - 7) VOLTAGE RATING: 700 VOLTS D.C. AT SEA LEVEL  
200 VOLTS D.C. AT 70,000 FEET
  - 8) INSULATION RESISTANCE: >5000 M OHM

- 9) DIELECTRIC WITHSTANDING VOLTAGE: 1200 VAC (RMS) AT SEA LEVEL
- 10) CONNECTOR MATING FORCE: REFER TO TABLE 1.
- 11) CONTACT RETENTION FORCE: 2 LBS MAX.
- 12) DURABILITY: 250 CYCLES MIN.
- 13) VIBRATION: NO INTERRUPTIONS < 1u SEC.
- 14) OPERATING TEMPERATURE: -55°C TO +105°C (-67°F TO +221°F)

**CUSTOMER INFORMATION DRAWING**

SYM		ECN		REVISIONS		
				DESCRIPTION	DATE	APPROVED
A	HK			PRELIMINARY RELEASE	12/05/02	Y.M.LEE

ITEM NO	PART OR IDENTIFICATION NO	PARTS LIST		NOMENCLATURE OR DESCRIPTION	QTY. REQ'D.
UNLESS OTHERWISE SPECIFIED TOLERANCES					
U.S.		METRIC			
X	+/-	0.020			
.XX	+/-	0.010			
.XXX	+/-	0.005			
FRACTIONS +/-					
ANGLES +/- °					
FOR MATERIALS AND FINISHES REMOVE SHARP EDGES					
DIMENSIONS		APPROVAL		DATE	
U.S.	INCHES	DRAWN	Y.M. LEE	12/05/02	
(METRIC)	(MM)	CHECKED		12/05/02	
ANGLE OF PROJECTION		DRAWING FILE : \DRAWING\157\G5730360.DWG			
TITLE		36 CONTACT SIZE MICRORIBBON CABLE MOUNT PLUG ASSEMBLY			
SIZE	DRAWING NO.	SCALE		SHEET 1 OF 1	
A3	C57-30360	NONE		REV. A	

**Amphenol**

Amphenol East Asia Limited  
Manufacturing Operation