

**PLEASE CHECK WWW.MOLEX.COM FOR LATEST PART INFORMATION**

**Part Number:** [5600200220](#)  
**Status:** **Active**  
**Overview:** [DuraClik Connector System](#)  
**Description:** DuraClik Wire-to-Board Header, Single Row, Vertical, 2 Circuits, Tin (Sn) Over Nickel, Natural

**Documents:**

<a href="#">3D Model</a>	<a href="#">Datasheet (PDF)</a>
<a href="#">3D Model (PDF)</a>	<a href="#">RoHS Certificate of Compliance (PDF)</a>
<a href="#">Drawing (PDF)</a>	

**Agency Certification**

UL E29179

**General**

Product Family	PCB Headers
Series	<a href="#">560020</a>
Application	Automotive, Signal, Wire-to-Board
Comments	The Operating Temperature Range when used with DuraClik series 502351 is -40°C to +105°C. It is -40°C to 125°C when used with DuraClik ISL series 560123 or TPA series 505151.
Overview	<a href="#">DuraClik Connector System</a>
Product Name	DuraClik
UPC	887191747071

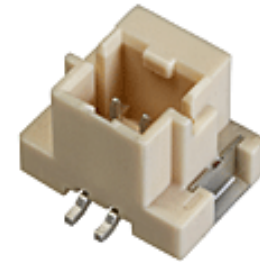
**Physical**

Breakaway	No
Circuits (Loaded)	2
Circuits (maximum)	2
Color - Resin	Natural
Durability (mating cycles max)	30
First Mate / Last Break	No
Flammability	SC-0
Glow-Wire Capable	No
Keying to Mating Part	None
Lock to Mating Part	Yes
Material - Metal	Copper Alloy
Material - Plating Mating	Tin
Material - Resin	Polyamide
Net Weight	0.506/g
Number of Rows	1
Orientation	Vertical
PCB Locator	No
PCB Retention	Yes
Packaging Type	Embossed Tape on Reel
Pitch - Mating Interface	2.00mm
Polarized to Mating Part	Yes
Polarized to PCB	Yes
Stackable	No
Temperature Range - Operating	-40° to +105°C, -40° to +125°C
Termination Interface: Style	Surface Mount

**Electrical**

Current - Maximum per Contact	3.0A
Voltage - Maximum	125V AC (RMS)/DC

**Solder Process Data**



*Series image - Reference only*

**EU ELV  
Compliant**

**EU RoHS  
Compliant**      **China RoHS**

**REACH SVHC**  
Not Contained Per -  
D(2020)4578-DC (25  
June 2020)

**Halogen-Free  
Status**

**Not Low-Halogen**

For more information, please visit [Contact US](#)

China ROHS	Green Image
ELV	Compliant
RoHS Phthalates	Not Contained

**Search Parts in this Series**

[560020](#) Series

**Mates With**

DuraClik Crimp Housings [502351](#) , [560123](#) , [505151](#)

Duration at Max. Process Temperature (seconds)	004
Lead-freeProcess Capability	REFLOW
Max. Cycles at Max. Process Temperature	001
Process Temperature max. C	255

**Material Info**

This document was generated on 10/30/2020

**PLEASE CHECK [WWW.MOLEX.COM](http://WWW.MOLEX.COM) FOR LATEST PART INFORMATION**