

REFER TO PAGE 5 FOR PART DIMENSIONS

NOTE: ALL MOUNTING DIMENSIONS ARE FOR REFERENCE ONLY. PLEASE VERIFY YOUR BATTERY LAYOUT PRIOR TO FABRICATION.

FIGURE 1

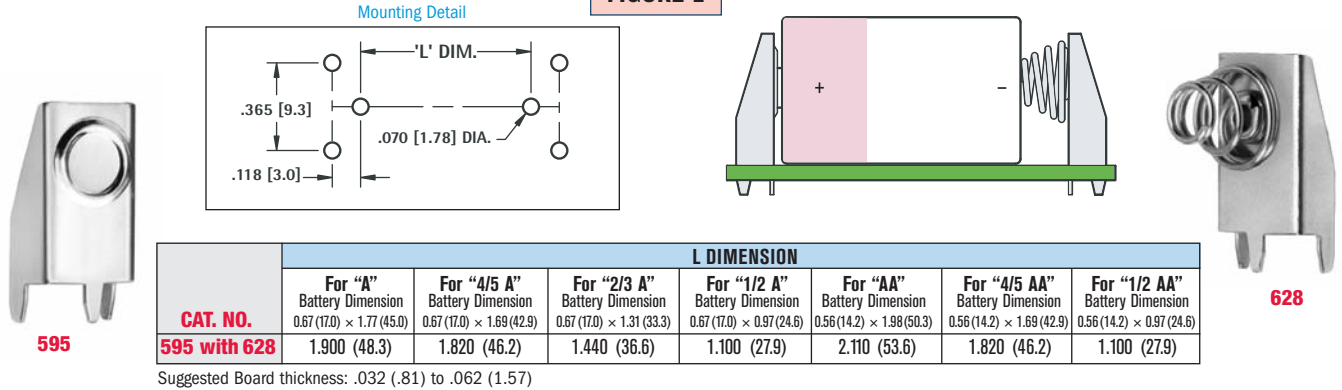


FIGURE 2

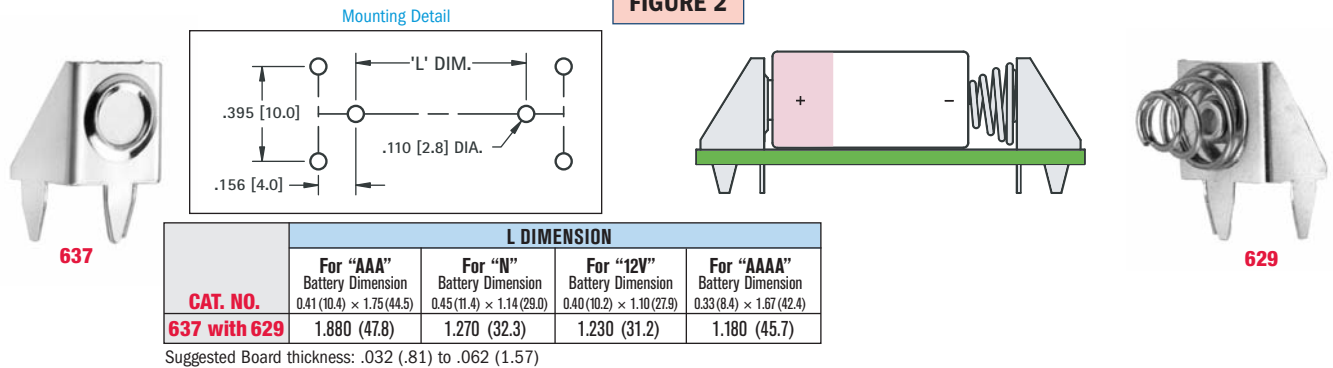


FIGURE 3

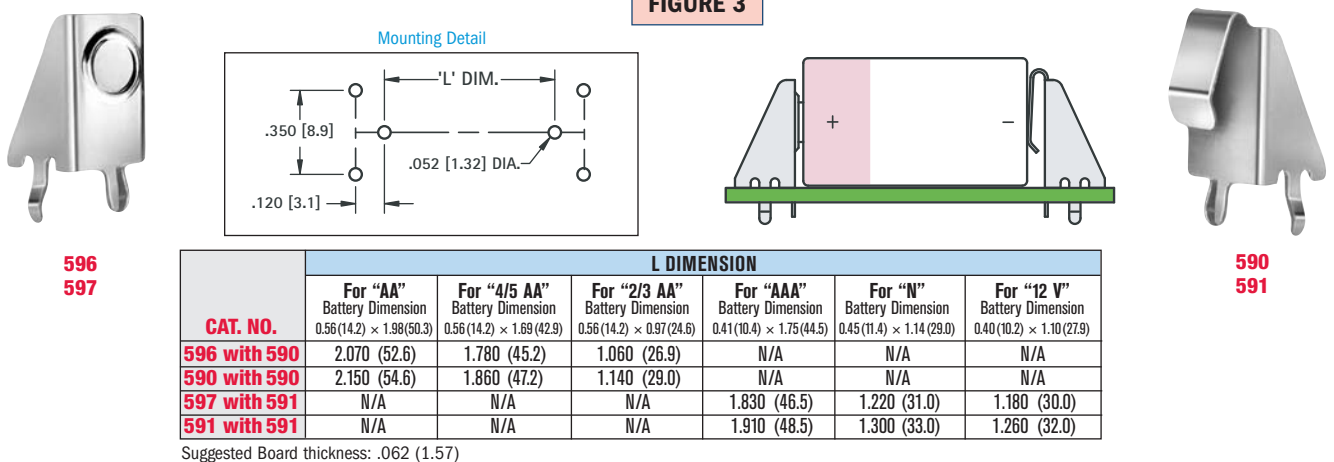
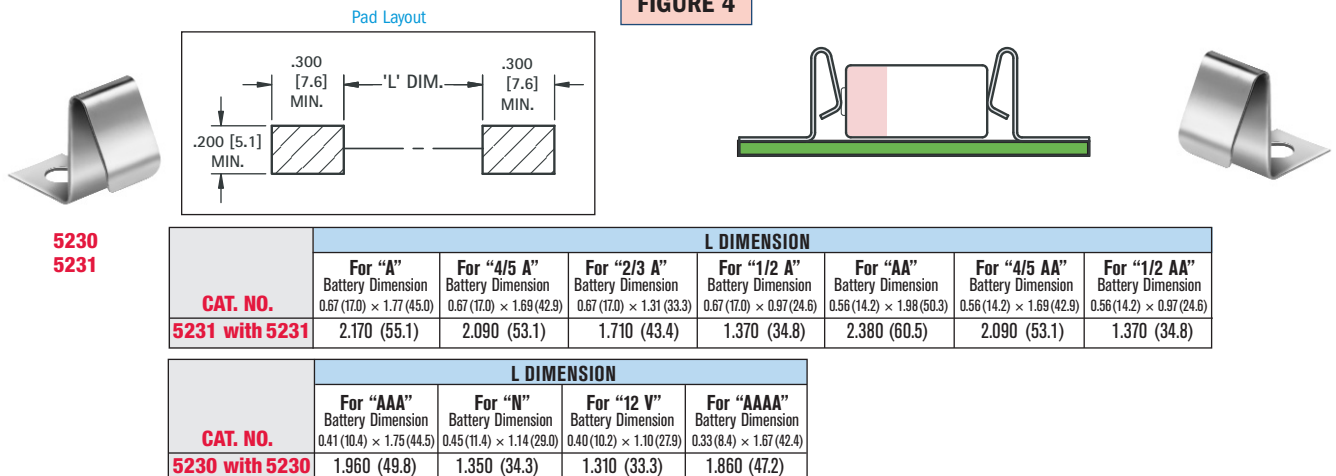


FIGURE 4



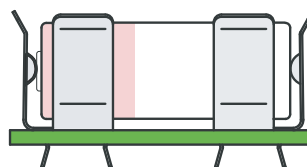
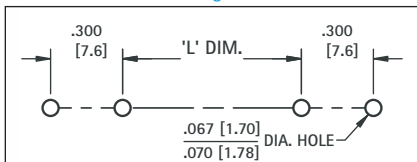
REFER TO PAGE 6 FOR PART DIMENSIONS

NOTE: ALL MOUNTING DIMENSIONS ARE FOR REFERENCE ONLY. VERIFY YOUR BATTERY LAYOUT PRIOR TO FABRICATION.

BATTERY CONTACTS LAYOUT & MOUNTING DETAILS

Mounting Detail

FIGURE 5



82
92
2915

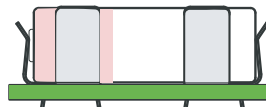
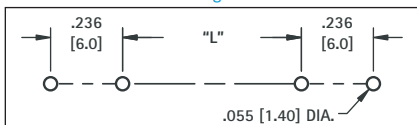
52

CAT. NO.	L DIMENSION		
	For "AAA" Battery Dimension	For "N" Battery Dimension	For "12 V" Battery Dimension
82 with 82	1.080 (27.4)	0.470 (11.9)	0.430 (10.9)

CAT. NO.	L DIMENSION						
	For "A" Battery Dimension	For "4/5 A" Battery Dimension	For "2/3 A" Battery Dimension	For "1/2 A" Battery Dimension	For "AA" Battery Dimension	For "4/5 AA" Battery Dimension	For "1/2 AA" Battery Dimension
52 with 52	1.110 (28.2)	1.030 (26.2)	0.650 (16.5)	0.310 (7.9)	1.320 (33.5)	1.030 (26.2)	0.310 (7.9)
92 with 92	1.110 (28.2)	1.030 (26.2)	0.650 (16.5)	0.310 (7.9)	1.320 (33.5)	1.030 (26.2)	0.310 (7.9)
2915 with 2915	1.110 (28.2)	1.030 (26.2)	0.650 (16.5)	0.310 (7.9)	1.320 (33.5)	1.030 (26.2)	0.310 (7.9)

Mounting Detail

FIGURE 6

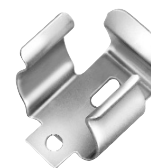
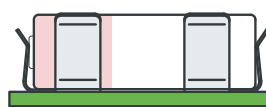
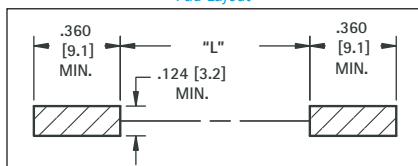
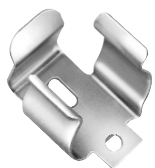


51

CAT. NO.	L DIMENSION
	For "AAAA" Battery Dimension
51 with 51	1.030 (26.2)

Pad Layout

FIGURE 7

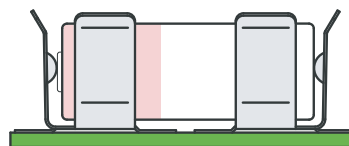
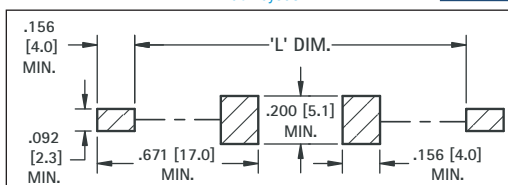


50

CAT. NO.	L DIMENSION
	For "AAAA" Battery Dimension
50 with 50	0.890 (22.6)

Pad Layout

FIGURE 8

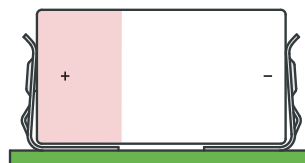
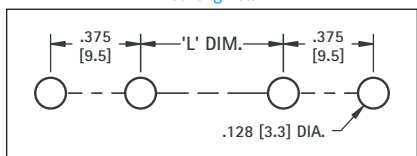


55

CAT. NO.	L DIMENSION		
	For "AAA" Battery Dimension	For "N" Battery Dimension	For "12V" Battery Dimension
55 with 55	1.800 (45.7)	1.200 (30.5)	1.150 (29.2)

Mounting Detail

FIGURE 9



206

207
208

CAT. NO.	L DIMENSION
	For "AA" Battery Dimension
206	1.100 (27.9)

CAT. NO.	L DIMENSION
	For "C" Battery Dimension
207	0.810 (20.6)

CAT. NO.	L DIMENSION
	For "D" Battery Dimension
208	1.250 (31.8)

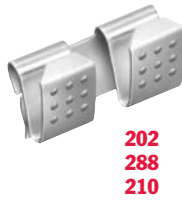
REFER TO PAGE 7 FOR PART DIMENSIONS

NOTE: ALL MOUNTING DIMENSIONS ARE FOR REFERENCE ONLY. PLEASE VERIFY YOUR BATTERY LAYOUT PRIOR TO FABRICATION.

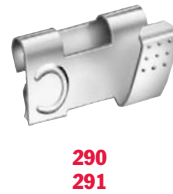
BATTERY CONTACTS LAYOUT & MOUNTING DETAILS



204
209



202
288
210



290
291



228
238



292
294

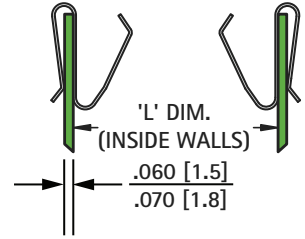


FIGURE 10

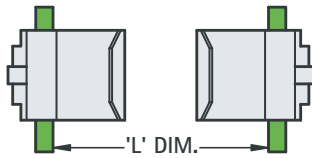


FIGURE 11

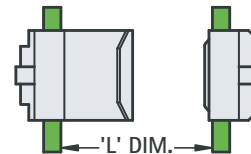


FIGURE 12

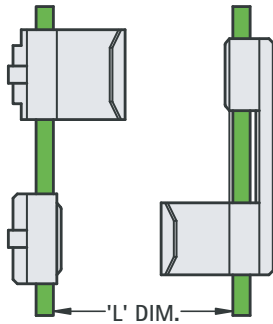


FIGURE 13

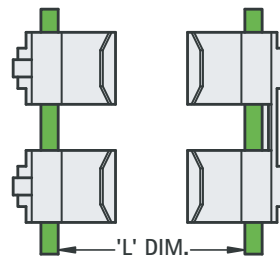
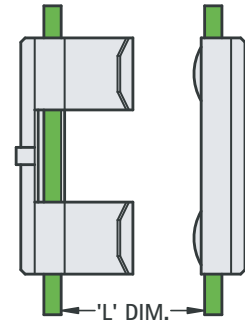


FIGURE 14



CAT. NO.	L DIMENSION				
	FIG. NO.	For "AAA" Battery Dimension 0.41 (10.4) × 1.75 (44.5)	For "AAAA" Battery Dimension 0.33 (8.4) × 1.57 (42.4)	For "N" Battery Dimension 0.45 (11.4) × 1.14 (29.0)	For "12 VOLT" Battery Dimension 0.4 (10.2) × 1.10 (27.9)
204 with 204	10	1.970 (50.0)	1.890 (48.0)	1.360 (34.5)	1.320 (33.5)
204 with 238	11	1.870 (47.5)	1.790 (45.5)	1.260 (32.0)	1.220 (31.0)
204 with 294	11	1.870 (47.5)	1.790 (45.5)	1.260 (32.0)	1.220 (31.0)
204(2) with 202	13	1.970 (50.0)	1.890 (48.0)	1.360 (34.5)	1.320 (33.5)
202 with 294	14	1.870 (47.5)	1.790 (45.5)	1.260 (32.0)	1.220 (31.0)

CAT. NO.	L DIMENSION							
	FIG. NO.	For "A" Battery Dimension 0.67 (17.0) × 1.77 (45.0)	For "4/5A" Battery Dimension 0.67 (17.0) × 1.69 (42.9)	For "2/3A" Battery Dimension 0.67 (17.0) × 1.31 (33.3)	For "1/2A" Battery Dimension 0.67 (17.0) × 0.97 (24.6)	For "AA" Battery Dimension 0.56 (14.2) × 1.98 (50.3)	For "4/5AA" Battery Dimension 0.56 (14.2) × 1.69 (42.9)	For "1/2AA" Battery Dimension 0.56 (14.2) × 0.97 (24.6)
209 with 209	10	2.060 (52.3)	1.980 (50.3)	1.600 (40.6)	1.260 (32.0)	2.270 (57.7)	1.980 (50.3)	1.260 (32.0)
209 with 228	11	1.920 (48.8)	1.840 (46.7)	1.460 (37.1)	1.120 (28.4)	2.130 (54.1)	1.840 (46.7)	1.120 (28.4)
209, 228 with 290	12	1.920 (48.8)	1.840 (46.7)	1.460 (37.1)	1.120 (28.4)	2.130 (54.1)	1.840 (46.7)	1.120 (28.4)
209, 228 with 291	12	1.920 (48.8)	1.840 (46.7)	1.460 (37.1)	1.120 (28.4)	2.130 (54.1)	1.840 (46.7)	1.120 (28.4)
209(2) with 288	13	2.060 (52.3)	1.980 (50.3)	1.600 (40.6)	1.260 (32.0)	2.270 (57.7)	1.980 (50.3)	1.260 (32.0)
209(2) with 210	13	2.060 (52.3)	1.980 (50.3)	1.600 (40.6)	1.260 (32.0)	2.270 (57.7)	1.980 (50.3)	1.260 (32.0)
210 with 292	14	1.930 (49.0)	1.850 (47.0)	1.470 (37.3)	1.130 (28.7)	2.140 (54.4)	1.850 (47.0)	1.130 (28.7)

Suggested wall thickness: .062 (1.57) through .078 (1.98)

FIGURE 15

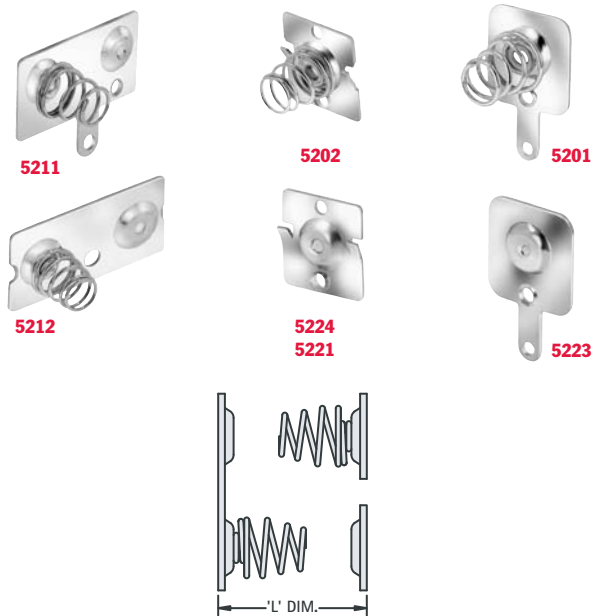


FIGURE 16



FIGURE 17



FIGURE 18

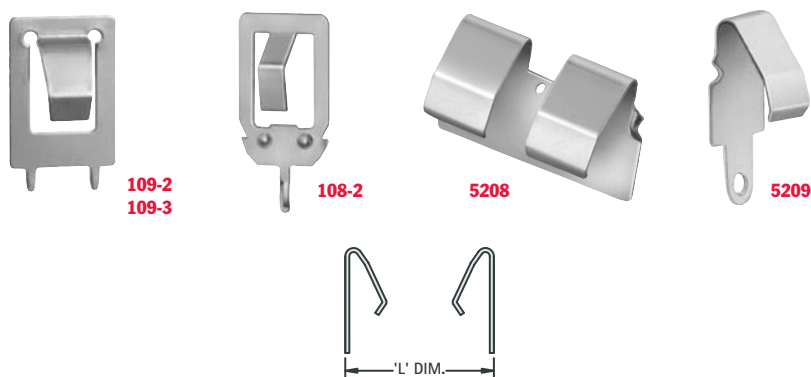
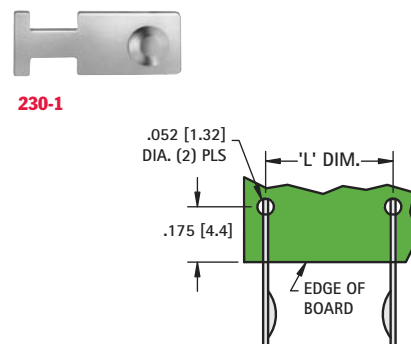


FIGURE 19



CAT. NO.	L DIMENSION								
	FIG. NO.	PAGE NO.	For "A" Battery Dimension 0.67 (17.0) × 1.77 (45.0)	For "4/5A" Battery Dimension 0.67 (17.0) × 1.69 (42.9)	For "2/3A" Battery Dimension 0.67 (17.0) × 1.31 (33.3)	For "1/2A" Battery Dimension 0.67 (17.0) × 0.97 (24.6)	For "AA" Battery Dimension 0.56 (14.2) × 1.98 (50.3)	For "4/5AA" Battery Dimension 0.56 (14.2) × 1.69 (42.9)	For "1/2AA" Battery Dimension 0.56 (14.2) × 0.97 (24.6)
5211 with 5201, 5223	15	8	2.050 (52.1)	1.970 (50.0)	1.590 (40.4)	1.250 (31.8)	2.260 (57.4)	1.970 (50.0)	1.250 (31.8)
5212 with 5221, 5222	15	8	2.050 (52.1)	1.970 (50.0)	1.590 (40.4)	1.250 (31.8)	2.260 (57.4)	1.970 (50.0)	1.250 (31.8)
5227 with 5228	16	8	2.050 (52.1)	1.970 (50.0)	1.590 (40.4)	1.250 (31.8)	2.260 (57.4)	1.970 (50.0)	1.250 (31.8)
5223 with 5201	17	8	2.050 (52.1)	1.970 (50.0)	1.590 (40.4)	1.250 (31.8)	2.260 (57.4)	1.970 (50.0)	1.250 (31.8)
5221 with 5222	17	8	2.050 (52.1)	1.970 (50.0)	1.590 (40.4)	1.250 (31.8)	2.260 (57.4)	1.970 (50.0)	1.250 (31.8)
5224 with 5202	17	8	2.030 (51.6)	1.950 (49.5)	1.570 (39.9)	1.230 (31.2)	2.240 (56.9)	1.950 (49.5)	1.230 (31.2)
5208 with 5209, 5209	18	9	2.130 (54.1)	2.050 (52.1)	1.670 (42.4)	1.330 (33.8)	2.340 (59.4)	2.050 (52.1)	1.330 (33.8)
108-2 with 108-2	18	9	2.010 (51.1)	1.930 (49.0)	1.550 (39.4)	1.210 (30.7)	2.220 (56.4)	1.930 (49.0)	1.210 (30.7)
109-2 with 109-2	18	9	2.010 (51.1)	1.930 (49.0)	1.550 (39.4)	1.210 (30.7)	2.220 (56.4)	1.930 (49.0)	1.210 (30.7)
109-3 with 109-3	18	9	2.010 (51.1)	1.930 (49.0)	1.550 (39.4)	1.210 (30.7)	2.220 (56.4)	1.930 (49.0)	1.210 (30.7)

CAT. NO.	L DIMENSION					
	FIG. NO.	PAGE NO.	For "AAA" Battery Dimension 0.41 (10.4) × 1.75 (44.5)	For "AAAA" Battery Dimension 0.33 (8.4) × 1.67 (42.4)	For "12 VOLT" Battery Dimension 0.40 (10.2) × 1.10 (27.9)	For "N" Battery Dimension 0.45 (11.4) × 1.14 (29.0)
5214 with 5203, 5225	15	9	1.980 (50.3)	1.900 (48.3)	1.330 (33.8)	1.370 (34.8)
5213 with 5203, 5225	15	9	1.980 (50.3)	1.900 (48.3)	1.330 (33.8)	1.370 (34.8)
5203 with 5225	17	9	1.980 (50.3)	1.900 (48.3)	1.330 (33.8)	1.370 (34.8)
5204 with 5226	17	9	1.980 (50.3)	1.900 (48.3)	1.330 (33.8)	1.370 (34.8)
108-2 with 108-2	18	9	1.990 (50.5)	1.910 (48.5)	1.340 (34.0)	1.380 (35.1)
230 with 230-1	19	9	1.730 (43.9)	1.670 (42.4)	1.100 (27.9)	1.140 (29.0)