

L1NK Connector System Product Family



The L1NK Connector System is a wire-to-board system that delivers up to 11.0A of current through 3 pitch sizes (2.50, 3.00 and 3.96mm) and offers superior design options for flexibility and efficient assembly

Features and Advantages



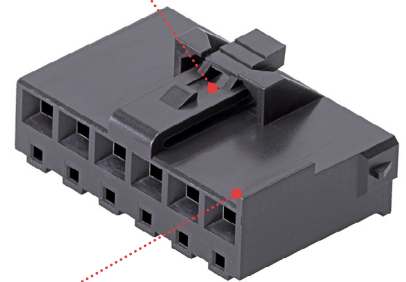
Reflow-capable header

Can withstand a 260°C reflow process



L1NK 396 Connector

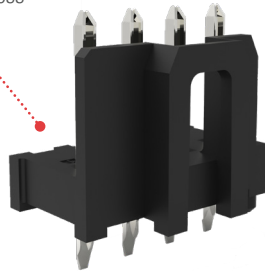
Positive-locking latch
Offers a clear audible click for connection assurance



Unique keying design
Prevents mis-mating

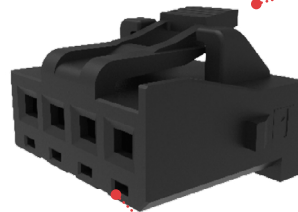


Reflow options available
Reduces labor costs, saving time and resources



L1NK 250 Connector

Positive-locking latch
Offers a clear audible click for connection assurance



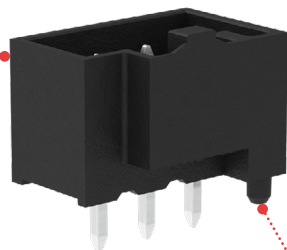
V-0/Glow Wire combination resin
Reduces the cost of materials and labor and allows customers to meet the European standard for electrical requirements



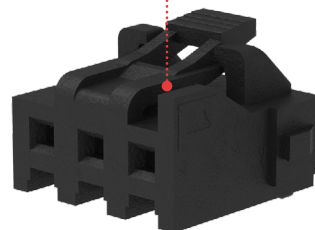
TPA
Prevents terminal back-out



Partially Shrouded Wall
Provides protection of the pins within



Unique keying design
Prevents mis-mating



Crush Peg
Provides stability of the connector onto the PCB and allows assembly operators to align the connector onto the PCB

L1NK 300 Connector

L1NK 250 Connectors can provide a direct drop-in replacement on a PCB for JST – XA products.
L1NK 396 Connectors can provide a direct drop-in replacement on a PCB for JST – VH products.

For new low-power, wire-to-board applications, L1NK connectors are reliable alternatives to other manufacturers' products. L1NK 250 Connectors are designed to have a PCB layout compatible with JST's XA series, and L1NK 396 Connectors are designed to have a PCB layout compatible with JST's VH series; however, L1NK receptacles will not mate with JST's or any other manufacturers' products.

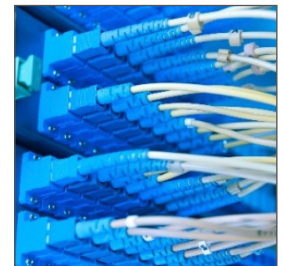
L1NK Connector System Product Family

Markets and Applications

Consumer – General Market	Telecommunications/Networking	Automotive
Washers and dryers	Routers and switches	Harness manufacturers
Freezers	Servers	Non-sealed applications
Gaming machines	Storage	Inside devices
Printers	Medical	Charging stations
Refrigerators	Diagnostic equipment	Industrial
Scanners	Patient monitors	Food and beverage
Security systems		Assembly line equipment
Vending machines		
White goods		



Appliances



Routers

Specifications

REFERENCE INFORMATION

Packaging: Bag, Tray, Reel
 UL File No.: TBD
 CSA File No.: TBD
 Mates With: L1NK 250 components only
 Header series: 207843
 Receptacle series: 207841
 TPA Series: 207845
 Use with: **L1NK 250** components only
 Female terminal series: 35570
 Terminal Used:
 Series: 46626
 Designed In: Millimeters
 RoHS: Yes
 Series: 207458, 207459, 207478 and 207479

Halogen Free:
 Receptacle: No
 Header: Yes (Low Halogen)
 Glow Wire Capable: Yes
 Mates With: L1NK 396 components only
 Header Series: 207478, 207479
 Receptacle Series: 207458
 TPA Series: 207459
 Use With: **L1NK 396** components only
 Female Terminal Series: 35570
 Terminal Used:
 Series: 45570
 Designed In: Millimeters
 RoHS: Yes
 Series: 207458, 207459, 207478 and 207479

Halogen Free: Yes
 Compliant Series: 207478 and 207479
 Not compliant: 207458 and 207459
 Glow Wire Capable: Yes

PHYSICAL

Housing: VO/Glow Wire Combo
 Contact: Tin
 Plating: Tin
 PCB Thickness: 1.60mm
 Operating Temperature: -40 to +105°C

L1NK 250 (2.50MM)

ELECTRICAL

Voltage (max.): 250V AC (RMS) or DC
 Current (max.): 6.5A
 Contact Resistance (max.): 10 milliohms
 Dielectric Withstanding Voltage: 1500VAC
 Insulation Resistance (min.): 1000 Megohms

MECHANICAL

Pitch: 2.50mm
 Contact Insertion Force (max.): 15N (3.3 lbf)
 Contact Retention to Housing (min.): 35.6N
 Insertion Force to PCB: NA (Test not conducted)
 Minimum Retention Force: 7.5N
 Mating Force: 6N per circuit
 Un-mating Force: 0.5N per circuit
 Durability (max.): 25

L1NK 396 (3.96MM)

ELECTRICAL

Voltage (max.): 300V AC (RMS) or DC
 Current (max.): 11.0A
 Contact Resistance (max.): 10 milliohms
 Dielectric Withstanding Voltage: 1700VAC
 Insulation Resistance (min.): 1000 Megohms

MECHANICAL

Pitch: 3.96mm
 Contact Insertion Force (max.): 14.7N (3.3 lbf)
 Contact Retention to Housing (min.): 35.6N
 Insertion Force to PCB: 13.7N (3.1 lbf)
 Minimum retention force: 35.6N
 Mating Force: 10.7N per circuit
 Un-mating Force: 3.7N per circuit
 Durability (max.): 25

L1NK 300 (3.00MM)

ELECTRICAL

Voltage (max.): 250V
 Current (max.): 11.0A
 Contact Resistance: 10 milliohms
 Dielectric Withstanding Voltage: 1700VAC
 Insulation Resistance: 1000 Megohms

MECHANICAL

Contact Insertion Force: 14.7N (3.3 lbf)
 Contact Retention to Housing: 35.6N
 Insertion Force to PCB: 13.7N (3.1 lbf)
 Mating Force: 6.5N
 Unmating Force: 6.0N
 Durability (min.): 25

www.molex.com/link/L1NK.html

Molex is a registered trademark of Molex, LLC in the United States of America and may be registered in other countries; all other trademarks listed herein belong to their respective owners.