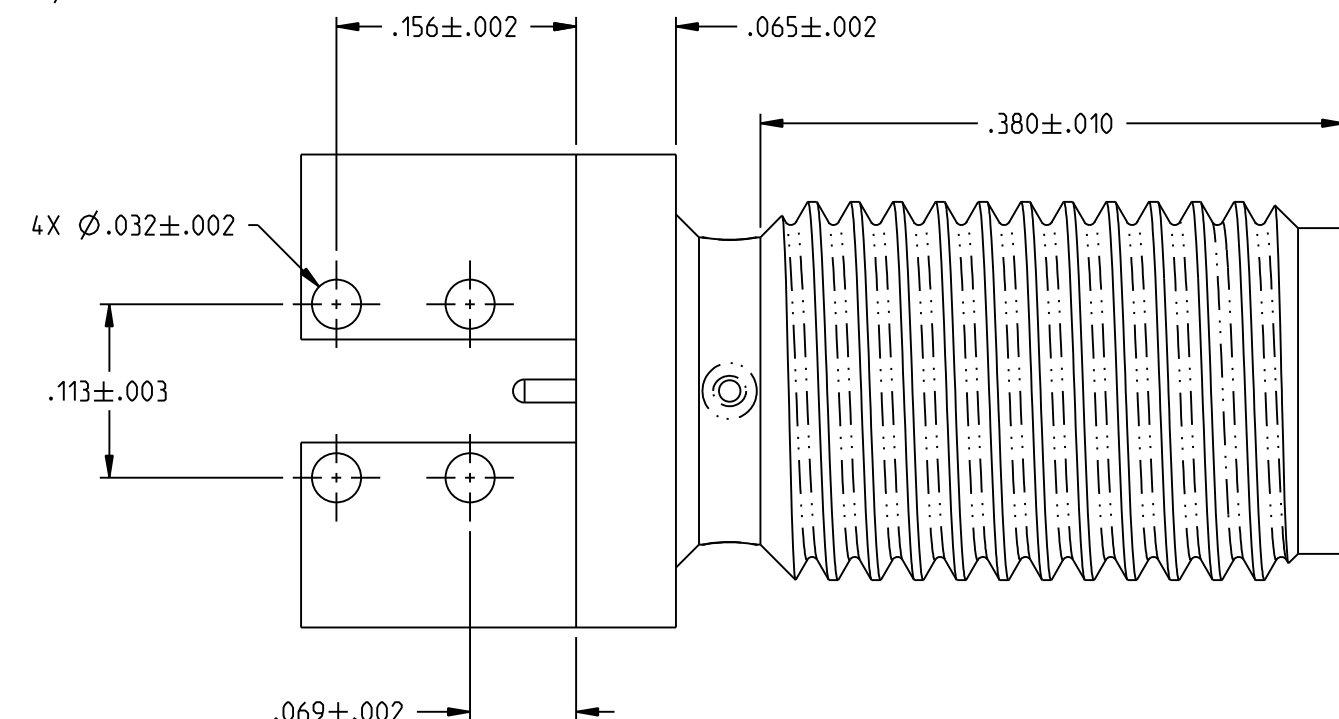


SECTION A-A



NOTES: UNLESS OTHERWISE SPECIFIED.

1. MATERIAL AND FINISH:

- 1.1 BODY: NICKEL PLATED BRASS
- 1.2 CONTACT: GOLD PLATED BERTLLIUM COPPER
- 1.3 INSULATOR: PTFE (TEFLON)

2. ELECTRICAL SPECIFICATIONS:

- 2.1 IMPEDANCE: 50 OHMS
- 2.2 FREQUENCY RANGE: 0 - 26.5 GHz
- 2.3 VSWR: DEPENDANT ON APPLICATION
- 2.4 WORKING VOLTAGE: 170 VRMS MAX AT SEA LEVEL
- 2.5 DIELECTRIC WITHSTANDING VOLTAGE: 500 VRMS MIN AT SEA LEVEL
- 2.6 INSULATION RESISTANCE: 1000 MEGOHMS MIN
- 2.7 CONTACT RESISTANCE:

CENTER CONTACT: INTIAL 3.0 MILLIOHM MAX, AFTER ENVIRONMENTAL 4.0 MILLIOHM MAX

OUTER CONDUCTOR: INITIAL 2.0 MILLIOHM MAX AFTER ENVIRONMENTAL N/A

- 2.8 CORONA LEVEL: 125 VOLTS MIN AT 70,000 FEET
- 2.9 RF HIGH POTENTIAL WITHSTANDING VOLTAGE: 335 VRMS AT 4 & 7 MHZ

3. MECHANICAL SPECIFICATIONS:

- 3.1 ENGAGE/DISENGAGE TORQUE: 2 INCH-POUNDS MAX
- 3.2 MATING TORQUE: 7-10 INCH-POUNDS WHEN BODY SUPPORTED WITH WRENCH 8 INCH POUNDS MAX UNSUPPORTED
- 3.3 CONTACT RETENTION: 6 LBS MIN AXIAL FORCE ON MATING END 4 IN-OZ MIN RADIAL TORQUE
- 3.4 DURABILITY: 500 CYCLES MIN

4. ENVIRONMENTAL:

(MEETS OR EXCEEDS THE APPLICABLE PARAGRAPH OF MIL-PRF-39012)

- 4.1 THERMAL SHOCK: MIL-STD-202, METHOD 107, CONDITION B, EXCEPT 115°C HIGH TEMP
- 4.2 OPERATING TEMPERATURE: -65°C TO 165°C
- 4.3 CORROSION: MIL-STD-202, METHOD 101, CONDITION B
- 4.4 SHOCK: MIL-STD-202, METHOD 213, CONDITION I
- 4.5 VIBRATION: MIL-STD-202, METHOD 204, CONDITION D
- 4.6 MOISTURE RESISTANCE: MIL-STD-202, METHOD 106

		JOHNSON	
	RoHS2 2011/65/EU	Title: JACK ASSEMBLY, HIGH FREQ END LAUNCH, SMA	
<small>This PROPRIETARY Document is property of Cinch Connectivity Solutions. It is confidential in nature, non-transferable, and issued with the clear understanding that it is not to be traced or copied without permission and is returnable upon demand.</small>	<small>UNLESS OTHERWISE SPECIFIED UNITS: INCH</small> .XX ± .02 .XXX ± .005 ANGLES ± 2°	Model No. 142-1721-851/860	Date 10/28/2016
<small>INTERPRET DRAWING IN ACCORDANCE WITH ASME Y14.5-2009.</small>	Size B	DO NOT SCALE DRAWING	Sheet 1 OF 1

Mouser Electronics

Authorized Distributor

Click to View Pricing, Inventory, Delivery & Lifecycle Information:

[Cinch Connectivity Solutions:](#)

[142-1721-851](#)