

LOCK SWITCH

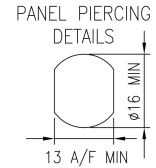
IRL IMPULSION LOCK SWITCH 2 & 3 POSITION

ELECTRICAL & MECHANICAL SPECIFICATION

Switch Rating:	1A @24V ac/dv	Life:	>10,000 Cycles
Proof Voltage:	750 Vac (Initial)	Lock Type:	5 Disc
Insulation Resistance:	>999MΩ @ 500Vdc (Initial)	Operating Temperature:	-20°C to +65°C
Contact Resistance:	<20mΩ (Initial)	Lock Housing:	Zinc Alloy Bright Cr Plated
Contact Material:	Brass CZ108, Ag Plated	Moulding Material:	Polyamide 6.6 G.F. V0 Rated

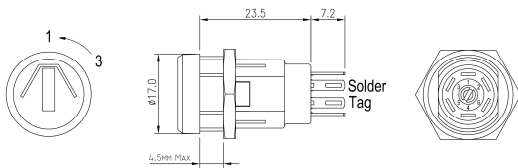
FEATURES

Spring return	Front assembly	2 keys per switch, up to 200 differ key combinations available
Double Pole DPST	Moulded bezel	Keys can be inserted either way up
Rear panel depth - <30mm	available	Master key versions to order
Single Pole SPDT	Made in UK	
Rear panel depth - <35mm		



DOUBLE POLE LOCK SWITCH

Parallel lock head 60° indexing Spring Return 2 Pole 2 Position

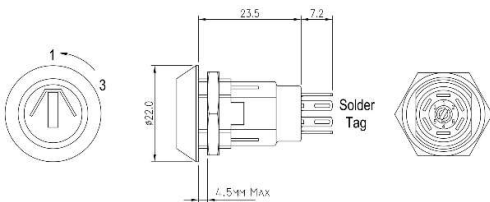


PARALLEL LOCK HEAD 60° INDEXING

BASIC PART No.	TOTAL MOVEMENT	INDEXING	KEY WITHDRAWAL POSITIONS	SWITCH CONFIGURATION
IRL-5-K	60°	60°	1 ONLY	

DOUBLE POLE LOCK SWITCH

Tapered lock head 60° indexing Spring Return 2 Pole 2 Position



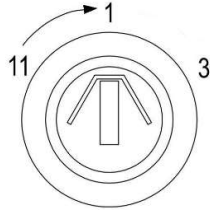
TAPERED LOCK HEAD 60° INDEXING

BASIC PART No.	TOTAL MOVEMENT	INDEXING	KEY WITHDRAWAL POSITIONS	SWITCH CONFIGURATION
IRL-5-M	60°	60°	1 ONLY	

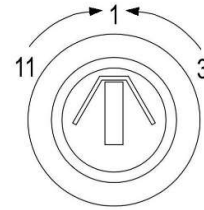
SINGLE POLE 3 POSITION

Available in three versions:-

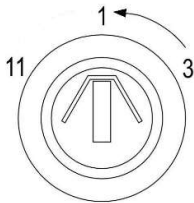
Type L - Left spring return with latching to the right.



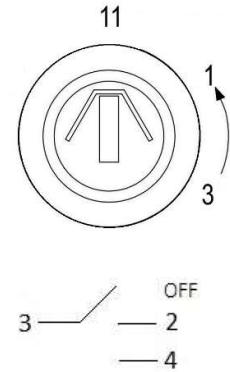
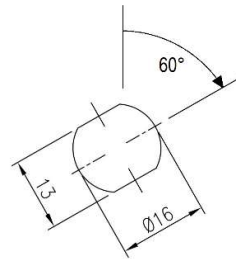
Type D - Double spring return.



Type R - Right spring return with latching to the left.

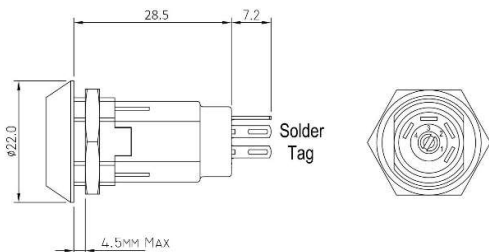


Type R Alternate mounting



SINGLE POLE LOCK SWITCH

Tapered lock head 60° indexing Spring Return 1 Pole 3 Position



TAPERED LOCK HEAD 60° INDEXING

BASIC PART No.	TOTAL MOVEMENT	INDEXING	KEY WITHDRAWAL POSITIONS	SWITCH CONFIGURATION
IRL-5-L	120°	60°	1, 3	
IRL-5-D	120°	60°	1 ONLY	
IRL-5-R	120°	60°	11, 1	

IRL - 5 - [] - [] - 2

