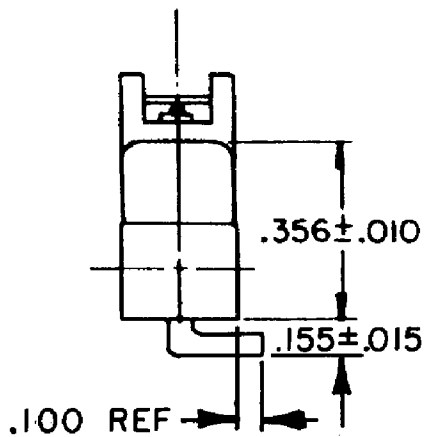
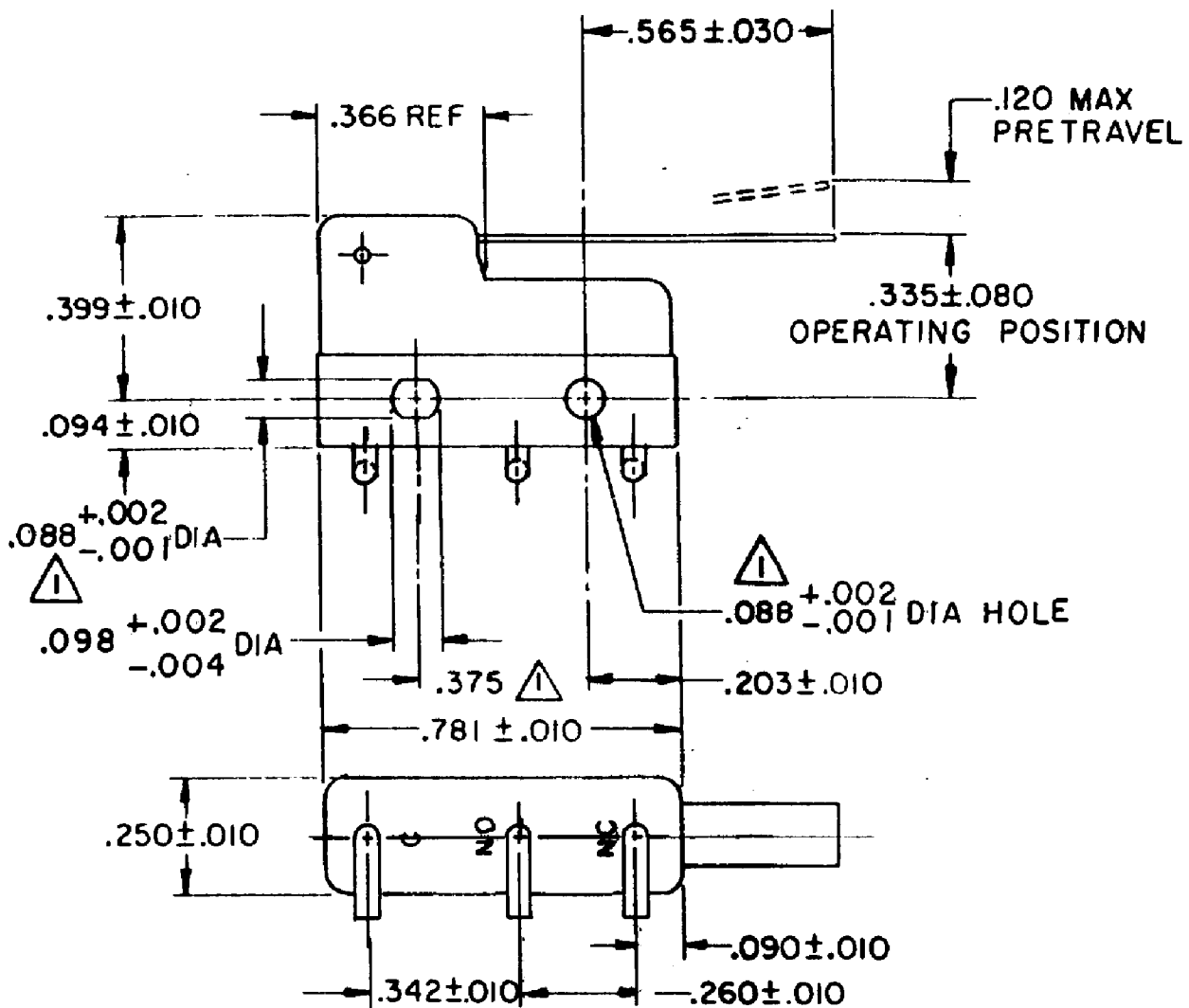
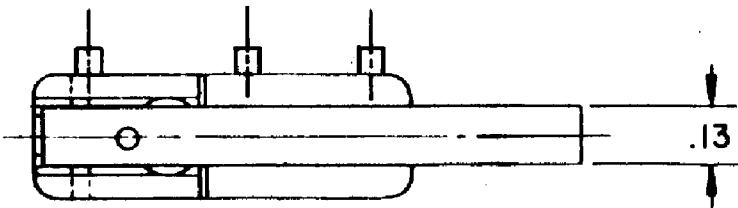


HONEYWELL  
PART NUMBER  
311SM2-H251  
PRODUCT CODE  
TZA1141





REV	DOCUMENT	CHANGED BY	CHECK
2	0038113	PRS 12JUN08	BLR



- NOTES:
- 1 - MOUNTING HOLES WILL ACCEPT PINS OR SCREWS OF .087 MAX DIA ON .375 ± .002 CENTERS
  - 2 - SWITCH WILL WITHSTAND TEMPERATURE OF 250°F
  - 3 - TERMINALS ARE PLATED FOR SOLDERING

RELEASE NO. PR - 17078  
REPLACES -

CHARACTERISTICS  
OPERATING FORCE -- 30 GRAM MAX  
RELEASE FORCE-- -- 5 GRAM MIN  
DIFFERENTIAL TRAVEL-- -- .027 MAX  
OVERTRAVEL-- -- .026 MIN

ELECTRICAL DATA			
CONTACT ARRANGEMENT S P D T			
30 VOLTS DC RATING			
	SEA LEVEL	50,000 FT	
INDUCTIVE	3 AMP	2.5 AMP	
RESISTIVE	5 AMP	5 AMP	
MAXIMUM INRUSH 24 AMP			
APPROVALS	KEMA, CE	5A, 250V ~ T85 1E4	 
	UL, CSA	5A, <u>250</u> VAC	  BRAND L4

DESIGN UNITS: INCH			
TOLERANCES UNLESS NOTED:			
NO PLACE	X	±	-
ONE PLACE	.X	±	0.030
TWO PLACE	.XX	±	0.015
THREE PLACE	.XXX	±	0.005
FOUR PLACE	.XXXX	±	-
ANGLES		±	-
THIRD ANGLE PROJECTION			

DRAWN	VK	31OCT 07
CHECK	RJ	31OCT 07
THIS DRAWING COVERS A PROPRIETARY ITEM AND IS THE PROPERTY OF HONEYWELL. THIS DRAWING IS NOT TO BE COPIED OR USED WITHOUT THE PERMISSION OF HONEYWELL.		
INTERPRET PER ANSI Y14.5M-1982 OTHER HONEYWELL ENGINEERING STANDARDS MAY APPLY		
RASTER		

Honeywell			
TITLE SWITCH - BASIC			
SIZE B	TYPE I	DRAWING NAME 311SM2-H251	REV 2
SCALE -	WEIGHT .006 LB MAX SHEET 1 OF 1		