

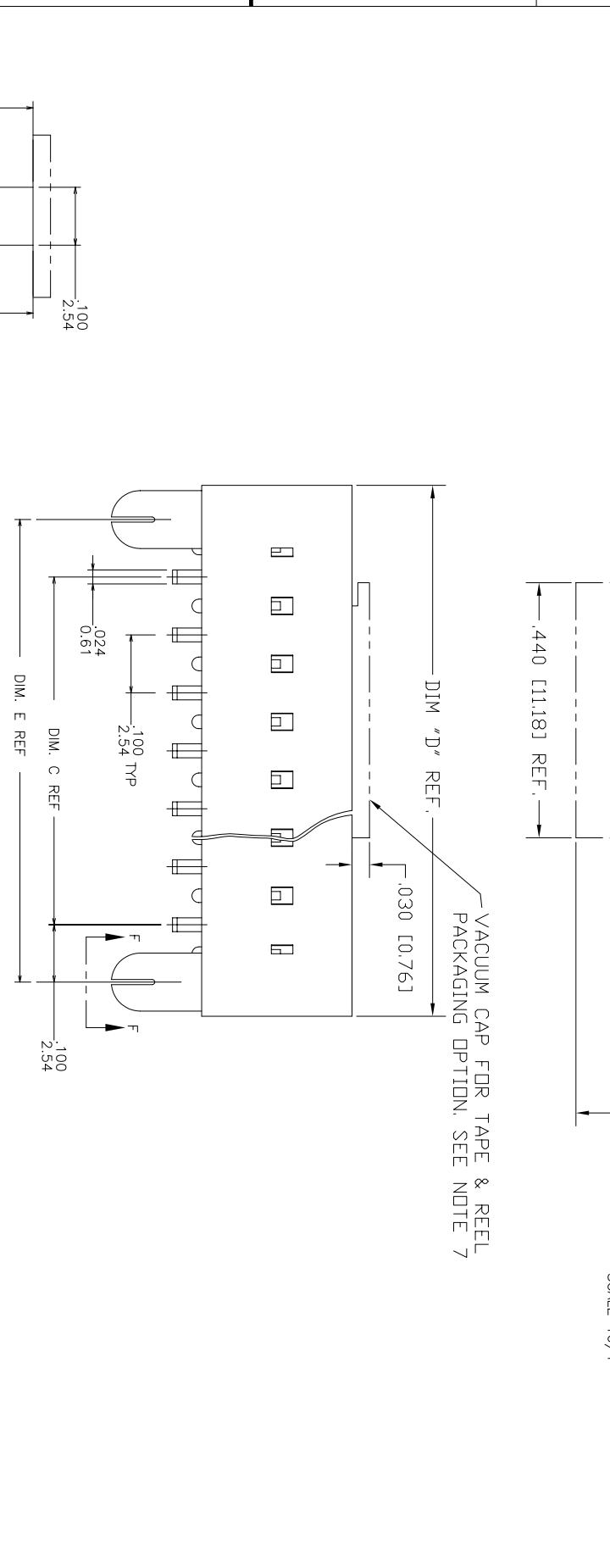
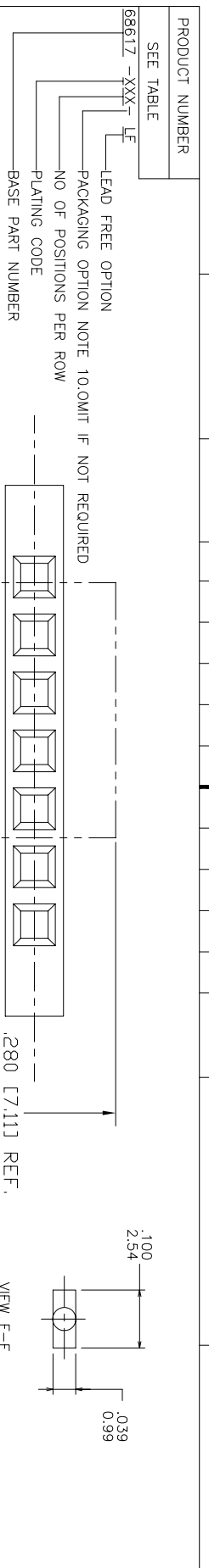


FCIconnect.com

Copyright FCI

form: A3

1 2 3 4 5 6



mat'l. code	surface	tolerance	projection	product family
SEE NOTES 1, 3 & 8	ISO 1302	ISO 4106	INCH/MM	DUBOX
tr	ecm no	dr	date	tolerance unless otherwise specified
R	V20732	GIP	04/17/02	xxx ±.01/.03
S	V21654	GIP	10/15/02	xxx ±.005/0.13
T	V03-0309	HTB	04/28/03	0.427
U	V05-0463	DPU	06/28/05	dr
V	M06-0237	MM	06/17/08	engr
W	M06-0433	AGS	10/31/08	chr
X	M07-0198	MHT	4/24/07	appd
sheet	revision	X	X	X
index	sheet	1	2	3



title
SMT SINGLE ROW
LATCHED VCC ASSEMBLY

dwg no
68617

sheet 1 of 5 size
A3

type
Product Customer Drawing

PRODUCT NO.
SEE TABLE

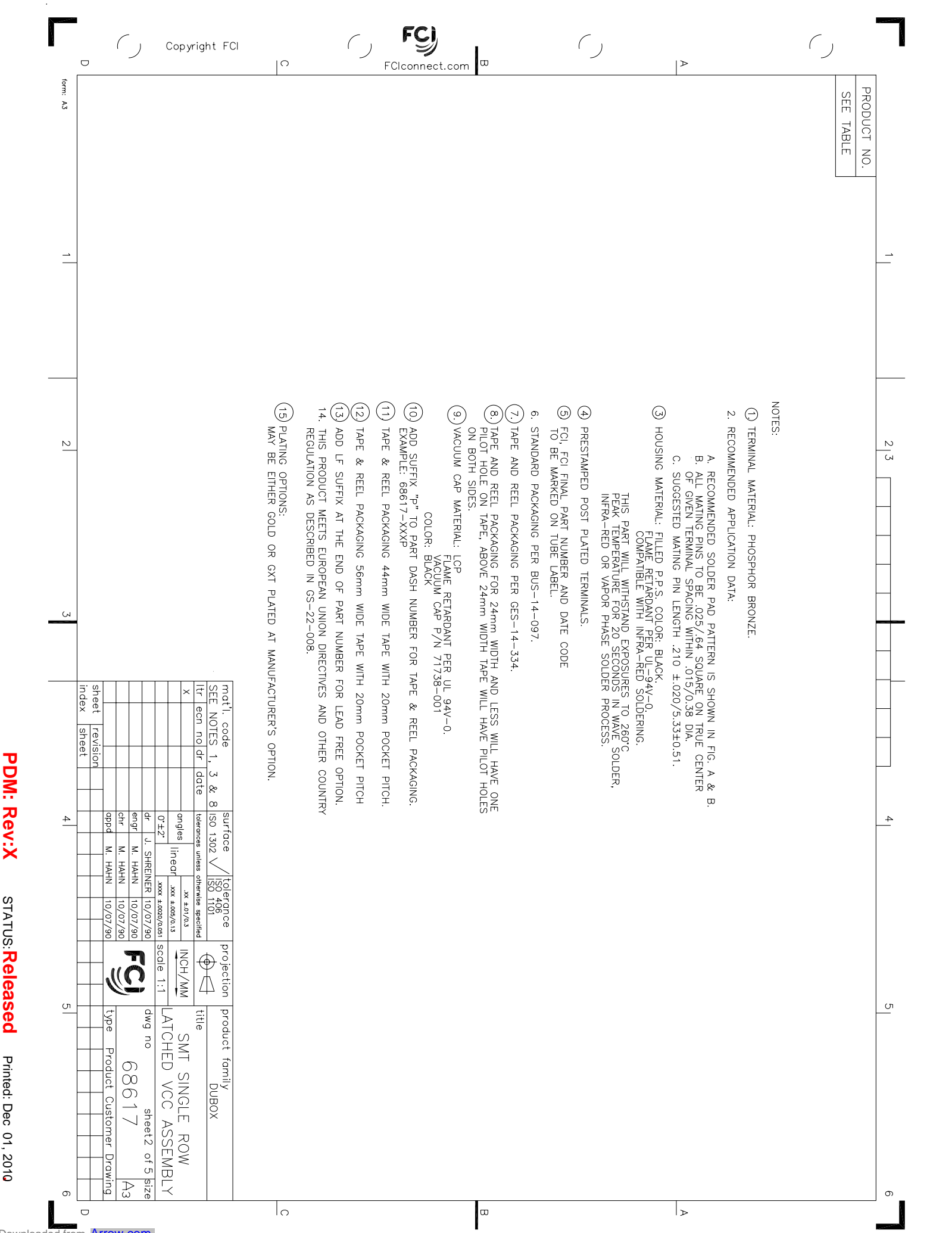
- NOTES:
- ① TERMINAL MATERIAL: PHOSPHOR BRONZE.
 2. RECOMMENDED APPLICATION DATA:
 - A. RECOMMENDED SOLDER PAD PATTERN IS SHOWN IN FIG. A & B.
 - B. ALL MATING PINS TO BE .025/.64 SQUARE ON TRUE CENTER OF GIVEN TERMINAL SPACING WITHIN .015/0.38 DIA.
 - C. SUGGESTED MATING PIN LENGTH .210 ±.020/5.33±0.51.

③ HOUSING MATERIAL: FILLED P.P.S. COLOR: BLACK.
FLAME RETARDANT PER UL-94V-0
COMPATIBLE WITH INFRA-RED SOLDERING.

THIS PART WILL WITHSTAND EXPOSURES TO 260°C
PEAK TEMPERATURE FOR 20 SECONDS IN WAVE SOLDER,
INFRA-RED OR VAPOR PHASE SOLDER PROCESS.

- ④ PRESTAMPED POST PLATED TERMINALS.
- ⑤ FCI FINAL PART NUMBER AND DATE CODE TO BE MARKED ON TUBE LABEL.
6. STANDARD PACKAGING PER BUS-14-097.
- ⑦ TAPE AND REEL PACKAGING PER GES-14-334.
- ⑧ TAPE AND REEL PACKAGING FOR 24mm WIDTH AND LESS WILL HAVE ONE PILOT HOLE ON TAPE, ABOVE 24mm WIDTH TAPE WILL HAVE PILOT HOLES ON BOTH SIDES.
- ⑨ VACUUM CAP MATERIAL: LCP
FLAME RETARDANT PER UL 94V-0.
VACUUM CAP P/N 71738-001
COLOR: BLACK
- ⑩ ADD SUFFIX "P" TO PART DASH NUMBER FOR TAPE & REEL PACKAGING.
EXAMPLE: 68617-XXXXP
- ⑪ TAPE & REEL PACKAGING 44mm WIDE TAPE WITH 20mm POCKET PITCH.
- ⑫ TAPE & REEL PACKAGING 56mm WIDE TAPE WITH 20mm POCKET PITCH
- ⑬ ADD LF SUFFIX AT THE END OF PART NUMBER FOR LEAD FREE OPTION.
14. THIS PRODUCT MEETS EUROPEAN UNION DIRECTIVES AND OTHER COUNTRY REGULATION AS DESCRIBED IN GS-22-008.
- ⑮ PLATING OPTIONS:
MAY BE EITHER GOLD OR GXT PLATED AT MANUFACTURER'S OPTION.

mat'l. code	surface	tolerance	projection	product family
SEE NOTES 1, 3 & 8	ISO 1302	ISO 1101	INCH/MM	DUBOX
X	dr	xxx ±.01/0.3	Scale 1:1	SMT SINGLE ROW
	angles	xxx ±.005/0.13		LATCHED VCC ASSEMBLY
	dr	xxxx ±.0020/0.051		sheet 2 of 5 size
	engr			68617
	chr			Product Customer Drawing
	qppd			A3
sheet	revision			
index	sheet			



PRODUCT NO NOTE 13	PLATING CONTACT AREA NOTE 15	PLATING SOLDER TAIL	MATERIAL REF.
68617-2XX	15u" / .38u Au OR GXT MIN OVER 50u" / 1.27u Ni MIN	100u" / 160u" SN 2.54u / 4.06u	NOTE 3 & 4
68617-3XX	30u" / .76u Au OR GXT MIN OVER 50u" / 1.27u Ni MIN	100u" / 160u" SN 2.54u / 4.06u	NOTE 3 & 4
68617-6XX	30u" / .76u Au OR GXT MIN OVER 50u" / 1.27u Ni MIN	100u" / 160u" SN 2.34u / 4.06u	NOTE 3 & 4
68617-8XX	30u" / .76u Au MIN OVER 50u" / 1.27u Ni MIN	100u" / 160u" SN 2.54u / 4.06u	NOTE 3 & 4

OBSOLETE	
----------	--

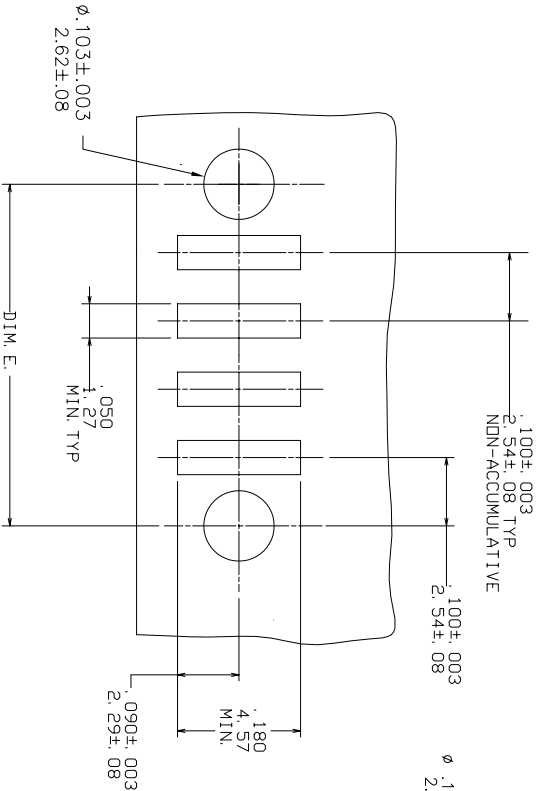


FIGURE A
TOP ENTRY
.025/.64 SQ PIN

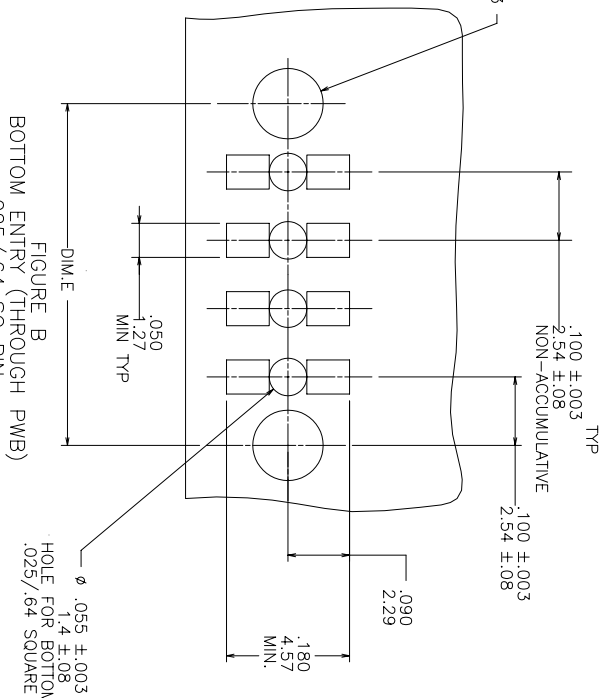
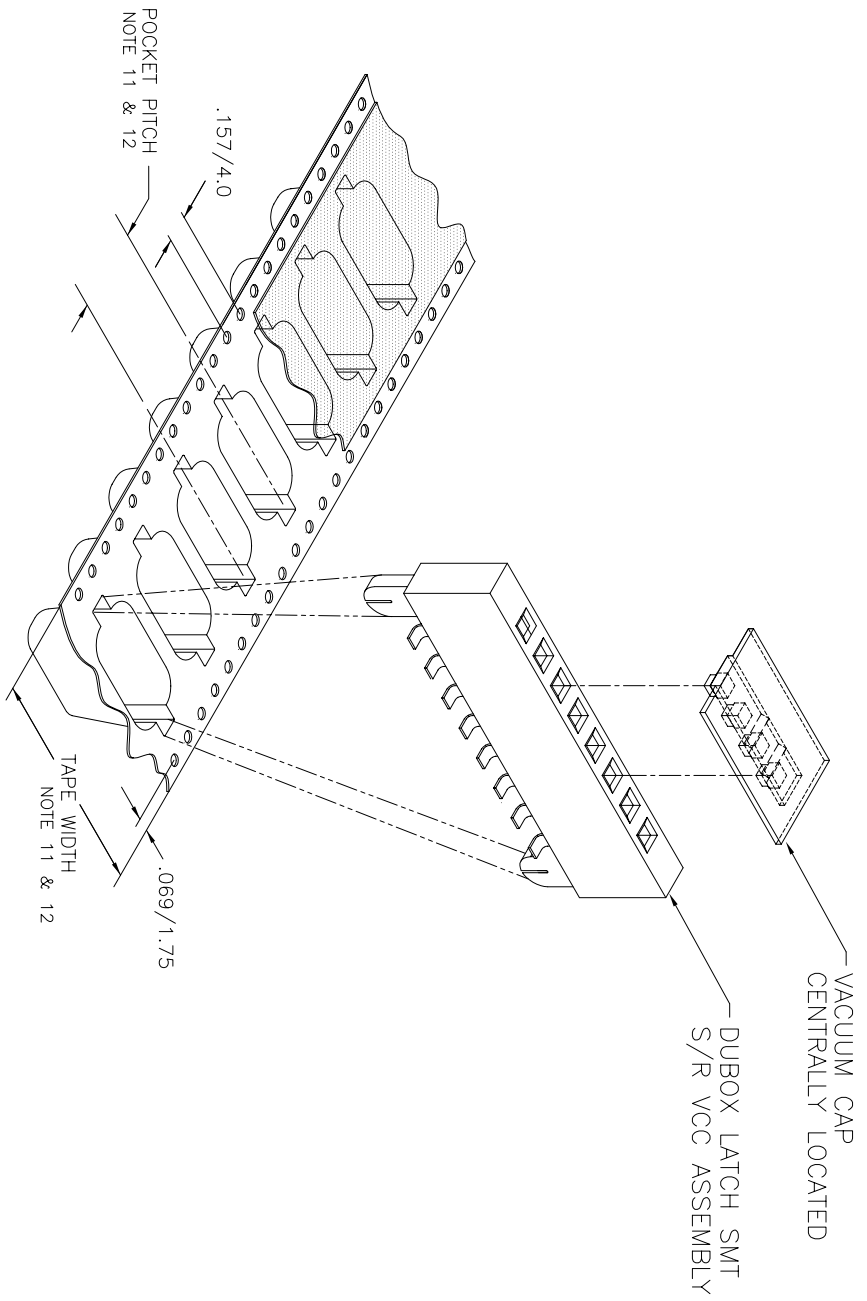


FIGURE B
BOTTOM ENTRY (THROUGH PWB)
.025/.64 SQ PIN

mat'l. code	surface	tolerance	projection	product family
	ISO 1302	ISO 1101	INCH/MM	DUBOX
tr	ecm no	dr	date	title
X				SMT SINGLE ROW LATCHED VCC ASSEMBLY
	angles	line of	scale	dwg no
	0 ± 2°	xxxx x.xxxx/0.051	1:1	68617
	dr	J. SHREINER	10/07/90	sheet 3 of 5
	enfr	M. HAHN	10/07/90	size
	chr	M. HAHN	10/07/90	A3
	oppd	M. HAHN	10/07/90	type
sheet	revision			Product Customer Drawing
index	sheet			

PRODUCT NO.
SEE TABLE



TAPE AND REEL PACKAGING ONLY

mat'l. code	surface	tolerance	projection	product family
ISO 1302	ISO 406	ISO 1101	DUBOX	
ISO 1101	tolerances unless otherwise specified	XX ±.01/.03	INCH/MM	title
ISO 1101	0° ±.2°	.XXX ±.005/.013	scale 1:1	SMT SINGLE ROW
ISO 1101	linecd	.XXXX ±.0020/.0051		LATCHED VCC ASSEMBLY
ISO 1101	angles			dwg no
ISO 1101	dr	J. SHREINER		68617
ISO 1101	engr	M. HAHN		Sheet 4 of 5 size
ISO 1101	chr	M. HAHN		A3
ISO 1101	pppd	M. HAHN		Product Customer Drawing
ISO 1101	sheet	revision		
ISO 1101	index	sheet		

