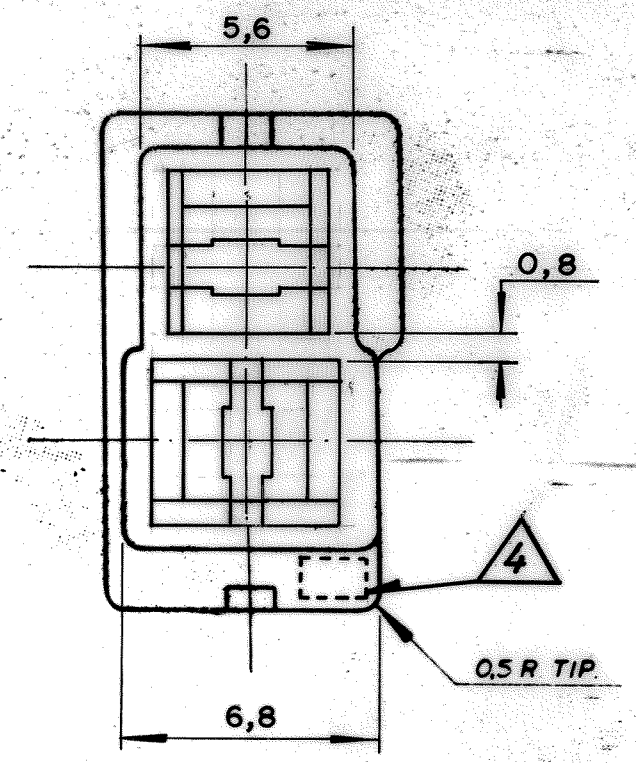
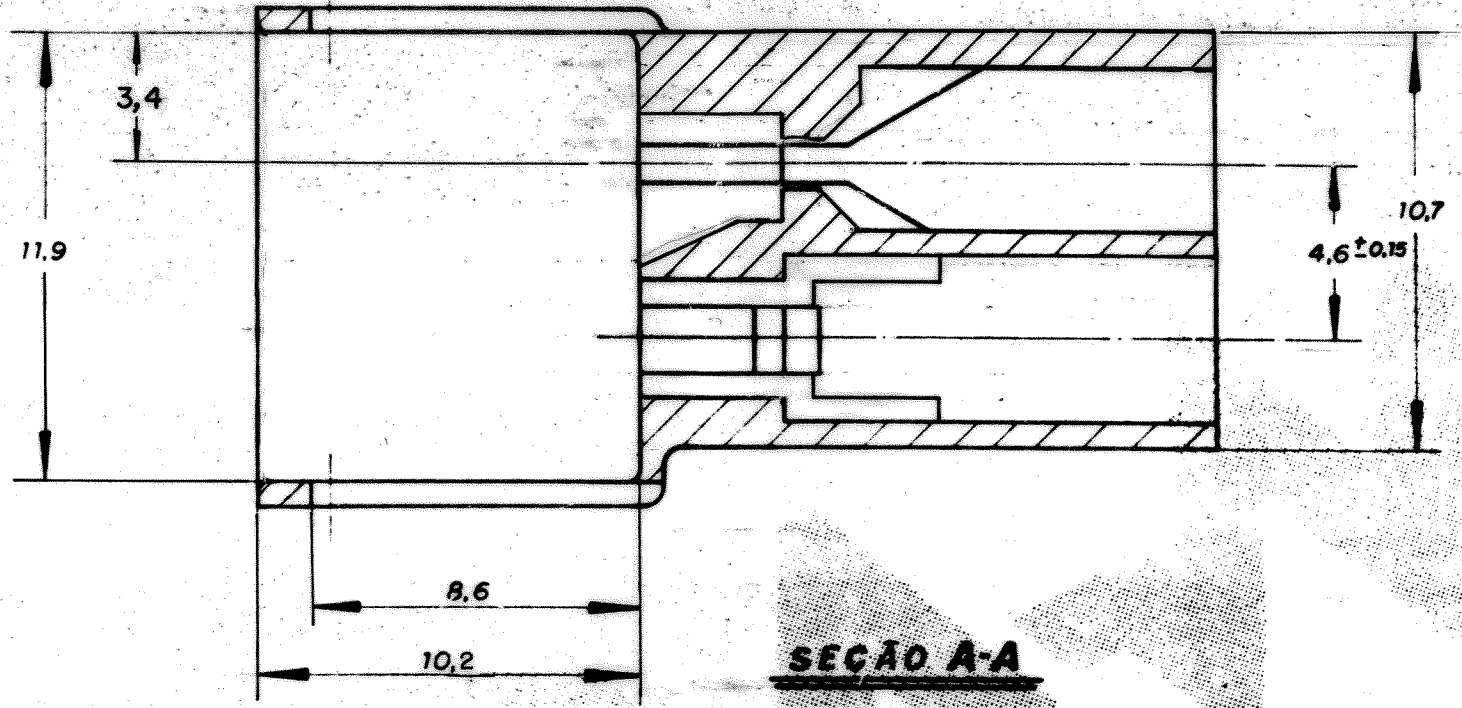
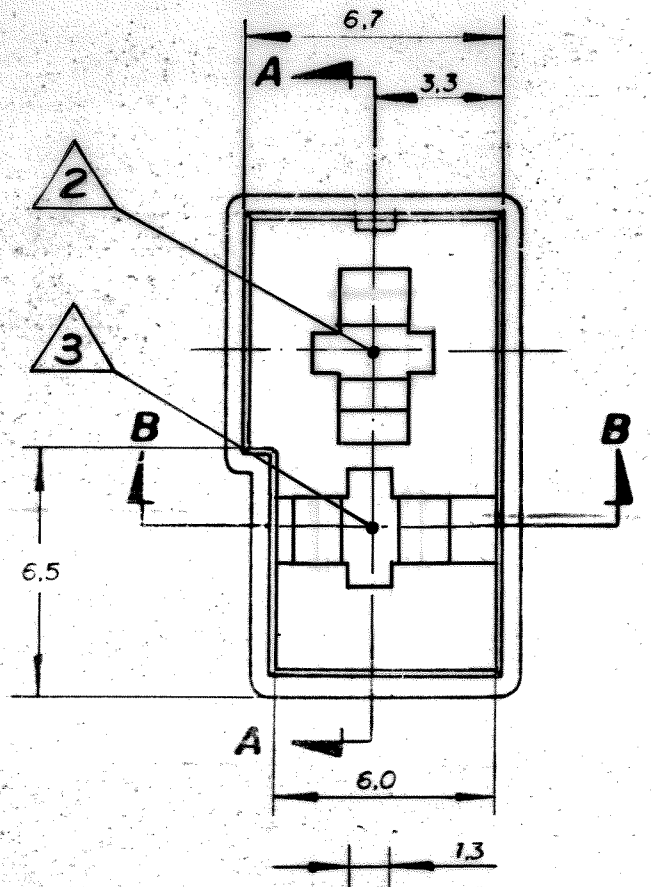


DO NOT SCALE
DIMENSIONS IN

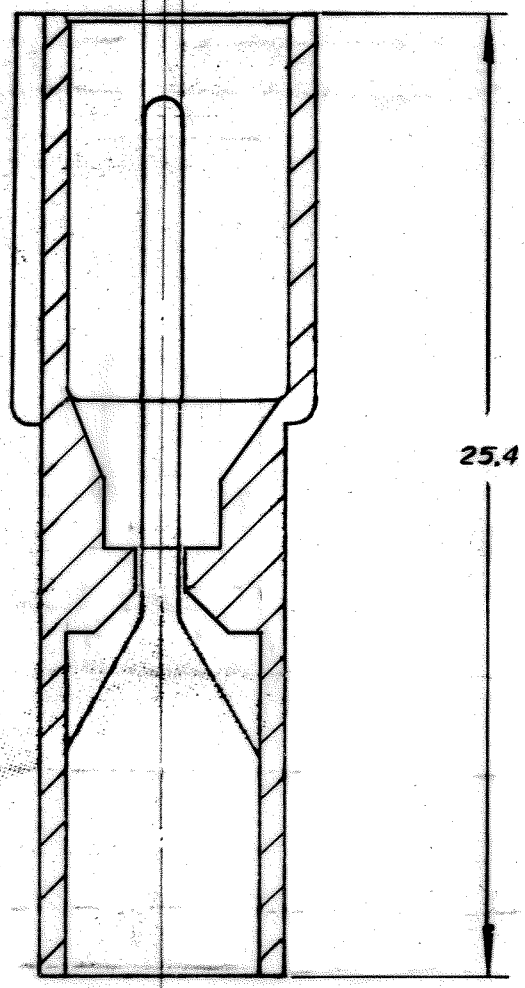
METRIC

3rd ANGLE PROJECTION

C 626065



SEÇÃO A-A



SEÇÃO B-B

- ① - RAW MATERIAL ACC. TO SPEC. IEC 60335-1
GWT 750°C, WITHOUT FLAME.
MATERIA PRIMA CONFORME ESPECIFICAÇÃO
IEC 60335-1, GWT 750°C, SEM CHAMAS.
- ② - CIRCUITO 1 - SOMENTE PARA REFERÊNCIA
- CIRCUIT 1 - FOR REFERENCE ONLY
- ③ - CIRCUITO 2 - SOMENTE PARA REFERÊNCIA
- CIRCUIT 2 - FOR REFERENCE ONLY
- ④ - NUMERO DA CAVIDADE DO MOLDE.
MOLD CAVITY NUMBER.

NATURAL	PA 6.6 V-0	1-626065-2
NATURAL	PA 66- ZYTEL 103 HSL	1-626065-1
NATURAL	PBT V-0	1-626065-0
ORANGE	POLIAMIDA 6.6	626065-9
VIOLET		626065-8
GRAY		626065-7
BROWN		626065-6
BLACK		626065-5
YELLOW		626065-4
BLUE		626065-3
GREEN		626065-2
RED		626065-1
NATURAL	POLIAMIDA 6.6	626065-0

OTHER TREATMENT	① FINISH	MATERIAL	PART NUMBER
CUSTOMER DWG for REFERENCE ONLY		THIS DRAWING IS UNPUBLISHED RELEASED FOR PUBLICATION	
		© COPYRIGHT 1984 BY AMP DO BRASIL LTDA S.P. ALL INTERNATIONAL RIGHTS RESERVED AMP PRODUCTS MAY BE COVERED BY U.S. AND FOREIGN PATENTS AND/OR PATENTS PENDING.	
		TOLERANCES UNLESS OTHERWISE STATED	INS. DIA RANGE WIRE RANGE SCALE
		DEC ± 0.15	
		ANGLES ± 1°	
L2 REV. BY ECO 07-023120 H.C. WLS. 020CT07		AMP AMP do BRASIL LTDA. São Paulo, Brasil	
L1 REV. BY ECO 07-020700 NCL MR. 043009			
L REVISED BY ECO 05-04287		DESCRIPTION	
K REVISED BY EC 18-00 042/03 H.C. 16/01/03		2 way .110S. FAST-IN-ON TAB HSG.	
J1 1-626065-0 1-626065-1 ADDED MRB PLF 05-08-97		DWG NO	SHEET
J REVISED BY Briz JRG 10-16-98		A3	10/1
I REDES C/MODIFICAÇÕES R.P. 18.10.84		C 626065	
ISS REVISION RECORD DR CHR DATE			