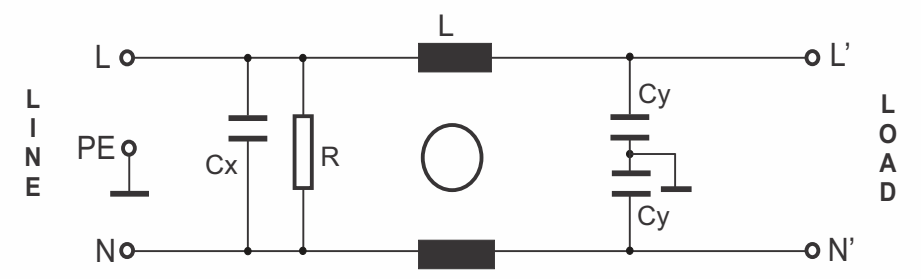
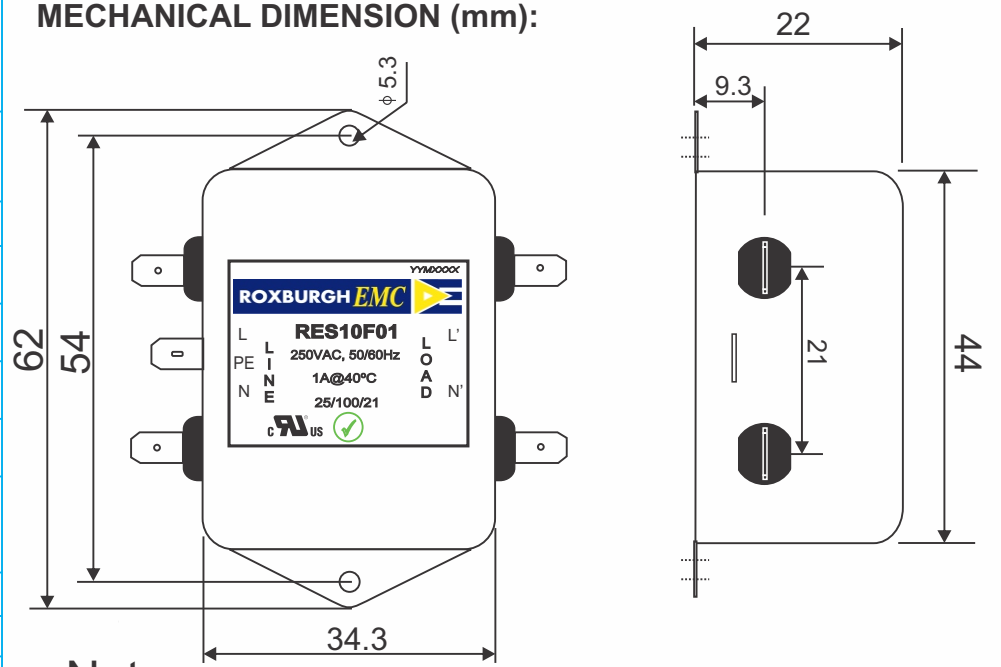


RES10F01	Rev. 0
CHARACTERISTICS:	
Rated Voltage:	250VAC max
Rated Current at Ambient:	1A @ 40°C
Operating Frequency:	DC-400HZ
Climatic Class (IEC60068-1):	25/100/21
Temperature Range:	-25°C to +100°C
Over load Current:	1.5 x Rated Ct. for 1 Min
Operational Leakage current : (at 230VAC/50Hz and Total C +/-20%)	0.74 mA max
Worst case Leakage current : (N interrupted and Total C +/-20%)	<1.11 mA max
DCR @ 25°C (+/-25%) :	300 mΩ
Test Volatge (100%) for 2 sec:-	L-N: 1100VDC
	L-GND: 3000VDC
Ingress Protection:	IP 20
Weight (Approximate):	70 gr
FILTER PARAMETERS:	
Total Inductance (L-L'+N-N') @10KHz:	12mH +50%,-30%
Total Capacitance (L-L/L-N) @1KHz:	0.1μF +/- -20%
Total Capacitance (L/N-GND) @1KHz:	9.4nF +/- -20%
Total Resistance (L-L/L-N):	1M Ω +/- -10%
Total Resistance (L/N-GND):	
APPROVALS: REACH RoHS UL	APPROVED BY AJAY Date: 25-04-2014

CIRCUIT DIAGRAM:



MECHANICAL DIMENSION (mm):



Note:

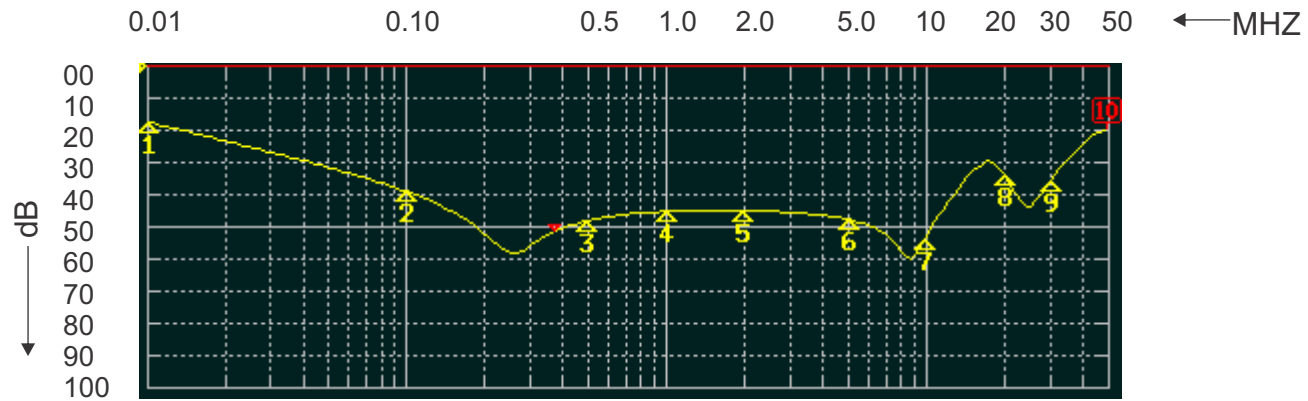
Housing matl. Fe with Ni Plated
Fast-On Terminal (6.3 x 0.8mm)
and wire (20 AWG) Connections

TOLERANCE: +/-1.0 mm

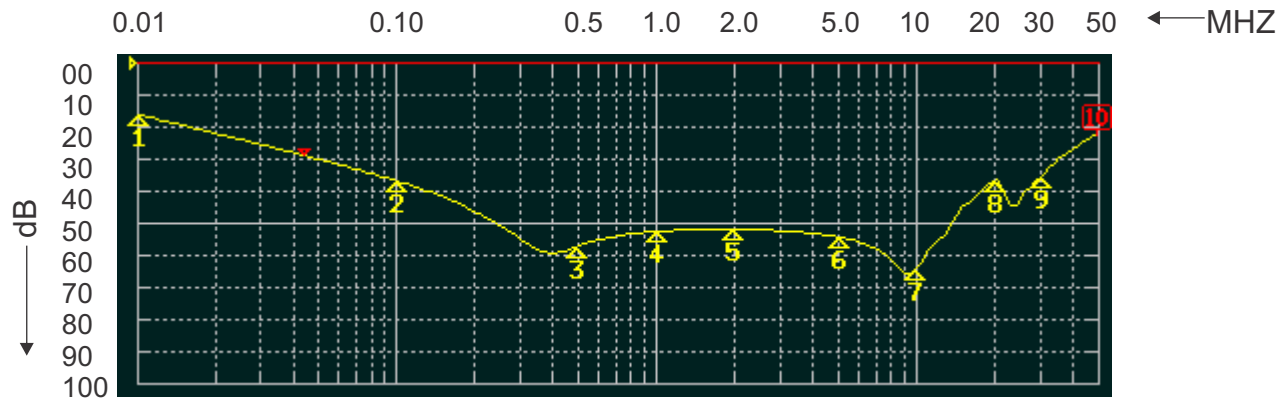


ROXBURGH EMC
FILTER INSERTION LOSS CHARACTERISTICS
CISPR 17 - 50 OHM METHOD

RES10F01



COMMON MODE



DIFFERENTIAL MODE

