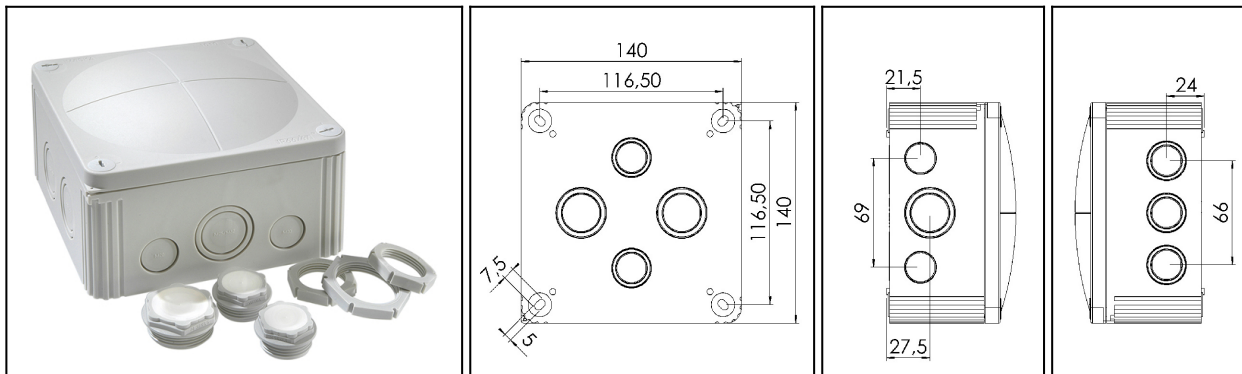



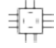
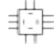
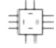
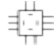
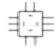


## WISKA COMBI 1010



<b>Protection class to EN 60 529:</b>	IP 66 / 67
<b>Flame protection:</b>	Glow wire test 750° C acc. to EN 60695-2-11
<b>Temperature range:</b>	-5°C up to 60°C
<b>Voltage:</b>	690 V
<b>Material:</b>	Polypropylene, reinforced; sealing: thermoplastic elastomere
<b>Terminals/poles:</b>	10 mm <sup>2</sup>
<b>Fixing:</b>	4 internal openings outside of the sealing area
<b>Equipment:</b>	<ul style="list-style-type: none"> <li>- 10 knockout entries at the side (5xM 25/32, 2xM 20, 3xM 20/25)</li> <li>- 4 knockout entries (2xM 25/32, 2xM2 0/25) in the base</li> <li>- 4 captive quick-release lid screws</li> <li>- Colour RAL 7035 light grey</li> <li>- .../S = black</li> <li>- .../W = white</li> <li>- Incl. self-sealing membrane screws QUIXX-EMS, 2 x M 25, 1 x M 32</li> </ul>

**Accessories:** DIN RAIL KIT 1010: Rail TS 35 + Fixing material, WISKA-No. 60363

Type	WISKA-No.			L x B x H external / open mm
COMBI 1010/leer	10060702	2		140 x 140 x 82
COMBI 1010/leer/S	10062214	2		140 x 140 x 82
COMBI 1010/leer/W	10062210	2		140 x 140 x 82
COMBI 1010/5	10060703	2		140 x 140 x 82
COMBI 1010/5/S	10062215	2		140 x 140 x 82
COMBI 1010/5/W	10062211	2		140 x 140 x 82
DIN RAIL KIT 1010	10060363	1	—	-