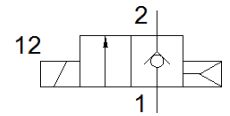
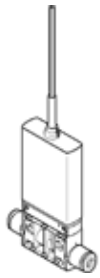


solenoid valve

MHJ10-S-2,5-QS-6-HF

Part number: 567503

FESTO



Data sheet

Feature	Value
Valve function	2/2 closed, monostable
Type of actuation	electrical
Width	10 mm
Standard nominal flow rate	160 l/min
Operating pressure	0.5 ... 6 bar
Design structure	Poppet valve without spring return
Type of reset	Air spring
Protection class	IP65
Grid dimension	10.5 mm
Operating conditions to DIN VDE 0580	S3 50% 20 min. with individual valve S3 25% 20 min. with block mounting
Note on operation	Power supply unit must be able to supply at least 1.7 A without voltage drop Do not operate without flow
Sealing principle	Hard
Assembly position	Any
Manual override	None
Type of piloting	direct
Flow direction	non reversible
Polarity protected	for operating voltage
Additional functions	Spark arresting Reduction of holding current with energy recovery Safety shut-off
b value	0.36
C value	0.66 l/sbar
Maximum switching frequency	500 Hz
Switching time on at 4 bar and 24 V in new condition	1.2 ms
Switching time off at 4 bar and 24 V in new condition	0.6 ms
Switching time on at 0.5 bar and 24 V in new condition	1 ms
Switching time off at 0.5 bar and 24 V in new condition	0.8 ms
Switching time on at 6 bar and 24 V in new condition	1.3 ms
Switching time off at 6 bar and 24 V in new condition	0.6 ms
Tolerance for Switching time ON	+/-15 %
Tolerance for Switching time OFF	+15%/-25%
Operating voltage range DC	21.6 ... 26.4 V
Characteristic coil data	24 V DC: low-current phase 3.2 W, high-current phase 14.5 W
Trigger signal range DC	3 ... 30 V
Note on feeder current	3V$U_k=15V$: 0,09 - 0,44 mA 15V$U_k=30V$: max. 15 mA
Permissible voltage fluctuation	+/- 10 %
Operating medium	Compressed air in accordance with ISO8573-1:2010 [7:4:4]
Note on operating and pilot medium	Lubricated operation not possible
CE mark (see declaration of conformity)	to EU directive for EMC
Restriction ambient and medium temperature	related to switching frequency
Corrosion resistance classification CRC	2 - Moderate corrosion stress
Storage temperature	-20 ... 50 °C

Feature	Value
Max. permissible solenoid surface temperature	120 °C
Medium temperature	-5 ... 60 °C
Ambient temperature	-5 ... 60 °C
Product weight	85 g
Electrical connection	Cable 3-core
Cable length	2.5 m
Mounting type	Optional Line installation with through hole
Pneumatic connection, port 1	QS-6
Pneumatic connection, port 2	QS-6
Materials note	Conforms to RoHS
Material seals	HNBR
Material housing	PA-reinforced PPS-reinforced
Material cable sheath	PUR
Material screws	Steel