

EL-IOT-1

Ambient Temperature | Wireless Cloud-Connected Data Logger



EasyLog

Your data, anytime, anywhere

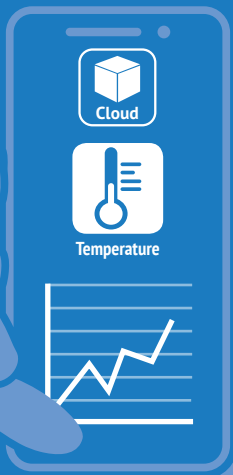
- Internal temperature sensor with -20 to 60°C measurement range
- Accuracy $\pm 0.5^\circ\text{C}$
- Uploads data to the EasyLog Cloud
- Status indicators and sounder
- Set up your own alarms and notifications
- Create audit marks at the push of a button
- Typical battery life over 1 year, or can be permanently powered



The EL-IOT is simple to set up and once configured the device can be placed anywhere within range of your WiFi network, continually monitoring and recording your data to the EasyLog Cloud. You can then use the Cloud to access, analyse and share your data from any internet-connected device worldwide.

The EL-IOT can be set with high and low alarms. If one of your parameters is breached, an instant alarm is activated. Alarm options include email alerts (which can be sent to one or multiple email addresses), SMS messages, and indicator and sounder alerts on the device.

The device can be powered using the batteries supplied or with a mains adapter (sold separately), and is provided with a wall mountable bracket for easy installation.



SPECIFICATIONS



Temperature	Range	-20 to +60°C (-4 to +140°F)
	Resolution	0.1°
	Accuracy	$\pm 0.5^\circ\text{C}$ ($\pm 0.9^\circ\text{F}$)
Logging Period		10 seconds to 12 hours (user selectable)
Transmission Interval		1 minute to 24 hours (user selectable)
Internal Memory		100,000 readings
Battery Life		>1 year typical
Battery Type		4 x AA 1.5V batteries (or via mains adapter)
Dimensions		94 x 83 x 31mm
Operating Temperature Range of Logger		-18 to +60°C (0 to +140°F) (batteries)
		-20 to +60°C (-4 to +140°F) (power supply)
Environmental Rating		IP54 (splash proof)



EasyLog

Your data, anytime, anywhere

EL-IOT-1

Ambient Temperature | Wireless Cloud-Connected Data Logger

EasyLog Cloud Your data, anytime, anywhere.



Easily access your most important data, anywhere



Connect data loggers from multiple sites in one account



Automatic email alerts and SMS



Remotely manage all of your data logger devices



Graph, review and analyse your data



Audits are easy with our event log system



Secure Cloud storage



Configurable user profiles

EasyLog Cloud App

Available for Android and Apple devices, the EasyLog Cloud app enables you to monitor and manage your wireless sensors on the go.

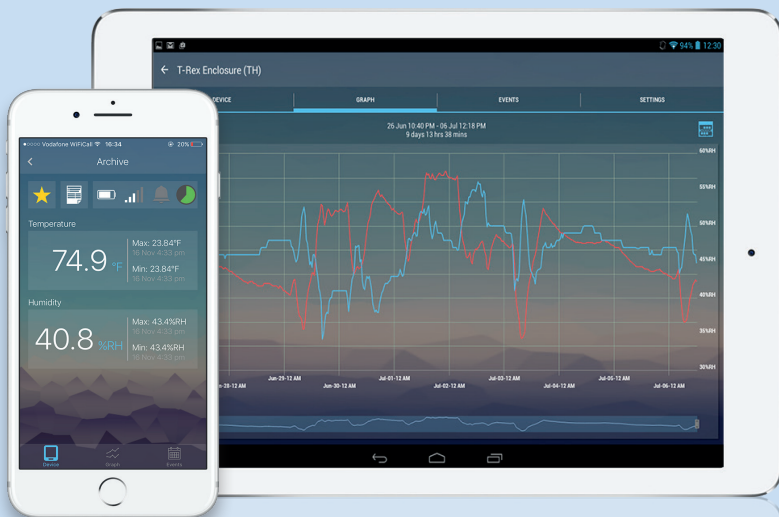


Access your vital data from any internet-enabled computer, tablet or mobile device with EasyLog Cloud. From single locations to worldwide operations, the system is perfectly scalable and can run through your existing wireless networks.

Critical events are notified to specific users in seconds via an alarm system that's easily tailored to your exact requirements.

Data is accessible 24/7 and powerful online tools make it simpler than ever to view, compare and analyse readings. An audit trail is automatically created that includes both system and data events.

Starter and Professional accounts are available, always flexible and with no locked-in contracts.



www.lascarelectronics.com





EasyLog

Your data, anytime, anywhere

EL-IOT-1

Ambient Temperature | Wireless Cloud-Connected Data Logger

CONNECTING TO THE CLOUD

1 Install the batteries and then press the main button to turn the device on.



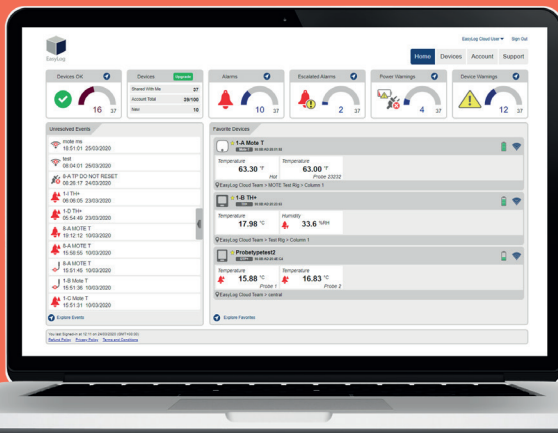
2

Download and sign in to the EasyLog Cloud App on your mobile device. Select "Setup Device" and follow the on-screen instructions to add your EL-IOT.



3

You can now view the EL-IOT's data and change settings either in the EasyLog Cloud App or by visiting your account at: www.easylogcloud.com



STATUS INDICATORS

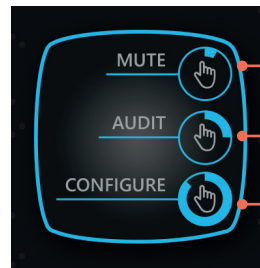
The EL-IOT has four Indicators and a sounder to clearly indicate its current status:

Indicator					
	Flashing	Flashing			Flashing
Status	Device in operation, no alarms or warnings	Alarm	Battery Low	WiFi Active	WiFi set up mode / not set up yet

The sounder is active whenever there is an alarm.

BUTTON FUNCTIONS

The main button is used to control the device functions, some of which also create a record in an Event Log, which can be viewed on the Easylog Cloud website.



Short Press

Long Press

Press and Hold

Button Press			
	Short press < 1s	Long press > 1s	Press and Hold > 10s
Function	Mutes the Alarm Sounder	Reset an alarm, creates an audit event in the record, forces data synchronisation with the Cloud	Activates Configuration mode to reconnect with the App



EasyLog

Your data, anytime, anywhere

EL-IOT-1

Ambient Temperature | Wireless Cloud-Connected Data Logger

INCLUDED IN THE BOX



BAT 1V5 AA PK4
4 x AA 1.5V
alkaline batteries



EL-IOT WALL BRACKET
Wall mounting bracket

ACCESSORIES



BAT 1V5 AA PK4
4 x AA 1.5V
alkaline batteries



EL-MOTE-PSU
Power supply

ALSO IN THE RANGE



EL-IOT-TC
Wireless thermocouple
temperature data logger



EL-IOT-TH
Wireless temperature and
humidity data logger



EL-IOT-TH+
High accuracy temperature
and humidity data logger

Visit lascarelectronics.com/data-loggers
to see our full range of data loggers and
measuring devices

BATTERY INFORMATION

We recommend that you replace the batteries annually, or prior to logging critical data. Use only AA 1.5V alkaline batteries.

The logger does not lose its stored data readings when the batteries are discharged or replaced. However, the logging process will stop and will not resume until the batteries are replaced or a power supply is connected.

The batteries must be removed before using the mains power supply.

CALIBRATION CERTIFICATES

Lascar offers a Traceable Calibration Certificate Service for temperature and humidity sensors. Using reference equipment which has been calibrated by a UKAS/NIST accredited laboratory and using apparatus traceable to national or international standards. For more information please see www.lascarelectronics.com.

TECHNICAL INFORMATION

Power Supply Voltage	9Vdc, 300mA
Operating Environment (battery power)	-18 to +60°C, 5% to 85% RH, 75kPa to 106kPa
Operating Environment (power supply)	-20 to +60°C, 5% to 85% RH, 75kPa to 106kPa
Transportation and Storage Environment	-20 to +60°C, 5% to 85% RH, 75kPa to 106kPa
Net Weight	222g
Recommended Wall Fixing Screws	3.5 x 20mm, countersunk head, cross recessed, stainless steel