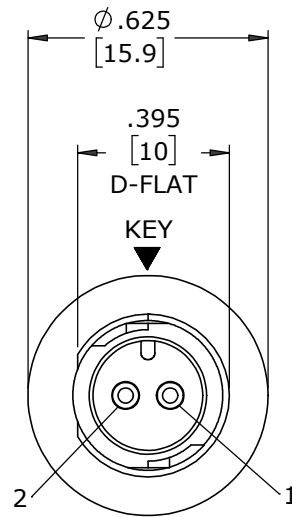


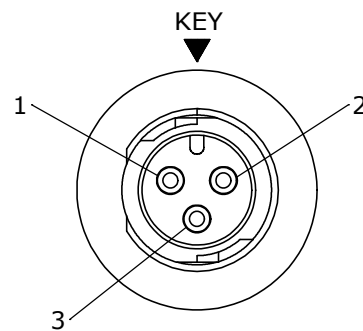
ASS'Y P/N	CONTACT QTY
W17280-2PG-P-300	2 #20
W17280-3PG-P-300	3 #20

**NOTES:**

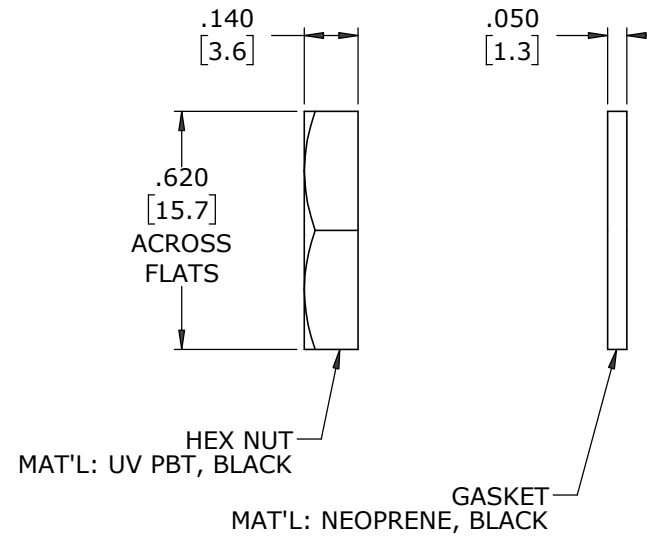
1. ALL PARTS ARE BULK PACKED
2. CONTACTS SHIPPED UNASSEMBLED
3. ALL DIMENSIONS ARE REFERENCE EXCEPT THOSE WITH A TOLERANCE



**FACE VIEW**  
W17280-2PG-P-300



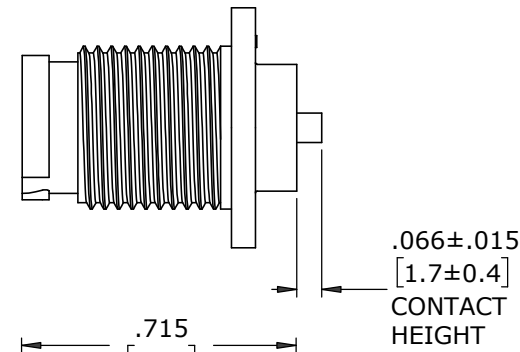
**FACE VIEW**  
W17280-3PG-P-300



HEX NUT  
MAT'L: UV PBT, BLACK

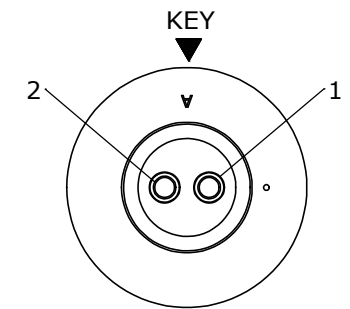
GASKET  
MAT'L: NEOPRENE, BLACK

7/16-28 UNEF-2A  
MOD. THREAD  
PANEL CONNECTOR, MALE  
MAT'L: UV PBT, BLACK

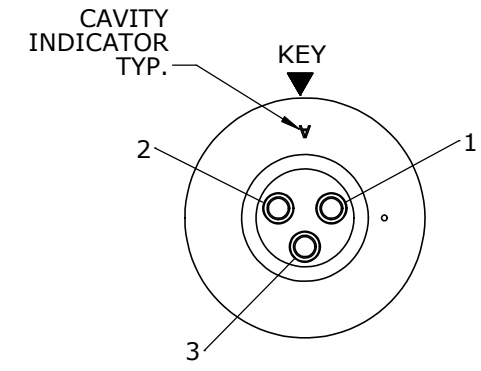


.066±.015  
[1.7±0.4]  
CONTACT  
HEIGHT

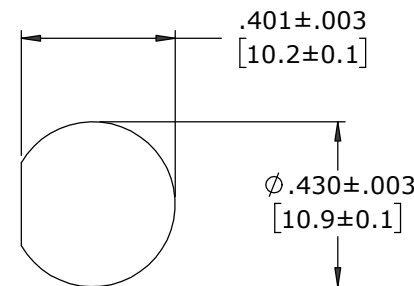
(2-3) #20 PIN CONTACTS, CRIMP  
MAT'L: GOLD PLATED COPPER ALLOY



**WIRE VIEW**  
W17280-2PG-P-300



**WIRE VIEW**  
W17280-3PG-P-300




**RECOMMENDED  
PANEL CUT-OUT**

**CUSTOMER APPROVAL**

THIS DOCUMENT CONTAINS CONFIDENTIAL INFORMATION PROPRIETARY TO CONXALL CORPORATION. ANY REPRODUCTION, DISCLOSURE, OR USE OF THIS DOCUMENT /INFORMATION IS EXPRESSLY PROHIBITED UNLESS AUTHORIZED IN WRITING BY CONXALL CORPORATION.

APPROVED BY: \_\_\_\_\_  
DATE: \_\_\_\_\_

MA	08-12-20	RELEASED PER PDR 18004-2
JGK	8/12/19	DRAWING CREATED FOR PDR #18004
REV.	INIT.	DATE
<small>ALL INFORMATION ILLUSTRATED IS THE PROPERTY OF CONXALL CORPORATION. UNAUTHORIZED DUPLICATION OR DISTRIBUTION OF THIS DOCUMENT IS PROHIBITED.</small>		<small>ORIG. DRAWN BY: JGK</small> <small>DATE: 8/12/19</small>
<small>ALL UNITS ARE IN FEET, INCHES, FRACTION OF INCHES AND DECIMALS.</small>		 <small>601 E. WILDWOOD VILLA PARK, IL 60181</small>
SCALE	SIZE	SHEET
NTS	B	1 OF 1
FILE:	DIRECTORY:	PART NUMBER:
W17280-XPG-P-300	SLW	W17280-XPG-P-300
<small>- CRITICAL CHARACTERISTIC FLAG PER SPEC. XXXX</small>		<small>REV A</small>

DIMENSIONS IN BRACKETS [ ] ARE IN MILLIMETERS UNLESS INDICATED

**RoHS COMPLIANT**

CUSTOMER PRINT

PART NUMBER: W17280-XPG-P-300

# Mouser Electronics

Authorized Distributor

Click to View Pricing, Inventory, Delivery & Lifecycle Information:

[Switchcraft:](#)

[W17280-2PG-P-300](#) [W17280-3PG-P-300](#)