

NOTES:

1. ROHS COMPLIANT
2. MATERIAL:
 PANEL CONNECTOR SOCKET - POLYPROPYLENE, UL RATING 94-HB
 HEADER CONNECTOR - POLYESTER, UL RATING 94-V0
 TERMINALS - PHOSPHOR BRONZE, TIN PLATED
 WIRE - 24 AWG 1007/ 1569
3. MOUNTING: HOLE SIZE - 9/32" (7.14mm)
4. PANEL THICKNESS: .030" (.762mm) MIN - .250" (6.35mm) MAX
 USE RNG 242 RETAINING RING WHEN ADDITIONAL SECURITY IS REQUIRED
5. LED LEAD LENGTH: 5mm FLANGLESS LED .250" (6.35mm)
6. U.S. & FOREIGN PATENT ISSUED AND PENDING

| REVISIONS | | | | |
|-----------|-----|----------------------------|----------|----------|
| ECN # | REV | DESCRIPTION | DATE | INITIALS |
| | 001 | REVISED PER ECR 111009AZ01 | 11/26/10 | KH |

CABLE ORDERING CODE EXAMPLE:

CNX K E 4 1 12

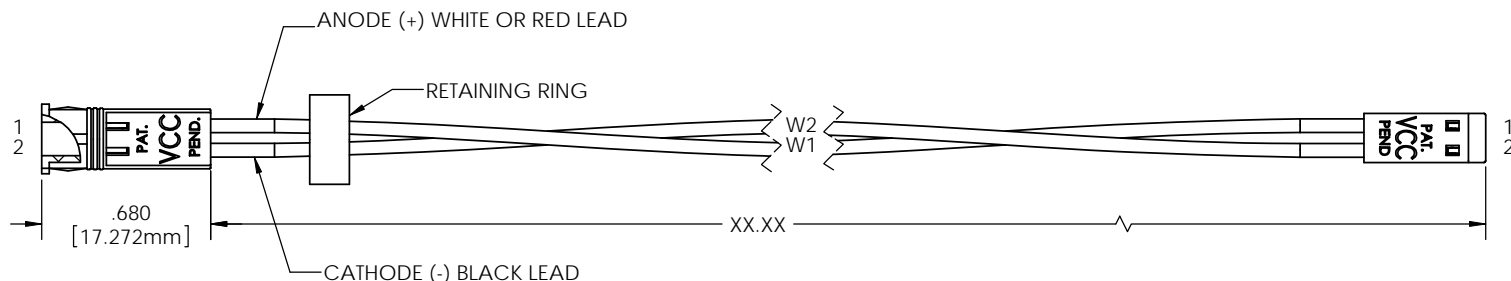
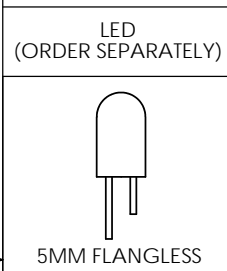
| TERMINATION * | |
|---------------|---------------------------|
| X = | STRIPPED END |
| E = | SINGLE ROW LOCKING HEADER |
| G = | SINGLE ROW PLAIN HEADER |

| WIRE SIZE * | |
|-------------|--------|
| 4 | 24 AWG |

| WIRE COLOR * | |
|--------------|---------------|
| 1 | WHITE - BLACK |
| 2 | RED - BLACK |

| WIRE LENGTH * | |
|---------------|---------------------|
| 04 | 4 INCHES (101.6mm) |
| 06 | 6 INCHES (152.4mm) |
| 08 | 8 INCHES (203.2mm) |
| 12 | 12 INCHES (304.8mm) |
| 18 | 18 INCHES (457.2mm) |
| 24 | 24 INCHES (609.6mm) |

* CALL FACTORY FOR ADDITIONAL OPTIONS



| | | | | | |
|---|----------------------|---|----------|--------------|-------------------|
| DIMENSION STYLE: INCHES / MM GENERAL TOLERANCES UNLESS OTHERWISE SPECIFIED: INCHES ±.500 MM ± 12.7 | MATERIAL | VCC OPTOELECTRONICS 190 BOSSTICK BLVD. SUITE 101 SAN MARCOS, CA 92069 U.S.A. PHONE: (760) 560-1300, FAX: (760) 560-1301 EMAIL: vccsales@vcc-lite.com | | | |
| | SEE NOTES | TITLE: | | | |
| THIRD ANGLE PROJECTION PROPRIETARY AND CONFIDENTIAL THE INFORMATION CONTAINED IN THIS DRAWING IS THE SOLE PROPERTY OF VISUAL COMMUNICATIONS COMPANY, INC. ANY REPRODUCTION IN PART OR AS A WHOLE WITHOUT THE WRITTEN PERMISSION OF VISUAL COMMUNICATIONS COMPANY, INC. IS PROHIBITED. | FINISH | CNX K CABLE ASSEMBLY | | | |
| | SEE NOTES | APPROVAL | DATE | SIZE | DWG. NO. |
| | | DRAWN K.Howard | 11/26/10 | B | CNX K ASSY |
| | | CHECKED DPZ | 11/29/10 | SCALE: 1:1 | REV 001 |
| | DO NOT SCALE DRAWING | | | SHEET 1 OF 1 | |

Mouser Electronics

Authorized Distributor

Click to View Pricing, Inventory, Delivery & Lifecycle Information:

VCC:

[CNX_K_E_4_1_04](#) [CNX_K_E_4_1_06](#) [CNX_K_E_4_1_08](#) [CNX_K_E_4_1_12](#) [CNX_K_E_4_1_24](#)
[CNX_K_X_4_1_12](#) [CNX_K_X_4_2_06](#)