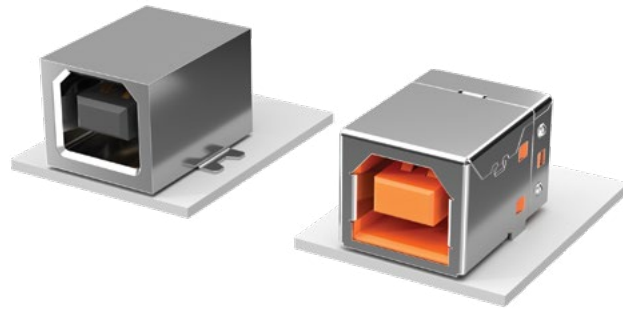


STANDARD & RUGGED USB 2.0

USB-B/USBR-B SERIES



SPECIFICATIONS

Insulator Material:

High Temperature Thermoplastic

Contact Material:

Phosphor Bronze

Plating:

Gold on Contacts, Nickel on Shell, Tin on Tails

Operating Temp Range:

-50 °C to +85 °C

Voltage Rating:

30 VAC

Cycles:

1500
(maximum number of cycles tested)

Packaging:

Packaged and shipped in Bulk Packaging Trays; Trays suitable for automation are available upon request.

Lead-Free Solderable:

USB-SM=Yes

USB-TH= Yes

(Wave Solder only)

USBR=Yes (Wave Solder only)

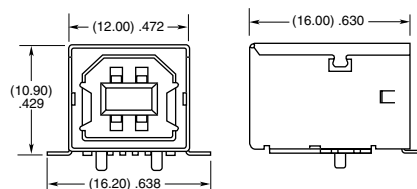
TID Number:

USB-B-S-X-TH (61001155)

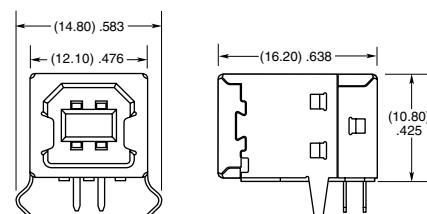
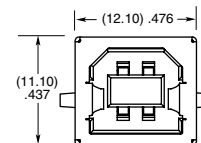
SERIES	B	S	PLATING	COLOR	TERMINATION	OTHER OPTION
USB = Standard Connector						
USBR = Increased Retention Connector (Complies with Class 1, DIV II minimum withdrawal requirement of 15N)						
			-F = Gold Flash on Mating Area, Tin on Tails	-B = Black (USB only)	-TH = Through-hole	-TR = Tape and Reel (-SM only)
			-S = 30 μ" (0.76 μm) Gold on Mating Area, Tin on Tails	-W = White (USB only)	-SM = Surface Mount (USB only)	-FR = Full Reel Tape & Reel (must order maximum quantity per reel; contact Samtec for quantity breaks) (-SM only)
				-O = Orange (USBR only)	-VT = Vertical Top Entry	

MATING / UNMATING FORCE (100 CYCLES)

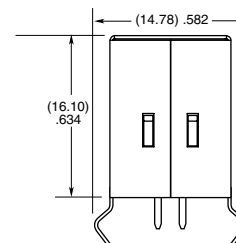
SERIES	MATING	UNMATING
USB	5.3 (23.59 N)	6.1 (27.15 N)
USBR	11.8 (52.51 N)	11.5 (51.18 N)



-SM



-TH



-VT

Mouser Electronics

Authorized Distributor

Click to View Pricing, Inventory, Delivery & Lifecycle Information:

Samtec:

[USB-B-S-F-B-TH](#) [USB-B-S-F-B-SM-R](#) [USB-B-S-S-B-VT](#) [USB-B-S-F-W-SM-TR](#) [USB-B-S-S-B-SM](#) [USB-B-S-S-W-TH](#)
[USB-B-S-F-B-SM](#) [USB-B-S-S-W-SM](#) [USB-B-S-F-B-SM-TR](#) [USB-B-S-S-B-SM-R](#) [USB-B-S-F-W-SM-R](#) [USB-B-S-F-B-](#)
[VT](#) [USB-B-S-S-W-VT](#) [USB-B-S-F-W-TH](#) [USB-B-S-S-B-TH](#) [USB-B-S-F-B-TH-R](#) [USB-B-S-F-B-VT-R](#) [USB-B-S-S-W-](#)
[VT-R](#) [USB-B-S-S-B-SM-R-TR](#) [USB-B-S-S-B-SM-TR](#) [USB-B-S-F-W-VT-R](#) [USB-B-S-S-W-TH-TR](#) [USB-B-S-S-W-SM-](#)
[TR](#) [USB-B-S-F-B-TH-TR](#) [USB-B-S-S-W-SM-R](#) [USB-B-S-F-W-TH-R](#) [USB-B-S-F-B-SM-R-TR](#) [USB-B-S-F-W-SM-R-TR](#)
[USB-B-S-F-W-SM](#) [USB-B-S-S-B-TH-R-TR](#) [USB-B-S-F-W-TH-TR](#) [USB-B-S-F-B-TH-R-TR](#) [USB-B-S-S-W-TH-R](#) [USB-](#)
[B-S-S-B-VT-R](#) [USB-B-S-S-W-SM-R-TR](#) [USB-B-S-F-W-VT](#) [USB-B-S-S-B-TH-TR](#) [USB-B-S-F-W-TH-R-TR](#)