

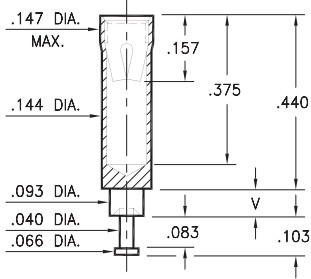
PIN RECEPTACLES

FOR .065" - .082" DIAMETER PINS

0395

0395-X-15-XX-07-XX-10-0

Swage mount in .096 hole

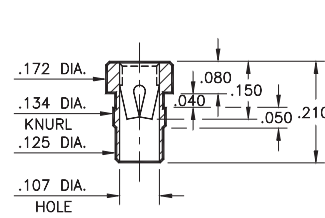


Basic Part Number	Board Thickness	Length V
0395-1	.031	.062
0395-2	.062	.094
0395-3	.094	.125
0395-4	.125	.156
0395-5	.188	.219

8016

8016-0-15-XX-07-XX-10-0

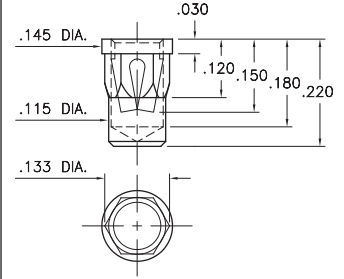
Press-fit in .131 mounting hole



0350

0350-0-15-XX-07-XX-10-0

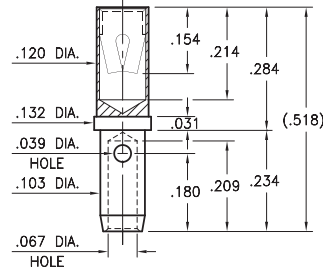
Hex press-fit in .129±.002 plated through-hole



0714

0714-0-33-XX-07-XX-10-0

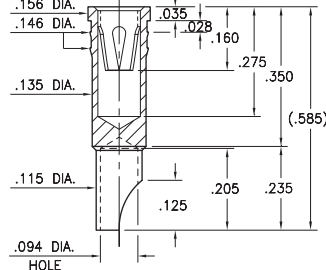
Wire crimp termination. Accepts wire sizes 14 AWG Max. / 16 AWG Min.



0778

0778-0-18-XX-07-XX-10-0

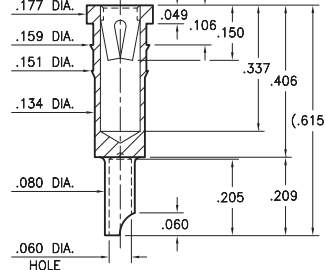
Press-fit in .143 mounting hole
Accepts wire sizes up to 14 AWG



9177

9177-0-18-XX-07-XX-10-0

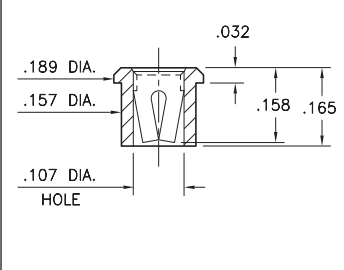
Press-fit in .151 mounting hole
Accepts wire sizes up to 16 AWG



5391

5391-0-15-XX-07-XX-10-0

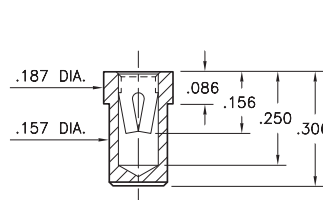
Solder mount in .159 min. mounting hole



8837

8837-0-15-XX-14-XX-10-0

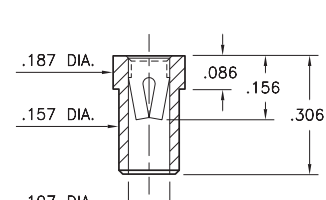
Solder mount in .159 min. mounting hole



9837

9837-0-15-XX-14-XX-10-0

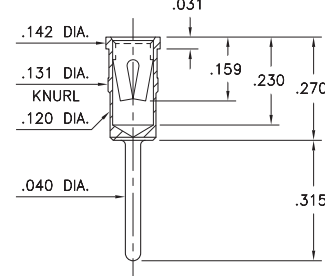
Solder mount in .159 min. mounting hole



8994

8994-0-15-XX-07-XX-04-0

Press-fit in .128 mounting hole



SPECIFICATIONS:

Shell Material: Brass Alloy 360, 1/2 Hard

Contact Material: Beryllium Copper Alloy 172, HT

Dimensions: Inches

Tolerances On: Lengths: ±.005
Diameters: ±.002
Angles: ± 2°



ORDER CODE: XXXX - X - XX - XX - XX - XX - 10 - 0

BASIC PART #

SPECIFY SHELL FINISH:

- 01 200 μ" TIN/LEAD OVER NICKEL
- ◆ 80 200 μ" TIN OVER NICKEL (RoHS)
- ◆ 15 10 μ" GOLD OVER NICKEL (RoHS)

SPECIFY CONTACT FINISH:

- 01 200 μ" TIN/LEAD OVER NICKEL
- ◆ 80 200 μ" TIN OVER NICKEL (RoHS)
- ◆ 27 30 μ" GOLD OVER NICKEL (RoHS)

SELECT CONTACT:

#07 or #14 CONTACT (DATA ON PAGE 261)

(For alternate contact choices, see group H on page 248)



Mouser Electronics

Authorized Distributor

Click to View Pricing, Inventory, Delivery & Lifecycle Information:

[Mill-Max:](#)

[0395-1-15-80-07-27-10-0](#) [8837-0-15-80-14-27-10-0](#) [0714-0-33-15-07-27-10-0](#) [9177-0-18-80-07-27-10-0](#) [9837-0-15-80-14-27-10-0](#) [9837-0-15-15-14-27-10-0](#)