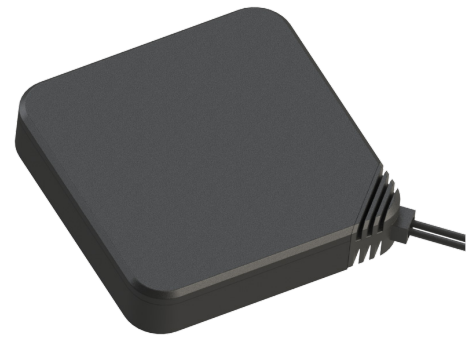




MEA-698-2700-AM

OMNI-DIRECTIONAL LTE ANTENNA

Part #: 100-00143-01



Description

The MEA-698-2700-AM is a dual-port multiband omni-directional LTE antenna. This antenna is designed for 4G LTE covering 698-2700 MHz. The MEA-698-2700-AM is an ultra-low profile rugged antenna used for a variety of cellular LTE applications. The antenna features custom cable length and connectors options. This is an ideal antenna for many IoT installations.

Electrical Specifications

Parameter	Specification
Frequency Range	698-2700 MHz
Impedance	50 Ω
VSWR	≤ 2.0
Gain	4.5 dBi
Radiation	Omni-Directional
Polarization	Vertical

Mechanical Specifications

Parameter	Specification
Antenna Dimensions	101.5 x 77.6 x 15.8 mm
Operating Temperature	- 40 °C to + 80 °C
Antenna Radome Material	PC + PBT
Connector	SMA Male (or other)
Antenna Color	Black

Features

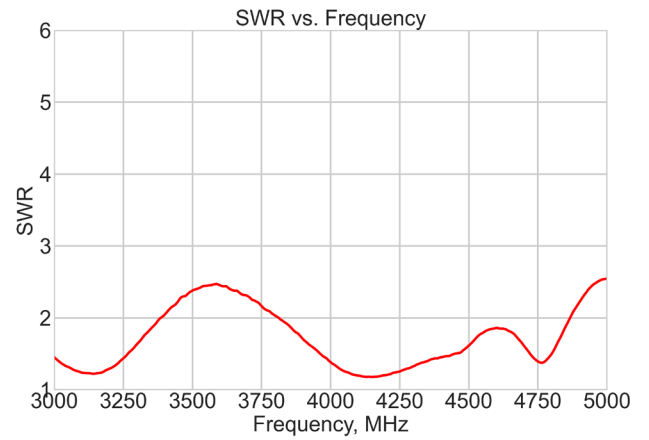
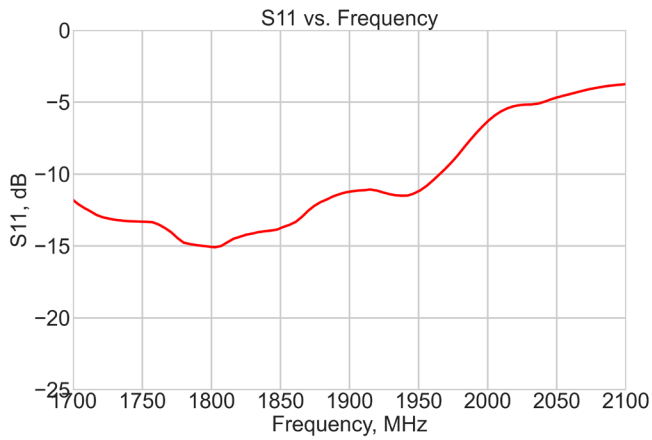
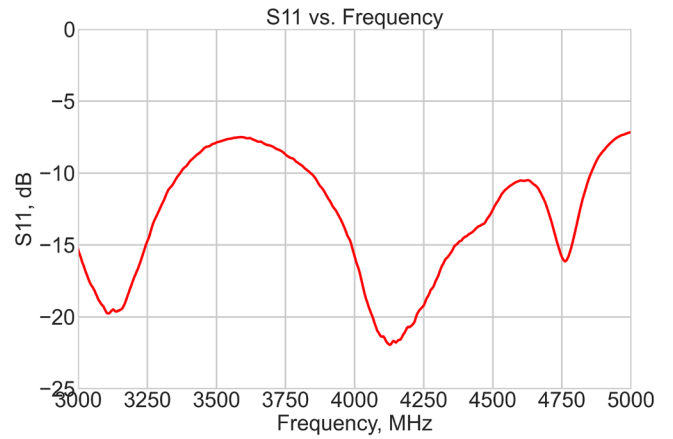
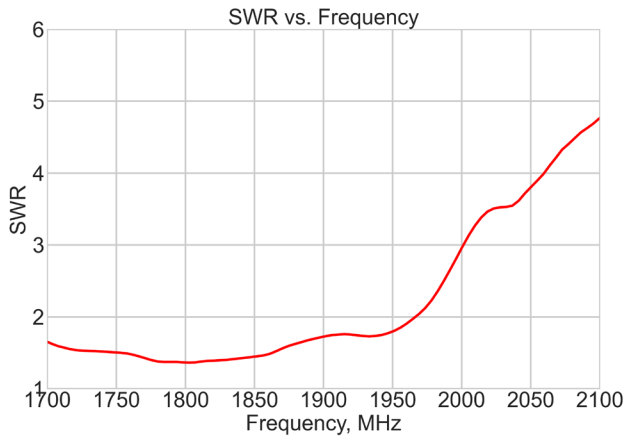
- Dual-Port Multiband
- Omni-Directional LTE Antenna
- Covers Frequencies: 698 - 2700 MHz
- Low Profile
- Rugged Design

Applications

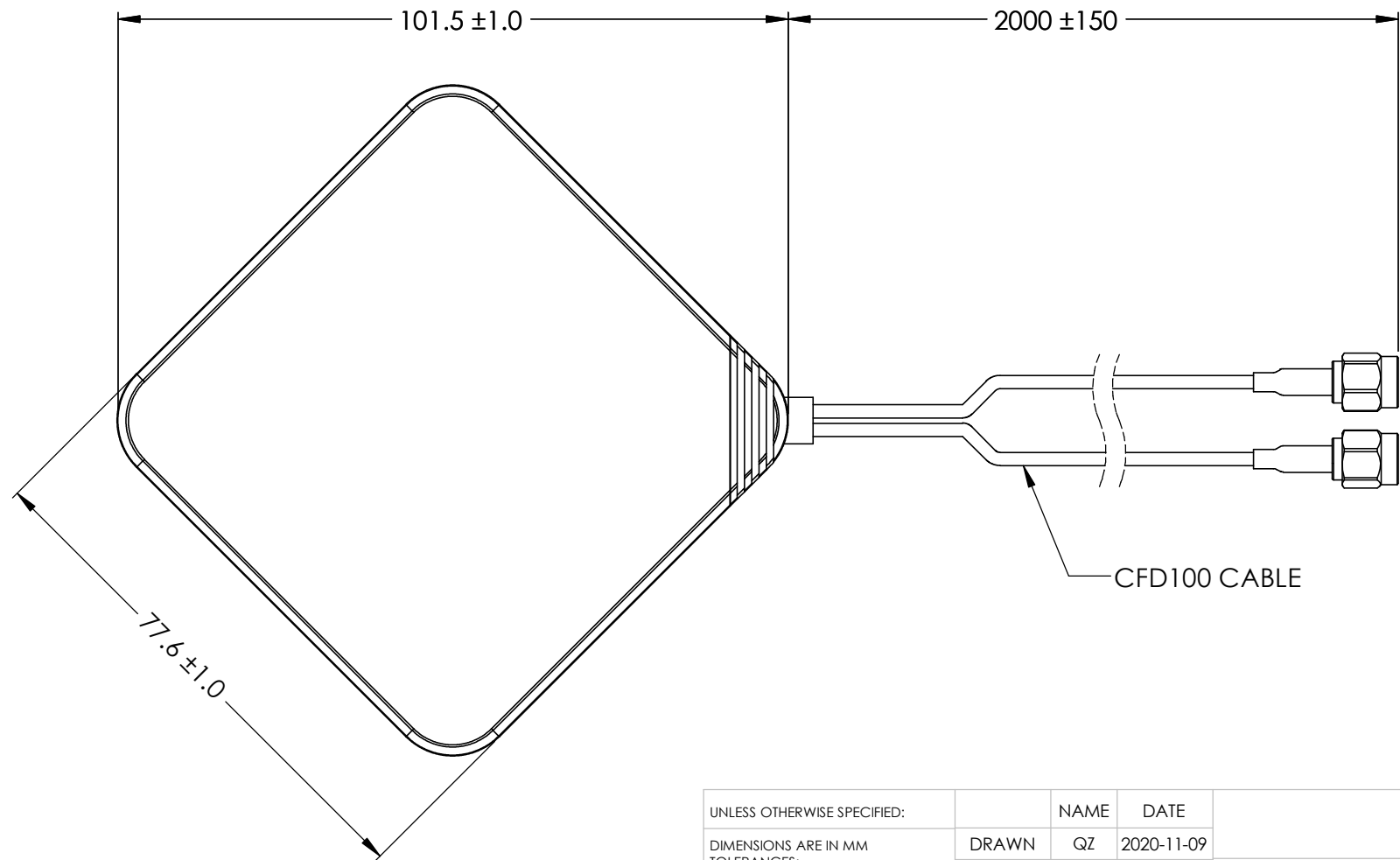
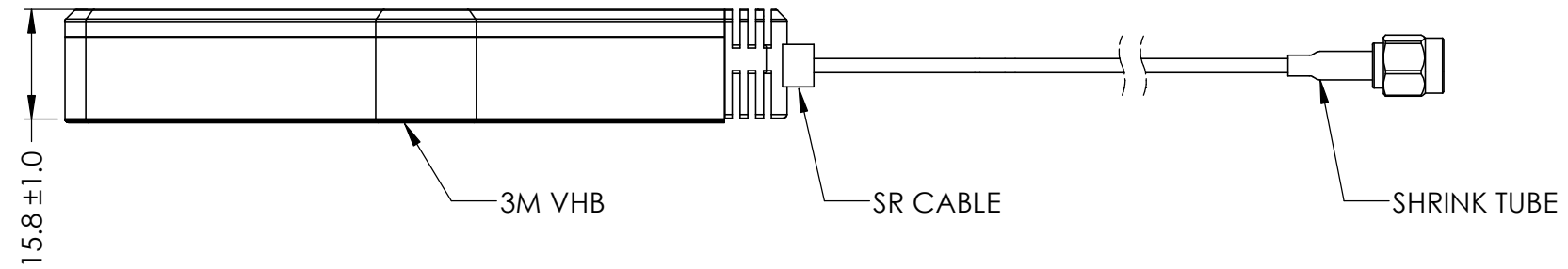
- Cellular, LTE, and WiMax Applications
- Modems, Routers, and Gateways
- Security
- Asset Tracking
- IoT

Radiation Specifications

698-2700 MHz



DRAWING REVISION HISTORY			
REV	DESCRIPTION	DATE	BY
A	INITIAL RELEASE	2020-11-09	QZ



- NOTES:
1. FREQUENCY: 698-2700MHZ
 2. V.S.W.R: ≤ 2.0
 3. GAIN: 4.5DBI
 4. IMPEDONCE: 50Ω
 5. POLARIZATION: VERTICAL
 6. RADIATION: OMNI
 7. CONNECTOR: SMA-MALE
 8. TEMPERATURE: -40°C TO $+70^{\circ}\text{C}$

ITEM 100-00143-01 REVISION HISTORY			
REV	DESCRIPTION	DATE	BY
A	INITIAL RELEASE	2020-11-09	QZ

UNLESS OTHERWISE SPECIFIED:		NAME	DATE
DIMENSIONS ARE IN MM		DRAWN	QZ 2020-11-09
TOLERANCES:		CHECKED	ZX 2020-11-10
FRACTIONAL \pm		ENG APPR.	NPC 2020-11-12
ANGULAR: MACH $\pm .5^{\circ}$ BEND \pm		MFG APPR.	
ONE PLACE DECIMAL ± 1.0		Q.A.	
TWO PLACE DECIMAL $\pm .50$			
INTERPRET GEOMETRIC TOLERANCING PER:			
 THIRD ANGLE PROJECTION		CAD MAINTAINED. CHANGES SHALL BE INCORPORATED BY THE DESIGN ACTIVITY.	
DO NOT SCALE DRAWING			

MAXTENA, INC		
TITLE:		
100-00143-01		
MEA-698-2700-SMA		
SIZE	DWG. NO.	REV
B	117-00362-01	A
CAGE CODE: 5KQH7	SCALE: NONE	SHEET 1 OF 1

PROPRIETARY AND CONFIDENTIAL
 THE INFORMATION CONTAINED IN THIS DRAWING IS THE SOLE PROPERTY OF MAXTENA, INC. ANY REPRODUCTION IN PART OR AS A WHOLE WITHOUT THE WRITTEN PERMISSION OF MAXTENA, INC IS PROHIBITED.

Mouser Electronics

Authorized Distributor

Click to View Pricing, Inventory, Delivery & Lifecycle Information:

[Maxtena:](#)

[MEA-698-2700-AM](#)