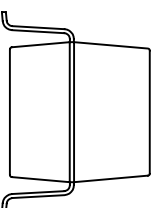
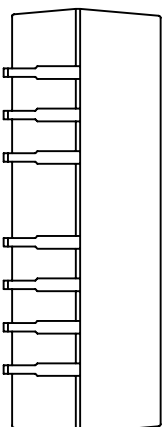
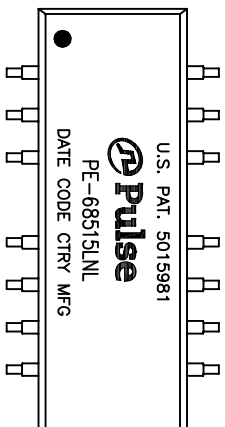


NOTES:

1. ROHS COMPLIANT
2. HEADER: THERMOSET PLASTIC MATERIAL WITH FLAMMABILITY RATING UL 94V-0 OR BETTER.
3. STORAGE TEMPERATURE: -20°C TO +125°C
4. COMPLIANCE TO J-STD:
  - A. J-STD-002: SOLDERABILITY AT 245°C REFLOW PROFILE
  - B. J-STD-020: LEVEL 4, MOISTURE SENSITIVE
  - C. J-STD-075: R7, 245°C MAXIMUM THROUGH REFLOW SOLDER
5. TO ORDER TAPE & REEL PACKAGING ADD A "T" SUFFIX TO THE PART NUMBER(i.e PE-68515LNL BECOMES PE-68515LNL(T)).



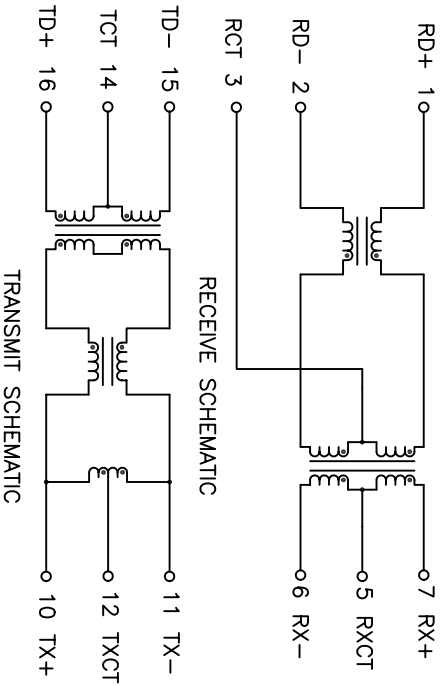
FINAL OUTLINE

© Copyright, 2014. Pulse Electronics Corp. All rights reserved. Pulse confidential & proprietary. (10/22/14)

PRODUCT DESCRIPTION	TLA DRAWING	PS DRAWING	SHEET	PART NO.	DATASHEET REV.
MDL,SIN,100D,1:1,SM,TU	PE-68515LNL-11	-	1 OF 3	PE-68515LNL	A

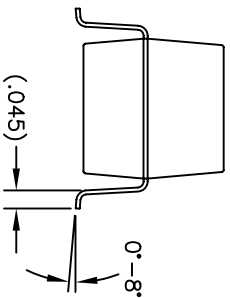
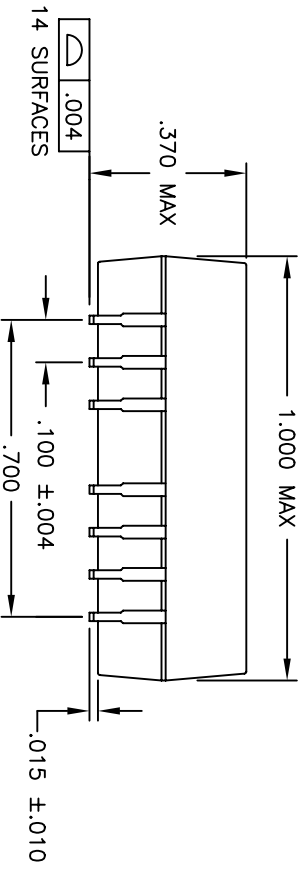
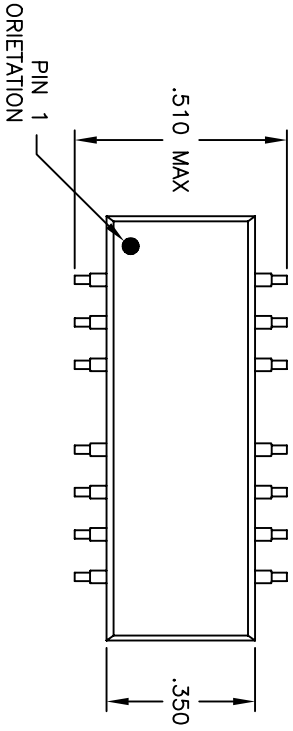
ELECTRICAL CHARACTERISTICS AT +25°C UNLESS OTHER SPECIFIED

PARAMETER	SPECIFICATIONS					
OPERATING TEMP	0°C - 70°C					
URNS RATIO	1.00 ± 2%					
POLARITY	PER SCHEMATIC					
INSERTION LOSS	100 KHZ	32-62 MHZ	100 MHZ	140 MHZ		
	-1.2 DB MAX	-1 DB MAX	-1.6 DB MAX	-3 DB MAX		
	1-30 MHZ	40 MHZ	50 MHZ	60-80 MHZ		
RETURN LOSS (Z OUT = 100 OHM±15%)	-16 DB MIN	-13.5 DB MIN	-11.5 DB MIN	-10 DB MIN		
	32 MHZ	62-100 MHZ				
CROSSTALK, ADJACENT CHANNELS	-40 DB MIN		-38 DB MIN			
	32 MHZ	62 MHZ	100 MHZ	200 MHZ		
DIFFERENTIAL TO COMMON MODE REJECTION RATIO	-42 DB MIN	-37 DB MIN	-33 DB MIN	-25 DB MIN		
DC RESISTANCE 1/2 WINDING	.60 OHMS MAX					
DC RESISTANCE IMBALANCE	±.065 OHMS MAX (CENTER TAP SYMMETRY)					
INPUT - OUTPUT ISOLATION	1500 VRMS MIN @ 60 SECONDS					



© Copyright, 2014. Pulse Electronics Corp. All rights reserved. Pulse confidential & proprietary. (10/22/14)

PRODUCT DESCRIPTION	TLA DRAWING	PS DRAWING	SHEET	PART NO.	DATASHEET REV.
MDL,SIN,100D,1:1,SM,TU	PE-68515LNL-11	-	2 OF 3	PE-68515LNL	A



DIMENSIONS ARE IN INCHES WITH THE FOLLOWING TOLERANCES:  
 .XX = ±.01  
 .XXX = ±.005

© Copyright, 2014, Pulse Electronics Corp. All rights reserved. Pulse confidential & proprietary. (10/22/14)

PRODUCT DESCRIPTION	TLA DRAWING	PS DRAWING	SHEET	PART NO.	DATASHEET REV.
MDL,SIN,100D,1:1,SM,TU	PE-68515LNL-11	-	3 OF 3	PE-68515LNL	A

E-MAIL: PRODI@PULSENETWORK.COM; PULSEELECTRONICS.COM(US); ASIA@PULSEELECTRONICS.COM(Asia) PHONE: USA:858 674 8100, GERMANY:49 7032 78060, SINGAPORE:65 6287 8998, SHANGHAI:86 21 62787060, TAIWAN:886 3 4356768