

PRODUCT NUMBER
65039-XXXX(E)LF

DESIGN CODE
0 = STANDARD
2 = OPTIONAL RIB
SEE SHEET 2

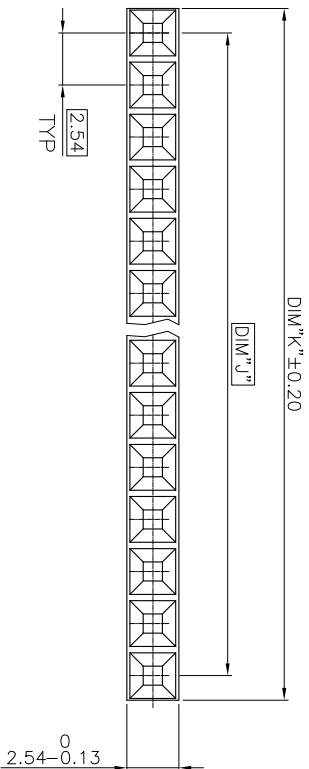
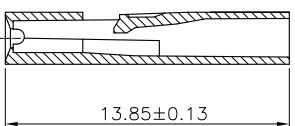
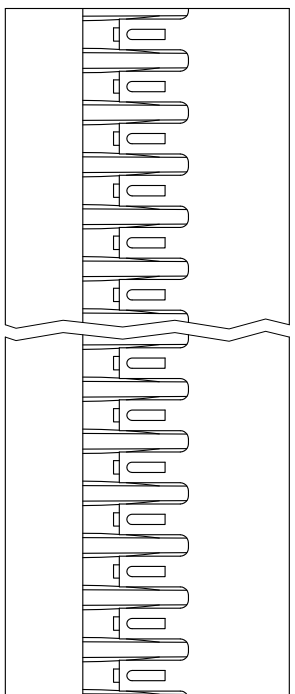
PIN STYLE
SEE SHEET 2

INDICATES THE PRODUCT IS ROHS COMPLIANT, SEE NOTE 6

65039-XXXXLF OR 65039-XXXXLF ARE EXACTLY THE SAME PRODUCTS. EXTENSION "E" JUST FOR OLD EUROPEAN DESIGN AND MANUFACTURING SITE

NOTES:

1. MOLDING MATERIAL : MODIFIED POLYPHELYNENE COLOR BLACK, UL 94 V0
 2. LATCH MUST WITHSTAND 18N MIN PULL OUT FORCE
 3. STANDARD PACKAGING IN POLYBAGS
 4. TERMINALS MUST BE CRIMPED PROPERLY FOR SATISFACTORY LATCHING :
 - FOR CRIMPING INSTRUCTIONS, SEE TA-75 AND TA-295
 - FOR TERMINAL APPLICATION SEE TA-531.
 PRODUCT SPECIFICATION: BUS-12-067.
 5. THIS HOUSING IS INTENDED FOR USE WITH MINI PV TERMINAL WITH 22-36 GAUGE WIRE
 6. RoHS COMPLIANT PRODUCT SPECIFICATIONS :
- MEETS PACKAGING SPECS AS PER GS-14-920
 - PRODUCT MEETS EUROPEAN UNION DIRECTIVES AND OTHER COUNTRY REGULATIONS AS DESCRIBED IN GS-22-008.
 - THE PRODUCT IS NOT INTENDED TO BE EXPOSED TO A MANUFACTURING SOLDER PROCESS.



FCIconnect.com

Copyright FCI

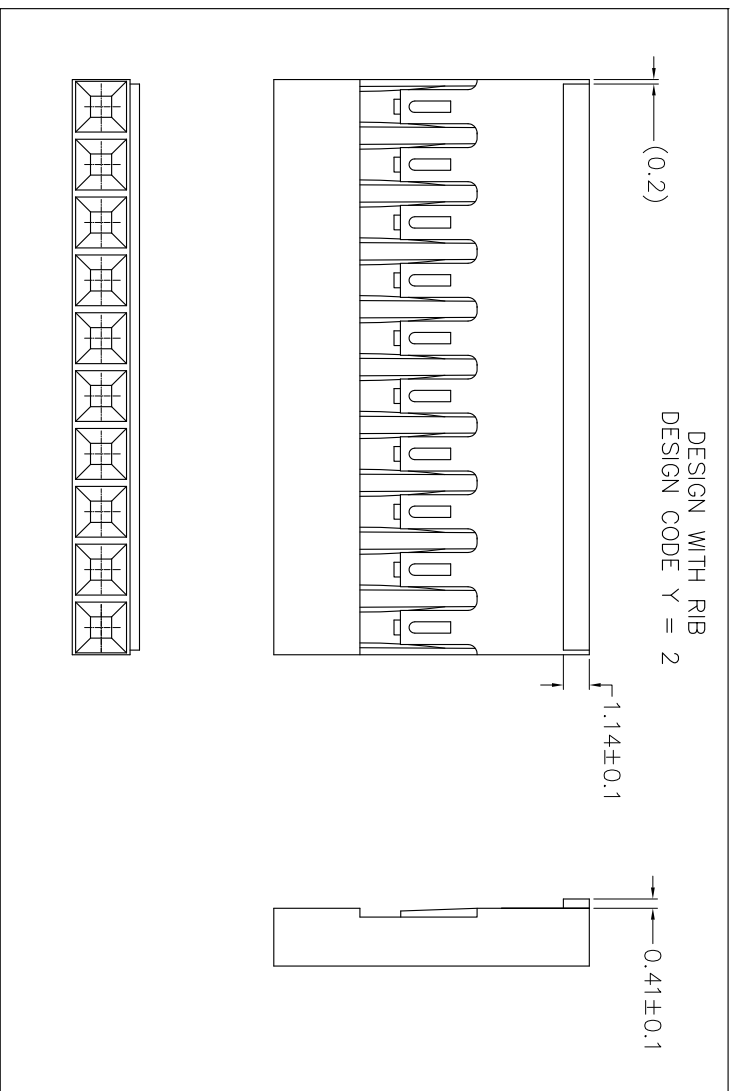
mat'l. code		SEE NOTES		surface		tolerance		projection		product family	
lfr	ecp no	dr	date	ISO 902	ISO 406	ISO 1011	mm	BERCONN		title	
BE	K07-0483	HTB	07.07.24	tolerances unless otherwise specified		X ±0.3	mm	MINI LATCH SR		POLARIZED HSG 2.54mm	
BF	F12-0064	LMU	12.06.08	linear	.xx ±0.13	xxx ±0.05	mm	CUSTOMER		sheet 1 of 2	
BG	B-14321	LMU	13.03.21	appd	JCO	12.06.08	mm	65039		size A3	
sheet index		revision	sheet	1	2	scale 5:1		drawing		type	
1		BC	BF					CUSTOMER		Drawing	



FCIconnect.com

Copyright FCI

PIN STYLE	No. OF POS.	DIM J	DIM K
35	1x02	2.54	4.93
34	1x03	5.08	7.47
33	1x04	7.62	10.01
32	1x05	10.16	12.55
31	1x06	12.70	15.09
30	1x07	15.24	17.63
29	1x08	17.78	20.17
28	1x09	20.32	22.71
27	1x10	22.86	25.25
26	1x11	25.40	27.79
25	1x12	27.94	30.33
24	1x13	30.48	32.87
23	1x14	33.02	35.41
22	1x15	35.56	37.95
21	1x16	38.10	40.49
20	1x17	40.64	43.03
19	1x18	43.18	45.57
18	1x19	45.72	48.11
17	1x20	48.26	50.65
16	1x21	50.80	53.19
15	1x22	53.34	55.73
14	1x23	55.88	58.27
13	1x24	58.42	60.81
12	1x25	60.96	63.35
11	1x26	63.50	65.89
10	1x27	66.04	68.43
09	1x28	68.58	70.97
08	1x29	71.12	73.51
07	1x30	73.66	76.05
06	1x31	76.20	78.59
05	1x32	78.74	81.13
04	1x33	81.28	83.67
03	1x34	83.82	86.21
02	1x35	86.36	88.75
01	1x36	88.90	91.29



mat'l code		surface		tolerance		projection		product family	
		ISO 1302		ISO 406 ISO 101		mm		BERCONN	
l/r	ecm no	dr	date	tolerances unless otherwise specified		mm		title	
	BE K07-0483	HTB	07.07.24	linear		scale 5:1		MINI LATCH SR	
	BF F12-0064	LWU	12.06.08	xxx ±0.05				POLARIZED HSG 2.54mm	
				x ±0.3				dwg no	
				xx ±0.13				65039	
				xxx ±0.05				sheet 2 of	
				L.MULIN				A3	
				engr L.MULIN				size	
				dtr				Drawing	
				appd JCO					
				12.06.08					
sheet	revision								
index	sheet								

PDS: Rev :B6

STATUS:Released Printed: Nov 15, 2013