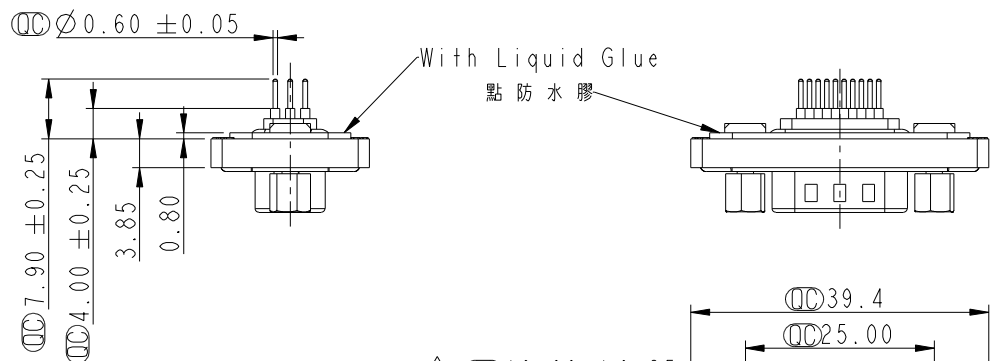
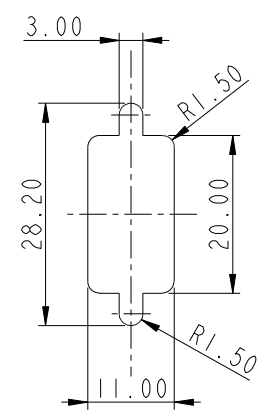
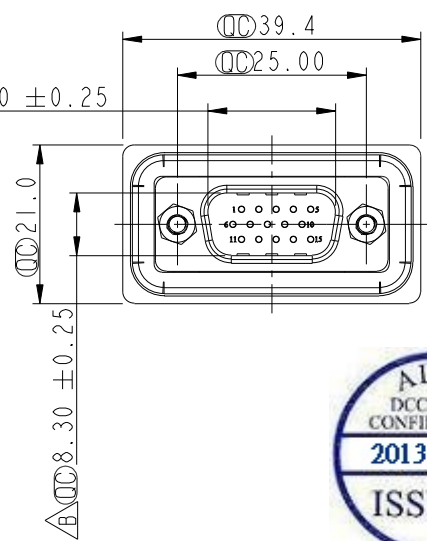


REV.	ECN NO.	DATE	SIGN	DESCRIPTION
B	LEN1390192	2013/09/02	Lu Di	Update Dimension

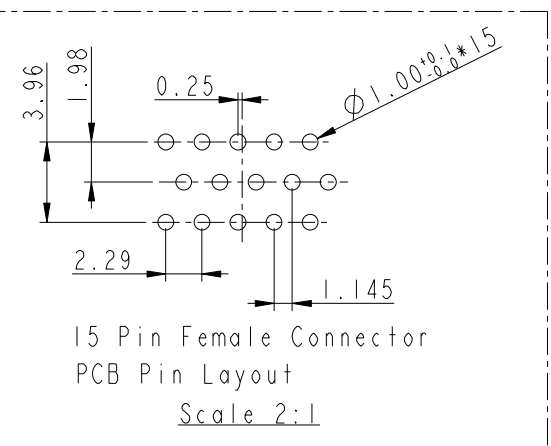
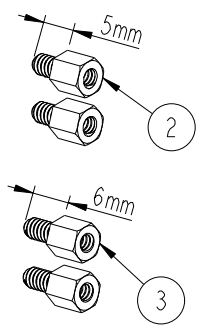
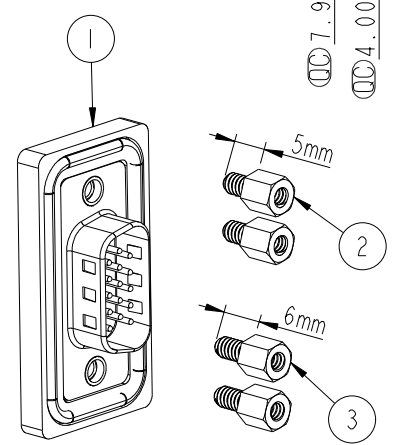


Screw L=5.0 For Panel Thickness Under 1.2mm
適用板厚為 1.2mm以下

Screw L=6.0 For Panel Thickness Between 1.2~2.0mm
適用板厚為 1.2~2.0mm



Recommended Panel Cut-Out
建議挖孔尺寸



- Note:
- * \varnothing Important Dimension.
 - * Waterproof Rate : IP68
IP68: 1M of depth of water 24 hours
(防水等級 : IP68)
(IP68: 1米水深24小時)
 - * Do Mating Test After Glued
點膠後, 須作對插測試
 - * HD-SUB Conn. : Black Core, PBT
 - * Plastic Jacket : Black, Nylon+GF
 - * Pin : Copper Alloy, Gold Plated
 - * Ring : Light Blue, Silicone
 - * Screw : Copper Alloy, Nickel Plated, #4-40 UNC

UNIT: mm		TITLE D-SUB Conn. Panel Screw HD15P M Conn. M Pin			<h1>Amphenol LTW</h1> 安費諾亮泰企業股份有限公司	ITEM NO	HDB-15PMMP-SL8001	DRAWN BY	Di_lu	DATE	2013/09/02
		TOLERANCE	.X ±0.25	.XX ±0.1		.XXX ±0.05	ANGLES ±1°	DWG NO	HDB-15PMMP-SL8001	CHECKED BY	Mafei
SCALE	1:1	SIZE	A4	SHEET	1	OF	1	APPROVED BY	Victor	DATE	2013/09/02
REV.	B	WC-REV.	A.3	\varnothing : Inspection item		CUSTOMER	ALTW				

THIS DOCUMENT IS SUBJECT TO CHANGE WITHOUT NOTICE. IT IS CONFIDENTIAL AND A PROPERTY OF Amphenol LTW. DISCLOSURE TO THIRD PARTY HAS TO BE AUTHORIZED BY Amphenol LTW.

Mouser Electronics

Authorized Distributor

Click to View Pricing, Inventory, Delivery & Lifecycle Information:

[Amphenol:](#)

[HDB-15PMMP-SL8001](#)