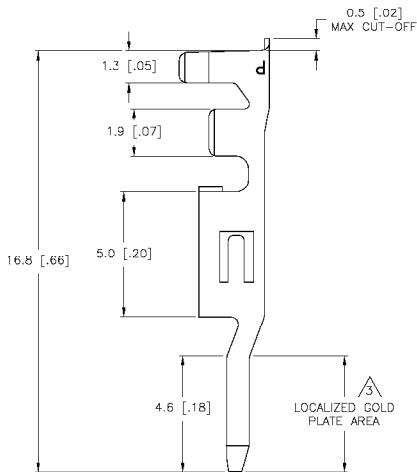
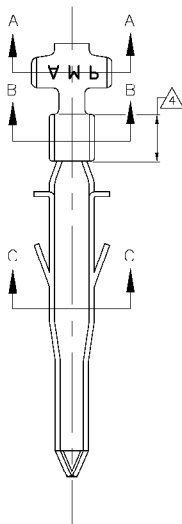


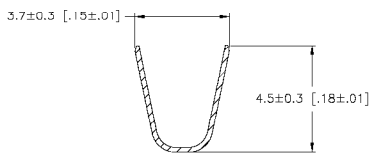
THIS DRAWING IS UNCLASSIFIED. RELEASED FOR PUBLICATION. COPYRIGHT © BY TYCO ELECTRONICS CORPORATION. ALL RIGHTS RESERVED.

DOC		REV		REVISIONS			
CM	00	REV	DATE	DESCRIPTION	BY	CHK	APP'D
		A		REVISED PER 0608-0210-04	158MAK09	KW	DC

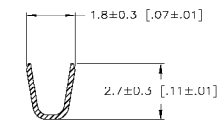


1. WIRE RANGE: 0.32-0.82mm² (22-18 AWG).
2. INSULATION RANGE: 1.50-2.40 DIA.

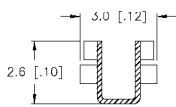
- △ FINISH: 0.76µm MINIMUM GOLD IN LOCALIZED GOLD PLATE AREA OVER 1.27µm MINIMUM NICKEL
- △ FINISH: 2.54µm MINIMUM TIN IN LOCALIZED TIN PLATE AREA



SECTION A-A



SECTION B-B



SECTION C-C

△△	PHOS. BRZ.	1586314-4
PRE-TIN	PHOS. BRZ.	1586314-3
△△	BRASS	1586314-2
PRE-TIN	BRASS	1586314-1
FINISH:	MATERIAL:	PART NO.

THIS DRAWING IS A CONTROLLED DOCUMENT.		DRW	DATE	Tyco Electronics Corporation	
DIMENSIONS: mm [INCHES]		S: HOOVER	14-02-2003	Harrisburg, Pa 17105-3606	
TOLERANCES UNLESS OTHERWISE SPECIFIED:		D: COLEY	14-02-2003	1586314	
Fillet		W: D. COLEY	14-02-2003	TERMINAL 4.2 mm [1.7] PITCH LOOSE PIECE, PIN	
0 FILLET ± 0.3 [0.01] 1 FILLET ± 0.75 [0.03] 2 FILLET ± 1.50 [0.06]	APPLICATION SPEC:	MATERIAL:		RESTRICTED TO	
MATERIAL:		HEIGHT:	SIZE	DATE CODE	DRAWING NO
FINISH:		HEIGHT:	A2	00779	1586314
CUSTOMER DRAWING		SCALE	10:1	SHEET	1 OF 1