

Product data sheet

Power connectors

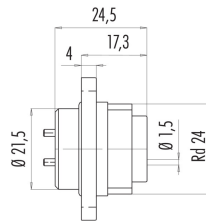
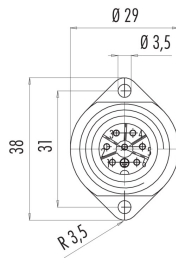


Product description	RD24 male panel mount connector, Contacts: 6+PE, unshielded, solder, IP67, UL, ESTI+, VDE
Area	RD24 series 693
Part no.	09 4227 00 07

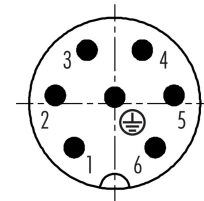
Illustration



Scale drawing



Contact arrangement (Plug-in side)



- 1
 - 2
 - 3
 - 4
 - 5
 - 6
- ⊕ green/yellow

You can find the assembly instructions on the next page.

Technical data

General features

Part no.	09 4227 00 07
Connector design	male panel mount connector
Version	male straight
Connector locking system	screw
Termination	solder
Degree of protection	IP67
Cross-sectional area	max. 0.75 mm ² / max. AWG 18
Temperature range from/to	-40 °C / 100 °C
Mechanical operation	> 500 Mating cycles
Weight (g)	15.19
Customs tariff number	85369010

Electrical parameters

Rated voltage	250 V
Rated impulse voltage	4000 V
Rated current (40 °C)	10 A (8 A UL)
Insulation resistance	≥ 10 ¹⁰ Ω
Pollution degree	3
Overvoltage category	III
Insulating material group	III
EMC compliance	unshielded

Material

Contact body material	PBT
-----------------------	-----

Product data sheet

Power connectors



Product description	RD24 male panel mount connector, Contacts: 6+PE, unshielded, solder, IP67, UL, ESTI+, VDE
Area	RD24 series 693
Part no.	09 4227 00 07

Contact material	CuZn (brass)
Contact plating	Ag (silver)
REACH SVHC	CAS 7439-92-1 (Lead)
SCIP number	8bd5a807-8ad7-4d5e-8584-b343c992c781

Authorization/approvals

Approvals	UL, ESTI+, VDE
-----------	----------------

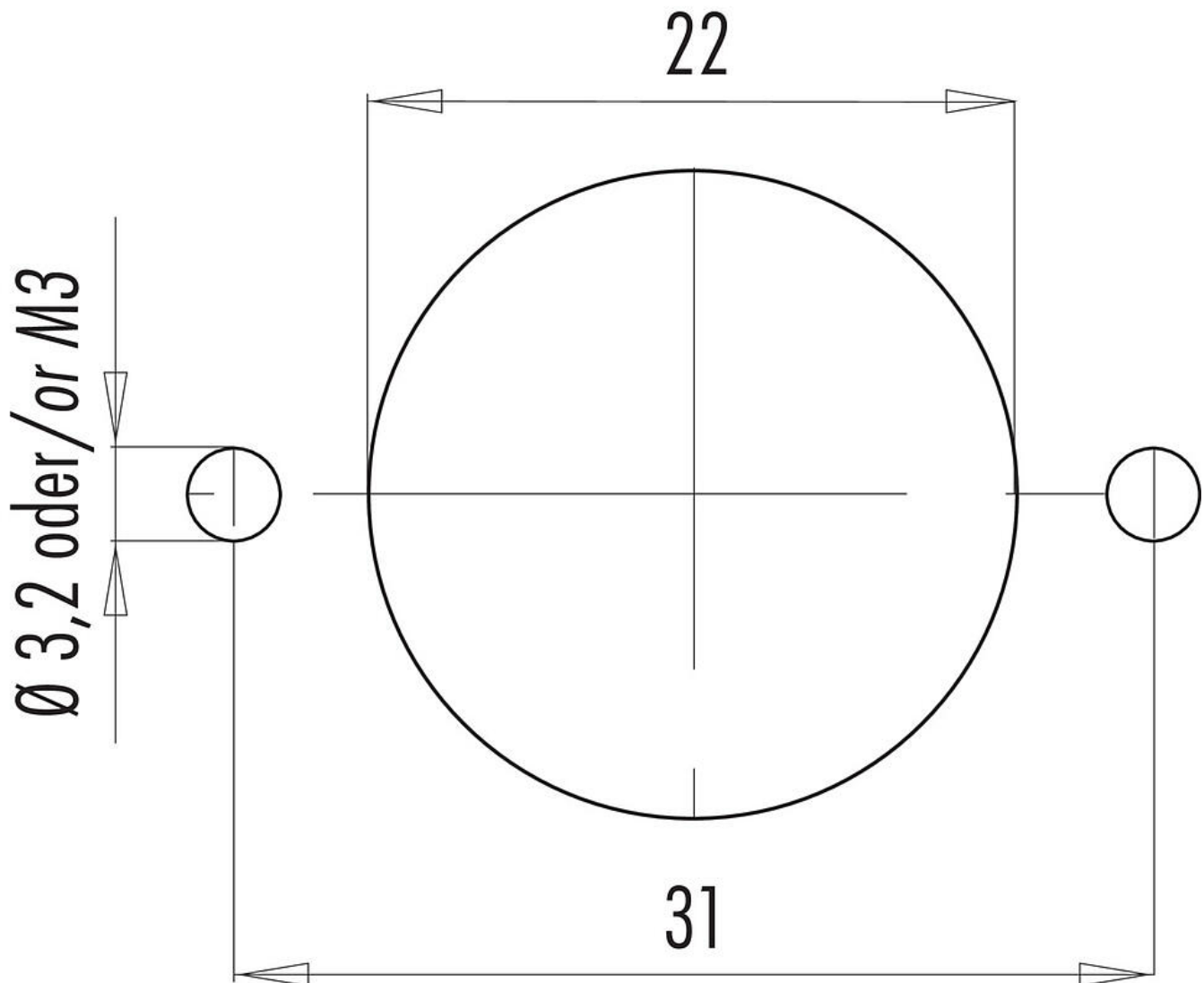
Classifications

eCl@ss 11.1	27-44-01-09
ETIM 7.0	EC003569

Product description RD24 male panel mount connector, Contacts: 6+PE, unshielded, solder, IP67, UL, ESTI+, VDE

Area RD24 series 693
Part no. 09 4227 00 07

Assembly instructions / Panel cut-out



Product description	RD24 male panel mount connector, Contacts: 6+PE, unshielded, solder, IP67, UL, ESTI+, VDE
Area	RD24 series 693
Part no.	09 4227 00 07

Security notices

The connector must not be plugged or unplugged under load. Non-observance and improper use can result in personal injury.

The connectors have been developed for applications in plant engineering, control and electrical equipment construction. The user is responsible for checking whether the connectors can also be used in other areas of application.

Plug connectors with enclosure protection IP 67 and IP 68 are not suitable for use under water. When used outdoors, the plug connectors must be protected separately against corrosion. For further information on the IP protection classes, please refer to the "Technical Information" download centre.