

PLUG: WTAV 20 PD9 SYL  
 RECEPTACLE: WTAX 20 SAD9 SYL  
 XXXX XX XXXX XXX

**PLUG**

**RECEPTACLE**

**SERIES**

WTAV Plug, straight, no mounting ears	WTAX Receptacle, straight, no mounting ears
	WTAX Receptacle, right angle, no mounting ears

**SIZE**

XX Number of contacts (10, 14, 20, 24, 26, 30, 36, 40, 44, 50, 54, 56, 60, 66, or 70)	XX Number of contacts (10, 14, 20, 24, 26, 30, 36, 40, 44, 50, 54, 56, 60, 66, or 70)
---	---

**CONTACTS**

- Pin or socket contacts can be used in either plug or receptacle.
- When pin contacts are used, standard hardware orientation places the female hardware next to the #1 pin contact.
- When socket contacts are used, standard hardware orientation places the male hardware next to the #1 socket contact.

**TYPE CONTACTS/TERMINATIONS:**

PC	Pin, straight, solder cup (.035" I.D.)
PD7	Pin, straight, dip solder, .109" x .027" dia
PD9	Pin, straight, dip solder, .140" x .027" dia
PD11	Pin, straight, dip solder, .172" x .027" dia
PF3	Pin, straight, flex circuit, .050"
PF6	Pin, straight, flex circuit, .093"
PF8	Pin, straight, flex circuit, .125"
PW34	Pin, straight, wire wrap <sup>®</sup> , .531"
PW40	Pin, straight, wire wrap <sup>®</sup> , .625"

**TYPE CONTACTS/TERMINATIONS:**

SAC	Socket, straight, solder cup (.035" I.D.)
SAD7	Socket, straight, dip solder, .109" x .027" dia
SAD9	Socket, straight, dip solder, .140" x .027" dia
SAD11	Socket, straight, dip solder, .172" x .027" dia
SAF3	Socket, straight, flex circuit, .050"
SAF6	Socket, straight, flex circuit, .093"
SAF9	Socket, straight, flex circuit, .140"
SAG7	Socket, straight, dip solder, .109" x .018" dia
SAG9	Socket, straight, dip solder, .140" x .018" dia
SAG11	Socket, straight, dip solder, .172" x .018" dia
SAP	Socket, straight, pin termination, .150" (connector saver)
SAW24	Socket, straight, wire wrap <sup>®</sup> , .375"
SAW40	Socket, straight, wire wrap <sup>®</sup> , .625"
SOR7	Socket, right angle, dip solder, .109" x .025" dia
SOR9	Socket, right angle, dip solder, .140" x .025" dia
SOR11	Socket, right angle, dip solder, .172" x .025" dia

**HARDWARE**

- Jacket hardware determines image of connector. Must specify image with guide set hardware.
- Plug facial seal gaskets and hoods; order separately or add "Q" in part number. Example: WTAV10PD9QJ. See "Gaskets" and "Hoods" in Accessories section for instructions.
- Fixed jackset, long (JL) includes jackscrew or jacksocket, #2-56 nut, #2 flat washer & #2 lockwasher

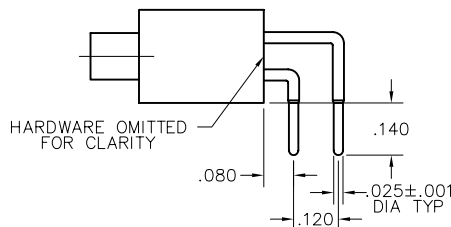
SY	Guide set
SY-#	Guide set, polarized
SYL	Guide set, long
SYL-#	Guide set, long, polarized
J	Fixed jackset
JL	Fixed jackset, long

SY	Guide set
SY-#	Guide set, polarized
SYL	Guide set, long
SYL-#	Guide set, long, polarized
JT	Turning jackset, .500"
JTA	Turning jackset, .200"
JTB	Hex turning jackset, .200"
JTC	Hex turning jackset, .500"
JTL	Turning jackset, long, .700"

**OPTIONS**

- Option Codes: Add to the end of the part number. Example: WTAV10PD9J-D01. Call factory for additional codes.
- 433 Polarizing pin installed in contact position noted by dash number. See "Polarization" in Accessories section.
- 444 Contact position noted by dash number is left open (to mate with -443). See "Polarization" in Accessories section.
- B82 Termination face sealed against conformal coating
- D01 Pretinned contact terminations (except solder cups, wire wraps<sup>®</sup> and flex contacts) with 63/37 or 60/40 solder.
- P39 Pretinned contact terminations (except solder cups, wire wraps<sup>®</sup> and flex contacts) with SAC305 solder (lead free).
- D54 Combine -B82 & -D01 options
- G69 Solder cups fixed in an outward orientation (otherwise contacts will rotate)

= Option not RoHS compliant



CONTACT OPTION: SOR9

# Mouser Electronics

Authorized Distributor

Click to View Pricing, Inventory, Delivery & Lifecycle Information:

## AirBorn:

[WTAX20PCJTL](#) [WTAX54SAD9SYL](#) [WTAX60SAD9SYL](#) [WTAX24SACSYL](#) [WTAX50SACSYL](#) [WTAX70SACSYL](#)  
[WTAX30SAD9SYL](#) [WTAX10SACSYL](#) [WTAX14SAD9SYL](#) [WTAX26SAD9SYL](#) [WTAX44SAD9SYL](#) [WTAX24SAD9SYL](#)  
[WTAX10SAD9SYL](#) [WTAX36SAD9SYL](#) [WTAX40SAD9SYL](#) [WTAX50SAD9SYL](#) [WTAX66SACSYL](#)  
[WTAX66SAD9SYL](#) [WTAX70SAD9SYL](#) [WTAX40SACSYL](#) [WTAX44SACSYL](#) [WTAX54SACSYL](#) [WTAX56SACSYL](#)  
[WTAX56SAD9SYL](#) [WTAX60SACSYL](#) [WTAX14SACSYL](#) [WTAX20SACSYL](#) [WTAX20SAD9SYL](#) [WTAX26SACSYL](#)  
[WTAX30SACSYL](#) [WTAX36SACSYL](#) [WTAX50SACJT](#) [WTAX10PCJT](#) [WTAX24PCJT](#) [WTAX24PCJTL](#)  
[WTAX10SACJTA](#) [WTAX10SACJTB](#) [WTAX44SACJTA](#) [WTAX14SACJTAFM](#) [WTAX20SACJTL](#) [WTAX20SACJTAFM](#)  
[WTAX10SECJTB](#) [WTAX14SACJTB](#) [WTAX14SACJTB-G69](#) [WTAX20SACJTA-B82](#) [WTAX20SACJTB](#) [WTAX20SAD9-](#)  
[B82](#) [WTAX20SAD9JTA](#) [WTAX50PCJTB](#) [WTAX54SAD9JTB](#) [WTAX66SOR9JTA](#) [WTAX70SAD9SYL-D54](#)  
[WTAX20SAD9JTA-B82](#) [WTAX20SAD9SY-B82](#) [WTAX20SAF6JTA](#) [WTAX24SACJTB](#) [WTAX24SAD9SY](#)  
[WTAX26SACJTB](#) [WTAX30SACJTB](#) [WTAX30SAD9JTA](#) [WTAX30SAF6JTB](#) [WTAX30SED9SYL](#) [WTAX36SACJTB](#)  
[WTAX36SAD9J](#) [WTAX40SED9SYL](#) [WTAX50H](#) [WTAX10SAD9JTB](#) [WTAX10PCJTA](#) [WTAX36SAD7SY-D01](#)  
[WTAX56SACJTB](#) [WTAX66SED11SYL967](#) [WTAX10SAD11JLFF-D01](#) [WTAX30SAD9SY](#) [WTAX30SAD9SYL-D01](#)  
[WTAX36H](#) [WTAX36HN](#) [WTAX36SACJT](#) [WTAX36SACJTA](#) [WTAX36SACSY](#) [WTAX36SAD9-D54](#) [WTAX36SAD9SY](#)  
[WTAX36SAG7JTA](#) [WTAX40HN](#) [WTAX40SACJTA](#) [WTAX40SACJTB](#) [WTAX40SACJTL](#) [WTAX40SAD11SYL](#)  
[WTAX20SACJT](#) [WTAX20SACJTA](#) [WTAX20SAD7JTA](#) [WTAX20SAD7SYL](#) [WTAX20SAD9SY](#) [WTAX20SAD9SY-1](#)  
[WTAX20SECJT](#) [WTAX20SECJTA](#) [WTAX24PC](#) [WTAX24PCJTB](#) [WTAX24PD9JTB](#) [WTAX24SAD9SYL-D01](#)  
[WTAX24SAF3JTA-B82](#)