

Altech thermocouple terminal blocks are designed for use in temperature measuring circuits.

The current carrying part of the terminal blocks have the same material (according to DIN437134 and DIN43714) which is used for compensating cables in the temperature measurement circuit (up to 200°C).

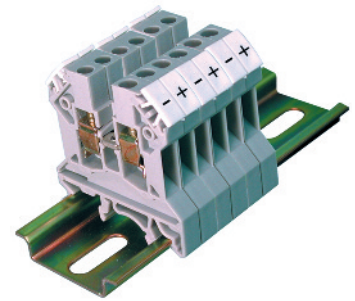
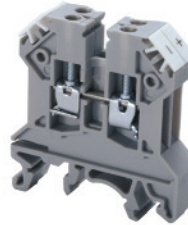
The terminal block is marked for the respective type of thermocouple which enables easy identification for wiring.

\*

- CTT2.5UK 'K' type - Chromel (NiCr) Alumel (NiAl)
- CTT2.5UJ 'J' type - Iron (Fe) Constantan (CuNi)
- CTT2.5UT 'T' type - Copper (Cu) Constantan (CuNi)
- CTT2.5UE 'E' type - Chromel (NiCr) Constantan (CuNi)








**CTT2.5UK/J/T/E**



Terminal Width	10 mm
Height x Length	45 x 43 mm
Stripping Length	8 mm
Insulation Material	Polyamide 6.6
Current Carrying Material	*
Type of Connection	4 screw clamps
Wire Range	24-12 AWG
Voltage Rating	300 V
Current Rating	10 A
Torque	7 lb-in

Cat. No.	Std. Pk.
----------	----------

<b>Terminal Block</b>	<b>CTT2.5UK</b>	50
	<b>CTT2.5UJ</b>	50
	<b>CTT2.5UT</b>	50
	<b>CTT2.5UE</b>	50
End Plate 	EP2.5/4UN	50
Isolation Plate 	PP2.5/4UN	50
DIN Rail <i>for ordering information refer to page 63</i>		
End Clamp 	CA802	100
	CA702	100
Marking Tags (MT Type) 	included	

# Mouser Electronics

Authorized Distributor

Click to View Pricing, Inventory, Delivery & Lifecycle Information:

[Altech:](#)

[CTT2.5UK](#) [CTT2.5UJ](#) [CTT2.5UT](#) [CTT2.5UE](#)