

Feed-through terminal block - ST 2,5-QUATTRO BK



3037452

<https://www.phoenixcontact.com/gb/products/3037452>

Please be informed that the data shown in this PDF document is generated from our Online Catalog. Please find the complete data in the user documentation. Our General Terms of Use for Downloads are valid.



Feed-through terminal block, nom. voltage: 800 V, nominal current: 24 A, connection method: Spring-cage connection, Rated cross section: 2.5 mm², cross section: 0.08 mm² - 4 mm², mounting type: NS 35/7,5, NS 35/15, color: black

Commercial Data

Item number	3037452
Packing unit	50 pc
Minimum order quantity	50 pc
Sales Key	BE2113
Product Key	BE2113
GTIN	4017918622480
Weight per Piece (including packing)	9.598 g
Weight per Piece (excluding packing)	8.498 g
Customs tariff number	85369010
Country of origin	DE

Feed-through terminal block - ST 2,5-QUATTRO BK



3037452

<https://www.phoenixcontact.com/gb/products/3037452>

Technical Data

Product properties

Product type	Multi-conductor terminal block
Number of connections	4
Number of rows	1
Potentials	1

Insulation characteristics

Overvoltage category	III
Degree of pollution	3

Electrical properties

Rated surge voltage	8 kV
Maximum power dissipation for nominal condition	0.77 W

Connection data

Number of connections per level	4
Nominal cross section	2.5 mm ²
Stripping length	8 mm ... 10 mm
Internal cylindrical gage	A3
Connection in acc. with standard	IEC 60947-7-1
Conductor cross section solid	0.08 mm ² ... 4 mm ²
Cross section AWG	28 ... 12 (converted acc. to IEC)
Conductor cross section flexible	0.08 mm ² ... 2.5 mm ²
Conductor cross section, flexible [AWG]	28 ... 14 (converted acc. to IEC)
Flexible conductor cross section flexible (ferrule, w/o plastic sleeve)	0.14 mm ² ... 2.5 mm ²
Flexible conductor cross section (ferrule with plastic sleeve)	0.14 mm ² ... 2.5 mm ²
2 conductors with the same cross section, flexible, with TWIN ferrule with plastic sleeve	0.5 mm ²
Nominal current	24 A
Maximum load current	28 A (with 4 mm ² conductor cross section)
Nominal voltage	800 V
Nominal cross section	2.5 mm ²

Ex data

Rated data (ATEX/IECEx)

Identification	□ II 2 GD Ex eb IIC Gb
Operating temperature range	-60 °C ... 110 °C
Ex-certified accessories	3030514 D-ST 2,5-QUATTRO 3030815 ATP-ST QUATTRO 3036602 DS-ST 2,5 1204517 SZF 1-0,6X3,5

Feed-through terminal block - ST 2,5-QUATTRO BK



3037452

<https://www.phoenixcontact.com/gb/products/3037452>

	3022276 CLIPFIX 35-5
	3022218 CLIPFIX 35
List of bridges	Plug-in bridge / FBS 2-5 / 3030161
	Plug-in bridge / FBS 3-5 / 3030174
	Plug-in bridge / FBS 4-5 / 3030187
	Plug-in bridge / FBS 5-5 / 3030190
	Plug-in bridge / FBS 10-5 / 3030213
	Plug-in bridge / FBS 20-5 / 3030226
Bridge data	21.5 A / 2.5 mm ²
Ex temperature increase	40 K (24.2 A / 2.5 mm ²)
Rated voltage	550 V
for bridging with bridge	550 V
- At bridging between non-adjacent terminal blocks	352 V
- At bridging between non-adjacent terminal blocks via PE terminal block	352 V
- At cut-to-length bridging with cover	220 V
- At cut-to-length bridging with partition plate	275 V
Rated insulation voltage	500 V
output	(Permanent)

Ex level General

Rated current	22 A
Maximum load current	26 A
Contact resistance	1.17 mΩ

Ex connection data General

Nominal cross section	2.5 mm ²
Rated cross section AWG	14
Connection capacity rigid	0.08 mm ² ... 4 mm ²
Connection capacity AWG	28 ... 12
Connection capacity flexible	0.08 mm ² ... 2.5 mm ²
Connection capacity AWG	28 ... 14

Dimensions

Width	5.2 mm
End cover width	2.2 mm
Height NS 35/15	44 mm
Height NS 35/7,5	36.5 mm
Height	1.437 "
Length	72 mm

Material specifications

Color	black
Flammability rating according to UL 94	V0
Insulating material group	I

Feed-through terminal block - ST 2,5-QUATTRO BK



3037452

<https://www.phoenixcontact.com/gb/products/3037452>

Insulating material	PA
Static insulating material application in cold	-60 °C
Temperature index of insulation material (DIN EN 60216-1 (VDE 0304-21))	130 °C
Relative insulation material temperature index (Elec., UL 746 B)	130 °C
Fire protection for rail vehicles (DIN EN 45545-2) R22	HL 1 - HL 3
Fire protection for rail vehicles (DIN EN 45545-2) R23	HL 1 - HL 3
Fire protection for rail vehicles (DIN EN 45545-2) R24	HL 1 - HL 3
Fire protection for rail vehicles (DIN EN 45545-2) R26	HL 1 - HL 3
Calorimetric heat release NFPA 130 (ASTM E 1354)	28 MJ/kg
Surface flammability NFPA 130 (ASTM E 162)	passed
Specific optical density of smoke NFPA 130 (ASTM E 662)	passed
Smoke gas toxicity NFPA 130 (SMP 800C)	passed

Mechanical properties

Mechanical data

Open side panel	Yes
-----------------	-----

Environmental and real-life conditions

Ambient conditions

Ambient temperature (operation)	-60 °C ... 105 °C (max. short-term operating temperature RTI Elec.)
Ambient temperature (storage/transport)	-25 °C ... 60 °C (for a short time, not exceeding 24 h, -60 °C to +70 °C)
Ambient temperature (assembly)	-5 °C ... 70 °C
Ambient temperature (actuation)	-5 °C ... 70 °C
Permissible humidity (storage/transport)	30 % ... 70 %

Standards and regulations

Connection in acc. with standard	IEC 60947-7-1
----------------------------------	---------------

Mounting

Mounting type	NS 35/7,5
	NS 35/15

Feed-through terminal block - ST 2,5-QUATTRO BK



3037452

<https://www.phoenixcontact.com/gb/products/3037452>

Drawings

Circuit diagram




Feed-through terminal block - ST 2,5-QUATTRO BK



3037452

<https://www.phoenixcontact.com/gb/products/3037452>

Approvals

 CSA Approval ID: 13631				
	Nominal Voltage U_N	Nominal Current I_N	Cross Section AWG	Cross Section mm^2
Use group B	600 V	20 A	28 - 12	-
Use group C	600 V	20 A	28 - 12	-

 IECEE CB Scheme Approval ID: DE1-66179_A1				
	Nominal Voltage U_N	Nominal Current I_N	Cross Section AWG	Cross Section mm^2
	800 V	24 A	-	0.2 - 2.5

 LR Approval ID: LR2014888TA				
	Nominal Voltage U_N	Nominal Current I_N	Cross Section AWG	Cross Section mm^2
			-	-

 NK Approval ID: 09 ME 140				
	Nominal Voltage U_N	Nominal Current I_N	Cross Section AWG	Cross Section mm^2
			-	-

 RS Approval ID: 22.44.01.00083.250				
--	--	--	--	--

 BV Approval ID: 13403/D0 BV				
	Nominal Voltage U_N	Nominal Current I_N	Cross Section AWG	Cross Section mm^2
			-	-

 VDE Zeichengenehmigung Approval ID: 40009033				
	Nominal Voltage U_N	Nominal Current I_N	Cross Section AWG	Cross Section mm^2
	800 V	24 A	-	0.2 - 2.5

 cULus Recognized				
---	--	--	--	--

Feed-through terminal block - ST 2,5-QUATTRO BK




3037452


<https://www.phoenixcontact.com/gb/products/3037452>

Approval ID: E60425				
	Nominal Voltage U_N	Nominal Current I_N	Cross Section AWG	Cross Section mm^2
Use group B				
	600 V	20 A	28 - 12	-
Use group C				
	600 V	20 A	28 - 12	-


DNV Approval ID: TAE00001CS				
	Nominal Voltage U_N	Nominal Current I_N	Cross Section AWG	Cross Section mm^2
			-	-


 **ATEX**
Approval ID: KEMA00ATEX2052U

 **EAC Ex**
Approval ID: RU C-DE.HA91.B.00066

 **IECEx**
Approval ID: IECEx KEM 06.0051U

 **CCC**
Approval ID: 2020322313000621

 **NEPSI**
Approval ID: GYJ20.1193U

 **UKCA-EX**
Approval ID: DEKRA 21UKEX0300U

Feed-through terminal block - ST 2,5-QUATTRO BK



3037452

<https://www.phoenixcontact.com/gb/products/3037452>

Classifications

ECLASS

ECLASS-9.0	27141120
ECLASS-10.0.1	27141120
ECLASS-11.0	27141120

ETIM

ETIM 8.0	EC000897
----------	----------

UNSPSC

UNSPSC 21.0	39121400
-------------	----------

Feed-through terminal block - ST 2,5-QUATTRO BK



3037452

<https://www.phoenixcontact.com/gb/products/3037452>

Environmental Product Compliance

China RoHS	Environmentally friendly use period: unlimited = EFUP-e
	No hazardous substances above threshold values

3037452

<https://www.phoenixcontact.com/gb/products/3037452>

Accessories

 Note: Applying some accessories below might limit this product.

Plug-in bridge

Plug-in bridge - FBS 20-5 - 3030226

<https://www.phoenixcontact.com/gb/products/3030226>



Plug-in bridge, pitch: 5.2 mm, color: red

 Max. current carrying capacity: 24 A

Plug-in bridge

Plug-in bridge - FBS 10-5 - 3030213

<https://www.phoenixcontact.com/gb/products/3030213>



Plug-in bridge, pitch: 5.2 mm, color: red

 Max. current carrying capacity: 24 A

Feed-through terminal block - ST 2,5-QUATTRO BK

3037452

<https://www.phoenixcontact.com/gb/products/3037452>

Plug-in bridge

Plug-in bridge - FBS 5-5 - 3030190

<https://www.phoenixcontact.com/gb/products/3030190>



Plug-in bridge, pitch: 5.2 mm, color: red

 Max. current carrying capacity: 24 A

Plug-in bridge

Plug-in bridge - FBS 4-5 - 3030187

<https://www.phoenixcontact.com/gb/products/3030187>



Plug-in bridge, pitch: 5.2 mm, color: red

 Max. current carrying capacity: 24 A

Feed-through terminal block - ST 2,5-QUATTRO BK

3037452

<https://www.phoenixcontact.com/gb/products/3037452>

Plug-in bridge

Plug-in bridge - FBS 3-5 - 3030174

<https://www.phoenixcontact.com/gb/products/3030174>



Plug-in bridge, pitch: 5.2 mm, color: red

 Max. current carrying capacity: 24 A

Plug-in bridge

Plug-in bridge - FBS 2-5 - 3030161

<https://www.phoenixcontact.com/gb/products/3030161>



Plug-in bridge, pitch: 5.2 mm, color: red

 Max. current carrying capacity: 24 A

Feed-through terminal block - ST 2,5-QUATTRO BK

3037452

<https://www.phoenixcontact.com/gb/products/3037452>

Plug-in bridge

Plug-in bridge - FBS 50-5 - 3038930

<https://www.phoenixcontact.com/gb/products/3038930>



Plug-in bridge, pitch: 5.2 mm, color: red

 Max. current carrying capacity: 24 A

Plug-in bridge

Plug-in bridge - FBSR 2-5 - 3033702

<https://www.phoenixcontact.com/gb/products/3033702>



Plug-in bridge, pitch: 5.2 mm, color: red

 Max. current carrying capacity: 17.5 A

Feed-through terminal block - ST 2,5-QUATTRO BK

3037452

<https://www.phoenixcontact.com/gb/products/3037452>




Plug-in bridge

Plug-in bridge - FBSR 3-5 - 3001591

<https://www.phoenixcontact.com/gb/products/3001591>



Plug-in bridge, pitch: 5.2 mm, color: red

 Max. current carrying capacity: 17.5 A

Plug-in bridge

Plug-in bridge - FBSR 4-5 - 3001592

<https://www.phoenixcontact.com/gb/products/3001592>



Plug-in bridge, pitch: 5.2 mm, color: red

 Max. current carrying capacity: 17.5 A

Feed-through terminal block - ST 2,5-QUATTRO BK

3037452

<https://www.phoenixcontact.com/gb/products/3037452>


Plug-in bridge

Plug-in bridge - FBSR 5-5 - 3001593

<https://www.phoenixcontact.com/gb/products/3001593>

Plug-in bridge, pitch: 5.2 mm, color: red



 Max. current carrying capacity: 17.5 A

Plug-in bridge

Plug-in bridge - FBSR 10-5 - 3033710

<https://www.phoenixcontact.com/gb/products/3033710>

Plug-in bridge, pitch: 5.2 mm, color: red



 Max. current carrying capacity: 17.5 A

Feed-through terminal block - ST 2,5-QUATTRO BK

3037452

<https://www.phoenixcontact.com/gb/products/3037452>

Plug-in bridge

Plug-in bridge - FBS 2-5 BU - 3036877

<https://www.phoenixcontact.com/gb/products/3036877>



Plug-in bridge, pitch: 5.2 mm, color: blue

 Max. current carrying capacity: 24 A

Plug-in bridge

Plug-in bridge - FBS 3-5 BU - 3036880

<https://www.phoenixcontact.com/gb/products/3036880>



Plug-in bridge, pitch: 5.2 mm, color: blue

 Max. current carrying capacity: 24 A

Feed-through terminal block - ST 2,5-QUATTRO BK

3037452

<https://www.phoenixcontact.com/gb/products/3037452>



Plug-in bridge

Plug-in bridge - FBS 4-5 BU - 3036893

<https://www.phoenixcontact.com/gb/products/3036893>



Plug-in bridge, pitch: 5.2 mm, color: blue

 Max. current carrying capacity: 24 A

Plug-in bridge

Plug-in bridge - FBS 5-5 BU - 3036903

<https://www.phoenixcontact.com/gb/products/3036903>



Plug-in bridge, pitch: 5.2 mm, color: blue

 Max. current carrying capacity: 24 A

Feed-through terminal block - ST 2,5-QUATTRO BK

3037452

<https://www.phoenixcontact.com/gb/products/3037452>

Plug-in bridge

Plug-in bridge - FBS 10-5 BU - 3036916

<https://www.phoenixcontact.com/gb/products/3036916>



Plug-in bridge, pitch: 5.2 mm, color: blue

 Max. current carrying capacity: 24 A

Plug-in bridge

Plug-in bridge - FBS 20-5 BU - 3036929

<https://www.phoenixcontact.com/gb/products/3036929>



Plug-in bridge, pitch: 5.2 mm, color: blue

 Max. current carrying capacity: 24 A

Feed-through terminal block - ST 2,5-QUATTRO BK

3037452

<https://www.phoenixcontact.com/gb/products/3037452>

Plug-in bridge

Plug-in bridge - FBS 50-5 BU - 3032114

<https://www.phoenixcontact.com/gb/products/3032114>



Plug-in bridge, Version with single- or double-sided cutting edge. Please keep in mind the possible impact on touch protection as well as air clearances and creepage distances., pitch: 5.2 mm, color: blue

 Max. current carrying capacity: 24 A

Reducing bridge

Reducing bridge - RB ST (2,5/4)-1,5/S - 3214356

<https://www.phoenixcontact.com/gb/products/3214356>



Reducing bridge, pitch: 6.7 mm, color: red

 Max. current carrying capacity: 24 A

Feed-through terminal block - ST 2,5-QUATTRO BK

3037452

<https://www.phoenixcontact.com/gb/products/3037452>


Reducing bridge

Reducing bridge - RB ST 6-(2,5/4) - 3030860

<https://www.phoenixcontact.com/gb/products/3030860>



Reducing bridge, pitch: 9 mm, color: red

 Max. current carrying capacity: 35 A


Reducing bridge

Reducing bridge - RB ST 10-(2,5/4) - 3030873

<https://www.phoenixcontact.com/gb/products/3030873>



Reducing bridge, pitch: 10 mm, color: red

 Max. current carrying capacity: 35 A

Feed-through terminal block - ST 2,5-QUATTRO BK

3037452

<https://www.phoenixcontact.com/gb/products/3037452>


Reducing bridge

Reducing bridge - RB ST 16-(2,5/4) - 3030886

<https://www.phoenixcontact.com/gb/products/3030886>



Reducing bridge, pitch: 11 mm, color: red

 Max. current carrying capacity: 35 A

Reducing bridge

Reducing bridge - RB ST 35-(2,5/4) - 3030899

<https://www.phoenixcontact.com/gb/products/3030899>



Reducing bridge, pitch: 11 mm, color: red

 Max. current carrying capacity: 35 A

Feed-through terminal block - ST 2,5-QUATTRO BK

3037452

<https://www.phoenixcontact.com/gb/products/3037452>

Reducing bridge

Reducing bridge - RB ST (2,5/4)-1,5 - 3038943

<https://www.phoenixcontact.com/gb/products/3038943>



Reducing bridge, pitch: 7.1 mm, color: red

 Max. current carrying capacity: 24 A

Reducing bridge

Reducing bridge - RB UT 6-ST(2,5/4) - 3047264

<https://www.phoenixcontact.com/gb/products/3047264>



Reducing bridge, pitch: 9.5 mm, color: red

 Max. current carrying capacity: 35 A

Feed-through terminal block - ST 2,5-QUATTRO BK

3037452

<https://www.phoenixcontact.com/gb/products/3037452>


Reducing bridge

Reducing bridge - RB UT 35-ST(2,5/4) - 3047280

<https://www.phoenixcontact.com/gb/products/3047280>



Reducing bridge, pitch: 10.8 mm, color: red

 Max. current carrying capacity: 40 A


Reducing bridge

Reducing bridge - RB UT 10-ST(2,5/4) - 3047086

<https://www.phoenixcontact.com/gb/products/3047086>



Reducing bridge, pitch: 10.2 mm, color: red

 Max. current carrying capacity: 40 A

Feed-through terminal block - ST 2,5-QUATTRO BK



3037452

<https://www.phoenixcontact.com/gb/products/3037452>


Reducing bridge

Reducing bridge - RB UT 16-ST(2,5/4) - 3047099

<https://www.phoenixcontact.com/gb/products/3047099>



Reducing bridge, pitch: 11 mm, color: red

 Max. current carrying capacity: 40 A

End cover

End cover - D-ST 2,5-QUATTRO - 3030514

<https://www.phoenixcontact.com/gb/products/3030514>

End cover, length: 72.2 mm, width: 2.2 mm, height: 29.1 mm, color: gray



Feed-through terminal block - ST 2,5-QUATTRO BK

3037452

<https://www.phoenixcontact.com/gb/products/3037452>

Reducing plug

Reducing plug - RPS - 0201647

<https://www.phoenixcontact.com/gb/products/0201647>

Reducing plug, color: gray



Partition plate

Partition plate - ATP-ST QUATTRO - 3030815

<https://www.phoenixcontact.com/gb/products/3030815>

Partition plate, length: 90.9 mm, width: 2 mm, height: 45 mm, color: gray



Feed-through terminal block - ST 2,5-QUATTRO BK



3037452

<https://www.phoenixcontact.com/gb/products/3037452>

Screwdriver

Screwdriver - SZF 1-0,6X3,5 - 1204517

<https://www.phoenixcontact.com/gb/products/1204517>



Actuation tool, for ST terminal blocks, also suitable for use as a bladed screwdriver, size: 0.6 x 3.5 x 100 mm, 2-component grip, with non-slip grip

Cover segment

Cover segment - DS-ST 2,5 - 3036602

<https://www.phoenixcontact.com/gb/products/3036602>



End cover segments, large segment: 32.25 x 13.83 x 0.9, small segment: 22.65 x 11.65 x 0.9, color: gray

Feed-through terminal block - ST 2,5-QUATTRO BK



3037452

<https://www.phoenixcontact.com/gb/products/3037452>

Warning cover

Warning cover - WST 2,5 - 3030941

<https://www.phoenixcontact.com/gb/products/3030941>



Warning cover, 5-pos., for terminal width: 5.2 mm

End cover

End cover - D-ST 2,5-QUATTRO-0,8 OG - 3030513

<https://www.phoenixcontact.com/gb/products/3030513>

End cover, length: 72 mm, width: 0.8 mm, height: 29 mm, color: orange



Feed-through terminal block - ST 2,5-QUATTRO BK



3037452

<https://www.phoenixcontact.com/gb/products/3037452>

Mounting material

Mounting material - ST-IL - 3039900

<https://www.phoenixcontact.com/gb/products/3039900>

Operating decal for the ST terminal block



Actuation tool

Actuation tool - ST-BW - 1207608

<https://www.phoenixcontact.com/gb/products/1207608>

Actuation tool, for all 2.5 mm² - 4.0 mm² spring-cages



Feed-through terminal block - ST 2,5-QUATTRO BK



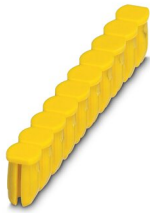
3037452

<https://www.phoenixcontact.com/gb/products/3037452>

Filler plugs

Filler plugs - CEC 2,5 - 3062757

<https://www.phoenixcontact.com/gb/products/3062757>



Cover for conductor shaft, 10-pos., for spring cage terminal blocks (ST) and terminal blocks with push-in technology (PT) with a width of 5.2 mm

Component connector

Component connector - P-CO 2-5 R47K - 3032447

<https://www.phoenixcontact.com/gb/products/3032447>



Component connector, with 47 kOhm resistance for wire-break monitoring, pitch: 5.2 mm, length: 8.9 mm, width: 4.1 mm, height: 34.8 mm, number of positions: 2, color: black

Feed-through terminal block - ST 2,5-QUATTRO BK

3037452

<https://www.phoenixcontact.com/gb/products/3037452>

Group cover marker

Group cover marker - BST 2,5 - 3061282

<https://www.phoenixcontact.com/gb/products/3061282>



Cover for actuation shaft, 5-pos., for spring-cage terminal blocks with width of 5.2 mm

DIN rail perforated

DIN rail perforated - NS 35/ 7,5 PERF 2000MM - 0801733

<https://www.phoenixcontact.com/gb/products/0801733>



DIN rail perforated, acc. to EN 60715, material: Steel, galvanized, passivated with a thick layer, Standard profile, color: silver, Pack of 25 (50 m)

Feed-through terminal block - ST 2,5-QUATTRO BK



3037452

<https://www.phoenixcontact.com/gb/products/3037452>

DIN rail, unperforated

DIN rail, unperforated - NS 35/ 7,5 UNPERF 2000MM - 0801681

<https://www.phoenixcontact.com/gb/products/0801681>



DIN rail, unperforated, acc. to EN 60715, material: Steel, galvanized, passivated with a thick layer, Standard profile, color: silver, Pack of 25 (50 m)

DIN rail perforated

DIN rail perforated - NS 35/ 7,5 WH PERF 2000MM - 1204119

<https://www.phoenixcontact.com/gb/products/1204119>



DIN rail perforated, acc. to EN 60715, material: Steel, Galvanized, white passivated, Standard profile, color: silver, Pack of 25 (50 m)

Feed-through terminal block - ST 2,5-QUATTRO BK

3037452

<https://www.phoenixcontact.com/gb/products/3037452>

DIN rail, unperforated

DIN rail, unperforated - NS 35/ 7,5 WH UNPERF 2000MM-VPE 10 - 1204122

<https://www.phoenixcontact.com/gb/products/1204122>



DIN rail, unperforated, acc. to EN 60715, material: Steel, Galvanized, white passivated, Standard profile, color: silver, Pack of 10 (20 m)

DIN rail, unperforated

DIN rail, unperforated - NS 35/ 7,5 AL UNPERF 2000MM - 0801704

<https://www.phoenixcontact.com/gb/products/0801704>



DIN rail, unperforated, acc. to EN 60715, material: Aluminum, uncoated, Standard profile, color: silver, Pack of 25 (50 m)

Feed-through terminal block - ST 2,5-QUATTRO BK

3037452

<https://www.phoenixcontact.com/gb/products/3037452>

DIN rail perforated

DIN rail perforated - NS 35/ 7,5 ZN PERF 2000MM - 1206421

<https://www.phoenixcontact.com/gb/products/1206421>



DIN rail perforated, acc. to EN 60715, material: Steel, galvanized, Standard profile, color: silver, Pack of 25 (50 m)

DIN rail, unperforated

DIN rail, unperforated - NS 35/ 7,5 ZN UNPERF 2000MM - 1206434

<https://www.phoenixcontact.com/gb/products/1206434>



DIN rail, unperforated, acc. to EN 60715, material: Steel, galvanized, Standard profile, color: silver, Pack of 25 (50 m)

Feed-through terminal block - ST 2,5-QUATTRO BK

3037452

<https://www.phoenixcontact.com/gb/products/3037452>

DIN rail, unperforated

DIN rail, unperforated - NS 35/ 7,5 CU UNPERF 2000MM-VPE 10 - 0801762

<https://www.phoenixcontact.com/gb/products/0801762>



DIN rail, unperforated, acc. to EN 60715, material: Copper, uncoated, Standard profile, color: copper-colored, Pack of 10 (20 m)

End cap

End cap - NS 35/ 7,5 CAP - 1206560

<https://www.phoenixcontact.com/gb/products/1206560>

DIN rail end piece, for DIN rail NS 35/7.5



Feed-through terminal block - ST 2,5-QUATTRO BK



3037452

<https://www.phoenixcontact.com/gb/products/3037452>

DIN rail perforated

DIN rail perforated - NS 35/15 PERF 2000MM - 1201730

<https://www.phoenixcontact.com/gb/products/1201730>



DIN rail perforated, similar to EN 60715, material: Steel, galvanized, passivated with a thick layer, Standard profile, color: silver, Pack of 25 (50 m)

DIN rail, unperforated

DIN rail, unperforated - NS 35/15 UNPERF 2000MM - 1201714

<https://www.phoenixcontact.com/gb/products/1201714>



DIN rail, unperforated, similar to EN 60715, material: Steel, galvanized, passivated with a thick layer, Standard profile, color: silver, Pack of 25 (50 m)

Feed-through terminal block - ST 2,5-QUATTRO BK

3037452

<https://www.phoenixcontact.com/gb/products/3037452>

DIN rail perforated

DIN rail perforated - NS 35/15 WH PERF 2000MM - 0806602

<https://www.phoenixcontact.com/gb/products/0806602>



DIN rail perforated, similar to EN 60715, material: Steel, Galvanized, white passivated, Standard profile, color: white, Pack of 25 (50 m)

DIN rail, unperforated

DIN rail, unperforated - NS 35/15 WH UNPERF 2000MM-VPE 10 - 1204135

<https://www.phoenixcontact.com/gb/products/1204135>



DIN rail, unperforated, similar to EN 60715, material: Steel, Galvanized, white passivated, Standard profile, color: silver, Pack of 10 (20 m)

Feed-through terminal block - ST 2,5-QUATTRO BK



3037452

<https://www.phoenixcontact.com/gb/products/3037452>

DIN rail, unperforated

DIN rail, unperforated - NS 35/15 AL UNPERF 2000MM - 1201756

<https://www.phoenixcontact.com/gb/products/1201756>



DIN rail, unperforated, similar to EN 60715, material: Aluminum, uncoated, Standard profile, color: silver

DIN rail perforated

DIN rail perforated - NS 35/15 ZN PERF 2000MM - 1206599

<https://www.phoenixcontact.com/gb/products/1206599>



DIN rail perforated, similar to EN 60715, material: Steel, galvanized, Standard profile, color: silver, Pack of 25 (50 m)

Feed-through terminal block - ST 2,5-QUATTRO BK

3037452

<https://www.phoenixcontact.com/gb/products/3037452>

DIN rail, unperforated

DIN rail, unperforated - NS 35/15 ZN UNPERF 2000MM - 1206586

<https://www.phoenixcontact.com/gb/products/1206586>



DIN rail, unperforated, similar to EN 60715, material: Steel, galvanized, Standard profile, color: silver, Pack of 25 (50 m)

DIN rail, unperforated

DIN rail, unperforated - NS 35/15 CU UNPERF 2000MM-VPE 10 - 1201895

<https://www.phoenixcontact.com/gb/products/1201895>



DIN rail, unperforated, similar to EN 60715, material: Copper, uncoated, Standard profile, color: copper-colored, Pack of 10 (20 m)

Feed-through terminal block - ST 2,5-QUATTRO BK

3037452

<https://www.phoenixcontact.com/gb/products/3037452>

End cap

End cap - NS 35/15 CAP - 1206573

<https://www.phoenixcontact.com/gb/products/1206573>

DIN rail end piece, for DIN rail NS 35/15



DIN rail, unperforated

DIN rail, unperforated - NS 35/15-2,3 UNPERF 2000MM-VPE 10 - 1201798

<https://www.phoenixcontact.com/gb/products/1201798>



DIN rail, unperforated, acc. to EN 60715, material: Steel, galvanized, passivated with a thick layer, Standard profile 2.3 mm, color: silver, Pack of 10 (20 m)

Feed-through terminal block - ST 2,5-QUATTRO BK

3037452

<https://www.phoenixcontact.com/gb/products/3037452>

Zack marker strip

Zack marker strip - ZB 5 :UNBEDRUCKT - 1050004

<https://www.phoenixcontact.com/gb/products/1050004>

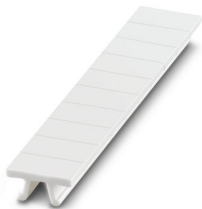


Zack marker strip, Strip, white, unlabeled, can be labeled with: PLOTMARK, CMS-P1-PLOTTER, mounting type: snapped, for terminal block width: 5.2 mm, lettering field size: 5.1 x 10.5 mm, Number of individual labels: 10

Zack marker strip

Zack marker strip - ZB 5 CUS - 0824962

<https://www.phoenixcontact.com/gb/products/0824962>



Zack marker strip, can be ordered: Strip, white, labeled according to customer specifications, mounting type: snap into tall marker groove, for terminal block width: 5.2 mm, lettering field size: 5.15 x 10.5 mm, Number of individual labels: 10

Feed-through terminal block - ST 2,5-QUATTRO BK

3037452

<https://www.phoenixcontact.com/gb/products/3037452>

Zack marker strip

Zack marker strip - ZB 5,LGS:FORTL.ZAHLEN - 1050017

<https://www.phoenixcontact.com/gb/products/1050017>

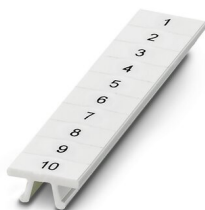


Zack marker strip, Strip, white, labeled, printed horizontally: consecutive numbers 1 ... 10, 11 ... 20, etc. up to 491 ... 500, mounting type: snapped, for terminal block width: 5.2 mm, lettering field size: 5.15 x 10.5 mm, Number of individual labels: 10

Zack marker strip

Zack marker strip - ZB 5,QR:FORTL.ZAHLEN - 1050020

<https://www.phoenixcontact.com/gb/products/1050020>



Zack marker strip, white, Printed vertically: consecutive numbers 1 ... 10, 11 ... 20, etc. up to 491 ... 500, mounting type: snapped, for terminal block width: 5.2 mm, lettering field size: 5.15 x 10.5 mm

Feed-through terminal block - ST 2,5-QUATTRO BK

3037452

<https://www.phoenixcontact.com/gb/products/3037452>

Zack marker strip

Zack marker strip - ZB 5,LGS:GLEICHE ZAHLEN - 1050033

<https://www.phoenixcontact.com/gb/products/1050033>

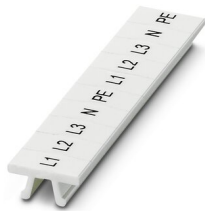


Zack marker strip, Strip, white, labeled, can be labeled with: CMS-P1-PLOTTER, printed horizontally: Identical numbers 1 or 2, etc. up to 100, mounting type: snapped, for terminal block width: 5.2 mm, lettering field size: 5.15 x 10.5 mm, Number of individual labels: 10

Zack marker strip

Zack marker strip - ZB 5,LGS:L1-N,PE - 1050415

<https://www.phoenixcontact.com/gb/products/1050415>



Zack marker strip, Strip, white, labeled, horizontal: L1, L2, L3, N, PE, L1, L2, L3, N, PE, mounting type: snapped, for terminal block width: 5.2 mm, lettering field size: 5.15 x 10.5 mm, Number of individual labels: 10

Feed-through terminal block - ST 2,5-QUATTRO BK



3037452

<https://www.phoenixcontact.com/gb/products/3037452>

Marker for terminal blocks

Marker for terminal blocks - UC-TM 5 - 0818108

<https://www.phoenixcontact.com/gb/products/0818108>



Marker for terminal blocks, Sheet, white, unlabeled, can be labeled with: BLUEMARK ID COLOR, BLUEMARK ID, BLUEMARK CLED, PLOTMARK, CMS-P1-PLOTTER, mounting type: snapped, for terminal block width: 5.2 mm, lettering field size: 10.5 x 4.6 mm, Number of individual labels: 96

Marker for terminal blocks

Marker for terminal blocks - UC-TM 5 CUS - 0824581

<https://www.phoenixcontact.com/gb/products/0824581>



Marker for terminal blocks, can be ordered: by sheet, white, labeled according to customer specifications, mounting type: snap into tall marker groove, for terminal block width: 5.2 mm, lettering field size: 10.5 x 4.6 mm, Number of individual labels: 96

Feed-through terminal block - ST 2,5-QUATTRO BK



3037452

<https://www.phoenixcontact.com/gb/products/3037452>

Marker for terminal blocks

Marker for terminal blocks - UCT-TM 5 - 0828734

<https://www.phoenixcontact.com/gb/products/0828734>



Marker for terminal blocks, Sheet, white, unlabeled, can be labeled with: TOPMARK NEO, TOPMARK LASER, BLUEMARK ID COLOR, BLUEMARK ID, BLUEMARK CLED, THERMOMARK PRIME, THERMOMARK CARD 2.0, THERMOMARK CARD, mounting type: snapped, for terminal block width: 5.2 mm, lettering field size: 4.6 x 10.5 mm, Number of individual labels: 72

Marker for terminal blocks

Marker for terminal blocks - UCT-TM 5 CUS - 0829595

<https://www.phoenixcontact.com/gb/products/0829595>



Marker for terminal blocks, can be ordered: by sheet, white, labeled according to customer specifications, mounting type: snap into tall marker groove, for terminal block width: 5.2 mm, lettering field size: 4.6 x 10.5 mm, Number of individual labels: 72

Feed-through terminal block - ST 2,5-QUATTRO BK

3037452

<https://www.phoenixcontact.com/gb/products/3037452>

Zack Marker strip, flat

Zack Marker strip, flat - ZBF 5:UNBEDRUCKT - 0808642

<https://www.phoenixcontact.com/gb/products/0808642>



Zack Marker strip, flat, Strip, white, unlabeled, can be labeled with: PLOTMARK, CMS-P1-PLOTTER, mounting type: snapped, for terminal block width: 5 mm, lettering field size: 5.1 x 5.2 mm, Number of individual labels: 10

Zack Marker strip, flat

Zack Marker strip, flat - ZBF 5 CUS - 0825025

<https://www.phoenixcontact.com/gb/products/0825025>



Zack Marker strip, flat, can be ordered: Strip, white, labeled according to customer specifications, mounting type: snap into flat marker groove, for terminal block width: 5 mm, lettering field size: 5.15 x 5.15 mm, Number of individual labels: 10

Feed-through terminal block - ST 2,5-QUATTRO BK

3037452

<https://www.phoenixcontact.com/gb/products/3037452>

Zack Marker strip, flat

Zack Marker strip, flat - ZBF 5,LGS:FORTL.ZAHLEN - 0808671

<https://www.phoenixcontact.com/gb/products/0808671>



Zack Marker strip, flat, Strip, white, labeled, printed horizontally: consecutive numbers 1 ... 10, 11 ... 20, etc. up to 491 ... 500, mounting type: snapped, for terminal block width: 5 mm, lettering field size: 5.15 x 5.15 mm, Number of individual labels: 10

Zack Marker strip, flat

Zack Marker strip, flat - ZBF 5,QR:FORTL.ZAHLEN - 0808697

<https://www.phoenixcontact.com/gb/products/0808697>



Zack Marker strip, flat, Strip, white, labeled, Printed vertically: consecutive numbers 1 ... 10, 11 ... 20, etc. up to 91 ... 100, mounting type: snapped, for terminal block width: 5 mm, lettering field size: 5.15 x 5.15 mm, Number of individual labels: 10

Feed-through terminal block - ST 2,5-QUATTRO BK

3037452

<https://www.phoenixcontact.com/gb/products/3037452>

Zack Marker strip, flat

Zack Marker strip, flat - ZBF 5,LGS:GERADE ZAHLEN - 0810821

<https://www.phoenixcontact.com/gb/products/0810821>



Zack Marker strip, flat, Strip, white, labeled, printed horizontally: consecutive even numbers 2 ... 20, 22 ... 40, etc. up to 82 ... 100, mounting type: snapped, for terminal block width: 5 mm, lettering field size: 5.15 x 5.15 mm, Number of individual labels: 10

Zack Marker strip, flat

Zack Marker strip, flat - ZBF 5,LGS:UNGERADE ZAHLEN - 0810863

<https://www.phoenixcontact.com/gb/products/0810863>



Zack Marker strip, flat, Strip, white, labeled, printed horizontally: Odd numbers 1 - 19, 21 - 39, etc. up to 81 - 99, mounting type: snapped, for terminal block width: 5 mm, lettering field size: 5.15 x 5.15 mm, Number of individual labels: 10

Feed-through terminal block - ST 2,5-QUATTRO BK



3037452

<https://www.phoenixcontact.com/gb/products/3037452>

Marker for terminal blocks

Marker for terminal blocks - UC-TMF 5 - 0818153

<https://www.phoenixcontact.com/gb/products/0818153>



Marker for terminal blocks, Sheet, white, unlabeled, can be labeled with: BLUEMARK ID COLOR, BLUEMARK ID, BLUEMARK CLED, PLOTMARK, CMS-P1-PLOTTER, mounting type: snapped, for terminal block width: 5.2 mm, lettering field size: 4.6 x 5.1 mm, Number of individual labels: 96

Marker for terminal blocks

Marker for terminal blocks - UC-TMF 5 CUS - 0824638

<https://www.phoenixcontact.com/gb/products/0824638>



Marker for terminal blocks, can be ordered: by sheet, white, labeled according to customer specifications, mounting type: snap into flat marker groove, for terminal block width: 5.2 mm, lettering field size: 4.6 x 5.1 mm, Number of individual labels: 96

Feed-through terminal block - ST 2,5-QUATTRO BK



3037452

<https://www.phoenixcontact.com/gb/products/3037452>

Marker for terminal blocks

Marker for terminal blocks - UCT-TMF 5 - 0828744

<https://www.phoenixcontact.com/gb/products/0828744>



Marker for terminal blocks, Sheet, white, unlabeled, can be labeled with: TOPMARK NEO, TOPMARK LASER, BLUEMARK ID COLOR, BLUEMARK ID, BLUEMARK CLED, THERMOMARK PRIME, THERMOMARK CARD 2.0, THERMOMARK CARD, mounting type: snapped, for terminal block width: 5.2 mm, lettering field size: 4.4 x 4.7 mm, Number of individual labels: 72

Marker for terminal blocks

Marker for terminal blocks - UCT-TMF 5 CUS - 0829658

<https://www.phoenixcontact.com/gb/products/0829658>



Marker for terminal blocks, can be ordered: by sheet, white, labeled according to customer specifications, mounting type: snap into flat marker groove, for terminal block width: 5.2 mm, lettering field size: 4.4 x 4.7 mm, Number of individual labels: 72

Feed-through terminal block - ST 2,5-QUATTRO BK



3037452

<https://www.phoenixcontact.com/gb/products/3037452>

Test plugs

Test plugs - MPS-MT - 0201744

<https://www.phoenixcontact.com/gb/products/0201744>



Test plugs, with solder connection up to 1 mm² conductor cross section, color: gray

Insulating sleeve

Insulating sleeve - MPS-IH WH - 0201663

<https://www.phoenixcontact.com/gb/products/0201663>



Insulating sleeve, color: white

Feed-through terminal block - ST 2,5-QUATTRO BK

3037452

<https://www.phoenixcontact.com/gb/products/3037452>

Insulating sleeve

Insulating sleeve - MPS-IH RD - 0201676

<https://www.phoenixcontact.com/gb/products/0201676>

Insulating sleeve, color: red

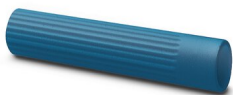


Insulating sleeve

Insulating sleeve - MPS-IH BU - 0201689

<https://www.phoenixcontact.com/gb/products/0201689>

Insulating sleeve, color: blue



Feed-through terminal block - ST 2,5-QUATTRO BK



3037452

<https://www.phoenixcontact.com/gb/products/3037452>

Insulating sleeve

Insulating sleeve - MPS-IH YE - 0201692

<https://www.phoenixcontact.com/gb/products/0201692>

Insulating sleeve, color: yellow



Insulating sleeve

Insulating sleeve - MPS-IH GN - 0201702

<https://www.phoenixcontact.com/gb/products/0201702>

Insulating sleeve, color: green



Feed-through terminal block - ST 2,5-QUATTRO BK

3037452

<https://www.phoenixcontact.com/gb/products/3037452>

Insulating sleeve

Insulating sleeve - MPS-IH GY - 0201728

<https://www.phoenixcontact.com/gb/products/0201728>

Insulating sleeve, color: gray



Insulating sleeve

Insulating sleeve - MPS-IH BK - 0201731

<https://www.phoenixcontact.com/gb/products/0201731>

Insulating sleeve, color: black



Feed-through terminal block - ST 2,5-QUATTRO BK

3037452

<https://www.phoenixcontact.com/gb/products/3037452>

Insulating sleeve

Insulating sleeve - ISH 2,5/0,2 - 3002843

<https://www.phoenixcontact.com/gb/products/3002843>



Insulating sleeve, color: white

Insulating sleeve

Insulating sleeve - ISH 2,5/0,5 - 3002856

<https://www.phoenixcontact.com/gb/products/3002856>



Insulating sleeve, color: gray

Feed-through terminal block - ST 2,5-QUATTRO BK

3037452

<https://www.phoenixcontact.com/gb/products/3037452>

Insulating sleeve

Insulating sleeve - ISH 2,5/1,0 - 3002869

<https://www.phoenixcontact.com/gb/products/3002869>



Insulating sleeve, color: black

Test adapter

Test adapter - PAI-4-N GY - 3032871

<https://www.phoenixcontact.com/gb/products/3032871>



4 mm test adapter, for terminal blocks with 5.2 mm, 6.2 mm and 8.2 mm pitch

Feed-through terminal block - ST 2,5-QUATTRO BK



3037452

<https://www.phoenixcontact.com/gb/products/3037452>

Test plugs

Test plugs - PS-5 - 3030983

<https://www.phoenixcontact.com/gb/products/3030983>



Test plugs, Modular test plug, color: red

Spacer plate

Spacer plate - DP PS-5 - 3036725

<https://www.phoenixcontact.com/gb/products/3036725>



Spacer plate, length: 22.4 mm, width: 5.2 mm, height: 29 mm, number of positions: 1, color: red

Feed-through terminal block - ST 2,5-QUATTRO BK



3037452

<https://www.phoenixcontact.com/gb/products/3037452>

Test plugs

Test plugs - PS-5/2,3MM RD - 3038723

<https://www.phoenixcontact.com/gb/products/3038723>



Test plugs, color: red

End clamp

End clamp - CLIPFIX 35 - 3022218

<https://www.phoenixcontact.com/gb/products/3022218>



Quick mounting end clamp for NS 35/7,5 DIN rail or NS 35/15 DIN rail, with marking option, width: 9.5 mm, color: gray

Feed-through terminal block - ST 2,5-QUATTRO BK

3037452

<https://www.phoenixcontact.com/gb/products/3037452>

End clamp

End clamp - CLIPFIX 35-5 - 3022276

<https://www.phoenixcontact.com/gb/products/3022276>

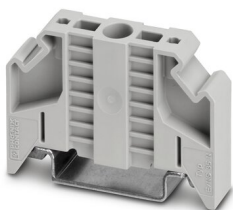


Quick mounting end clamp for NS 35/7,5 DIN rail or NS 35/15 DIN rail, with marking option, with parking option for FBS...5, FBS...6, KSS 5, KSS 6, width: 5.15 mm, color: gray

End clamp

End clamp - E/NS 35 N - 0800886

<https://www.phoenixcontact.com/gb/products/0800886>



End clamp, width: 9.5 mm, color: gray

Feed-through terminal block - ST 2,5-QUATTRO BK



3037452

<https://www.phoenixcontact.com/gb/products/3037452>

End clamp

End clamp - E/UK - 1201442

<https://www.phoenixcontact.com/gb/products/1201442>

End clamp, material: PA, color: gray, Mounting on a DIN rail NS 32 or NS 35



End clamp

End clamp - E/UK 1 - 1201413

<https://www.phoenixcontact.com/gb/products/1201413>

End clamps, for supporting the ends of double-level and three-level terminal blocks, width: 10 mm, color: gray



Phoenix Contact 2023 © - all rights reserved
<https://www.phoenixcontact.com>

PHOENIX CONTACT Ltd
Halesfield 13, Telford
Shropshire, TF7 4PG
01952 681700
info@phoenixcontact.co.uk